



EVHGEAR.COM
2018 CATALOG

2018 MARKS THE 40TH ANNIVERSARY OF THE 1978 RELEASE OF *VAN HALEN*, A LANDMARK ALBUM THAT FOREVER CHANGED ELECTRIC GUITAR AND ROCK HISTORY.

FROM THE INSTANT THE PASADENA QUARTET ASCENDED FROM THE L.A. CLUB SCENE WITH ITS 1978 WARNER BROS. RECORDS DEBUT, EDDIE VAN HALEN BECAME TO MANY THE MOST INFLUENTIAL PARADIGM-SHIFTING GUITARIST SINCE JIMI HENDRIX, FIRMLY CEMENTING HIS PLACE IN HISTORY AS ONE OF THE BEST OF THE ALL-TIME GREATS.

FOR THE PAST 40 YEARS, MOST GUITARISTS HAVE BEEN ABLE TO GIVE YOU A SURPRISINGLY DETAILED ACCOUNT OF THE FIRST TIME THEY HEARD EDDIE VAN HALEN — WHERE THEY WERE, WHO THEY WERE WITH AND THE BEWILDERED STATE THEY FOUND THEMSELVES IN AFTER HEARING “ERUPTION.” FROM THE VICIOUS ATTACK AND INSANELY ENVIABLE GUITAR TONE ON “YOU REALLY GOT ME” TO THE RADICAL AND LIMIT-PUSHING PLAYING TECHNIQUES EDDIE DEPLOYED ON *VAN HALEN I*, PEOPLE’S FIRST REACTIONS OFTEN REFLECTED THE SAME THEMES — “HOW DOES HE DO THAT?” OR “I HAD NEVER HEARD ANYONE PLAY LIKE THAT OR SOUND LIKE THAT BEFORE.”

HIS INFLUENCE WAS, IS AND WILL CONTINUE TO BE A TRIFECTA COMBINING THE INNOVATIVE GENIUS OF HIS PLAYING, HIS MASTER CRAFTSMANSHIP AS A SONGWRITER AND HIS UNRELENTING ABILITY TO EXPERIMENT AND PUSH TO CREATE SOME OF THE GREATEST GUITAR DESIGNS AND SOUNDS EVER.

FOUR DECADES LATER, WE CONTINUE TO MARVEL OVER THE PARADIGM SHIFT HE CREATED, WHICH HAS YET TO BE PARALLELED OR EXCEEDED.



TRAILBLAZER
INNOVATOR
GAME CHANGER
LEGENDARY
ICONIC



THIS IS **WHAT I USE**

BATTLE-TESTED

Since its launch in 2007, the EVH® brand has had one mission – to take the tools Eddie Van Halen uses to create his groundbreaking guitar work and place them unmodified in your hands.

The guitars are tweaked-out for high-speed playing and the amps are hot-rodged for gloriously saturated tone. Every piece of EVH gear, from the highly-defined speaker cabinets to the unique pickups, picks, strings and straps, are the real deal – designed, perfected and approved by the man himself.

“I am involved in every phase because I am not endorsing a product – this is my company,” he said.

Refining and adjusting components and specs until they’re up to his exacting standards, no piece – no matter how large or small – is produced until he personally signs off on it, reflecting his commitment to quality and his personal connection to the gear that bears his name.

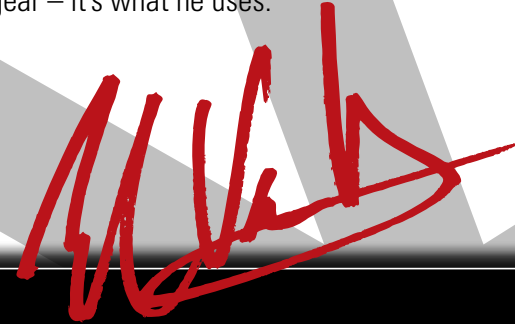
And nothing gets his approval unless it’s been battle-tested by Eddie where the rubber meets the road – in front of an arena full of screaming fans.

“I don’t let anything out unless I’ve taken it on tour.”

Raised onstage, these instruments, amps and accessories are as innovative as Eddie’s playing.

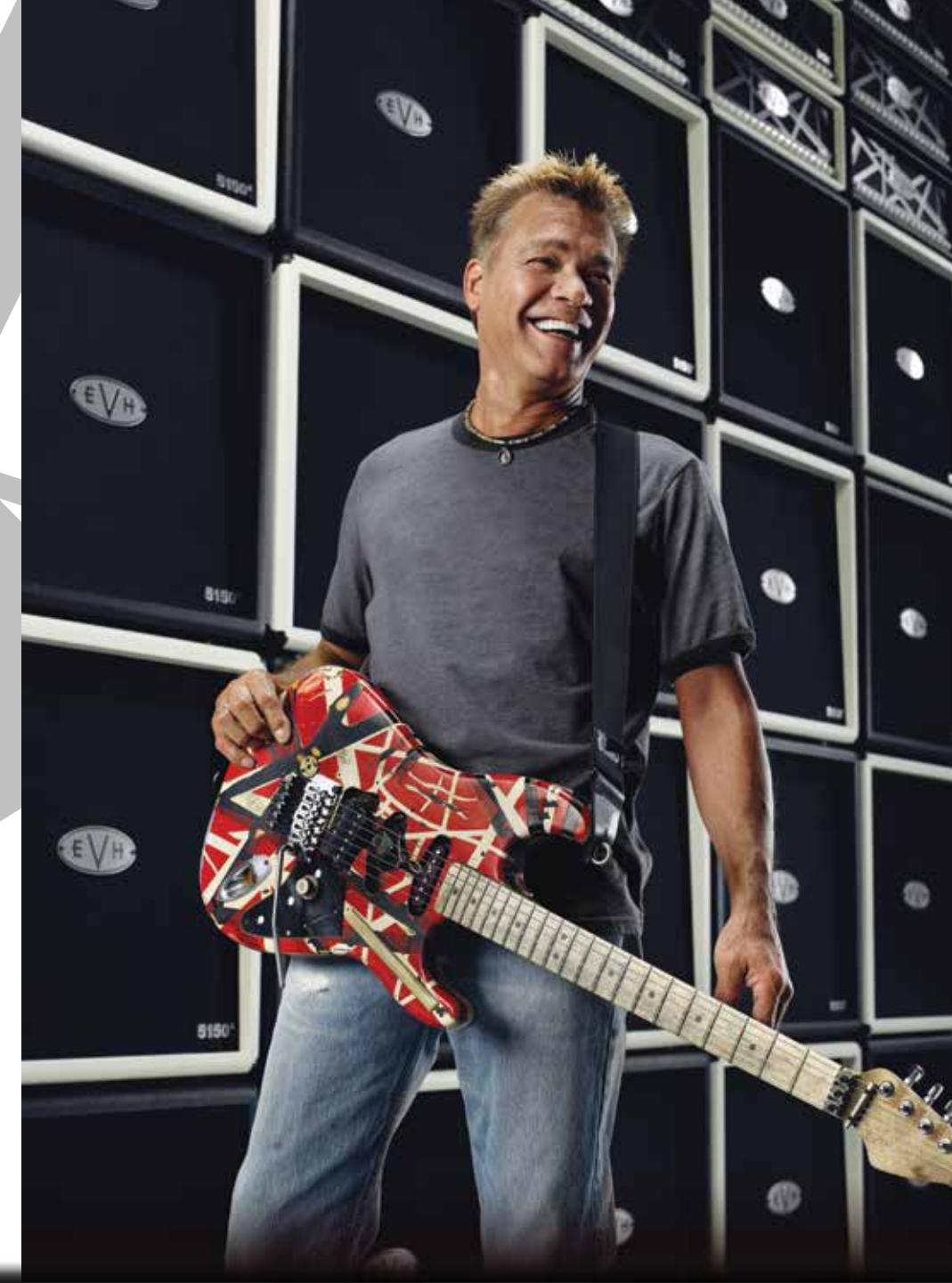
“I don’t want to fight with it,” he said, with regard to his equipment. “I want to speak to it and have it deliver my message – and it works with me.”

The same equipment he’s created and continued to evolve for over four decades is now available to work with you. Plug in and make your own mark with EVH gear – it’s what he uses.



“A GUITAR IS A VERY PERSONAL EXTENSION OF THE PERSON PLAYING IT. YOU HAVE TO BE EMOTIONALLY AND SPIRITUALLY CONNECTED TO YOUR INSTRUMENT.”

-EDDIE VAN HALEN





NICOLE PAPA-STAVROU
WE START WARS

Photo: Strati Hovartos



EMRAH DEMIREL
PITCH BLACK PROCESS

Photo: Daniel Satar



SCOTT IAN
ANTHRAX

Photo: Armando Aguirre



KEREM INCI
PITCH BLACK PROCESS

Photo: Daniel Satar



JUAN GARCIA & ERNIE C
BODY COUNT

Photo: Josh Forney



BEN VARON
OCEANHOARSE

Photo: Oskari Niemi



SETH BLAKE & CODY QUISTAD
WAGE WAR

Photo: Bryce Hall



TREY HILL
BIG & RICH

Photo: Chad Lee

THIS IS WHAT WE USE



PAUL SIDOTI
TAYLOR SWIFT

Photo: Came Halstead



BILLY GRAZIADEI
BIOHAZARD & POWERFLO

Photo: Melissa Hummel



ANDRES GIMENEZ
A.N.I.M.A.L.
DE LA TIERRA

Photo: Martin DarkSoul



CLINT LOWERY & JOHN CONNOLLY
SEVENDUST

Photo: Blake Plinsky



KURT ALLISON
JASON ALDEAN

Photo: mattwilsonimages.com



WES BORLAND
LIMP BIZKIT

Photo: Paris Visone



ANDREAS KISSER
SEPULTURA

Photo: Gorika Photography



DANNY MARINO
THE AGONIST

Photo: Mihaela Petrescu



OLI HERBERT & MIKE MARTIN
ALL THAT REMAINS



PHIL COLLEN
DEF LEPPARD



NICLAS ENGIN
IN FLAMES

Photo: Anicka Nilsson



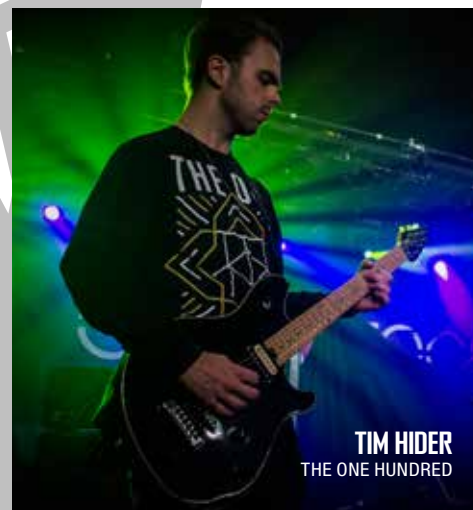
DAVE DAVIDSON
REVOCATION

Photo: Ash Pearson



CRAIG LOGICERO
DRESS THE DEAD

Photo: Eric Johnson



TIM HIDER
THE ONE HUNDRED



CHRISTIAN ANDREU
GOJIRA

Photo: Tamy Vega



MATTY LEWIS & DAN PALMER
ZEBRAHEAD

Photo: Kevin Baldes



JOE DUPLANTIER
GOJIRA



JOSH CAMPIRO
HELLIONS

Photo: Neal Walters



JASON HOOK
FIVE FINGER DEATH PUNCH

Photo: Poy Kelley



MARCUS D'ANGELO
CLAUSTROFOBIA

Photo Diego Der Bedrosian-Pride Music/IMG



TRAVIS LEVRIER
ENTHEOS

Photo Randy Edwards



JORDAN ZIFF
MARTY FRIEDMAN BAND/
GEORGIA CHROME



NEIL HUDSON & NOEL DAVIS
KRYSTHLA



JOE DON ROONEY
RASCAL FLATTS

Photo: Chris Owyang / Todd Owyang



FRED ZIMEK
LOWER CLASS BRATS /
GOD COLLIDER

Photo: Prém Dhanjal



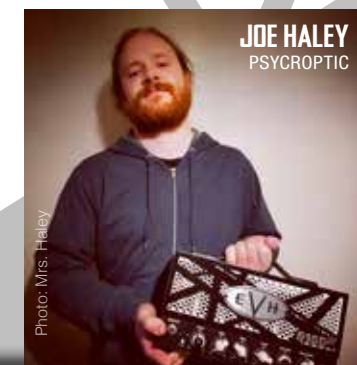
MARKUS VANHALA
INSOMNIUM

Photo: Markus Helander



CONER O'KEEFE
AS LIONS

Photo: Evangeline Parkinson photography



JOE HALEY
PSYCROPTIC

Photo: Mrs. Haley



JIM ROTA
FIREBALL MINISTRY

Photo: Josh Diamond



STEVE BROWN
TRIXTER

Photo: David Gardiner

OVER FOUR DECADES OF INNOVATION AND EXPERIENCE ARE INJECTED INTO THE CREATION OF THE EVH WOLFGANG® GUITARS. A NATURAL BORN INNOVATOR IN GUITAR-BUILDING AND PLAYING, EDDIE VAN HALEN CONTINUES TO EVOLVE THE LINE.

“WE’RE ALWAYS PUSHING THE ENVELOPE — KIND OF LIKE A RACE TEAM,” HE SAID. “WE TRY TO GET FASTER AND BETTER, AND AT THE SAME TIME, OFFER MORE VALUE AND MORE BANG FOR YOUR BUCK.”

WOLFGANG **SERIES**





WOLFGANG USA EDWARD VAN HALEN SIGNATURE

PUSHING THE ENVELOPE

TWEAKED TO MATCH HIS LATEST AND EXACTING PREFERENCES, THE WOLFGANG USA EDWARD VAN HALEN SIGNATURE BOASTS BEHEMOTH SOUND, NO-HOLDS-BARRED PEDAL-TO-THE-METAL PERFORMANCE AND SPOTLIGHT-READY STYLE.

- BODY:** Basswood with Big-Leaf Maple Top
- BODY SHAPE:** Wolfgang
- BODY FINISH:** Satin Urethane on Stealth (868), Gloss on Ivory (849)
- BODY BINDING:** 5-Ply
- FRETS:** 22
- FRET SIZE:** Vintage Stainless
- POSITION INLAYS:** Block on Ivory, Dot on Stealth
- FINGERBOARD RADIUS:** 12"-16" Compound Radius (304.8 mm to 406.4 mm)
- FINGERBOARD:** Ebony
- NECK MATERIAL:** Quartersawn Maple
- NECK FINISH:** Hand-Rubbed Urethane
- NUT WIDTH:** 1.650" (42 mm)
- SCALE LENGTH:** 25.5" (648 mm)
- HEADSTOCK:** EVH-Branded
- TRUSS ROD:** Heel-Mount Spoke Wheel Adjustment
- PICKUP CONFIGURATION:** H/H
- PICKUPS:** EVH Wolfgang Humbucking (Bridge), EVH Wolfgang AL3 Humbucking (Neck)
- PICKUP SWITCHING:** EVH Reverse-Style 3-Position Toggle Switching: Position 1. Neck Pickup, Position 2. Bridge and Neck Pickups, Position 3. Bridge Pickup
- CONTROLS:** Volume (500K EVH BI Tech HPU Low Friction Pot), Tone (250K EVH Bourns® High Friction Pot)
- HARDWARE:** Chrome, Black Retainer Nut and Tuning Machines on Stealth
- BRIDGE:** EVH-Branded Floyd Rose® Locking Tremolo with EVH D-Tuna®
- STRING NUT:** Floyd Rose Locking
- STRINGS:** EVH .009-.042 Gauges
- ACCESSORIES:** Hardshell EVH Striped SKB Case and EVH Leather Strap Included
- UNIQUE FEATURES:** Custom-Wound Alnico Humbucking Pickups, Magna Coatings Paint, Two Graphite Neck Reinforcement Rods, Schaller® String Retainer and Dog Leash Strap/Eye-Bolt Clasps

SWATCH	PART NUMBER	DESCRIPTION
	5107921849	Ivory, Ebony Fingerboard
	5107920868	Stealth, Ebony Fingerboard



THE ORIGINAL GUITAR THAT LAUNCHED THE LINE, THE WOLFGANG USA UNLEASHES PURE, UNADULTERATED ROCK 'N' ROLL POWER. EXPERIENCE ULTRA-SPEEDY PLAYABILITY, COLOSSAL SOUND AND CLASSIC LOOKS.

- BODY:** Basswood with Big-Leaf Maple Top or 5A Flame Maple Top (820, 858 only)
- BODY SHAPE:** Wolfgang
- BODY FINISH:** Gloss Urethane, Satin on Stealth Models
- BODY BINDING:** 5-Ply
- FRETS:** 22
- FRET SIZE:** Vintage Stainless
- POSITION INLAYS:** Block, Dot (868, 886 only)
- FINGERBOARD RADIUS:** 12"-16" Compound Radius (304.8 mm to 406.4 mm)
- FINGERBOARD:** Ebony, Maple on Vintage White
- NECK MATERIAL:** Quartersawn Maple
- NECK FINISH:** Hand-Rubbed Urethane
- NUT WIDTH:** 1.625" (41.30 mm)
- SCALE LENGTH:** 25.5" (648 mm)
- HEADSTOCK:** EVH-Branded
- TRUSS ROD:** Heel-Mount Spoke Wheel Adjustment
- PICKUP CONFIGURATION:** H/H
- PICKUPS:** Direct Mount EVH Wolfgang Humbucking
- PICKUP SWITCHING:** EVH Reverse-Style 3-Position Toggle Switching: Position 1. Neck Pickup, Position 2. Bridge and Neck Pickups, Position 3. Bridge Pickup
- CONTROLS:** Volume (500K EVH Bourns Low Friction Pot), Tone (250K EVH Bourns High Friction Pot)
- HARDWARE:** Black, Chrome on Trans Finishes and Ivory
- BRIDGE:** EVH-Branded Floyd Rose Locking Tremolo with EVH D-Tuna
- STRING NUT:** R2 Locking Nut
- STRINGS:** EVH .009-.042 Gauges
- ACCESSORIES:** EVH Branded SKB Case
- UNIQUE FEATURES:** Hard-Mount Pickups, Magna Coatings Paint, Two Graphite Neck Reinforcement Rods and Schaller String Retainer

SWATCH	PART NUMBER	DESCRIPTION
	5107920849	Ivory, Ebony Fingerboard
	5107920821	Silver, Ebony Fingerboard
	5107900868	Stealth Black, Ebony Fingerboard
	5107920822	Stealth Gray, Ebony Fingerboard
	5107920820	3-Tone Burst, 5A Flame Maple Top, Ebony Fingerboard
	5107920858	Natural, 5A Flame Maple Top, Ebony Fingerboard
	5107910868	Left-Hand, Stealth Black, Ebony Fingerboard
	5107910886	Left-Hand, Vintage White, Maple Fingerboard
	5107910820	Left-Hand, 3-Tone Burst, 5A Flame Maple Top, Ebony Fingerboard





5107701515 – Red with Black and White Stripes

5107701516 – Black with Yellow Stripes

NEW!

5107701517 – White with Black Stripes



LOADED WITH PLAYER-ORIENTED FEATURES AND ICONIC STYLE, THE WOLFGANG SPECIAL STRIPED IS A HIGHLY-RESPONSIVE AND HUGE-SOUNDING INSTRUMENT THAT WAS BORN TO CRANK OUT SOME SERIOUS ROCK.

WOLFGANG **SPECIAL STRIPED**

ICONIC STRIPED STYLE

- BODY:** Basswood
- BODY SHAPE:** Wolfgang
- BODY FINISH:** Urethane
- FRETS:** 22
- FRET SIZE:** Jumbo
- POSITION INLAYS:** Black Dot on Maple, White Dot on Ebony
- FINGERBOARD RADIUS:** 12"-16" Compound Radius (304.8 mm to 406.4 mm)
- FINGERBOARD:** Ebony (515 only), Maple
- NECK MATERIAL:** Bolt-On Quartersawn Maple
- NECK FINISH:** Hand-Rubbed Urethane
- NUT WIDTH:** 1.625" (41.30 mm)
- SCALE LENGTH:** 25.5" (64.8 cm)
- TRUSS ROD:** Heel-Mount Spoke Wheel Adjustment
- PICKUP CONFIGURATION:** H/H
- PICKUPS:** Direct Mount EVH Wolfgang Humbucking
- PICKUP SWITCHING:** 3-Position Toggle Switching: Position 1. Bridge Pickup, Position 2. Bridge and Neck Pickups, Position 3. Neck Pickup
- CONTROLS:** Volume (500K EVH Bourns Low Friction Pot), Tone (250K EVH Bourns High Friction Pot)
- HARDWARE:** Chrome
- BRIDGE:** EVH-Branded Floyd Rose Locking Tremolo with EVH D-Tuna
- STRING NUT:** Floyd Rose R2 Locking
- STRINGS:** EVH (.009-.042 Gauges)
- OPTIONAL CASE:** 0090916000

WOLFGANG SPECIAL

RAISED ON STAGE

ROAD-TESTED IN ARENAS AROUND THE WORLD, THE WOLFGANG SPECIAL IS A PUREBRED MUSIC-MAKING MACHINE, DESIGNED WITH STUNNING STYLE, GIANT SOUND AND HIGH-SPEED PLAYABILITY.

- BODY:** Basswood (with Flame Maple Top on Transparent Finishes)
- BODY SHAPE:** Wolfgang
- BODY FINISH:** Gloss Urethane
- BODY BINDING:** Single-Ply Cream or Black (529, 586 only)
- FRETS:** 22
- FRET SIZE:** Jumbo
- POSITION INLAYS:** Black Dot on Maple Fingerboard, White Dot on Ebony Fingerboard
- FINGERBOARD RADIUS:** 12"-16" Compound Radius (304.8 mm to 406.4 mm)
- FINGERBOARD:** Maple or Ebony
- NECK MATERIAL:** Bolt-On Quartersawn Maple
- NECK FINISH:** Hand-Rubbed Urethane
- NUT WIDTH:** 1.625" (41.30 mm)
- SCALE LENGTH:** 25.5" (64.8 cm)
- TRUSS ROD:** Heel-Mount Spoke Wheel Adjustment
- PICKUP CONFIGURATION:** H/H
- PICKUPS:** Direct Mount EVH Wolfgang Humbucking
- PICKUP SWITCHING:** 3-Position Toggle Switching: Position 1. Bridge Pickup, Position 2. Bridge and Neck Pickups, Position 3. Neck Pickup
- CONTROLS:** Volume (500K EVH Bourns Low Friction Pot), Tone (250K EVH Bourns High Friction Pot)
- HARDWARE:** Black or Chrome (509, 549 only)
- BRIDGE:** EVH-Branded Floyd Rose Locking Tremolo with EVH D-Tuna
- STRING NUT:** EVH R2 Locking Nut
- STRINGS:** EVH (.009-.042 Gauges)
- OPTIONAL CASE:** 0090916000

NEW
NEW
NEW

NEW

SWATCH	PART NUMBER	DESCRIPTION
	5107701509	Candy Apple Red Metallic, Ebony Fingerboard
	5107701549	Ivory, Ebony Fingerboard
	5107701529	Satin Orange Crush, Ebony Fingerboard
	5107701568	Stealth Black, Ebony Fingerboard
	5107701585	Black, Maple Fingerboard
	5107701520	Matte Army Drab, Maple Fingerboard
	5107701586	Vintage White, Maple Fingerboard
	5107701500	3-Tone Cherry Burst, Flame Maple Top, Maple Fingerboard
	5107701592	Burnt Cherry Burst, Flame Maple Top, Maple Fingerboard
	5107701559	El Natural, Flame Maple Top, Maple Fingerboard
	5107711568	Left-Hand, Stealth Black, Ebony Fingerboard

5107701559 - El Natural

5107701529 - Satin Orange Crush

5107701549 - Ivory

5107701509 - Candy Apple Red Metallic



THE SAME STYLE AND MASSIVE SOUND EDDIE VAN HALEN CREATED AT A PRICE THE EVERYDAY MUSICIAN CAN AFFORD. TESTED WHERE IT COUNTS — LIVE ONSTAGE — THE WOLFGANG STANDARD WG IS DECKED OUT FOR PLAYING PERFORMANCE AND COMFORT.

BODY: Basswood (with Quilt Maple Top on Transparent Finishes)
BODY SHAPE: Wolfgang
BODY FINISH: Gloss Urethane
BODY BINDING: Taped-off Faux Natural on Transparent Finishes
FRETS: 22
FRET SIZE: Jumbo
POSITION INLAYS: Black Dot
FINGERBOARD RADIUS: 12"-16" Compound Radius (304.8 mm to 406.4 mm)
FINGERBOARD: Maple
NECK MATERIAL: Bolt-On Graphite-Reinforced Maple
NECK FINISH: Hand-Rubbed Oil
NUT WIDTH: 1.625" (41.30 mm)
SCALE LENGTH: 25.5" (64.8 cm)
TRUSS ROD: Heel-Mount Spoke Wheel Adjustment
PICKUP CONFIGURATION: H/H
PICKUPS: Direct Mount EVH Wolfgang Humbucking
PICKUP SWITCHING: 3-Position Toggle Switching: Position 1. Bridge Pickup, Position 2. Bridge and Neck Pickups, Position 3. Neck Pickup
CONTROLS: Volume, Tone
HARDWARE: Black Chrome (Transparent Finishes only), Black
BRIDGE: EVH-Branded Floyd Rose Special Locking Tremolo
STRING NUT: EVH R2 Locking Nut
STRINGS: EVH (.009-.042 Gauges)
OPTIONAL GIG BAG: 0221512006

SWATCH	PART NUMBER	DESCRIPTION
	5107001539	Ferrari Red, Maple Fingerboard
	5107001534	Matte Blue Frost, Maple Fingerboard
	5107001514	Cherry Sunburst, Quilt Maple Top, Maple Fingerboard
	5107001585	Transparent Black, Quilt Maple Top, Maple Fingerboard
	5107001511	Transparent Blue Burst, Quilt Maple Top, Maple Fingerboard
	5107001535	Transparent Purple Burst, Quilt Maple Top, Maple Fingerboard
	5107001590	Transparent Red, Quilt Maple Top, Maple Fingerboard
	5107001558	Zilla Burst, Quilt Maple Top, Maple Fingerboard
	5107011576	Left-Hand, Snow White, Maple Fingerboard
	5107011585	Left-Hand, Transparent Black, Quilt Maple Top, Maple Fingerboard

NEW
NEW

NEW

STRIPED SERIES

HISTORIC STYLE

5150®

BODY: Basswood

BODY FINISH: Satin Urethane

FRETS: 22

FRET SIZE: Jumbo

POSITION INLAYS: Black Dot

FINGERBOARD RADIUS: 12"-16" Compound Radius (304.8 mm to 406.4 mm)

FINGERBOARD: Maple

NECK MATERIAL: Quartersawn Maple with Graphite Reinforcement

NECK FINISH: Hand-Rubbed Urethane

NUT WIDTH: 1.685" (42.8 mm)

SCALE LENGTH: 25.5" (648 mm)

TRUSS ROD: Heel-Mount Spoke Wheel Adjustment

HEADSTOCK: "Hockey Stick"

NECK PLATE: 4-Bolt Standard

PICKUP CONFIGURATION: H

PICKUPS: EVH Wolfgang Alnico 2

CONTROLS: Volume

HARDWARE: Chrome

BRIDGE: EVH-Branded Floyd Rose Locking Tremolo with EVH D-Tuna

STRING NUT: Floyd Rose R3 Locking

STRINGS: EVH (.009-.042 Gauges)

UNIQUE FEATURES: Red 5150 Hologram Numbers and Star Decals, Modified "Strat" Body Shape, Black "Speed" Knob and Iconic Red, White & Black Stripe Design

5107902515 - Striped Series 5150

WITH A CAREER OF BEING COPIED, THE STRIPED SERIES GUITARS PUT EDDIE'S HISTORIC AND AUTHENTIC STYLE IN YOUR HANDS ... HIGH-POWERED, HIGH-PERFORMANCE MACHINES AS KICKASS TO LOOK AT AS THEY ARE TO PLAY.



5107902576 - White with Black Stripes

5107902503 - Red with Black and White Stripes

5107902528 - Black with Yellow Stripes

5107902536 - Striped Series Star

5107912503 - LH Red with Black and White Stripes

NEW

BODY: Basswood
BODY FINISH: Gloss Urethane
FRETS: 22
FRET SIZE: Jumbo
POSITION INLAYS: Black Dot
FINGERBOARD RADIUS: 12"-16" Compound Radius (304.8 mm to 406.4 mm)
FINGERBOARD: Maple (Rosewood on Star)
NECK MATERIAL: 1-Piece Bolt-On Quartersawn Maple with Graphite Reinforcement
NECK FINISH: Hand-Rubbed Urethane
NUT WIDTH: 1.6875" (43 mm)
SCALE LENGTH: 25.5" (648 mm)
TRUSS ROD: Heel-Mount Spoke Wheel Adjustment
HEADSTOCK: Standard Stratocaster® (Unique FMIC on Star)
NECK PLATE: EVH Branded
PICKUP CONFIGURATION: H
PICKUPS: Direct Mount EVH Wolfgang Humbucking
CONTROLS: Volume (Labeled Tone)
HARDWARE: Chrome
BRIDGE: EVH-Branded Floyd Rose Locking Tremolo with EVH D-Tuna
STRING NUT: Floyd Rose R3 Locking
STRINGS: EVH (.009-.042 Gauges)
UNIQUE FEATURES: EVH Neckplate, Bar String Retainer, Vintage Strap Buttons, Single-Ply Black Pickguard (576 Only)

**“I’VE ALWAYS EVOLVED IN MY CHASING AND
MAKING OF TONE AND I WILL CONTINUE TO DO SO.
IT’S JUST PART OF MY DNA.”**

-EDDIE VAN HALEN

EVH AMPLIFICATION



5150III[®]S 100-WATT EL34 HEAD

LIGHT UP THE SKY

IN 1978 EDDIE VAN HALEN STARTED A REVOLUTION ON A QUARTET OF EL34'S... TODAY THAT REVOLUTION CONTINUES WITH THE 5150IIIS EL34. EXPERIENCE LETHAL LOOKS AND FEROCIOUS EL34 TONE.

2250260000 - Black and Gold



WATTAGE: 100 Watts
EFFECTS LOOP: 1/4" (Send/Return)
INPUTS: 1/4"
OUTPUTS: Two 1/4" Speaker Jacks Wired Parallel, 1/4" Preamp Out
EXTENSION: 1/4" Parallel Speaker Outputs
CHANNELS: Three (Clean, Crunch and Lead)
CONTROLS: Gain, Low, Mid, High, Volume, Channel Select, Presence and Resonance for Each Channel
CABINET: 11-Ply Birch Plywood
INDICATOR: Red LED Jewel
HANDLE: Black Rubber
COVER: Black Textured Vinyl Covering with Gold and Black EVH Motif

OUTPUT IMPEDANCE: 4, 8 or 16 ohms (Selectable)
DEPTH: 11.5" (29.3 cm)
WIDTH: 29.75" (75.7 cm)
HEIGHT: 10.25" (26 cm)
WEIGHT: 55 lb. (24.9 kg)
PREAMP TUBES: Eight JJ ECC83
POWER TUBES: Four JJ EL34 Matched
UNIQUE FEATURES: EVH Tour Mods, 100S Circuit, Crystal Clear and Compressed Channel One, Channel Two and Three Now Possess Even More Compression and Saturation, Bias Ports and Adjustable Trim Pot, Four-Button Footswitch with Seven-Pin Cable Input
OPTIONAL COVER: 0073406000

5150III 100-WATT STEALTH HEAD

SNARLING SOUND

NOT JUST DRESSED IN A SEDUCTIVELY DARK FINISH, THE 5150III 100-WATT STEALTH HEAD ROARS WITH ITS OWN UNIQUE VOICE — TWEAKED WITH ADDED FEATURES SPECIFICALLY TO MEET EDDIE VAN HALEN'S TOURING REQUIREMENTS.

2250250000 - Stealth Head



WATTAGE: 100 Watts
EFFECTS LOOP: 1/4" (Send/Return)
INPUTS: 1/4"
EXTENSION: 1/4" Parallel Speaker Outputs
CHANNELS: Three (Clean, Crunch and Lead)
CONTROLS: Gain, Low, Mid, High, Volume, Channel Select, Presence and Resonance for Each Channel
CABINET: 7-Ply 5/8" Birch Plywood
INDICATOR: Red LED Jewel
HANDLE: Molded Plastic Strap with Black Powder Coated Caps
COVER: Black Textured Vinyl Covering with Black EVH Striped Steel Grille

OUTPUT IMPEDANCE: 4, 8 or 16 ohms (Selectable)
DEPTH: 11.5" (29.3 cm)
WIDTH: 29.75" (75.5 cm)
HEIGHT: 10.25" (26 cm)
WEIGHT: 58 lb. (26.3 kg)

PREAMP TUBES: Eight JJ ECC83S
POWER TUBES: Four Shuguang 6L6
UNIQUE FEATURES: EVH Tour Mods, Increased Gain for Greater Sustain on Channels Two and Three, Re-Voiced for Improved Low-Mid Frequency Definition, Rear-Panel Resonance Controls for Fine-Tuned Low-End Response, "Stealth" Black "Chicken Head" Control Knob, Bias Ports and Adjustable Trim Pot, Four-Button Footswitch with Seven-Pin Cable Input

OPTIONAL COVER: 0073406000

5150III 100-WATT HEAD

BEST OF BOTH WORLDS

2251000000 – Black



THREE CHANNELS

Three independent channels to switch between three different personalities

CHANNEL FEATURES

Dedicated gain, low, high, mid and volume control for each channel

METAL-STRIPED GRILLE

Custom metal striped grille for an unmistakable onstage identity

HIGHEST-QUALITY COMPONENTS

Finely crafted components and circuitry – from pots to circuit boards to transformers

THREE PRESENCE CONTROLS

Three independent presence controls to personally dial in your tone

2251000400 – Ivory



100-WATT ALL-TUBE DESIGN

The makings of authentic EVH tube tone

EFFECTS LOOP

All-tube effects loop

PREAMP OUT

Preamp out for even more options

ULTRA-FAST FOUR-BUTTON FOOTSWITCH

Ultra-fast four-button metal footswitch for channel and effects loop control

JJ 6L6 AND JJ ECC83S TUBES

Four handpicked JJ 6L6 and eight JJ ECC83S tubes

4-, 8- AND 16-OHM SWITCHING

4-, 8-, and 16-ohm impedance switching for use in a half stack, full stack or anywhere else

5150III 50-WATT EL34 HEAD

YOU ASKED, WE DELIVERED



WHEN COUPLED WITH AN EVH 5150III 2X12, THE 50-WATT HEAD CAN BE LOCKED SECURELY INTO PLACE, ALLOWING FOR DESIRED ANGLE TILT.

2253101310 - 212ST EL34 Cab

INDEPENDENT VOLUME AND GAIN CONTROL FOR ALL THREE CHANNELS HAS ARRIVED WITH THE 5150III 50-WATT EL34 HEAD. EXPERIENCE TOTAL CONTROL, ALONG WITH THE SAME LETHAL LOOKS AND FEROCIOUS EL34 TONE OF THE 100-WATT.

- WATTAGE:** 50 Watts
- EFFECTS LOOP:** 1/4" (Send/Return)
- INPUTS:** 1/4"
- OUTPUTS:** Two 1/4" Speaker Jacks Wired Parallel, 1/4" Stereo Headphone Jack, 1/4" Preamp Out
- CHANNELS:** Three (Clean, Overdrive and Burn)
- CONTROLS:** Channels 1 and 2: Independent Dual-Concentric Gain and Volume with a Shared Low, Mid and High EQ; Channel 3: Gain, Low, Mid, High, Volume, Global Presence, Global Resonance Control (Rear Panel)
- CABINET:** 7-Ply 5/8" Birch Plywood
- INDICATOR:** Red LED Jewel
- HANDLE:** Molded Plastic Strap with Black Powder Coated Caps
- FRONT PANEL:** Black EVH Striped Steel on Gold Anodized Perf Panel
- COVER:** Black Textured Vinyl Covering with Black and Gold Motif
- OUTPUT IMPEDANCE:** 4, 8 or 16 ohms (Selectable)
- DEPTH:** 12" (30.4 cm)
- WIDTH:** 20" (50.8 cm)
- HEIGHT:** 8.6" (21.9 cm)
- WEIGHT:** 35 lb. (15.9 kg)
- PREAMP TUBES:** Seven JJ ECC83S (12AX7)
- POWER TUBES:** Two JJ EL34 with APEX Matching
- UNIQUE FEATURES:** Black and Gold Motif, Four-Button Footswitch with 1/4" Cable Input and Ultra-Fast Switching, MIDI Input, 3-Foot Heavy-Duty Speaker Cable
- OPTIONAL COVER:** 0079197000

2253060000 - Black & Gold



Outer Knob



Inside Chicken

DUAL CONCENTRIC GAIN

Inside Chicken Head Knob Ch2
Gain. Outer Knob Ch1
Clean Gain

DUAL CONCENTRIC VOLUME

Inside Chicken Head Knob Ch2
Volume. Outer Knob Ch1
Clean Volume

NEW 5150III 50-WATT 6L6 HEAD

FULL SPECTRUM OF TONE

2253010010 - Black



2253010410 - Ivory



- WATTAGE:** 50 Watts
- EFFECTS LOOP:** 1/4" (Send/Return)
- INPUTS:** 1/4"
- OUTPUTS:** Two 1/4" Speaker Jacks Wired Parallel, 1/4" Stereo Headphone Jack, 1/4" Preamp Out
- CHANNELS:** Three (Clean, Overdrive and Burn)
- CONTROLS:** Channels 1 and 2: Independent Dual-Concentric Gain and Volume with a Shared Low, Mid and High EQ; Channel 3: Gain, Low, Mid, High, Volume, Global Presence, Global Resonance Control (Rear Panel)
- CABINET:** 7-Ply 5/8" Birch Plywood
- INDICATOR:** Red LED Jewel
- HANDLE:** Molded Plastic Strap with Black Powder Coated Caps
- FRONT PANEL:** Black EVH Striped Steel
- COVER:** Black or Ivory Textured Vinyl Covering with Black EVH Striped Steel Grille
- OUTPUT IMPEDANCE:** 4, 8 or 16 ohms (Selectable)
- DEPTH:** 12" (30.4 cm)
- WIDTH:** 20" (50.8 cm)
- HEIGHT:** 8.6" (21.9 cm)
- WEIGHT:** 35 lb. (15.9 kg)
- PREAMP TUBES:** Seven JJ ECC83S (12AX7)
- POWER TUBES:** Two JJ 6L6
- UNIQUE FEATURES:** Four-Button Footswitch with 1/4" Cable Input and Ultra-Fast Switching, MIDI Input, 3-Foot Heavy-Duty Speaker Cable
- OPTIONAL COVER:** 0079197000

REFRESHED WITH NEWLY ADDED INDEPENDENT DUAL-CONCENTRIC CONTROLS THAT ALLOW FOR GAIN AND VOLUME LEVEL MATCHING, THE 5150III 50-WATT 6L6 IS ARENA-SIZED SOUND IN A PACKAGE YOU CAN EASILY TRANSPORT. THREE CHANNELS OF ROAD-TESTED SOUND WORK FOR ANY PLAYING STYLE — CRISP CLEANS, RAW CRUNCH OR SEARING LEADS.



5150III 15-WATT LBXII HEAD

LITTLE SCREAMER

THIS 2.0 VERSION OF OUR DIMINUTIVE EASY-TO-CARRY "LUNCHBOX" HEAD FEATURES THE FAMOUS GREEN AND BLUE CHANNELS, DELIVERING SPARKLING CLEAN TONE AND PUNCHY GAIN TO INSPIRE UNLIMITED ARTISTIC EXPRESSION.

- WATTAGE:** 15 Watts (Full Power) - 4 Watts (1/4 Power Switch)
- EFFECTS LOOP:** 1/4" Effects Send and Return Jacks
- INPUTS:** One 1/4"
- CHANNELS:** Two (Green/Clean and Blue/Crunch)
- CONTROLS:** Dual Gain, Low, Mid, High, Dual Volume, Presence, Resonance
- CABINET:** Aluminum/Steel Chassis
- INDICATOR:** Red LED Jewel
- HANDLE:** Molded Plastic Strap with Black Powder Coated Caps
- FRONT PANEL:** Black EVH Striped Steel
- COVER:** Optional Amp Cover Available
- DEPTH:** 6.25" (15.9 cm)
- WIDTH:** 12.75" (32.5 cm)
- HEIGHT:** 7.0" (17.8 cm)
- WEIGHT:** 15 lb. (6.8 kg)
- PREAMP TUBES:** Four JJ ECC83S
- POWER TUBES:** Two JJ EL84 (Matched Duet)
- UNIQUE FEATURES:** Single-Button Footswitch Included for Channel Select (Overrides Front Panel Select), Dual-Concentric Gain and Volume for Precise and Independent Control of Each Channel
- OPTIONAL COVER:** 0221600006



5150III 15-WATT LBX HEAD

BIG SOUND. EASY TRANSPORT



- WATTAGE:** 15 Watts (Full Power) - 4 Watts (1/4 Power Switch)
- EFFECTS LOOP:** 1/4" Effects Send and Return Jacks
- INPUTS:** One 1/4"
- CHANNELS:** Two (Blue/Crunch and Red/Full Burn)
- CONTROLS:** Gain, Low, Mid, High, Volume, Presence, Rear Resonance
- CABINET:** Black Powder Coated Steel
- INDICATOR:** Red LED Jewel
- HANDLE:** Vinyl with Metal Insert and Black End Caps
- FRONT PANEL:** Black EVH Striped Steel
- COVER:** Optional Amp Cover Available
- DEPTH:** 6.25" (15.9 cm)
- WIDTH:** 12.75" (32.5 cm)
- HEIGHT:** 7.0" (17.8 cm)
- WEIGHT:** 15 lb. (6.8 kg)
- PREAMP TUBES:** Five JJ 6ECC83S
- POWER TUBES:** Two JJ 6L84 (Matched Duet)
- UNIQUE FEATURES:** Single-Button Footswitch Included for Channel Select (Overrides Front Panel Select)
- OPTIONAL COVER:** 0221600006



2X12 50W 6L6 COMBO

WATTAGE: 1 to 50 Watts (Continuously Variable with Power Level Control)

EFFECTS LOOP: 1/4" (Send/Return)

INPUTS: 1/4"

EXTENSION: 1/4" Stereo Headphone Jack and Two 1/4" Parallel

POWER HANDLING: Adjustable (50 Watts RMS Max Down to 1 Watt)

CHANNELS: Three (Clean, Crunch and Lead)

CONTROLS: Channel 1 and 2: Independent Volume and Gain with Shared Low, Mid and High;
Channel 3: Independent Volume, Gain, Low, Mid and High with Power Level, Reverb
and Global Presence and Resonance

EFFECTS: Reverb

CABINET: 7-Ply 5/8" Birch Plywood

INDICATOR: Red LED Jewel

HANDLE: Two Spring-Loaded Side Handles and One Molded Plastic Top Handle

FRONT PANEL: Ivory Powder Coated

COVER: Black or Ivory Textured Vinyl Covering with Black EVH Striped Steel Grille

OUTPUT IMPEDANCE: 4, 8 or 16 ohms (Selectable)

DEPTH: 12" (30.4 cm)

WIDTH: 27.5" (70 cm)

HEIGHT: 25" (63.5 cm)

WEIGHT: 90 lb. (40.82 kg)

SPEAKER: Two 8-ohm 12" Celestion G12M

IMPEDANCE: 16 ohms (Selectable)

PREAMP TUBES: Seven JJ ECC83S (12AX7)

POWER TUBES: Two JJ 6L6

UNIQUE FEATURES: MIDI Channel and Reverb Switchable, Master Resonance Control

ACCESSORIES: Four-Button Footswitch with Cable, Pop-Out Casters

OPTIONAL COVER: 0082061000

2254010010 - Black

2254010410 - Ivory



1X12 50W 6L6 COMBO

WATTAGE: 1 to 50 Watts (Continuously Variable with Power Level Control)

EFFECTS LOOP: 1/4" (Send/Return)

INPUTS: 1/4"

EXTENSION: 1/4" Stereo Headphone Jack and Two 1/4" Parallel

POWER HANDLING: Adjustable (50 Watts RMS Max Down to 1 Watt)

CHANNELS: Three (Clean, Crunch and Lead)

CONTROLS: Channel 1 and 2: Independent Volume and Gain with Shared Low, Mid and High;
Channel 3: Independent Volume, Gain, Low, Mid and High with Power Level, Reverb
and Global Presence and Resonance

EFFECTS: Reverb

CABINET: 7-Ply 5/8" Birch Plywood

INDICATOR: Red LED Jewel

HANDLE: Two Spring-Loaded Side Handles and One Molded Plastic Top Handle

FRONT PANEL: Ivory Powder Coated

COVER: Black or Ivory Textured Vinyl Covering with Black EVH Striped Steel Grille

OUTPUT IMPEDANCE: 4, 8 or 16 ohms (Selectable)

DEPTH: 12" (30.4 cm)

WIDTH: 22.5" (70 cm)

HEIGHT: 25" (63.5 cm)

WEIGHT: 65 lb. (29.48kg)

SPEAKER: One 16-ohm Special Designed Celestion

IMPEDANCE: 16 ohms (Selectable)

PREAMP TUBES: Seven JJ ECC83S (12AX7)

POWER TUBES: Two JJ 6L6

UNIQUE FEATURES: MIDI Channel and Reverb Switchable, Master Resonance Control

ACCESSORIES: Four-Button Footswitch with Cable, Pop-Out Casters

OPTIONAL COVER: 7706016000

2255010410 - Ivory

2255010010 - Black



NEW 5150 III 50 WATT 6L6 COMBOS

FROM THE BEDROOM TO THE STAGE

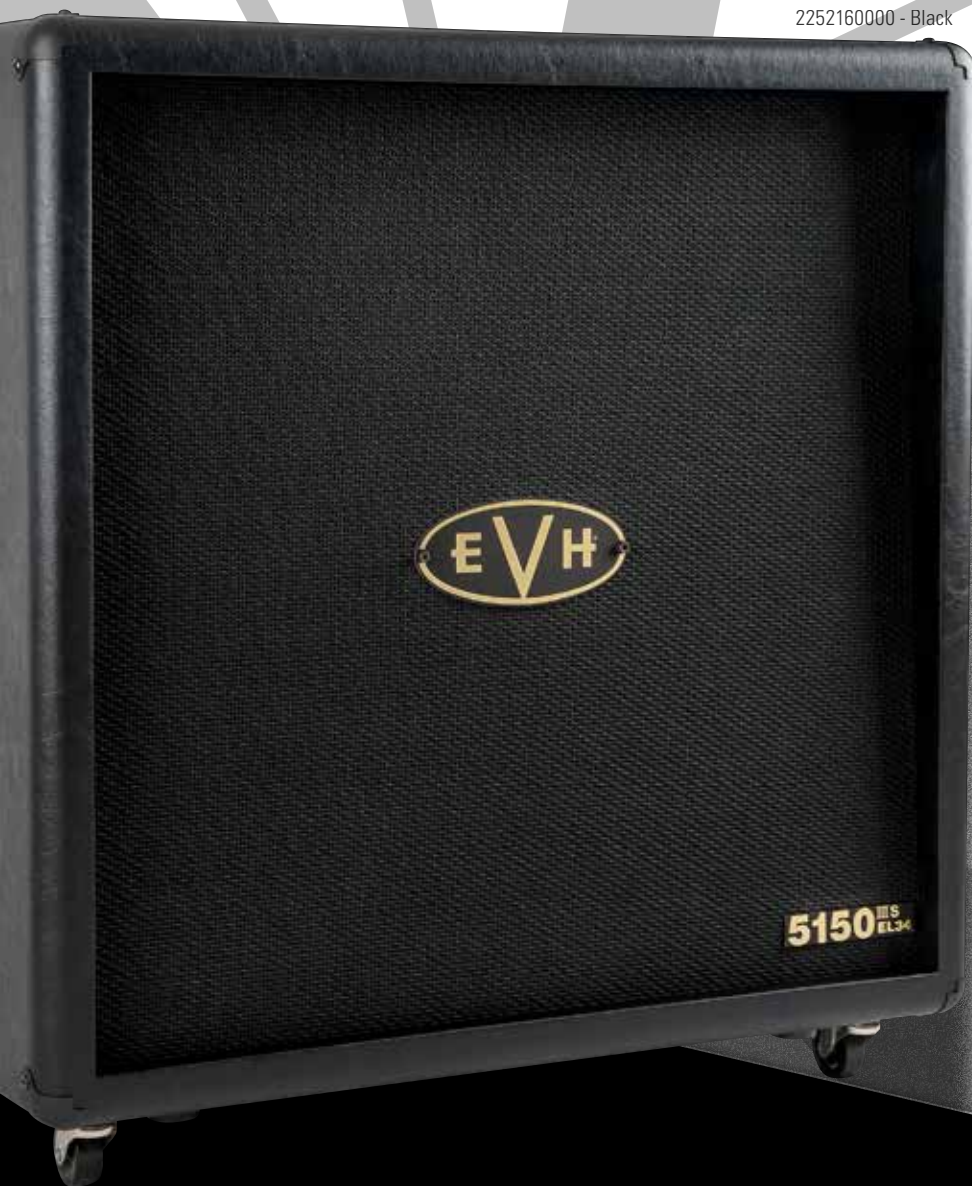
REDESIGNED WITH VERSATILE, ALL-NEW INDEPENDENT DUAL-CONCENTRIC CONTROLS THAT ALLOW FOR GAIN AND VOLUME LEVEL MATCHING, OUR 50-WATT 6L6 TUBE COMBO AMPS OFFER ARENA-SIZED SOUND IN AN EVH CELESTION POWERED COMPACT PACKAGE FOR MORE CONVENIENT TRANSPORT.



5150III CABINETS

THE ULTIMATE IN POWER AND PERFORMANCE

NOTHING LOOKS COOLER THAN A STACK OF SPEAKER CABINETS PULSING WITH POWER ON STAGE. USE THESE EXTENSION CABINETS — LOADED WITH 12" CUSTOM SPECIAL DESIGNED EVH CELESTION SPEAKERS — TO ENHANCE AND REFINE BOTH YOUR SOUND AND YOUR STYLE.



2252160000 - Black

5150III EL34 412ST CABINET

HANDLE: Two Recessed, Steel Bar Handles
SPEAKER: Four Signature Celestion® G12EVH
HARDWARE: Black
IMPEDANCE: 16 ohms
POWER: 100 Watts at 16 ohms
DEPTH: 29.25" (74.3 cm)
WIDTH: 30" (76.2 cm)
HEIGHT: 14" (35.6 cm) with Pop-Out Casters
CASTERS: Included
OPTIONAL COVER: 0073253000

5150III EL34 212ST CABINET

HANDLE: Molded Plastic Strap with Black Powder Coated Caps
SPEAKER: Two Signature Celestion G12H Anniversary Series Speakers
HARDWARE: Black; Top Mounting Posts (Chrome)
IMPEDANCE: 16 ohms
POWER: 50 Watts at 16 ohms
DEPTH: 14" (35.6 cm)
WIDTH: 30.1" (76.5 cm)
HEIGHT: 20" (50.8 cm) with Pop-Out Casters
CASTERS: Included
OPTIONAL COVER: 0082026000

2253101310 - Black



5150III 2X12 CABINET

HANDLE: Top Strap
SPEAKER: 2-12" Celestion G12H 30 Watts 70th Anniversary Series
HARDWARE: Black; Top Mounting Posts (Chrome)
IMPEDANCE: 16 ohms
POWER: 60 Watts at 16 ohms
HEIGHT: 20" (50.8 cm) with Pop-Out Casters
WIDTH: 30.1" (76.5 cm)
DEPTH: 14" (35.6 cm)
WEIGHT: 60 lb. (27.22 kg)
CASTERS: Included
OPTIONAL COVER: 0082026000

WHEN COUPLING THE 2X12 CAB WITH AN EVH 5150III 50W HEAD, THE 50-WATT HEAD CAN BE LOCKED SECURELY INTO PLACE, ALLOWING FOR DESIRED ANGLE TILT.

2253101010 - Black



2253101410 - Ivory



5150III 1X12 STRAIGHT CABINET

HANDLE: Top Strap
SPEAKER: 1-12" Celestion G12H 30 Watts 70th Anniversary Series
HARDWARE: Black
IMPEDANCE: 16 ohms
POWER: 30 Watts at 16 ohms
HEIGHT: 16.5" (42.0 cm)
WIDTH: 20" (50.8 cm)
DEPTH: 12" (30.48 cm)
WEIGHT: 36 lb. (16.3 kg)
CASTERS: N/A
OPTIONAL COVER: 0079198000

2253100010 - Black



2253100410 - Ivory



5150III 4X12 STRAIGHT CABINET

HANDLE: Recessed Side Handles
SPEAKER: 4-12" Celestion G12EVH
HARDWARE: Black
IMPEDANCE: 16 ohms
POWER: 100 Watts
HEIGHT: 30" (76.2 cm)
WIDTH: 29.25" (74.3 cm)
DEPTH: 14" (35.56 cm)
WEIGHT: 88 lb. (40 kg)
CASTERS: Included
OPTIONAL COVER: 0073253000

2252100000 - Black



2252100400 - Ivory





EVH ACCESSORIES



0229653000



0226100506

**EVERYBODY
WANTS
SOME.**



0221512006



0221511006



0222136100

0222136000



0220140000



0228817100



0220835000



0220928000



0225150100



Various Assortment



0223534100



5550121467



9123002000



9129653506



0220150042

0220150046

PICKUPS

- 0222136100 EVH Frankenstein™ Humbucking with Chrome Cover
- 0222136000 EVH Frankenstein Humbucking Pickup
- 0222137001 EVH Wolfgang Neck Pickup, Black and White
- 0222137002 EVH Wolfgang Bridge Pickup, Black and White
- 0222138001 EVH Wolfgang Neck Pickup, Black
- 0222138002 EVH Wolfgang Bridge Pickup, Black
- 0222139001 EVH Wolfgang Neck Pickup, Chrome
- 0222139002 EVH Wolfgang Bridge Pickup, Chrome

CUSTOM POTENTIOMETERS

- 0220831000 EVH Low-Friction Pot (250k)
- 0220835000 EVH Low-Friction Pot (500k)
- 0220836000 EVH High-Friction Pot (250k)

PREMIUM GUITAR CABLES

- 0220100000 EVH Premium Cable 1' S to S
- 0220140000 EVH Premium Cable 14' S to S
- 0220200000 EVH Premium Cable 20' S to S
- 0220600000 EVH Premium Cable 6' S to S

FOOTSWITCHES & CABLES

- 0091166000 50-Watt Head 4 Button
- 0096467000 50-Watt Combo 4 Button
- 0071225000 7 Pin DIN 25' cable

STRAPS

- 0220660006 EVH Premium Strap - 56"
- 0220660007 EVH Premium Strap - 42"
- 0220667007 EVH Nylon Strap - 42"
- 0220667006 EVH Nylon Strap - 56"

STRAP CLASPS WITHEYE HOOKS

- 0220928000 Strap Clasps with Eye Hooks

PREMIUM STRINGS

- 0220150042 EVH Premium Strings (.009-.042)
- 0220150046 EVH Premium Strings (.009-.046)
- 0220150052 EVH Premium Strings (.010-.050)
- 0220150146 EVH Premium Strings (.010-.046)

SIGNATURE PICKS

- 0220351001 Premium Pick Tin, 12 Pack
- 0221351202 EVH Signature Picks Red/Black 6 Pack .60
- 0221351203 EVH Signature Picks Red/Black 6 Pack .73
- 0221351204 EVH Signature Picks Red/Black 6 Pack .88
- 0221351205 EVH Signature Picks Red/Black 6 Pack 1.00
- 0221351402 EVH Signature Picks Black/White 6 Pack .60
- 0221351403 EVH Signature Picks Black/White 6 Pack .73
- 0221351404 EVH Signature Picks Black/White 6 Pack .88
- 0221351405 EVH Signature Picks Black/White 6 Pack 1.00
- 0221351602 EVH Signature Picks Gray/Black 6 Pack .60
- 0221351603 EVH Signature Picks Gray/Black 6 Pack .73
- 0221351604 EVH Signature Picks Gray/Black 6 Pack .88
- 0221351605 EVH Signature Picks Gray/Black 6 Pack 1.00
- 0221351802 EVH Signature Picks White/Black 6 Pack .60
- 0221351803 EVH Signature Picks White/Black 6 Pack .73
- 0221351804 EVH Signature Picks White/Black 6 Pack .88
- 0221351805 EVH Signature Picks White/Black 6 Pack 1.00

D-TUNA

- 5550121466 EVH D-Tuna, Red
- 5550121467 EVH D-Tuna, Black
- 5550121468 EVH D-Tuna, Chrome
- 5550121469 EVH D-Tuna, Gold

EVH GUITAR WORK STATION

- NEW 5550121466 EVH Guitar Work Station

AMPLIFIER/ENCLOSURE COVERS

- 0073406000 5150III 100-Watt Head Amplifier Cover, Black
- 0079197000 5150III 50-Watt Head Amplifier Cover, Black
- 0221600006 5150III LBX Head Gig Bag, Black
- 0082061000 5150III 212 Combo Cover, Black
- 7706016000 5150III 112 Combo Cover, Black
- 0079198000 5150III 1x12 Cabinet Cover, Black
- 0082026000 5150III 2x12 Cabinet Cover, Black
- 0073253000 5150III 4x12 Cabinet Cover, Black

CASES AND GIG BAGS

- 0226100506 Striped Series Hardshell Case, Black
- 0090916000 EVH Wolfgang Hardshell Case, Black
- 0229653000 Left-Hand Wolfgang Hardshell Case, Black
- 0221512006 EVH Gig Bag, Black With Red Interior
- 0221511006 EVH Star Gig Bag, Black With Red Interior

COLLECTIBLES

- NEW 0225150100 EVH 5150 Decal
- 0224800400 EVH Micro Stack
- NEW 0223534100 5150III EL34 Micro Stack, Black and Gold
- 9123004000 24" Barstool
- 9123005000 36" Barstool

CLOTHING

- NEW 9129653306 EVH Wolfgang T-Shirt, Black, S
- NEW 9129653406 EVH Wolfgang T-Shirt, Black, M
- NEW 9129653506 EVH Wolfgang T-Shirt, Black, L
- NEW 9129653606 EVH Wolfgang T-Shirt, Black, XL
- NEW 9129653706 EVH Wolfgang T-Shirt, Black, XXL
- 9122001306 EVH Logo T-Shirt, Black, S
- 9122001406 EVH Logo T-Shirt, Black, M
- 9122001506 EVH Logo T-Shirt, Black, L
- 9122001606 EVH Logo T-Shirt, Black, XL
- 9122001806 EVH Logo T-Shirt, Black, XXL
- 9122001906 EVH Logo T-Shirt, Black, XXXL
- 9122015306 EVH Woven Shirt, Black, S
- 9122015406 EVH Woven Shirt, Black, M
- 9122015506 EVH Woven Shirt, Black, L
- 9122015606 EVH Woven Shirt, Black, XL
- 9122015806 EVH Woven Shirt, Black, XXL
- 9122015906 EVH Woven Shirt, Black, XXXL
- 9123002000 EVH Knitted Beanie, Black
- 9123003000 EVH Baseball Hat, Black



EVHGEAR.COM

© 2018 EMCO, EVH, the EVH logo, 5150, 5150III, D-Tuna, Frankenstein, Wolfgang and the unique headstock design of this guitar are registered trademarks of EVH, Inc. All rights reserved. Specifications are subject to change.