

B.C. Rich™



WARLOCK
WG

ST
RST

BICH
RBG

MOCKINGBIRD
RMG

IRONBIRD
RIBG

EAGLE
REG

Custom Finish for B. C. Rich N.J. Series II



WGC-24G/TPNV WGC-23G/TPR STC-24G/TPOR STC-24B/PBU



BK ---- Black



TPR ---- Transparent Red



GRW ---- Glitter Rock White



AR ---- Arrest-me-red

B.C. Rich TM



WARLOCK
RWB



MOCKINGBIRD
RMB



EAGLE
REB



SB
RSB

Color Options for B. C. Rich N.J. Series I & II

TPNV --- Transparent Navy Blue



FLYL --- Fluorescent Yellow



FLPK --- Fluorescent Pink



FLGR --- Fluorescent Green



TPOR --- Transparent Orange



MBU --- Ice Blue

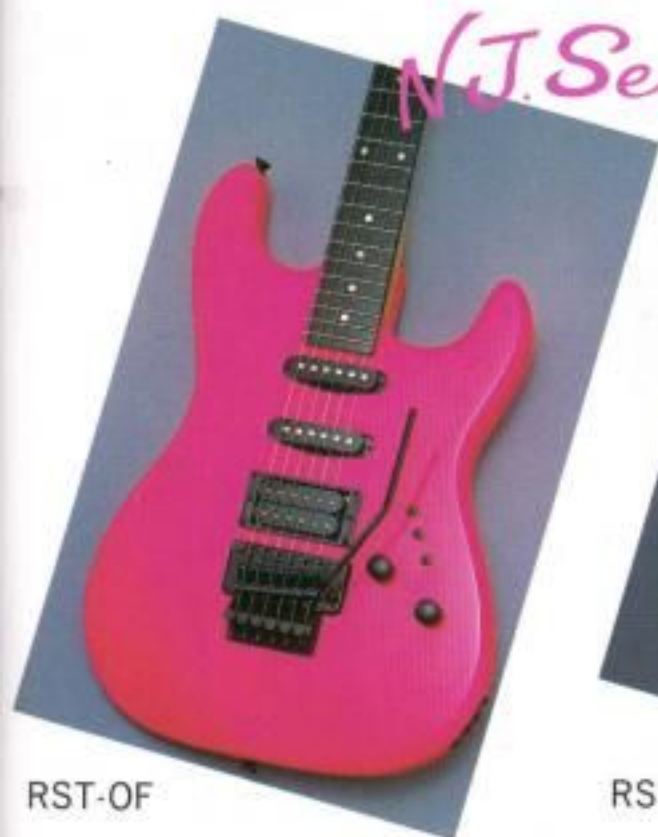


PSB --- Purple Burst



MCR --- Multi-Crackle

N.J. Series I



RST-OF

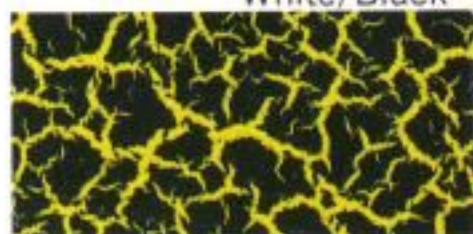


RSB-O

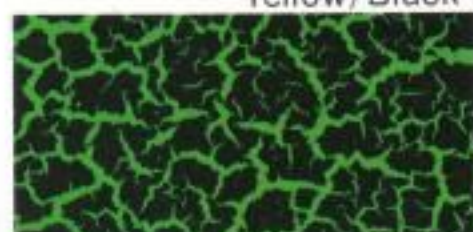
Crackle Finish



White/Black



Yellow/Black



Green/Black

N.J. Series II

Back View of
"Supper-2100" Neck
For Bass



WG-20F

Back View of
"Supper-2100" Neck
For Guitar



WB-20

N.J. Series I

GUITARS

Name	Model No.	Pick-up & Control	Specifications
ST.	RST-OF	→ 2S. 1HB 1V. 1T. 3 mini	Canadian-Maple Neck (Bolt-on), Rosewood Fingerboard, Nickel-Silver Frets, Alder Body, Original Pick-ups, "Floyd-Rose" Licensed Tremolo Unit, All Black Hardware.
WARLOCK	RWG-OF	→ 2HB 1V. 2T. 1SW	
MOCKINGBIRD ...	RMG-OF	→ 2HB 1V. 2T. 1SW	
BICH	RBG-OF	→ 2HB 1V. 2T. 1SW	
IRONBIRD	RIBG-OF	→ 2HB 1V. 2T. 1SW	

BASSES

Name	Model No.	Pick-up & Control	Specifications
SB	RSB-O	→ 1PB. 1JB 1V. 1T. 1BL	Canadian-Maple Neck (Bolt-on), Rosewood Fingerboard, Nickel-Silver Frets, Alder Body, Original Pick-ups, All Black Hardware.
WARLOCK	RWB-O	→ 1PB 1V. 1T	
MOCKINGBIRD ...	RMB-O	→ 1PB 1V. 1T	
IRONBIRD	RIBB-O	→ 1PB 1V. 1T	

N.J. Series II

GUITARS

Name	Model No.	Pick-up & Control	Specifications
ST.	ST	→ 2S. 1HB 1V. 1T. 3 mini	"Supper-2100" Neck (Bolt-on), Selected Rosewood Fingerboard, Nickel-Silver Frets, Alder/Maple Body, "Floyd-Rose" Licensed Tremolo Unit, Original Pick-ups, Chrome Hardware.
WARLOCK	WG	→ 2HB 1V. 2T. 1SW	
MOCKINGBIRD ...	MG	→ 2HB 1V. 2T. 1SW	
IRONBIRD	IG	→ 2HB 1V. 2T. 1SW	
BICH	BG	→ 2HB 1V. 2T. 1SW	
EAGLE	EG	→ 2HB 1V. 2T. 1SW	

BASSES

Name	Model No.	Pick-up & Control	Specifications
WARLOCK	WB	→ 2PB 1V. 1T. FULL	"Supper-2100" Neck (Bolt-on), Ebonic-Fingerboard, Nickel-Silver Frets, Original Bridge Tailpiece & Pick-ups, Chrome Hardware.
MOCKINGBIRD ...	MB	→ 2PB 1V. 1T. FULL	
EAGLE	EB	→ 2PB 1V. 1T. FULL	

OPTIONS for N.J. Series II Only

- ※ Flamed Maple Top
- ※ Bounded Body
- ※ Black Hardware
- ※ Gold Hardware
- ※ Left Hand Model
- ※ Custom Color
- ※ Non Tremolo Model

THE HISTORY OF B.C. RICH

In 1947, pioneer luthier Bernardo Mason Rico started building classical and flamenco guitars in a small shop in East Los Angeles. Years later, he was joined by his son Bernie, and, together, the Rico's built and repaired acoustic guitars for some of the most popular musicians in the early seventies, including The Beach Boys, the Association, John Denver, Kenny Rogers, and The New Christie Minstrels.

Sensing the public demand for something different in electric guitars, Bernie Rico was the first commercial guitar maker to introduce such radical shapes as The Wave, The Seagull, and The Mockingbird....And suddenly....Modern B.C. RICH was born!

From the earliest days of B.C. RICH, Bernie Rico's guitars have been at the cutting edge of rock 'n' roll....And what was pioneered by Bernie Rico has become today's standard in the commercial art of manufacturing electric guitars.

Bernie Rico personally developed the heel-less neckthru concept, and B.C. RICH was the first company to make radically shaped instruments, including The Warlock and The Bich; guitars which have become a must in the arsenal of today's heavy metal guitar players. B.C. RICH was also the first guitar company to use exotic woods and inlays in electric guitars, and B.C. RICH paved the way for electric guitar graphics when PAUL STANLEY took the stage with his leopardskin SEAGULL in the late 1970's.

Over the years, B.C. RICH has created custom guitars for many of Rock's superstars, including JOE PERRY (AEROSMITH), NEIL GERALDO (THE PAT BENATAR BAND) DON FELDER (THE EAGLES) NIKKI SIXX (MOTLEY CRUE), TONY IOMI (BLACK SABBATH), STEVE HUNTER and DICK WAGNER (THE ALICE COOPER BAND), AL COOPER, and the legendary RICK DERRENGER.

Today, B.C. Rich employs the world's best guitar craftsman and designers, and B.C. RICH is the only guitar manufacturing Company that builds instruments completely by hand.

Modern rockers continue to flock to Los Angeles to commission Bernie Rico to build their guitars and basses....Rock megastars such as PAUL STANLEY and BRUCE KULICK (KISS), BOBBY DALL and C.C. DEVILLE (POISON), MARK KENDALL (GREAT WHITE) TRACY GUNS (L.A. GUNS), KERRY KING (SLAYER) LITA FORD, MITCH PARRY (M.S.G.), and phenomenal TONY MACALPINE.

Each B.C. RICH instrument is of the highest possible quality, and is inspected by the master luthier BERNIE RICO. And every, B.C. Rich guitar and bass contains a piece of rock 'n' roll history!

B.C. RICH International

P.O. Box 60119, Los Angeles California 90060 U.S.A

IIDA CORPORATION

5-39 Takabata, Nakagawa-ku, Nagaya, Japan