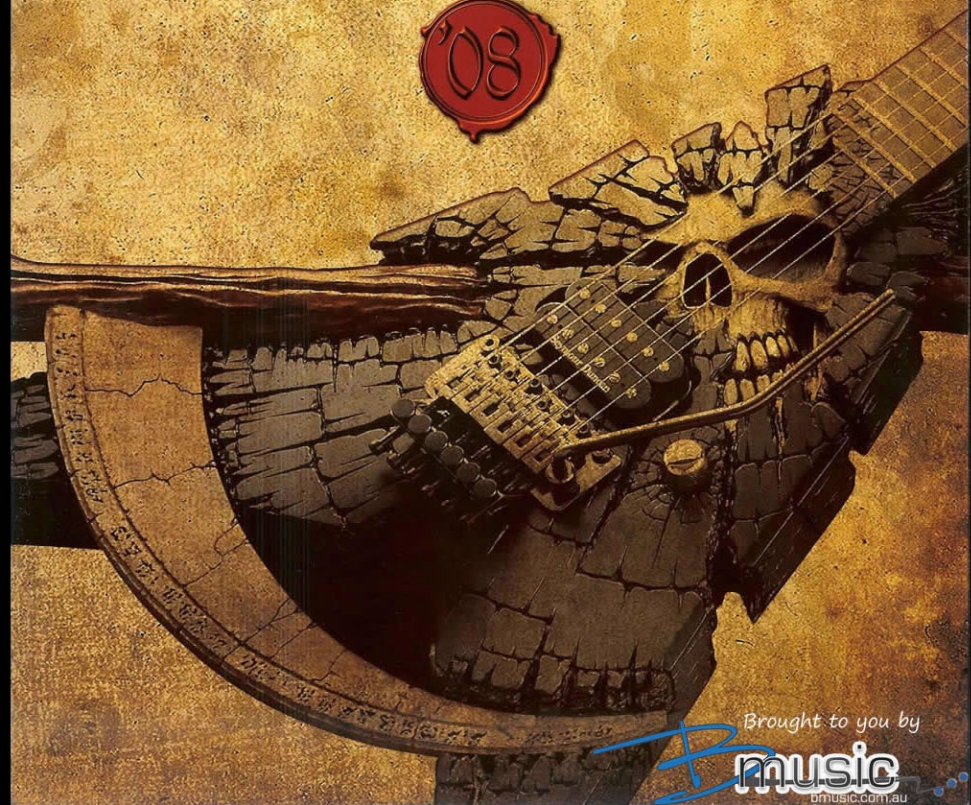




EXPORT MODELS CATALOG



Brought to you by

music
music.com.au

Eclipse-I CTM Vibrato

BODY Mahogany with Custom Binding / Maple Top
NECK Mahogany with Custom Binding
FINGER BOARD Ebony
CONSTRUCTION Set-neck
SCALE 24.75
TUNERS Gotoh Magnum Lock
BRIDGE Gotoh Tune-matic w/Bigsby B7 Vibrato
HARDWARE COLOR Gold
FRET 22 / XJ
NECK PICKUP Seymour Duncan SH-1n w/Gold Cover
BRIDGE PICKUP Seymour Duncan SH-4 w/Gold Cover
CONTROL 2 Volume, 2 Tone, Sway toggle switch
COLOR VBK



Bigsby B7 Vibrato

01
 Eclipse-I CTM Vibrato
 VBK



Eclipse-I CTM

BODY Mahogany with Custom Binding / Maple Top
NECK Mahogany with Custom Binding
FINGER BOARD Ebony
CONSTRUCTION Set-neck
SCALE 24.75
TUNERS Gotoh Magnum Lock
BRIDGE Gotoh Tune-matic
HARDWARE COLOR Gold
FRET 22 / XJ
NECK PICKUP EMG-50
BRIDGE PICKUP EMG-81
CONTROL 2 Volume, 2 Tone, Sway toggle switch
COLOR YBK, GBK, DPS, SW, YW

02
 Eclipse-I CTM
 SW



03
 Eclipse-I CTM
 YBK



04
 Eclipse-I CTM
 GBK

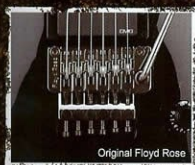


ESP
 Standard Series:
Eclipse

Eclipse-I CTM FR ^{CS}

(with Floyd Rose)

- BODY Mahogany with Custom Binding / Maple Top
- NECK Mahogany with Custom Binding
- FINGER BOARD Ebony
- CONSTRUCTION Set-neck
- SCALE 24.75"
- TUNERS Gotch Deluxe
- BRIDGE Original Floyd Rose
- HARDWARE COLOR Black Nickel
- FRET 22 / XJ
- NECK PICKUP EMG-60
- BRIDGE PICKUP EMG-81
- CONTROL 2 Volume, 2 Tone, 3-way toggle switch
- COLOR GBK



07
Eclipse-I CTM PL
Black

ESP

Standard Series:
Eclipse



08
Eclipse-I CTM PL
Black

Eclipse-I CTM PL ^{CS}

- BODY Mahogany with Silver Binding / Maple Top
- NECK Mahogany with Silver Binding
- FINGER BOARD Ebony
- CONSTRUCTION Set-neck
- SCALE 24.75"
- TUNERS Gotch Magnum Lock
- BRIDGE Gotch Tune-matic
- HARDWARE COLOR DHR
- FRET 22 / XJ
- NECK PICKUP EMG-60
- BRIDGE PICKUP EMG-81
- CONTROL 2 Volume, 2 Tone, 3-way toggle switch
- COLOR BKSS



05
Eclipse-I CTM FR
Purple



06
Eclipse-I CTM FT
Natural

Eclipse-I CTM FT ^{CS}

(Full Thickness)

- BODY Mahogany with Custom Binding / Maple Top
- SCALE 25mm Body-thickness
- NECK Mahogany with Custom Binding
- FINGER BOARD Ebony
- CONSTRUCTION Set-neck
- SCALE 24.75"
- TUNERS Gotch Magnum Lock
- BRIDGE Gotch Tune-matic
- HARDWARE COLOR Gold
- FRET 22 / XJ
- NECK PICKUP EMG-60
- BRIDGE PICKUP EMG-81
- CONTROL 2 Volume, 2 Tone, 3-way toggle switch
- COLOR YSK, SW



09
Eclipse-I CTM FT
Black

Eclipse-II 01 02 03

BODY Mahogany with White Binding / Quilted Maple Top
NECK Mahogany with White Binding
FINGER BOARD Rosewood
CONSTRUCTION Set-neck
SCALE 24.75
TUNERS Gotoh Magnum Lock
BRIDGE Gotoh Tune-matic
HARDWARE COLOR Chrome or Black Nickel
FRET 22 / XJ
NECK PICKUP EMG81
BRIDGE PICKUP EMG81
CONTROL 2 Volume, 2 Tone, 3-way toggle switch
COLOR STB, DBS, ACS, STBK



01
Eclipse-II
DBS



02
Eclipse-II
ACS



03
Eclipse-II
STB

Eclipse-II FM/SD 04

BODY Mahogany with White Binding / Flame Maple Top
NECK Mahogany with White Binding
FINGER BOARD Rosewood
CONSTRUCTION Set-neck
SCALE 24.75
TUNERS Gotoh Magnum Lock
BRIDGE Gotoh Tune-matic
HARDWARE COLOR Chrome
FRET 22 / XJ
NECK PICKUP Seymour Duncan SH-1n
BRIDGE PICKUP Seymour Duncan SH-4
CONTROL 2 Volume, 2 Tone (with push-push split switch), 3-way toggle switch
COLOR VHB



04
Eclipse-II FM/SD
VHB



05
Eclipse-II
STB



06
Eclipse-II
STB

Eclipse-I 05 06

BODY Mahogany with White Binding / Maple Top
NECK Mahogany with White Binding
FINGER BOARD Rosewood
CONSTRUCTION Set-neck
SCALE 24.75
TUNERS Gotoh Magnum Lock
BRIDGE Gotoh Tune-matic
HARDWARE COLOR Chrome
FRET 22 / XJ
NECK PICKUP Seymour Duncan SH-1n
BRIDGE PICKUP Seymour Duncan SH-4
CONTROL 2 Volume, 2 Tone (with push-push split switch), 3-way toggle switch
COLOR STB, DBS

ESP
Standard Series:
Eclipse



USA Eclipse-II VBK, VW 07 08

BODY Mahogany with Custom Binding / Maple Top
NECK Mahogany with Custom Binding
FINGER BOARD Ebony
CONSTRUCTION Set-neck
SCALE 24.75
TUNERS Gotoh Magnum Lock
BRIDGE Gotoh Tune-matic
HARDWARE COLOR Gold
FRET 22 / XJ
NECK PICKUP EMG-60
BRIDGE PICKUP EMG-81
CONTROL 2 Volume, 1 Tone, 3-way toggle switch
COLOR VBK-VW



07
USA Eclipse-II VBK



08
USA Eclipse-II VBK



09
USA Eclipse-II VBK



10
USA Eclipse-II VBK



11
USA Eclipse-II SW

USA Eclipse-II SW 09

BODY Mahogany with Custom Binding / Maple Top
NECK Mahogany with Custom Binding
FINGER BOARD Ebony
CONSTRUCTION Set-neck
SCALE 24.75
TUNERS Gotoh Magnum Lock
BRIDGE Gotoh Tune-matic
HARDWARE COLOR Black Nickel
FRET 22 / XJ
NECK PICKUP EMG-60
BRIDGE PICKUP EMG-81
CONTROL 2 Volume, 1 Tone, 3-way toggle switch
COLOR SW

12
USA Eclipse-II SW



USA Eclipse-II Aged AHB 09

BODY Mahogany with White Binding / Quilted Maple Top
NECK Mahogany with White Binding
FINGER BOARD Rosewood
CONSTRUCTION Set-neck
SCALE 24.75
TUNERS Gotoh Magnum Lock
BRIDGE Gotoh Tune-matic
HARDWARE COLOR Chrome, Black Nickel
FRET 22 / XJ
NECK PICKUP Seymour Duncan SL-2 w/ Aged Nickel Cover
BRIDGE PICKUP Seymour Duncan SL-2 w/ Aged Nickel Cover
CONTROL 2 Volume, 1 Tone, 3-way toggle switch
COLOR Aged Amber Burst

ESP

Standard Series:
Eclipse

USA Eclipse-II 09 10

BODY Mahogany with White Binding / Quilted Maple Top
NECK Mahogany with White Binding
FINGER BOARD Rosewood
CONSTRUCTION Set-neck
SCALE 24.75
TUNERS Gotoh Magnum Lock
BRIDGE Gotoh Tune-matic
HARDWARE COLOR Chrome, Black Nickel
FRET 22 / XJ
NECK PICKUP EMG-60
BRIDGE PICKUP EMG-81
CONTROL 2 Volume, 1 Tone, 3-way toggle switch
COLOR STBC, ACBB

Horizon NT 01 02

| | |
|----------------|---|
| BODY | Alder with Pearl Binding (BK) |
| NECK | Ash with White Binding (STBK) or White Binding (BK) |
| FINGER BOARD | Ebony |
| CONSTRUCTION | Neck-thru-body |
| SCALE | 25.5 |
| TUNERS | Goitch Magnum Lock |
| BRIDGE | Goitch Tune-matic |
| HARDWARE COLOR | Black Nickel, Chrome |
| FRET | 24 / XJ |
| NECK PICKUP | Seymour Duncan SH-1n |
| BRIDGE PICKUP | Seymour Duncan SH-4 |
| CONTROL | 1 Volume (with push-push split switch), 1 Tone, 3-way toggle switch |
| COLOR | BK, STBK |



01
Horizon NT
BK



02
Horizon NT
PEARL



06
Horizon NT
BK



05
Horizon NT-II
BKAZ

Horizon NT-II 03 04 05 06

| | |
|----------------|---|
| BODY | Mahogany with White Binding / Quilted Maple Top |
| NECK | Maple 3P with White Binding |
| FINGER BOARD | Ebony |
| CONSTRUCTION | Neck-thru-body |
| SCALE | 25.5 |
| TUNERS | Goitch Magnum Lock |
| BRIDGE | Goitch Tune-matic |
| HARDWARE COLOR | Black Nickel, Chrome |
| FRET | 24 / XJ |
| NECK PICKUP | Seymour Duncan SH-1n |
| BRIDGE PICKUP | Seymour Duncan SH-4 |
| CONTROL | 1 Volume (with push-push split switch), 1 Tone, 3-way toggle switch |
| COLOR | STBC, DBSP, BKAC, STBK |

04
Horizon NT-II
BKAC



03
Horizon NT-II
STBC



07
Horizon FR

Horizon FR 07 08

| | |
|----------------|---|
| BODY | Alder with White Binding |
| NECK | Alder with White Binding |
| FINGER BOARD | Maple |
| CONSTRUCTION | Neck-thru-body |
| SCALE | 25.5 |
| TUNERS | Goitch Magnum Lock |
| BRIDGE | Goitch Tune-matic |
| HARDWARE COLOR | Black Nickel |
| FRET | 24 / XJ |
| NECK PICKUP | Seymour Duncan SH-1n |
| BRIDGE PICKUP | Seymour Duncan AP-3 |
| CONTROL | 1 Volume, 1 Tone (with push-push split switch), 3-way toggle switch |
| COLOR | SW, BK |

ESP
Standard Series:
Horizon



Horizon FR-II 0000

BODY Alder with White Binding / Quilted Maple Top
NECK Maple 3P with White Binding
FINGER BOARD Ebony
CONSTRUCTION Neck-thru-body
SCALE 25.6
TUNERS Grob
BRIDGE Original Floyd Rose
HARDWARE COLOR Chrome, Black Nickel
FRET 24 (J.U.)
NECK PICKUP Seymour Duncan SH-1n
BRIDGE PICKUP Seymour Duncan TB-4
CONTROL 1 Volume, 1 Tone (with push-push Top switch), 3-way toggle switch
COLOR STBG, BKAD, DBSS, STBK



09
Horizon FR-II
STR



10
Horizon FR-II
STR



11
Horizon FR-II
STR

Horizon FR-II STR 0

BODY Alder with White Binding / Quilted Maple Top
NECK Maple 3P with White Binding
FINGER BOARD Ebony
CONSTRUCTION Neck-thru-body
SCALE 25.6
TUNERS Grob
BRIDGE Original Floyd Rose
HARDWARE COLOR Black Nickel
FRET 24 (J.U.)
NECK PICKUP EMG-85
BRIDGE PICKUP EMG-81
CONTROL 1 Volume, 1 Tone, 3-way toggle switch
COLOR ISTR



12
Horizon FR-II
STR



08
Horizon FR-II
STR



14
Horizon FR-II
STR



13
Horizon FR-II
STR

Horizon NT-II FM 000

BODY Alder with White Binding / Flame Maple Top
NECK Maple 3P with White Binding
FINGER BOARD Ebony
CONSTRUCTION Neck-thru-body
SCALE 25.6
TUNERS Grob
BRIDGE Original MagnaTone Lock
HARDWARE COLOR Black Nickel, Chrome
FRET 24 (J.U.)
NECK PICKUP Seymour Duncan SH-1n
BRIDGE PICKUP Seymour Duncan SH-4
CONTROL 1 Volume (with push-push split switch), 1 Tone, 3-way toggle switch
COLOR ISTR, DBSS



NV-STD 01 02

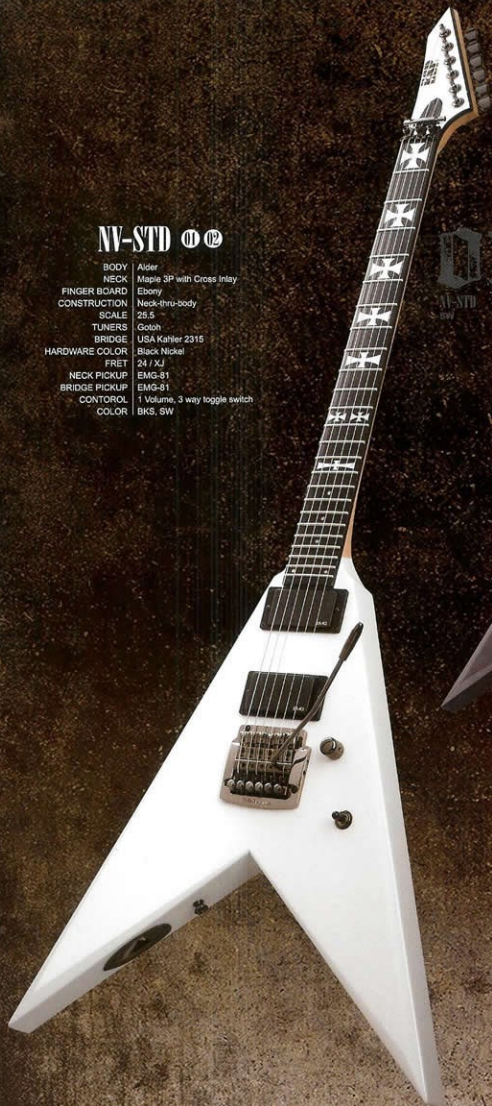
| | |
|----------------|-------------------------------|
| BODY | Alder |
| NECK | Maple 3P with Cross Inlay |
| FINGER BOARD | Ebony |
| CONSTRUCTION | Neck-thru-body |
| SCALE | 25.5" |
| TUNERS | Godin |
| BRIDGE | USA Kahler 2315 |
| HARDWARE COLOR | Black Nickel |
| FRET | 24 / XJ |
| NECK PICKUP | EMG-81 |
| BRIDGE PICKUP | EMG-81 |
| CONTROL | 1 Volume, 3 way toggle switch |
| COLOR | BKS, 5W |

01

NV-STD
BKS, 5W

02

NV-STD
BKS



550-5

550-5

550-5

550-5

550-5

550-5

550-5

550-5

550-5

550-5

550-5

550-5

V-STD 03

| | |
|----------------|---------------------------------------|
| BODY | Mahogany |
| NECK | Maple 3P |
| FINGER BOARD | Rosewood with White binding |
| CONSTRUCTION | Neck-thru-body |
| SCALE | 25.5" |
| TUNERS | Sperzel Locking Tuner |
| BRIDGE | Gibson Les Paul / SIBING 100 |
| HARDWARE COLOR | Black Nickel |
| FRET | 24 / XJ |
| NECK PICKUP | Seymour Duncan SH-1N |
| BRIDGE PICKUP | Seymour Duncan SH-10 |
| CONTROL | 2 Volume, 1 Tone, 5 way toggle switch |
| COLOR | TV |

03

V-STD
TV



Brought to you by

music

music.com.au

ESP
Standard Series:
N. Nu



04
HUSTON VT-II
BLACK



SV-STD 01 05

BODY: Alder
NECK: Maple 3P
FINGER BOARD: Ebony with White binding
CONSTRUCTION: Neck-in-to-body
SCALE: 25.5"
TUNERS: Gotoh
BRIDGE: Original Floyd Rose®
HARDWARE COLOR: Chrome
FRET: 24 / J3
NECK PICKUP: EMG81
BRIDGE PICKUP: EMG81
CONTROL: 1 Volume, Sway toggle, twitch
COLOR: WH with BK pinstripe, BK with WH pinstripe

05
HUSTON VT-II
BLACK



SV-INT 06

BODY: Alder
NECK: Maple 3P
FINGER BOARD: Ebony
CONSTRUCTION: Neck-in-to-body
SCALE: 25.5"
TUNERS: Sperzel Locking Tune
BRIDGE: Gotoh Tune-matic
HARDWARE COLOR: Black Nickel
FRET: 24 / X1
PICKUP: EMG81
CONTROL: 1 Volume, 2 Tone
COLOR: BK

06
HUSTON VT-II
BLACK





01
FX-STD
SW

FX-STD 01 02 03

BODY Mahogany
NECK Mahogany
FINGER BOARD Rosewood
CONSTRUCTION Set-neck
SCALE 24.75
TUNERS Sperzet Locking Tuner
BRIDGE Gotoh Tune-matic
HARDWARE COLOR Black Nickel
FRET 22 / XJ
NECK PICKUP EMG60
BRIDGE PICKUP EMG81
CONTROL 1 Volume, 1 Tone,
3-way toggle switch
COLOR PBS, BKS, SW



02
FX-STD
PBB



04
EX Diamond Plate

EX Diamond Plate 04

BODY Mahogany
with Black Anodized Aluminum Diamond Plate
NECK Maple 3P
FINGER BOARD Rosewood
CONSTRUCTION Set-neck
SCALE 24.75
TUNERS Gotoh
BRIDGE Gotoh Tune-matic
HARDWARE COLOR Black Nickel
FRET 22 / XJ
NECK PICKUP EMG 60
BRIDGE PICKUP EMG 81
CONTROL 1 Volume, 1 Tone, 3 way toggle switch
COLOR Black with Diamond Plate



03
FX-STD
SW



05
FX-STD
SW

FX-STD 05

BODY Mahogany
NECK Maple 3P
FINGER BOARD Rosewood
CONSTRUCTION Set-neck
SCALE 24.75
TUNERS Gotoh
BRIDGE Gotoh Tune-matic
HARDWARE COLOR Black Nickel
FRET 22 / XJ
NECK PICKUP EMG81
BRIDGE PICKUP EMG81
CONTROL 1 Volume, 1 Tone,
3-way toggle switch
COLOR SW, SW

ESP
Standard Series:
EX, FX



ESP

Standard Series:

F. Phoenix



F-STD S 06

BODY Mahogany
NECK Maple 3P
FINGER BOARD Ebony with Sanskrit Inlay
CONSTRUCTION Neck-thru-body
SCALE 25.5
TUNERS Sperzel Locking Tuner
BRIDGE Gotoh Tune-matic
HARDWARE COLOR Black Nickel
FRET 24 / XJ
NECK PICKUP EMG-80
BRIDGE PICKUP EMG-81
CONTROL 1 Volume, 1 Tone
COLOR 3 way toggle switch
BKS



F-STD S7 07

BODY Mahogany
NECK Maple 3P
FINGER BOARD Ebony with Sanskrit Inlay
CONSTRUCTION Neck-thru-body
SCALE 25.5
TUNERS Sperzel Locking Tuner
BRIDGE Gotoh Tune-matic
HARDWARE COLOR Black Nickel
FRET 24 / XJ
NECK PICKUP EMG-707
BRIDGE PICKUP EMG-707
CONTROL 1 Volume, 1 Tone
COLOR 3 way toggle switch
BKS



F-STD FR 08

BODY Mahogany
NECK Maple 3P
FINGER BOARD Ebony with Sanskrit Inlay
CONSTRUCTION Neck-thru-body
SCALE 25.5
TUNERS Sperzel Locking Tuner
BRIDGE Gotoh Tune-matic
HARDWARE COLOR Black Nickel
FRET 24 / XJ
NECK PICKUP EMG-707
BRIDGE PICKUP EMG-707
CONTROL 1 Volume, 1 Tone
COLOR 3 way toggle switch
BKS



Phoenix-II 09 10

BODY Mahogany
NECK Maple 3P
FINGER BOARD Ebony
CONSTRUCTION Neck-thru-body
SCALE 25.5
TUNERS Sperzel Minimum Lock
BRIDGE Gotoh TOM & Tassel
HARDWARE COLOR Chrome
FRET 24 / XJ
NECK PICKUP Seymour Duncan SH-7n
BRIDGE PICKUP Seymour Duncan SH-11
CONTROL 3 way volume, Neck Volume, 3 way Toggle Switch
COLOR BKS, SW

M-II/R EMG SW 01

BODY Alder
NECK Maple
FINGER BOARD Rosewood
CONSTRUCTION Bolt-on
SCALE 25.5"
TUNERS Gotoh
BRIDGE Original Floyd Rose
HARDWARE COLOR Black Nickel
FRET 22 / XJ
NECK PICKUP EMG 81
BRIDGE PICKUP EMG 81
CONTROL 1 Volume, 3way toggle switch
COLOR SW

M-II/R SD, M-II/R EMG 02 03

BODY Alder
NECK Maple
FINGER BOARD Rosewood
CONSTRUCTION Bolt-on
SCALE 25.5"
TUNERS Gotoh
BRIDGE Original Floyd Rose
HARDWARE COLOR Black Nickel
FRET 22 / XJ
NECK PICKUP Seymour Duncan SH-1n/EMG 81
BRIDGE PICKUP Seymour Duncan TB-4/EMG 81
CONTROL 1 Volume, 3way toggle switch
COLOR BK



M-II Neck-Thru 06

BODY Alder
NECK Maple 3P
FINGER BOARD Rosewood
CONSTRUCTION Neck-thru-body
SCALE 25.5"
TUNERS Gotoh
BRIDGE Original Floyd Rose
HARDWARE COLOR Black Nickel
FRET 24 / XJ
NECK PICKUP EMG81
BRIDGE PICKUP EMG81
CONTROL 1 Volume, 3way toggle switch
COLOR BK



M-II Thru Urban 08

BODY Alder
NECK Maple 3P
FINGER BOARD Ebony w/ White Binding
CONSTRUCTION Neck-thru-body
SCALE 25.5"
TUNERS Gotoh
BRIDGE Original Floyd Rose
HARDWARE COLOR Black Nickel
FRET 24 / XJ
NECK PICKUP EMG81
BRIDGE PICKUP EMG81
CONTROL 1 Volume, 3way toggle switch
COLOR Urban Camo



M-I Neck-Thru 07

BODY Alder
NECK Maple 3P
FINGER BOARD Ebony
CONSTRUCTION Neck-thru-body
SCALE 25.5"
TUNERS Gotoh
BRIDGE Original Floyd Rose
HARDWARE COLOR Black Nickel
FRET 24 / XJ
NECK PICKUP EMG81
BRIDGE PICKUP EMG81
CONTROL 1 Volume, 3way toggle switch
COLOR BK



M-II/M SD SW 09

BODY Alder
NECK Maple
FINGER BOARD Ebony
CONSTRUCTION Bolt-on
SCALE 25.5"
TUNERS Gotoh
BRIDGE Original Floyd Rose
HARDWARE COLOR Black Nickel
FRET 22 / XJ
NECK PICKUP Seymour Duncan SH-1n
BRIDGE PICKUP Seymour Duncan TB-4
CONTROL 1 Volume, 3way toggle switch
COLOR SW



ESP
Standard Series
M-series



Viper 10

BODY Mahogany
NECK Mahogany with White Binding
FINGER BOARD Ebony
CONSTRUCTION Set-neck
SCALE 24.75"
TUNERS Gotoh Magnum Lock
BRIDGE Gotoh Tune-Matic
HARDWARE COLOR Black Nickel
FRET 24 / XJ
NECK PICKUP EMG85
BRIDGE PICKUP EMG81
CONTROL 1 Volume, 1 Tone, 3-way toggle switch
COLOR BK3, Campo, Urban Camo



11



12



Viper 7

BODY Mahogany
NECK Mahogany with White Binding
FINGER BOARD Ebony w/ Pina Inlays
CONSTRUCTION Set-neck
SCALE 24.75"
TUNERS Gotoh Magnum Lock
BRIDGE Tonecraft Tune-Matic 7 String
HARDWARE COLOR Black Nickel
FRET 24 / XJ
NECK PICKUP EMG81
BRIDGE PICKUP EMG85
CONTROL 1 Volume, 3-way toggle switch
COLOR BK3

13



14

Viper Baritone
BK3

Viper Baritone

BODY Mahogany
NECK Mahogany with White Binding
FINGER BOARD Ebony
CONSTRUCTION Set-neck
SCALE 27"
TUNERS Gotoh Magnum Lock
BRIDGE Gotoh Tune-Matic
HARDWARE COLOR Black Nickel
FRET 24 / XJ
NECK PICKUP EMG85
BRIDGE PICKUP EMG81
CONTROL 1 Volume, 1 Tone, 3-way toggle switch
TUNED B1 (B2), C1 (C2), A1 (A2),
 F1 (F2), D1 (D2), G1 (G2)
COLOR BK3



Vintage Plus/R Distressed 02

BODY Alder
NECK Maple
FINGER BOARD Rosewood
CONSTRUCTION Bolt-on
SCALE 25.5"
TUNERS Gotoh Magnum Lock
BRIDGE Wilkinson Vintage
HARDWARE COLOR Chrome
FRET 22 JXJ
NECK PICKUP Seymour Duncan SSL-1
MIDDLE PICKUP Seymour Duncan SSL-1
BRIDGE PICKUP Seymour Duncan SSL-1
CONTROL 1 Volume, 2 Tone,
Swasy 3-ported switch
COLOR 3TS, OW

02
Vintage Plus/R
Distressed
3TS



Distressed Fingerboard



Distressed Body

01
Vintage Plus/R
Distressed
OW

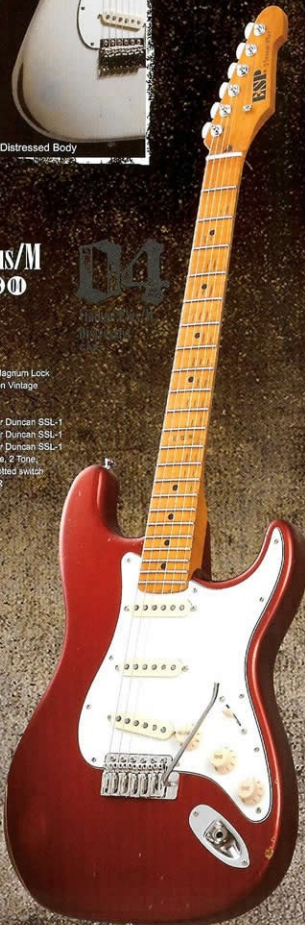


03
Vintage Plus/M
Distressed
BK, CAR

Vintage Plus/M Distressed 03

BODY Alder
NECK Maple
FINGER BOARD Maple
CONSTRUCTION Bolt-on
SCALE 25.5"
TUNERS Gotoh Magnum Lock
BRIDGE Wilkinson Vintage
HARDWARE COLOR Chrome
FRET 22 JxJ
NECK PICKUP Seymour Duncan SSL-1
MIDDLE PICKUP Seymour Duncan SSL-1
BRIDGE PICKUP Seymour Duncan SSL-1
CONTROL 1 Volume, 2 Tone,
Swasy 3-ported switch
COLOR BK, CAR

04
Vintage Plus/R
Distressed
3TS



ESP
Standard Series:
Vintage-series



Vintage-4 P/J/M 05 06

BODY: Alder
NECK: Maple
FINGER BOARD: Maple
CONSTRUCTION: Bolt-On
SCALE: 34"
TUNERS: Grob
BRIDGE: ESP Custom Bass Bridge
HARDWARE COLOR: Chrome
FRET: 21 / J
NECK PICKUP: Seymour Duncan S-PB-2
BRIDGE PICKUP: Seymour Duncan S-B-2b
CONTROL: 2 Volume, 1 Tone
COLOR: Distressed BK, Distressed OW

ESP

Standard Series: **Vintage-series**



Vintage-4 P/J/R 07 08

BODY: Alder
NECK: Maple
FINGER BOARD: Rosewood
CONSTRUCTION: Bolt-On
SCALE: 34"
TUNERS: Grob
BRIDGE: ESP Custom Bass Bridge
HARDWARE COLOR: Chrome
FRET: 21 / J
NECK PICKUP: Seymour Duncan S-PB-2
BRIDGE PICKUP: Seymour Duncan S-B-2b
CONTROL: 2 Volume, 1 Tone
COLOR: Distressed STB, Distressed PMM



BTL-STD 01

BODY Alder
NECK Maple 3P
FINGER BOARD Ebony
CONSTRUCTION Neck-thru-body
SCALE 34"
TUNERS Gotoh
BRIDGE Gotoh JS103J-4
HARDWARE COLOR Black Nickel
FRET 24 J
NECK PICKUP Seymour Duncan SSB-4n
BRIDGE PICKUP Seymour Duncan SSB-4b
CONTROL ESP Active "CINNAMON"
 1Vol, Balance, 3-band EQ With Battery Box
COLOR BK

01
BTL-STD



Forest B 02

BODY Alder
NECK Maple 3P
FINGER BOARD Ebony
CONSTRUCTION Neck-thru-body
SCALE 34"
TUNERS Gotoh
BRIDGE ESP BB-1
HARDWARE COLOR Black Nickel
FRET 24 J
NECK PICKUP EMG 35J
BRIDGE PICKUP EMG 35J
CONTROL 2 Volume, Treble, Bass, Battery box
COLOR BK

02
Forest B



BTL-STD 5 03

BODY Alder
NECK Maple 3P
FINGER BOARD Ebony
CONSTRUCTION Neck-thru-body
SCALE 34"
TUNERS Gotoh
BRIDGE Gotoh JS103J-5
HARDWARE COLOR Black Nickel
FRET 24 J
NECK PICKUP Seymour Duncan SSB-4n
BRIDGE PICKUP Seymour Duncan SSB-5b
CONTROL ESP Active "CINNAMON"
 1Vol, Balance, 3-band EQ With Battery Box
COLOR BK

03
BTL-STD 5

Viper B 04

BODY Mahogany
NECK Maple 3P with White Binding
FINGER BOARD Rosewood
CONSTRUCTION Neck-thru-body
SCALE 34"
TUNERS Gotoh
BRIDGE VIBO-4
HARDWARE COLOR Black Nickel
FRET 24 J
NECK PICKUP EMG 85B
BRIDGE PICKUP EMG 35J
CONTROL 2 Volume, Treble, Bass, Battery Box
COLOR BK

04
Viper B



ESP

Standard Series:



Btl, Forest B, Viper B



AM-J/R

BODY Alder
NECK Maple
FINGER BOARD Rosewood
CONSTRUCTION Bolt-on
SCALE 34"
TUNERS Gotoh
BRIDGE ESP Custom Bass Bridge
HARDWARE COLOR Chrome
FRET 21 J
NECK PICKUP Seymour Duncan SJB-2n
BRIDGE PICKUP Seymour Duncan SJB-2b
CONTROL 2 Volume, Treble, Bass
COLOR BK, CARLPS



AM-J/M

BODY Ash
NECK Maple
FINGER BOARD Maple
CONSTRUCTION Bolt-on
SCALE 34"
TUNERS Gotoh
BRIDGE ESP Custom Bass Bridge
HARDWARE COLOR Chrome
FRET 21 J
NECK PICKUP Seymour Duncan SJB-2n
BRIDGE PICKUP Seymour Duncan SJB-2b
CONTROL 2 Volume, Treble, Bass
COLOR N

ESP

Standard Series:
Am. Surveyor

Surveyor-5 BK

BODY Ash
NECK Maple
FINGER BOARD Ebony
CONSTRUCTION Bolt-on
SCALE 34"
TUNERS Gotoh
BRIDGE Wilkinson WB50-5
HARDWARE COLOR Chrome
FRET 21 J
NECK PICKUP EMG 40P-5
BRIDGE PICKUP EMG MMTW-5
CONTROL Volume, Balance, Dual / Single Coil Mini Switch, 8-30 Rev-5 EQ, Battery box
COLOR BK



Surveyor-II N

BODY Ash
NECK Maple
FINGER BOARD Maple
CONSTRUCTION Bolt-on
SCALE 34"
TUNERS Gotoh
BRIDGE Wilkinson WB50-4
HARDWARE COLOR Chrome
FRET 21 J
NECK PICKUP EMG 35-F4
BRIDGE PICKUP EMG MMTW
CONTROL Volume, Balance, Dual / Single Coil Mini Switch, 8-30 Rev-5 EQ, Battery box
COLOR N



Surveyor-II BK



Surveyor-5 N

BODY Ash
NECK Maple
FINGER BOARD Maple
CONSTRUCTION Bolt-on
SCALE 34"
TUNERS Gotoh
BRIDGE Wilkinson WB50-4
HARDWARE COLOR Chrome
FRET 21 J
NECK PICKUP EMG 40P-5
BRIDGE PICKUP EMG MMTW-5
CONTROL Volume, Balance, Dual / Single Coil Mini Switch, 8-30 Rev-5 EQ, Battery box
COLOR N

Surveyor-II BK

BODY Ash
NECK Maple
FINGER BOARD Maple
CONSTRUCTION Bolt-on
SCALE 34"
TUNERS Gotoh
BRIDGE Wilkinson WB50-4
HARDWARE COLOR Chrome
FRET 21 J
NECK PICKUP EMG 35-F4
BRIDGE PICKUP EMG MMTW
CONTROL Volume, Balance, Dual / Single Coil Mini Switch, 8-30 Rev-5 EQ, Battery box
COLOR N

07

Surveyor-II

09

Surveyor-5

08

Surveyor-II BK

ESP

Original Series Snapper

01

Snapper CTM
MAGENTA



02

Snapper CTM
AQUA MARINE



Snapper-ALR 00

BODY Alder
 NECK Maple
 FINGER BOARD Rosewood / Compound
 CONSTRUCTION Bolt-on
 SCALE 23.5"
 TUNERS Sperzel Locking Tuners
 BRIDGE ESP Flicker-II
 HARDWARE COLOR Chrome
 FRET 22 / XJ
 NECK PICKUP ESP Custom Lab CE-P-S-2
 MIDDLE PICKUP ESP Custom Lab CL-P-S-2
 BRIDGE PICKUP ESP Custom Lab CL-P-H-2
 CONTROL 1 Volume, 1 Tone, 5-way slotted switch, Bridge PU Direct Switch
 COLOR Black, Brass Blue, Brass Red

04

Snapper-ALR
BRASS BLUE



Snapper-ASM 05

BODY Alder
 NECK Maple
 FINGER BOARD Maple / Compound
 CONSTRUCTION Bolt-on
 SCALE 23.5"
 TUNERS Sperzel Locking Tuners
 BRIDGE ESP Flicker-III
 HARDWARE COLOR Chrome
 FRET 22 / 216A
 NECK PICKUP ESP Custom Lab CL-P-S-2
 MIDDLE PICKUP ESP Custom Lab CL-P-S-2
 BRIDGE PICKUP ESP Custom Lab CL-P-H-2
 CONTROL Master Volume, Master Tone, Flies Blenders, 5-way slotted switch
 COLOR Honey Blond, Aqua Marine, Burnt

05

Snapper-ASM
BURNED



03

Snapper CTM
TIGER EYE



Snapper CTM 01 02 03

BODY Basswood with Quilted Maple with Natural Binding
 NECK Maple
 FINGER BOARD Rosewood or Maple / Compound
 CONSTRUCTION Bolt-on
 SCALE 23.5"
 TUNERS Sperzel Locking Tuners
 BRIDGE ESP Flicker-III
 HARDWARE COLOR Chrome
 FRET 22 / XJ
 NECK PICKUP ESP Custom Lab CL-P-S-1
 MIDDLE PICKUP ESP Custom Lab CL-P-S-1
 BRIDGE PICKUP ESP Custom Lab CL-P-H-1
 CONTROL 1 Volume, 1 Tone, 5-way slotted switch, Bridge PU Direct Switch
 COLORS Aqua Marine, Magenta, Tiger Eye



Throbber 06 07 08 09

BODY Alder or Ash with Quilted Maple with Sound Chamber
NECK Maple
FINGER BOARD Rosewood or Maple / Compound
CONSTRUCTION Bolt-on
SCALE 25.5"
TUNERS Sperzel Locking Tuners
BRIDGE ESP Fixed Bridge
HARDWARE COLOR Chrome
FRET 22 / XJ
NECK PICKUP ESP Custom Lab CL-P-H-2n
BRIDGE PICKUP ESP Custom Lab CL-P-H-2b
CONTROL Master Volume, Master Tone, 5 way slotted switch
COLOR CASSIS, Deep Aqua, Olive

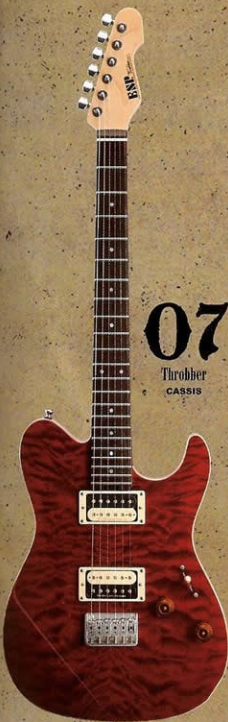
06

Throbber
DEEP AQUA



07

Throbber
CASSIS



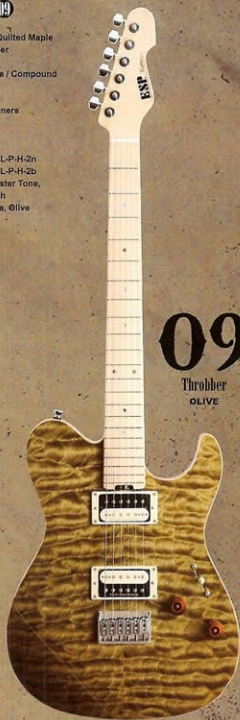
08

Throbber
DEEP AQUA



09

Throbber
OLIVE



Custom sound chamber in the center of the body

ESP Original Series Throbber

Brought to you by

musica
ESPUSA.COM



Original Series Potbelly



01

Potbelly
Amber Cherry Sunburst

Potbelly STD 03

BODY Honduras Mahogany / Hard Maple Top
NECK Honduras Mahogany
FINGER BOARD Rosewood
CONSTRUCTION Set-neck
SCALE 24.75"
TUNERS Gotoh
BRIDGE Tonepros Locking bridge
HARDWARE COLOR Chrome
FRET 22 / XJ
NECK PICKUP Seymour Duncan SH-1n
BRIDGE PICKUP Seymour Duncan SH-1b
CONTROL 3-way toggle switch
COLOR BRBL, ACSB, LD, JBBK



03

Potbelly STD
BRBL



DEEP JOINT

Neck is set in body deeper than regular set-neck for more strength and longer sustain.



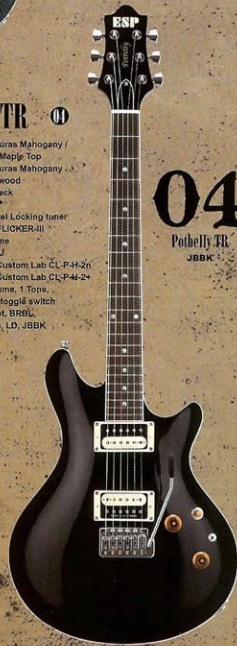
PICKGUARD

Potbelly TR 04

BODY Honduras Mahogany / Hard Maple Top
NECK Honduras Mahogany
FINGER BOARD Rosewood
CONSTRUCTION Set-neck
SCALE 24.75"
TUNERS Sperzel Locking tuner
BRIDGE ESP Flicker-III
HARDWARE COLOR Chrome
FRET 22 / XJ
NECK PICKUP ESP Custom Lab CL-P-H2n
BRIDGE PICKUP ESP Custom Lab CL-P-44-2
CONTROL 1 Volume, 1 Tone, 3-way toggle switch
COLOR Gantai, BRBL, ACSB, LD, JBBK

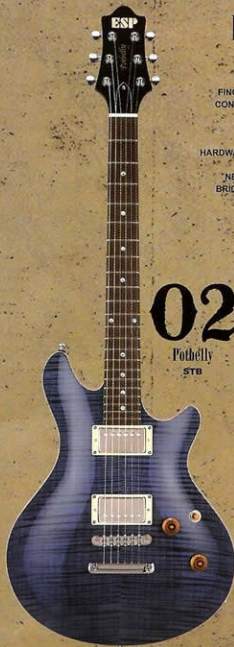
04

Potbelly TR
JBBK



02

Potbelly
STB



Potbelly 02

BODY Honduras Mahogany / Figured Maple Top
NECK Honduras Mahogany
FINGER BOARD Wenge
CONSTRUCTION Set-neck
SCALE 24.75"
TUNERS Gotoh
BRIDGE Tonepros Locking bridge
HARDWARE COLOR Chrome
FRET 22 / XJ
NECK PICKUP ESP Custom Lab CL-P-N-2
BRIDGE PICKUP ESP Custom Lab CL-P-H2
CONTROL 1 Volume, 1 Tone, 3-way toggle switch
COLOR ACSB, MCB, DBB, STB

Horizon-II NT 06

BODY Honduras Mahogany
NECK Maple 3P
FINGER BOARD Ebony
CONSTRUCTION Neck-thru-body
SCALE 25.5"
TUNERS GOTOH SG3366-07
BRIDGE GOTOH GE103B-T & GE101Z
HARDWARE COLOR Black Nickel
FRET 24 / XJ
NECK PICKUP Seymour Duncan SH-1n
BRIDGE PICKUP Seymour Duncan SH-14
CONTROL 1 Volume (with push-push Coil Split switch),
 3 Tone, 3-way toggle switch*
COLOR 2W.BK, HMBK



06

Horizon-II NT
HMBK

Horizon-I 07

BODY Alder
NECK Maple 3P with White Binding
FINGER BOARD Ebony
CONSTRUCTION Neck-thru-body
SCALE 25.5"
TUNERS Gotoh
BRIDGE Original Floyd Rose
CONSTRUCTION Black
HARDWARE COLOR 24 / XJ
FRET Seymour Duncan SHR-1n
BRIDGE PICKUP Seymour Duncan TB-6
CONTROL 1 Volume (with push-push Coil Split switch),
 1 Tone, 3-way toggle switch*
COLOR BK, Deep Candy Apple Red

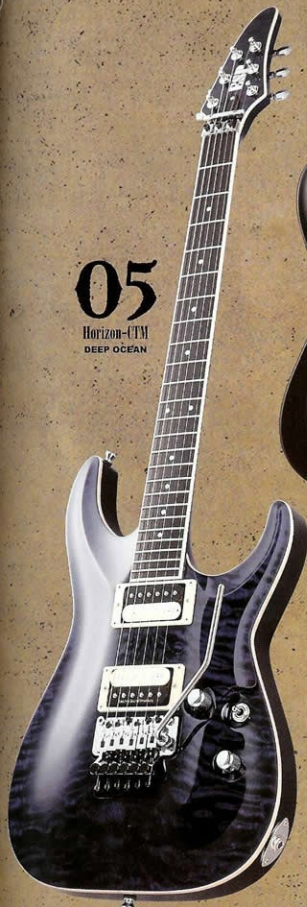


07

Horizon-I
DEEP CANDY APPLE RED

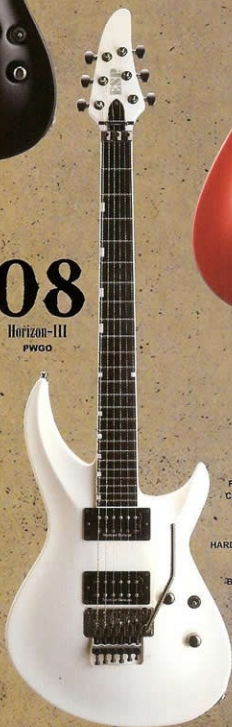
05

Horizon-CTM
DEEP OCEAN



08

Horizon-III
PWGD



Horizon-III 08

BODY Alder
NECK Maple 3P
FINGER BOARD Ebony
CONSTRUCTION Neck-thru-body
SCALE 25.5"
TUNERS Gotoh
BRIDGE Original Floyd Rose
HARDWARE COLOR Black Nickel
FRET 24 / XJ
NECK PICKUP Seymour Duncan SH-2n
BRIDGE PICKUP Seymour Duncan TB-4
CONTROL 1 Volume (with push-push Coil Split switch),
 1 Tone, 3-way toggle switch*
COLOR Mariner, Black,
 Pearl White Gold

Horizon CTM 05

BODY Mahogany / Quilted or Figured Maple Top
NECK Maple 3P with White Binding
FINGER BOARD Ebony
CONSTRUCTION Neck-thru-body
SCALE 25.5"
TUNERS Gotoh
BRIDGE Original Floyd Rose
HARDWARE COLOR Chrome
FRET 24 / XJ
NECK PICKUP ESP Custom Lab CL-FH-2n
BRIDGE PICKUP ESP Custom Lab CL-PH-2n
CONTROL 1 Volume, 1 Tone (with push-push, 3-way toggle switch),
 3-way toggle switch
COLOR Deep Ocean, Deep Ocean,
 Copper Brown

ESP Original Series Horizon

Brought to you by

music



Original Series Forest-GT, Forest-G, RS

Forest-GT 01 02 03

BODY Mahogany / Swamp Ash Top
NECK Maple 3P
FINGER BOARD Ebony
CONSTRUCTION Neck-thru-body
SCALE 25.5"
TUNERS Gotoh
BRIDGE Original Floyd Rose
HARDWARE COLOR Black Nickel
FRET 24 / XJ
NECK PICKUP Seymour Duncan SHR-1n
BRIDGE PICKUP Seymour Duncan TB-4
CONTROL 1 Volume (with push-push Coil Split switch),
1 Tone - 3way toggle switch
COLOR STW, STBK, STR, BK

01
Forest-GT
STW

03
Forest-GT
STBK

02
Forest-GT
STR

Forest-G 04

BODY Alder
NECK Maple 3P
FINGER BOARD Ebony
CONSTRUCTION Neck-thru-body
SCALE 25.5"
TUNERS Gotoh
BRIDGE Gotoh Tune-matic
HARDWARE COLOR Black Nickel
FRET 24 / XJ
NECK PICKUP EMG-60
BRIDGE PICKUP EMG-81
CONTROL 1 Volume, 1 Tone,
2way-toggle
COLOR BK

04
Forest-G

RS 05

BODY Alder
NECK Maple 3P
FINGER BOARD Rosewood or Maple
CONSTRUCTION Neck-thru-body
SCALE 25.5"
TUNERS Gotoh
BRIDGE Original Floyd Rose
HARDWARE COLOR Chrome
FRET 22 / XJ
NECK PICKUP Seymour Duncan SH-10n
BRIDGE PICKUP Seymour Duncan TB-10
CONTROL 1 Volume,
3way toggle switch
COLOR BK, VW, Silver

05
RS
SILVER



M-II CTM 06

BODY Alder
NECK Maple 3P
FINGER BOARD Ebony
CONSTRUCTION Neck-thru-body
SCALE 25.5"
TUNERS Gotoh
BRIDGE Original Floyd Rose
HARDWARE COLOR Black/Nickel
FRET 24 / XJ
NECK PICKUP EMG 85
BRIDGE PICKUP EMG 81
CONTROL 1 Volume, 1 Tone,
3way Slotted switch
COLOR BK

06

M-II CTM
BK



Viper SL 7 09

BODY Mahogany
NECK Maple
FINGER BOARD Rosewood
CONSTRUCTION Bolt-on
SCALE 27"
TUNERS Sperzel Locking Tuner
BRIDGE TonePros TP7 & String-Thru-Body
HARDWARE COLOR Black
FRET 24 / XJ
NECK PICKUP Seymour Duncan SH-1n-7
BRIDGE PICKUP Seymour Duncan SH-6-7
CONTROL 1 Volume, 1 Tone, 3way toggle switch
TB(.056), 6E(.046), 5A(.036), 4D(.026),
3G(.017), 2B(.013), 1E(0.10)
TUNED Half Mat Black, Half Mat Cherry,
Half Mat Green

09

Viper SL 7
HMBK



07

M-SEVEN
TITAN SILVER

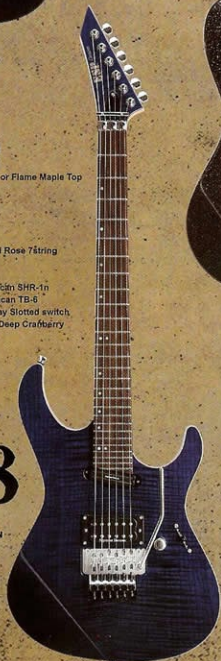


MV-CTM 08

BODY Alder/Quilted or Flame Maple Top
NECK Maple 3P
FINGER BOARD Rosewood
CONSTRUCTION Bolt-on
SCALE 24.75"
TUNERS Gotoh
BRIDGE Original Floyd Rose 7string
HARDWARE COLOR Chrome
FRET 27 / XJ
NECK PICKUP Seymour Duncan SHR-1n
BRIDGE PICKUP Seymour Duncan TB-9
CONTROL 1 Volume, 3way Slotted switch,
COLOR Deep Ocean, Deep Craft/airy

08

MV
DEEP OCEAN



10

Viper Baritone
HMBK



M-SEVEN 07

BODY Alder
NECK Maple 3P
FINGER BOARD Rosewood or Maple
CONSTRUCTION Bolt-on
SCALE 26.25"
TUNERS Gotoh
BRIDGE Original Floyd Rose 7string
HARDWARE COLOR Chrome
FRET 24 / XJ
NECK PICKUP Seymour Duncan SH-1n-7
BRIDGE PICKUP Seymour Duncan SH-5-7
CONTROL 1 Volume, 1 Tone, 3way Slotted switch
COLOR Black, Titan Silver

Viper Baritone 10

BODY Mahogany
NECK Maple
FINGER BOARD Rosewood
CONSTRUCTION Bolt-on
SCALE 27"
TUNERS Sperzel Locking Tuner
BRIDGE Gotoh Tune-matic
HARDWARE COLOR Black
FRET 24 / XJ
NECK PICKUP Seymour Duncan SH-1n-7
BRIDGE PICKUP Seymour Duncan SH-6-7
CONTROL 1 Volume, 1 Tone,
3way toggle switch
TUNED 6B(.054), 5E(.042), 4A(.032),
3D(.024), 2F(.016), 1B(.011)
COLOR HMBK

ESP

Original Series M-II, MV, Viper

Brought to you by

music



Original Series Amaze

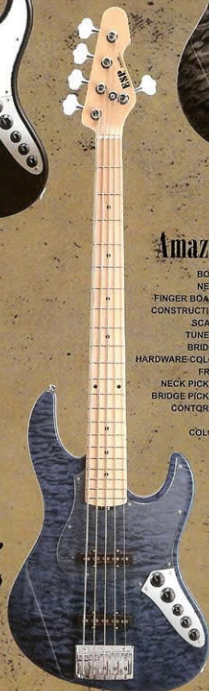
01
Amaze-SL5
BK



Amaze-SL5 01 02

BODY Swamp Ash
NECK Maple
FINGER BOARD Maple or Rosewood
CONSTRUCTION Bolt-on
SCALE 35"
TUNERS Gotoh
BRIDGE Hipshot Style "A"
HARDWARE COLOR Chrome
FRET 21 / #213
NECK PICKUP ESP Custom Lab CL-P-J5-1n
BRIDGE PICKUP ESP Custom Lab CL-P-J5-1b
CONTROL Master Volume (w/ EQ Bypass Switch),
Balancer, 3 Band EQ (ESP Cinnamon)
COLOR BK, N

02
Amaze-SL5
N



05
Amaze CTM 5
STD



Amaze CTM 03 04

BODY Swamp Ash / Quilted Maple Top
NECK Maple
FINGER BOARD Maple or Rosewood
CONSTRUCTION Bolt-on
SCALE 34"
TUNERS Gotoh
BRIDGE Hipshot Style "A"
HARDWARE COLOR Chrome
FRET 21 / #213
NECK PICKUP ESP Custom Lab CL-P-J4-1n
BRIDGE PICKUP ESP Custom Lab CL-P-J4-1b
CONTROL Master Volume (w/ EQ Bypass Switch),
Balancer, 3 Band EQ (ESP Cinnamon)
COLOR STK, AMB, STD, STR

03
Amaze CTM
STK



04
Amaze CTM
AMB



Amaze CTM 5 01 02

BODY Swamp Ash / Quilted Maple Top
NECK Maple
FINGER BOARD Maple or Rosewood
CONSTRUCTION Bolt-on
SCALE 35"
TUNERS Gotoh
BRIDGE Hipshot Style "A"
HARDWARE COLOR Chrome
FRET 21 / #213
NECK PICKUP ESP Custom Lab CL-P-J5-1n
BRIDGE PICKUP ESP Custom Lab CL-P-J5-1b
CONTROL Master Volume (w/ EQ Bypass Switch),
Balancer, 3 Band EQ (ESP Cinnamon)
COLOR STK, AMB, STD, STR



06
Amaze CTM 5
STK

07VP-B
Blue Bronze**VP-B 07 08**

BODY Mahogany
NECK Maple 3P
FINGER BOARD Rosewood w/ White Binding
CONSTRUCTION Bolt-on
SCALE 34"
TUNERS Gotoh GB-707E
BRIDGE Hipshot Style "A"
HARDWARE COLOR Chrome
FRET 21 / XJ
NECK PICKUP Seymour Duncan SSB-4rt
BRIDGE PICKUP Seymour Duncan SSB-4b
CONTROL Master Volume(w/ EQ Thru Switch),
 Toggle P/L Selector,
 Treble & Bass(ESP CINNAMON Boost Wiring)
COLOR BK, WH, Blue Bronze, Dark Cherry

09

Halibut Wenge Top

Halibut Wenge Top 09

BODY Wenge top & Back / Alder Middle
NECK Maple / Walnut, Paduk, 7P
FINGER BOARD Wenge
CONSTRUCTION Bolt-on
SCALE 35"
TUNERS Hipshot Ultralite
BRIDGE Hipshot Style "A"
HARDWARE COLOR Black
FRET 24F / 214H
NECK PICKUP Seymour Duncan Custom Shop Hum
BRIDGE PICKUP Seymour Duncan Custom Shop Hum
CONTROL 2 Volume, 3 Band EQ(Halibut original),
 Tap switch, EQ Bypass Switch
COLOR Matt Lacquer Fin

10Halibut
Spotted Maple Top**Halibut
Spotted Maple Top 10**

BODY Alder / Spotted Maple Top
NECK Maple / Walnut, Paduk, 7P
FINGER BOARD Wenge
CONSTRUCTION Bolt-on
SCALE 35"
TUNERS Hipshot Ultralite
BRIDGE Hipshot Style "A"
HARDWARE COLOR Black
FRET 24F / 214H
NECK PICKUP Seymour Duncan Custom Shop Hum
BRIDGE PICKUP Seymour Duncan Custom Shop Hum
CONTROL 2 Volume, 3 Band EQ(Halibut original),
 Tap switch, EQ Bypass Switch
COLOR Matt Lacquer Fin

11Halibut
Swamp Ash**Halibut Swamp Ash 11**

BODY Swamp Ash
NECK Maple / Walnut, Paduk, 7P
FINGER BOARD Maple
CONSTRUCTION Bolt-on
SCALE 35"
TUNERS Hipshot Ultralite
BRIDGE Hipshot Style "A"
HARDWARE COLOR Chrome
FRET 24F / 214H
NECK PICKUP Seymour Duncan Custom Shop Hum
BRIDGE PICKUP Seymour Duncan Custom Shop Hum
CONTROL 2 Volume, 3 Band EQ(Halibut original),
 Tap switch, EQ Bypass Switch
COLOR Matt Lacquer Fin

08VP-B
WH

ESP Original Series
 VP-B, Halibut



Kirk Hammett
METALLICA

My ESP guitars that are now 20 years old are like fine wine - they are getting better and better!! My guitars still stay in tune, the sound ages gracefully year by year, and are holding up on stages all over the world!!

- Kirk Hammett - Metallica



KH-2 Vintage

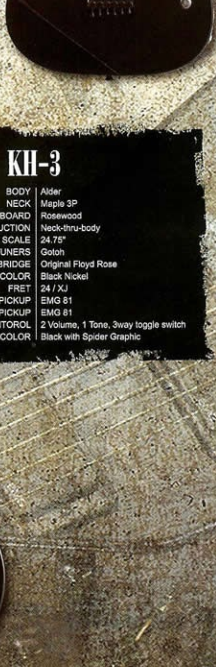
| | |
|----------------|--|
| BODY | Alder |
| NECK | Maple 3P |
| FINGER BOARD | Rosewood |
| CONSTRUCTION | Neck-thru-body |
| SCALE | 25.5" |
| TUNERS | Gothon |
| BRIDGE | Original Floyd Rose |
| HARDWARE COLOR | Black Nickel |
| FRET | 24 / XJ |
| NECK PICKUP | EMG 81 |
| BRIDGE PICKUP | EMG 81 |
| CONTROL COLOR | 2 Volume, 1 Tone, 3-way slotted switch |
| COLOR | Distressed BK |

KH-2 Neck-Thru STD

| | |
|----------------|---------------------------------------|
| BODY | Alder |
| NECK | Maple 3P |
| FINGER BOARD | Rosewood |
| CONSTRUCTION | Neck-thru-body |
| SCALE | 25.5" |
| TUNERS | Gotoh |
| BRIDGE | Original Floyd Rose |
| HARDWARE COLOR | Black Nickel |
| FRET | 24 / XJ |
| NECK PICKUP | EMG 81 |
| BRIDGE PICKUP | EMG 81 |
| CONTROL | 2 Volume, 1 Tone, 3way slotted switch |
| COLOR | Black |

KH-2 Neck-Thru Custom Shop

| | |
|----------------|---------------------------------------|
| BODY | Alder |
| NECK | Maple 3P |
| FINGER BOARD | Rosewood |
| CONSTRUCTION | Neck-thru-body |
| SCALE | 25.5" |
| TUNERS | Gotoh |
| BRIDGE | Original Floyd Rose |
| HARDWARE COLOR | Black Nickel |
| FRET | 24 / XJ |
| NECK PICKUP | EMG 81 |
| BRIDGE PICKUP | EMG 81 |
| CONTROL | 2 Volume, 1 Tone, 3way slotted switch |
| COLOR | Black |



KH-3

| | |
|----------------|--------------------------------------|
| BODY | Alder |
| NECK | Maple 3P |
| FINGER BOARD | Rosewood |
| CONSTRUCTION | Neck-thru-body |
| SCALE | 24.75" |
| TUNERS | Gotoh |
| BRIDGE | Original Floyd Rose |
| HARDWARE COLOR | Black Nickel |
| FRET | 24 / XJ |
| NECK PICKUP | EMG 81 |
| BRIDGE PICKUP | EMG 81 |
| CONTROL | 2 Volume, 1 Tone, 3way toggle switch |
| COLOR | Black with Spider Graphic |

KH-3 Neck-Thru Custom Shop

| | |
|----------------|--------------------------------------|
| BODY | Alder |
| NECK | Maple 3P |
| FINGER BOARD | Rosewood |
| CONSTRUCTION | Neck-thru-body |
| SCALE | 24.75" |
| TUNERS | Gotoh |
| BRIDGE | Original Floyd Rose |
| HARDWARE COLOR | Black Nickel |
| FRET | 24 / XJ |
| NECK PICKUP | EMG 81 |
| BRIDGE PICKUP | EMG 81 |
| CONTROL | 2 Volume, 1 Tone, 3way toggle switch |
| COLOR | Black with Spider Graphic |



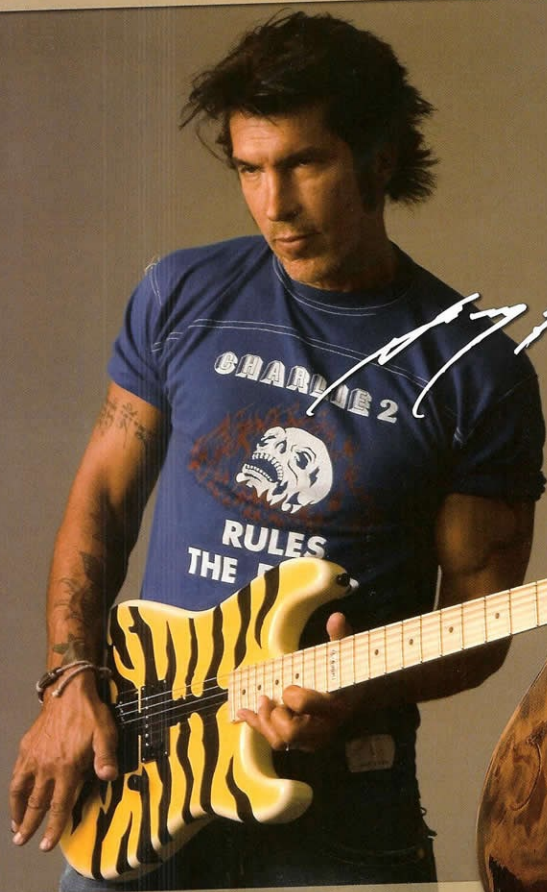
CRUISING
HOT

ESP Signature Series

straight to you by

music

ESP Signature Series | Kirk Hammett | 027



George Lynch

Twenty years ago, I found the guitar that fit everything I'd ever wanted to accomplish as a guitarist; the tone, looks, and feel of an ESP are what has defined rock as we know it today. Here I am, twenty years later, and still loving ESP. Does that tell you anything?

— George Lynch

GL-56 "Ten Years After"

| | |
|----------------|--|
| BODY | Alder |
| NECK | Maple |
| FINGER BOARD | Maple |
| CONSTRUCTION | Bolt-on |
| SCALE | 25.5" |
| TUNERS | Sperzel Locking Tuner |
| BRIDGE | Goich vintage |
| HARDWARE COLOR | Satin Chrome & Nickel |
| FRET | 22 / XJ |
| NECK PICKUP | ESP SS-120 |
| MIDDLE PICKUP | ESP SS-120 |
| BRIDGE PICKUP | Seymour Duncan SH-P01 |
| CONTROL | 1 Volume, 2 Tone, 5-way slotted switch |
| COLOR | Distressed 2TS |

Sunburst Tiger

BODY Maple
NECK Maple
FINGER BOARD Rosewood
CONSTRUCTION Bolt-on
SCALE 25.5"
TUNERS Gotoh
HARDWARE COLOR Black Nickel
FRET 22 / XJ
NECK PICKUP ESP SS-120
BRIDGE PICKUP Seymour Duncan TB-12
CONTROL 1 Volume with push-pull PU Select switch
COLOR Sunburst Tiger Graphic

M-1 Tiger

BODY Maple
NECK Maple
FINGER BOARD Maple
CONSTRUCTION Bolt-on
SCALE 25.5"
TUNERS Gotoh
BRIDGE Original Floyd Rose
HARDWARE COLOR Black Nickel
FRET 22 / XJ
BRIDGE PICKUP Seymour Duncan TB-12
CONTROL 1 Volume with push-pull PU Select switch
COLOR Yellow Tiger Graphic

Super V SE

BODY Mahogany
NECK Maple 5P
FINGER BOARD Rosewood
CONSTRUCTION Set-neck
SCALE 24.75"
TUNERS Gotoh
BRIDGE Original Floyd Rose
HARDWARE COLOR Chrome
FRET 24 / XJ
NECK PICKUP Seymour Duncan SPH-90m
BRIDGE PICKUP Seymour Duncan TB-14
CONTROL 1 Volume, 3-way toggle switch, Momentary On/Off switch
COLOR BK w/ Silver Stripes

Kamikaze-1

BODY Maple
NECK Maple
FINGER BOARD Ebony
CONSTRUCTION Bolt-on
SCALE 25.5"
TUNERS Gotoh
BRIDGE Original Floyd Rose
HARDWARE COLOR Black Nickel
FRET 22 / XJ
NECK PICKUP ESP SS-120
BRIDGE PICKUP Seymour Duncan TB-12
CONTROL 1 Volume with push-pull PU Select switch
COLOR Kamikaze Graphic

Skulls & Snakes

BODY Alder
NECK Maple
FINGER BOARD Rosewood
CONSTRUCTION Bolt-on
SCALE 25.5"
TUNERS Gotoh
BRIDGE Original Floyd Rose
HARDWARE COLOR Black Nickel
FRET 22 / XJ
NECK PICKUP ESP SS-120
BRIDGE PICKUP Seymour Duncan TB-12
CONTROL 1 Volume with push-pull PU Select switch
COLOR Skulls & Snakes Graphic

ESP Signature Series



Alexi Saw Tooth Custom Shop

BODY Alder
NECK Maple 3P
FINGER BOARD Ebony w/ Luminous Saw Tooth Inlay
CONSTRUCTION Neck-thru-body
SCALE 25.5"
TUNERS Gotoh
BRIDGE Original Floyd Ross
HARDWARE COLOR Chrome, Gold
FRET 24 / XJ
BRIDGE PICKUP Seymour Duncan AHB-1 Blackouts
CONTROL Master Volume, MM-04 w/on-off Switch
COLOR Black w/ Luminous Pin Stripes

Alexi Laiho

CHILDREN OF BODOM

Alexi Saw Tooth STD

BODY Alder
NECK Maple 3P
FINGER BOARD Ebony w/ Luminous Saw Tooth Inlay
CONSTRUCTION Neck-thru-body
SCALE 25.5"
TUNERS Gotoh
BRIDGE Original Floyd Ross
HARDWARE COLOR Chrome, Gold
FRET 24 / XJ
BRIDGE PICKUP EMG H2-H2
CONTROL Master Volume, MM-04 w/on-off Switch
COLOR Black w/ Luminous Pin Stripes



Alexi Pink Saw Tooth Custom Shop

BODY Alder
NECK Maple 3P
FINGER BOARD Ebony w/ Pink Saw Tooth Inlay
CONSTRUCTION Neck-thru-body
SCALE 25.5"
TUNERS Gotoh
BRIDGE Original Floyd Ross
HARDWARE COLOR Black/Nickel
FRET 24 / XJ
BRIDGE PICKUP Seymour Duncan AHB-1 Blackouts
CONTROL Master Volume, MM-04 w/on-off Switch
COLOR Black w/Pink Pin Stripes & "COBHC" Logo



MM-04 is a preamp booster which was specially designed for Alexi Laiho. According to his requirement on seeking of the "heaviest sound", and now it's available for all the guitar players as a regular production by joint development of ESP and the ESP Finnish distributor, "Musamaailma". 4 frequency pre-set switches and a trimmer pot allow you to get any sound character you need.

ESP just f-king rocks. You're not going to find a better guitar for heavy music, anywhere at any price.

- Alexi Laiho

Authorized by

Alexi Scythe STD

BODY Alder
NECK Maple 3P
FINGER BOARD Ebony w/ Scythe Inlay
CONSTRUCTION Neck-thru-body
SCALE 25.5"
TUNERS Gotoh
BRIDGE Original Floyd Rose
HARDWARE COLOR Chrome
FRET 24 / XJ
BRIDGE PICKUP EMG HZ-H2
CONTROL Master Volume,
MM-04 w/on-off Switch
COLOR White w/ Black Pin Stripes

Alexi Pink Saw Tooth STD

BODY Alder
NECK Maple 3P
FINGER BOARD Ebony w/ Pink Saw Tooth Inlay
CONSTRUCTION Neck-thru-body
SCALE 25.5"
TUNERS Gotoh
BRIDGE Original Floyd Rose
HARDWARE COLOR Black Nickel
FRET 24 / XJ
BRIDGE PICKUP EMG HZ-H2
CONTROL Master Volume,
MM-04 w/on-off Switch
COLOR Black w/ Pink Pin Stripes
& "OOBHC" Logo

Alexi Arrow Head Custom Shop

BODY Alder
NECK Maple 3P
FINGER BOARD Ebony
CONSTRUCTION Neck-thru-body
SCALE 25.5"
TUNERS Gotoh
BRIDGE Original Floyd Rose
HARDWARE COLOR Chrome, Gold
FRET 24 / XJ
BRIDGE PICKUP Seymour Duncan AHB-1 Blackouts
CONTROL Master Volume,
MM-04 w/on-off Switch
COLOR Black w/ Yellow Stripes

USA Alexi Laiho STD

BODY Alder
NECK Maple 3P
FINGER BOARD Ebony w/ Paroid Saw Tooth Inlay
CONSTRUCTION Neck-thru-body
SCALE 25.5"
TUNERS Gotoh
BRIDGE Original Floyd Rose
HARDWARE COLOR Black Nickel
FRET 24 / XJ
BRIDGE PICKUP Seymour Duncan AHB-1 Blackouts
CONTROL Master Volume
COLOR BK w/ Yellow Stripes
or WH w/ BK Stripes

Alexi Scythe Custom Shop

BODY Alder
NECK Maple 3P
FINGER BOARD Ebony w/ Scythe Inlay
CONSTRUCTION Neck-thru-body
SCALE 25.5"
TUNERS Gotoh
BRIDGE Original Floyd Rose
HARDWARE COLOR Chrome
FRET 24 / XJ
BRIDGE PICKUP Seymour Duncan AHB-1 Blackouts
CONTROL Master Volume,
MM-04 w/on-off Switch
COLOR White w/ Black Pin Stripes

ESP Signature Series

Photo: Jeff Yeager



James Hetfield

METALLICA

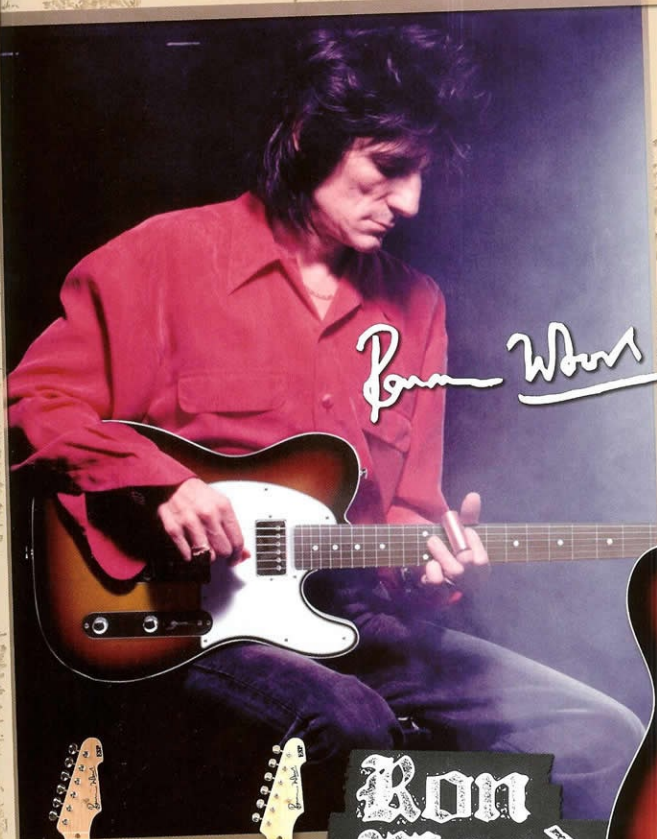
I Love the classic single cutaway shape along with the sound. I'm also obsessed with old cars, so combining the paint with an old primered ranch truck with the ESP Eclipse shape made sense

- James Hetfield - Metallica



Truckster

| | |
|----------------|--|
| BODY | Mahogany w/ Maple Top |
| NECK | Mahogany |
| FINGER BOARD | Rosewood |
| CONSTRUCTION | Sellback |
| SCALE | 24.75" |
| TUNERS | Sperzel Locking Tuner |
| BRIDGE | Tonepros Locking bridge |
| HARDWARE COLOR | Chrome |
| FRET | 22 / X1 |
| NECK PICKUP | EMG 60 |
| BRIDGE PICKUP | EMG 81 |
| CONTROL | 2 Vol, 1 Tone, 3way Toggle Switch (toggle in upper position is inactive) |
| COLOR | Aged Primer Grey |



Ron Wood

Ron Wood

- BODY Alder
- NECK Maple
- FINGER BOARD Maple / Rosewood on 3TS
- CONSTRUCTION Bolt-on
- SCALE 25.5"
- TUNERS Gotoh
- BRIDGE Flat mount string-thru-body
- HARDWARE COLOR Chrome
- FRET 22 / Medium
- NECK PICKUP ESP LH-200
- BRIDGE PICKUP ESP TS-120R
- CONTROL 1 Volume, 1 Tone, 3-way slotted switch
- COLOR BK, FR, 3TS



ESP Signature Series

Stephen Carpenter

DEFTONES



Stephen Carpenter STEF-7

BODY Alder
NECK Maple 3P
FINGER BOARD Ebony
CONSTRUCTION Neck-thru-body
SCALE 25.5"
TUNERS Gotoh
BRIDGE TonePros Locking Bridge w/ String-Thru Body
HARDWARE COLOR Chrome
SCALE 24 / XJ
FRET Chrome
NECK PICKUP EMG 81-7
BRIDGE PICKUP EMG 81-7
CONTROL 1 Volume, 1 Tone, 3way slotted switch
TUNED 7B(056), 6E(046), 5A(036), 4D(026), 3G(017), 2B(013), 1E(0.10)
COLOR STG



STEF-B8

BODY Alder
NECK Maple 3P w/ White Binding
FINGER BOARD Ebony
CONSTRUCTION Neck-thru-body
SCALE 27"
TUNERS Sperzel Locking Tuner
BRIDGE Hipnot bearing bridge
HARDWARE COLOR Black
SCALE 24 / XJ
FRET Chrome
NECK PICKUP EMG808
BRIDGE PICKUP EMG808
CONTROL 1 Volume, 1 Tone, 3way slotted switch
COLOR BK

Stephen Carpenter STEF-B7

BODY Alder
NECK Maple 3P
FINGER BOARD Ebony
CONSTRUCTION Neck-thru-body
SCALE 27"
TUNERS Gotoh
BRIDGE TonePros Locking Bridge w/ String-Thru Body
HARDWARE COLOR Chrome
SCALE 24 / XJ
FRET Chrome
NECK PICKUP EMG 81-7
BRIDGE PICKUP EMG 81-7
CONTROL 1 Volume, 1 Tone, 3way slotted switch
TUNED 7B(056), 6E(046), 5A(036), 4D(026), 3G(017), 2B(013), 1E(0.10)
COLOR BK



Stephen Carpenter STEF-T7

BODY Alder
NECK Maple 3P
FINGER BOARD Ebony
CONSTRUCTION Neck-thru-body
SCALE 27"
TUNERS Gotoh
BRIDGE TonePros Locking Bridge w/ String-Thru Body
HARDWARE COLOR Chrome
SCALE 24 / XJ
FRET Chrome
NECK PICKUP EMG 81-7
BRIDGE PICKUP EMG 81-7
CONTROL 1 Volume, 1 Tone, 3way slotted switch
TUNED 7B(056), 6E(046), 5A(036), 4D(026), 3G(017), 2B(013), 1E(0.10)
COLOR BK





Handwritten signature of Jeff Hanneman

Jeff Hanneman Custom Shop

BODY Alder
NECK Maple 3P
FINGER BOARD Ebony with Eagle Inlay
CONSTRUCTION Neck-thru-body
SCALE 25.5"
TUNERS Gotoh
BRIDGE Kahler 2315
HARDWARE COLOR Black
FRET 24 / XJ
NECK PICKUP EMG 85
BRIDGE PICKUP EMG 81
CONTROL 1 Volume, 1 Tone, 3 way toggle switch, EMG SPC Control
COLOR BK, Urban Camo



Jeff Hanneman Custom Shop w/ Sword Inlay

BODY Alder
NECK Maple 3P
FINGER BOARD Ebony with H+Sword Inlay
CONSTRUCTION Neck-thru-body
SCALE 25.5"
TUNERS Gotoh
BRIDGE Kahler 2315
HARDWARE COLOR Black Nickel
FRET 24 / XJ
NECK PICKUP EMG 85
BRIDGE PICKUP EMG 81
CONTROL 1 Volume, 1 Tone, 3 way toggle switch, EMG SPC Control
COLOR BK, Urban Camo



Jeff Hanneman SLAYER

Jeff Hanneman JH-STD

BODY Alder
NECK Maple 3P
FINGER BOARD Ebony with Eagle Inlay
CONSTRUCTION Neck-thru-body
SCALE 25.5"
TUNERS Gotoh
BRIDGE Kahler 2315
HARDWARE COLOR Black
FRET 24 / XJ
NECK PICKUP EMG 85
BRIDGE PICKUP EMG 81
CONTROL 1 Volume, 1 Tone, 3 way toggle switch, EMG SPC Control
COLOR BK, Urban Camo



Handwritten signature of Tom Araya

Tom Araya

BODY Alder
NECK Maple 3P
FINGER BOARD Ebony w/ Pentagram Inlays, ARAYA@12F
CONSTRUCTION Neck-thru-body
SCALE 35"
TUNERS Gotoh
BRIDGE GOTOH 20684
HARDWARE COLOR Black
FRET 24 / XJ
NECK PICKUP EMG 35-DC
BRIDGE PICKUP EMG 35-DC
CONTROL 1 Volume, PU Balancer, 1 Tone
COLOR BK



Tom Araya SLAYER

ESP makes great f-ing guitars, or else I wouldn't be there

- Tom Araya - SLAYER

ESP Signature Series



**Michael Amott
NINJA-II FR**

BODY Mahogany with White Binding / Quilted Maple Top
NECK Mahogany with White Binding
FINGER BOARD Ebony
CONSTRUCTION Neck-thru-body
SCALE 24.75"
TUNERS Gotoh
BRIDGE Original Floyd Rose
HARDWARE COLOR Black Nickel
FRET 24 / XJ
NECK PICKUP Seymour Duncan SH-1n
BRIDGE PICKUP Seymour Duncan SH-4
CONTROL 2 Volume, 3way toggle switch
COLOR STR

**Michael Amott
NINJA-II NT**

BODY Mahogany with White Binding / Quilted Maple Top
NECK Mahogany with White Binding
FINGER BOARD Ebony
CONSTRUCTION Set-neck
SCALE 24.75"
TUNERS Special Locking Tuner
BRIDGE TonePros Locking bridge
HARDWARE COLOR Chrome
FRET 22 / XJ
NECK PICKUP Seymour Duncan SH-1n
BRIDGE PICKUP Seymour Duncan SH-4
CONTROL 2 Volume, 3way toggle switch
COLOR STBK

Michael Amott

**Michael Amott
ARCH ENEMY**

Michael Amott "Ninja"

BODY Mahogany
NECK Mahogany
FINGER BOARD Rosewood
CONSTRUCTION Set-neck
SCALE 24.75"
TUNERS Special Locking Tuner
BRIDGE Gotoh Tune-matic
HARDWARE COLOR Chrome
FRET 22 / XJ
NECK PICKUP Seymour Duncan SH-1n
BRIDGE PICKUP Seymour Duncan SH-4
CONTROL 2 Volume, 3way toggle switch
COLOR BK, WH

"It's pretty difficult making your own signature guitar, there are just so many details. When someone gives you a blank sheet of paper and says, 'Do whatever you want,' that's different from customizing an existing guitar. I wanted something that was just very metal"

- Michael Amott - ARCH ENEMY

Gus G.

FIREWIND

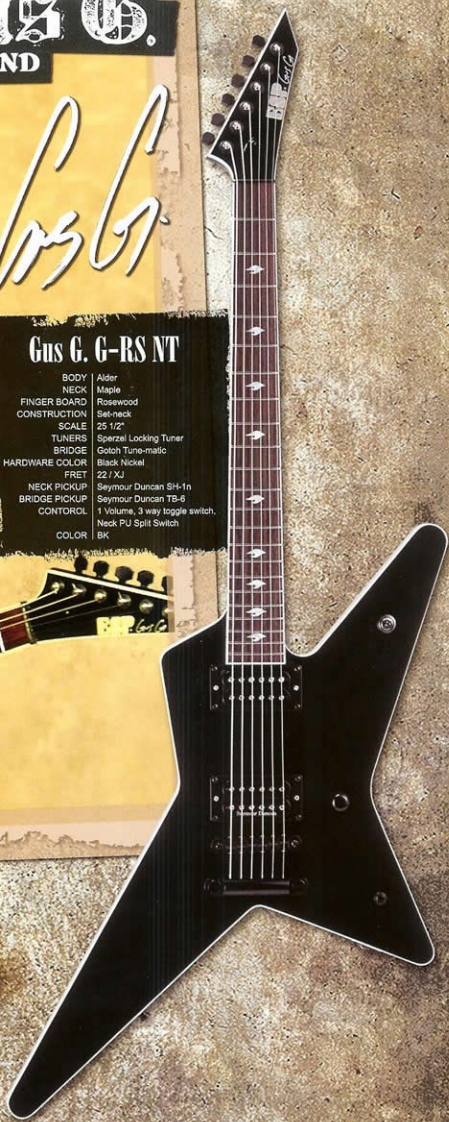
Gus G.

Gus G. G-RS NT

BODY Alder
 NECK Maple
 FINGER BOARD Rosewood
 CONSTRUCTION Set-neck
 SCALE 25 1/2"
 TUNERS Sperzel Locking Tuner
 BRIDGE Gotoh Tune-matic
 HARDWARE COLOR Black Nickel
 FRET 22 / XJ
 NECK PICKUP Seymour Duncan SH-1n
 BRIDGE PICKUP Seymour Duncan TB-6
 CONTROL 1 Volume, 3 way toggle switch,
 Neck PU Split Switch
 COLOR BK

Gus G. G-RS FR

BODY Alder w/ Flame Maple Top
 NECK Maple 3P
 FINGER BOARD Rosewood
 CONSTRUCTION Set-neck
 SCALE 25 1/2"
 TUNERS Sperzel Locking Tuner
 BRIDGE Original Floyd Rose
 HARDWARE COLOR Black
 FRET 22 / XJ
 NECK PICKUP Seymour Duncan SH-1n
 BRIDGE PICKUP Seymour Duncan TB-6
 CONTROL 1 Volume, 3 way toggle switch,
 Neck PU Split Switch
 COLOR STBC



ESP Signature Series

Will Adler
LAMB OF GOD

Will Adler Custom Shop

BODY Mahogany w/ Maple Top
NECK Mahogany
FINGER BOARD Rosewood w/ Stars Inlay, Flg @ 12F
CONSTRUCTION Neck-thru-body
SCALE 24.75"
TUNERS Sperzel Locking Tuner
BRIDGE TonePros Locking Bridge
HARDWARE COLOR Chrome
FRET 22 / XJ
NECK PICKUP Seymour Duncan SH-1n '59
BRIDGE PICKUP Seymour Duncan SH-4 JB
CONTROL 2 Volume, 1 Tone, Sway toggle switch
COLOR Camo Graphic

Will Adler STD

BODY Mahogany w/ Maple Top
NECK Mahogany
FINGER BOARD Rosewood w/ Stars Inlay, Flg @ 12F
CONSTRUCTION Neck-thru-body
SCALE 24.75"
TUNERS Sperzel Locking Tuner
BRIDGE TonePros Locking Bridge
HARDWARE COLOR Chrome
FRET 22 / XJ
NECK PICKUP Seymour Duncan SH-1n '59
BRIDGE PICKUP Seymour Duncan SH-4 JB
CONTROL 2 Volume, 1 Tone, Sway toggle switch
COLOR Camo Graphic

"My ESP felt so natural right when it came out of the box. From the first time I played it, this is the guitar that I've been waiting to have for years."

Will Adler - LAMB OF GOD



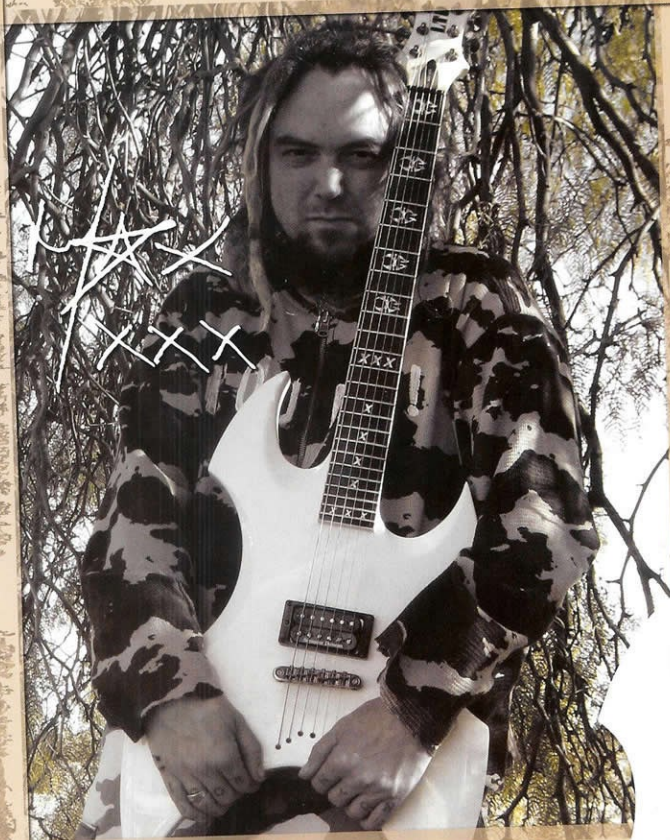
Jesper Stromblad

IN FLAMES

Jesper Stromblad

| | |
|----------------|----------------------------------|
| BODY | Mahogany |
| NECK | Maple, 9F |
| FRINGER BOARD | Rosewood w/ InFrames Logo Inlays |
| CONSTRUCTION | Neck-thru-body |
| SCALE | 24.75" |
| TUNERS | Special Locking Tuner |
| BRIDGE | TonePros Locking Bridge |
| HARDWARE COLOR | Black Nickel |
| FRET | 22 / XJ |
| BRIDGE PICKUP | EMG 81 |
| CONTROL | 1 Volume |
| COLOR | BK |

ESP Signature Series



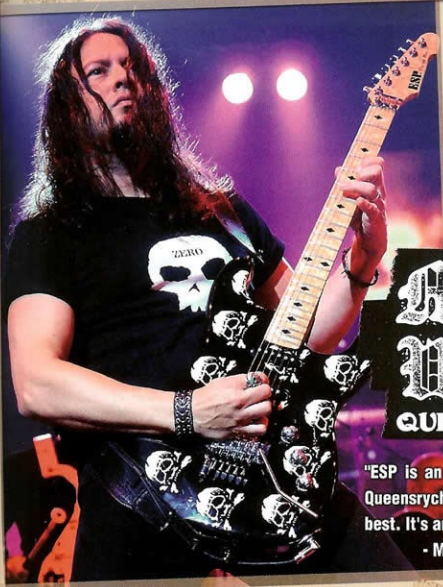
Max Cavalera

SOULFLY

Max Cavalera AX

| | |
|----------------|------------------------|
| BODY | Alder |
| NECK | Maple 3P |
| FINGER BOARD | Ebony w/ Symbol Inlays |
| CONSTRUCTION | Neck-thru-body |
| SCALE | 25.5" |
| TUNERS | Cooper |
| BRIDGE | TonePro Locking Bridge |
| HARDWARE COLOR | Black Nickel |
| FRET | 24 / XJ |
| BRIDGE PICKUP | Seymour Duncan SH-6 |
| CONTROL | 1 Volume |
| COLOR | SW |





Michael Wilton

BODY Alder
 NECK Maple
 FINGER BOARD Birdseye Maple
 CONSTRUCTION Bolt-on
 SCALE 25.5"
 TUNERS Sperzel Locking Tuner
 BRIDGE Original Floyd Rose
 HARDWARE COLOR Chrome
 FRET 22 / XJ
 NECK PICKUP ESP SS-120
 MIDDLE PICKUP ESP SS-120
 BRIDGE PICKUP Seymour Duncan TB-4
 CONTROL 1 Volume, 2 Tone
 5 way selector switch
 COLOR Black w/ Luminous Skull Graphic

Michael Wilton
QUEENSRÛCHE

"ESP is an essential part of the sound of Queensryche. I play ESP because it's the best. It's as simple as that."

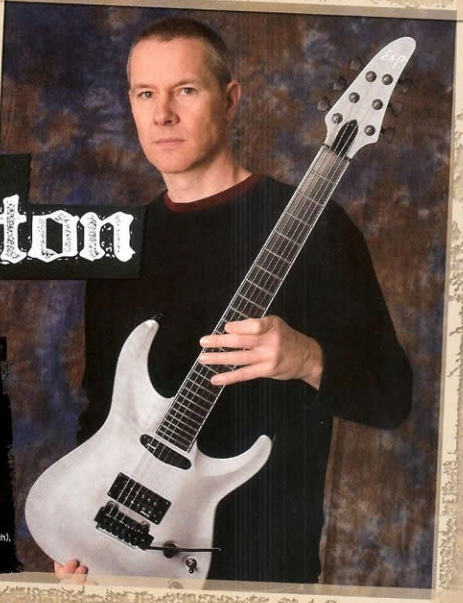
- Michael Wilton - QUEENSRÛCHE



Page Hamilton
HELMET

Page Hamilton

BODY Alder
 NECK Maple 5P with White Binding
 FINGER BOARD Ebony
 CONSTRUCTION Neck-thru-body
 SCALE 25.5"
 TUNERS Sperzel Locking Tuner
 BRIDGE Wilkinson VB-100
 HARDWARE COLOR Black Nickel
 FRET 24 / XJ
 NECK PICKUP DiMarzio Fast Track
 BRIDGE PICKUP DiMarzio Air Zone
 CONTROL 1 Volume,
 1 Tone (with push-push Tap switch),
 3way toggle switch
 COLOR Brushed Aluminum



ESP Signature Series

Roope Latvala
CHILDREN OF BODOM



Roope Latvala

BODY Alder with Pearloid Binding
NECK Maple 3P
FINGER BOARD Ebony
CONSTRUCTION Neck-thru-body
SCALE 25.5"
TUNERS Gotoh
BRIDGE Original Floyd Rose
HARDWARE COLOR Chrome, Gold
FRET 24 / XJ
BRIDGE PICKUP Seymour Duncan SH-8b "Invader"
CONTROL 1 Volume
COLOR BK

Roope Latvala RS-II

BODY Alder with Pearloid Binding
NECK Maple 3P
FINGER BOARD Ebony w/ Cross Inlay
SCALING 21-24F
CONSTRUCTION Neck-thru-body
SCALE 25.5"
TUNERS Gotoh
BRIDGE Original Floyd Rose
HARDWARE COLOR Black
FRET 24 / XJ
BRIDGE PICKUP EMG H2-H2
CONTROL 1 Volume, pre-set MM-04 installed
COLOR Light Grey



Henkka Blacksmith Forest

BODY Alder
NECK Maple 3P
FINGER BOARD Ebony
CONSTRUCTION Neck-thru-body
SCALE 34"
TUNERS Gotoh
BRIDGE Gotoh 200B-4
HARDWARE COLOR Black Nickel
FRET 24 / XJ
PICKUPS EMG 85DC
CONTROL 1 Volume, Balancer,
EMG-BOS Active EQ (Bass, Mid, Treble)
COLOR BK w/ COBHC Graphic

Henkka Blacksmith

CHILDREN OF BODOM

Henkka Blacksmith Bottom Line 5

BODY Alder
NECK Maple 3P
FINGER BOARD Ebony
CONSTRUCTION Neck-thru-body
SCALE 34"
TUNERS Gotoh
BRIDGE Gotoh 200B-5
HARDWARE COLOR Black
FRET 24 / XJ
PICKUPS EMG 400C
CONTROL 1 Volume, Balancer,
EMG-BOS Active EQ (Bass, Mid, Treble)
COLOR Army Green w/ COBHC Graphic

ESP Signature Series

薰 Kaoru
DIR EN GREY



KAORU D-KV

BODY Ash Top / Mahogany Back
NECK Maple 3P
FINGER BOARD Rosewood
CONSTRUCTION Set-neck
SCALE 25.5"
TUNERS Gotoh
BRIDGE ESP Flicker-III
HARDWARE COLOR Black Nickel
FRET 24 / XJ
NECK PICKUP Seymour Duncan SH-1s
BRIDGE PICKUP Seymour Duncan SH-4
CONTROL 1 Volume, 1 Tone, 3 way switch
COLOR BK w/ White Grain

KAORU GANESA

BODY Mahogany w/ Quilted Maple Top
NECK Maple
FINGER BOARD Maple 3P
CONSTRUCTION Bolt-on
SCALE 35"
TUNERS GOTOH GB707E
BRIDGE GOTOH 610TA-4
HARDWARE COLOR Chrome
FRET 22 / XJ
NECK PICKUP Seymour Duncan SUB-1n
BRIDGE PICKUP Seymour Duncan SUB-1b
CONTROL 1 Volume, 3 Band EQ (ESP Cinnamon)
COLOR BK



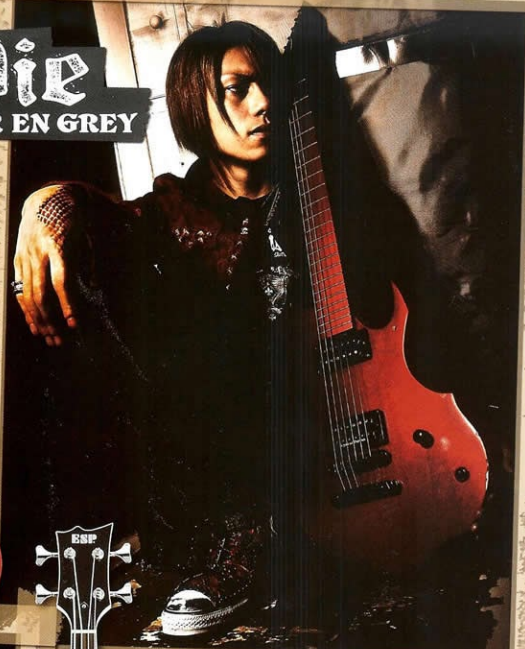
Yoshiyuki
DIR EN GREY

Die D-DR

BODY Alder (50mm)
NECK Maple
FINGER BOARD Ebony
CONSTRUCTION Bolt-on
SCALE 27" Baritone
TUNERS Gotoh
BRIDGE Gotoh Tune-mic
HARDWARE COLOR Black Nickel
FRET 22 / XJ
NECK PICKUP Seymour Duncan SH-1n
BRIDGE PICKUP Seymour Duncan SH-6b
CONTROL 1 Volume, 3 way Switch
COLOR See Thru Metallic Dark Red



Die DIR EN GREY



TOSHIYA RU-DRIVE

BODY Alder
NECK Maple
FINGER BOARD Rosewood
CONSTRUCTION Bolt-on
SCALE 35"
TUNERS Gotoh
BRIDGE Gotoh J5105J-4
HARDWARE COLOR Chrome
FRET 22 / XJ
NECK PICKUP Seymour Duncan SJB-1n (Plastic Covered)
BRIDGE PICKUP Seymour Duncan SJB-1b (Plastic Covered)
CONTROL 1 Volume, 2 Band EQ, Dummy
COLOR White



ESP Signature Series



the Gazette A01 A-1

BODY Alder
NECK Maple
FINGER BOARD Ebony
CONSTRUCTION Neck-thru-body
SCALE 25.5"
TUNERS Gotoh
BRIDGE Original Floyd Rose
HARDWARE COLOR Black Nickel
PRET 24 XJ
NECK PICKUP Lace Sensor Gold & Seymour Duncan SL59-1n
BRIDGE PICKUP Lace Sensor Gold & Seymour Duncan SL5D-1b
CONTROL 1 Volume, 3way Toggle SW, 2way Sound Character SW
COLOR BK

葵 Aoi
the Gazette



the Gazette URUHA U-01(HELLION)

BODY Mahogany w/ Maple Top, Pearlloid Binding
NECK Mahogany
FINGER BOARD Rosewood w/ Pearlloid Binding
CONSTRUCTION Set-Neck
SCALE 24.75"
TUNERS GOTOH G9350-07
BRIDGE GOTOH GE103B & GE101Z
HARDWARE COLOR Chrome
PRET 22 XJ
NECK PICKUP Seymour Duncan SPH95-1n
BRIDGE PICKUP Seymour Duncan SPH95-1b
CONTROL 1 Volume, 1 Tone, 3way toggle switch
COLOR BK

麗 Uruba
the Gazette



the Gazette REITA RF-00

BODY Alder
NECK Maple
FINGER BOARD Rosewood w/ White Binding
CONSTRUCTION Bolt-on
SCALE 25"
TUNERS GOTOH GB707E
BRIDGE GOTOH 5107A-4
HARDWARE COLOR Chrome
PRET 22 XJ
NECK PICKUP Seymour Duncan SJ8-1n
BRIDGE PICKUP Seymour Duncan SJ8-1b
CONTROL 1 Volume, 3 Band EQ (ESP Cinnamon)
COLOR BK

れん Reita
the Gazette



柩 HITSUGI Nightmare

Nightmare HITSUGI HA000MARU

BODY Mahogany/White Ash Top
NECK Maple
FINGER BOARD Ebony
CONSTRUCTION Neck-thru-body
SCALE 25.5"
TUNERS Gotoh
BRIDGE Original Floyd Rose
HARDWARE COLOR Black Nickel
FRET 24 XJ
NECK PICKUP Seymour Duncan SH-1n
BRIDGE PICKUP Seymour Duncan SH-PG1n
CONTROL 1 Volume w/Coil Split SW1, 3way Toggle SW
COLOR Burned Red



Nightmare SAKITO Sho-Ryu-Ken

BODY Alder
NECK Maple
FINGER BOARD Ebony
CONSTRUCTION Neck-thru-body
SCALE 25.5"
TUNERS Gotoh
BRIDGE Original Floyd Rose
HARDWARE COLOR Black Nickel
FRET 24 XJ
NECK PICKUP Seymour Duncan SSL-1
BRIDGE PICKUP Seymour Duncan TB-11
CONTROL 1 Volume, 3way Toggle SW, Coil Split SW
COLOR BK

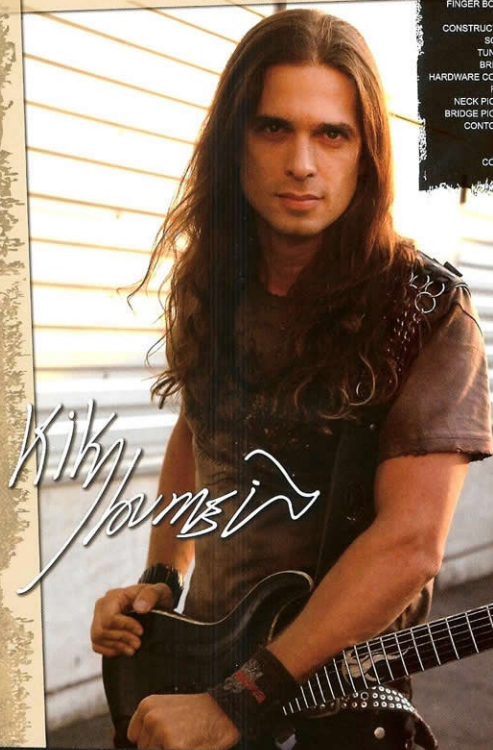
咲人 Sakito Nightmare



ESP Signature Series

Kiko Loureiro Fire-K STD

BODY Alder
NECK Maple 3P
FINGER BOARD Ebony with scalloped on 12-27Frets,
 Custom "Fire-K" Inlay
CONSTRUCTION Neck-thru-body
SCALE 25.5"
TUNERS Sperzel Locking Tuner
BRIDGE Original Floyd Rose
HARDWARE COLOR Black Nickel
FRET 27 / XJ
NECK PICKUP Seymour Duncan SHR-1n
BRIDGE PICKUP Seymour Duncan TB-14
CONTROL 1 Volume,
 1 Tone(Push/Pull Coil Split Switch),
 3 way slotted switch
COLOR BK



Kiko Loureiro

ANGRA

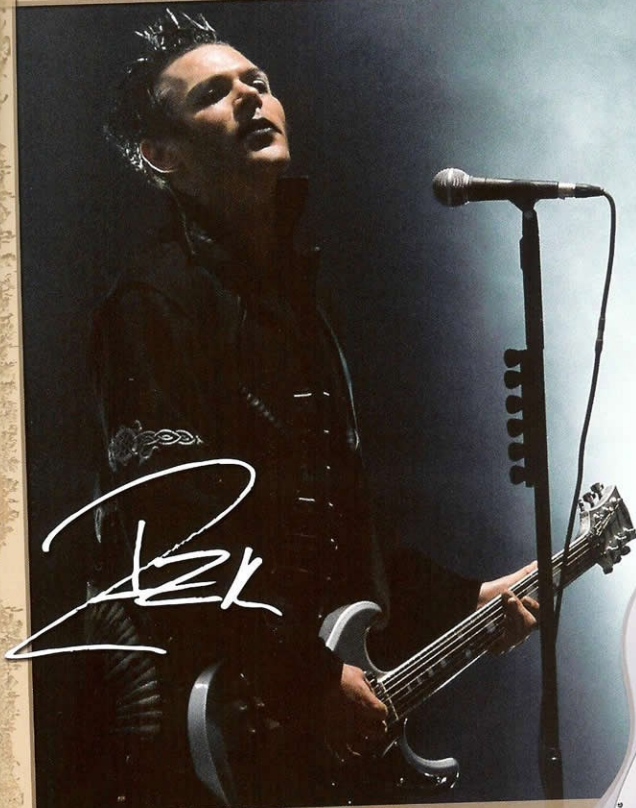
Kiko Loureiro Fire-K Custom Shop

BODY Alder
NECK Maple 3P
FINGER BOARD Ebony with scalloped on 12-27Frets,
 Custom "Fire-K" Inlay
CONSTRUCTION Neck-thru-body
SCALE 25.5"
TUNERS Sperzel Locking Tuner
BRIDGE Original Floyd Rose
HARDWARE COLOR Black Nickel
FRET 27 / XJ
NECK PICKUP Seymour Duncan SHR-1n
BRIDGE PICKUP Seymour Duncan TB-14
CONTROL 1 Volume,
 1 Tone(Push/Pull Coil Split Switch),
 3 way slotted switch
COLOR BK



Kiko Loureiro SE Custom Shop

BODY Mahogany with Flame Maple Top
NECK Maple 3P
FINGER BOARD Ebony with scalloped on 12-27Frets
CONSTRUCTION Neck-thru-body
SCALE 25.5"
TUNERS Sperzel Locking Tuner
BRIDGE Original Floyd Rose
HARDWARE COLOR Black Nickel
FRET 27 / XJ
NECK PICKUP Seymour Duncan SHR-1n
BRIDGE PICKUP Seymour Duncan TB-14
CONTROL 1 Volume,
 1 Tone(Push/Pull Coil Split Switch),
 3 way slotted switch
COLOR STB



Richard Z.

RAMMSTEIN

Richard Z. RZK-I

| | |
|----------------|-------------------------------|
| BODY | Alder |
| NECK | Maple 3P |
| FINGER BOARD | Rosewood |
| CONSTRUCTION | Neck-thru-body |
| SCALE | 25.5" |
| TUNERS | GoTosh |
| BRIDGE | Original Floyd Rose |
| HARDWARE COLOR | Chrome |
| FRET | 24 / XJ |
| NECK PICKUP | EMG 81 |
| BRIDGE PICKUP | EMG 81 |
| CONTROL | 1 Volume, 3 way toggle switch |
| COLOR | Platinum Silver |



ESP Signature Series

Jon Donais
SHADOWS FALL



Jon Donais

BODY Mahogany / Flame maple top
NECK Mahogany
FINGER BOARD Ebony
CONSTRUCTION Set-neck
SCALE 25.5"
TUNERS Sperzel Locking Tuner
BRIDGE Gotoh GTC-101
HARDWARE COLOR Black Nickel
FRET 22 / XJ
NECK PICKUP EMG81
BRIDGE PICKUP EMG58
CONTROL 1 Volume, Swayy slotted switch
COLOR NTL, Satin, STBK, Satin



Michael Paget

BULLET FOR MY VALENTINE

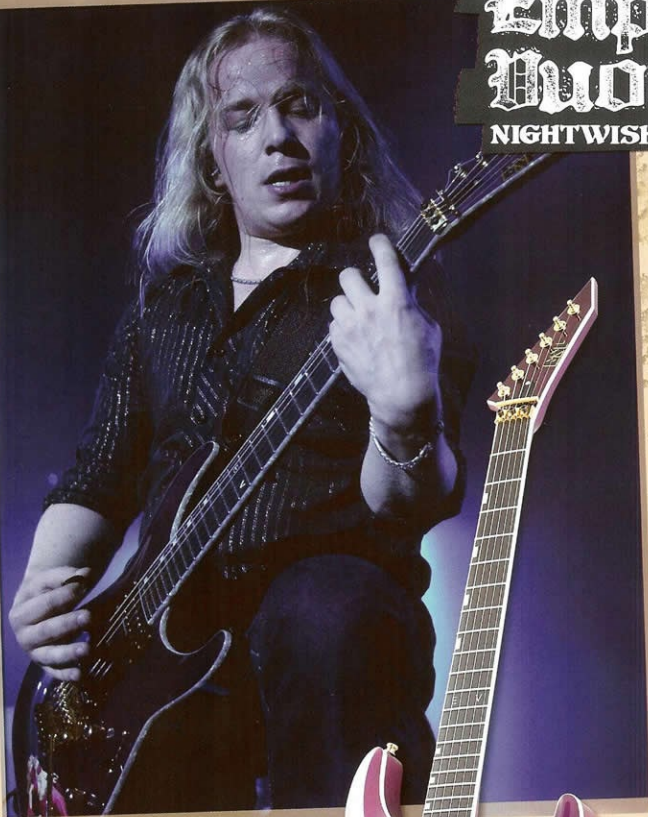
Michael Paget V

BODY Mahogany
NECK Mahogany
FINGER BOARD Ebony
CONSTRUCTION Neck-thru-body
SCALE 25.5"
TUNERS Sperzel Locking Tuner
BRIDGE Tonepros Locking bridge
HARDWARE COLOR Black Nickel
FRET 24 / Medium
NECK PICKUP EMG85
BRIDGE PICKUP EMG81
CONTROL 2 Volume, 1 Toen, Sway toggle switch
COLOR BK w/ Graphic



Emppu Vuorinen

NIGHTWISH



Emppu Vuorinen HORIZON "Harem Girls"

| | |
|----------------|---|
| BODY | Alder / Alder 2P Top |
| NECK | Maple 3P with White Binding |
| FINGER BOARD | Ebony |
| CONSTRUCTION | Neck-thru-body |
| SCALE | 25.5" |
| TUNERS | Switch |
| BRIDGE | Original Floyd Rose |
| HARDWARE COLOR | Gold |
| FRET | 24 / XJ |
| NECK PICKUP | Seymour Duncan SH-2n |
| MIDDLE PICKUP | Seymour Duncan SHR-1n |
| BRIDGE PICKUP | Seymour Duncan TB-5 |
| CONTROL | 1 Volume, 1 Tone, 5way Slotted switch |
| COLOR | See-Thru Purple with Harem Girl Graphic |

ESP Signature Series



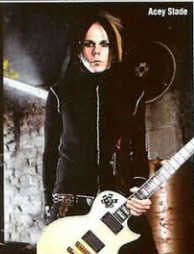
Aron Patrick

Bully (Your Dead)



Abath

memorial



Aery Slade



Alex Luster

in 1970



Alex Sarossa



Alyssa Bell



Aposthen

memorial



Ari

Alive



Alex Scholop

Dead & The Madcap



James The Jaws of Death



Basil & Timo Timo

The 69 Eyes



Ben Holloway

Years of Fes



Bobby Burns

Soulfly



Bobby Insemer

A Life Once Lost

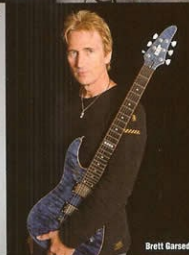


Bobby Town

Public Cell



Barclay Brink



Brett Garand



Brian Eschbach

The Black Sabbath Tribute

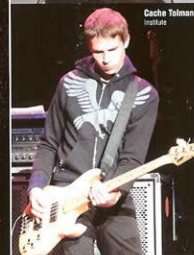


Bruce Kallick



Burtan C. Bell

Fire Factory / Ambassador of the Apocalypse



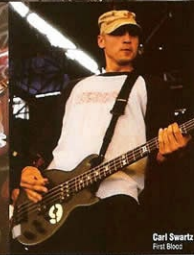
Casha Tolman

memorial



Captain Sensible

The Damned



Carl Swartz

First Blood



Carmine Rojas



Che Pilgrimage

Justice

ESP Artists

Brought to you by **music**



Chuck Gerte
Ace of Spade

Craig Gearty
Die

Cristiano Migliore
Lacuna Coil

Ballas Oryx
God Haterz

Damon Johnson

Dan Di Laskiewicz
The Asuka Brain

Dan Jacobs
Army

Danny Felice
Bred 77

Dave Pybus
Circle of Hell

Denis Schmidt
Celtan

Diego Verdazzo
El Nido

Die Letter
EXTREMAC

Die Letter
EXTREMAC

Dirk Sauer
Ego

Doc Coyle
God Pimp

David Townsend

Eric Ellis
Bury Your Dead

Eric Jarvis
Despised Icon

Erk Payne
Andromeda W.I.C.

Est Holopainen
Amorphis

Elio Giordano
Terra Tucker

Erk Payne
Andromeda W.I.C.

Est Holopainen
Amorphis

Est Holopainen
Amorphis

Est Holopainen
Amorphis

Est Holopainen
Amorphis

Est Holopainen
Amorphis

Est Holopainen
Amorphis

Est Holopainen
Amorphis

Est Holopainen
Amorphis

Est Holopainen
Amorphis

Est Holopainen
Amorphis

Est Holopainen
Amorphis

Est Holopainen
Amorphis

Est Holopainen
Amorphis

Est Holopainen
Amorphis

Est Holopainen
Amorphis

Est Holopainen
Amorphis

Est Holopainen
Amorphis

Est Holopainen
Amorphis

Est Holopainen
Amorphis

Est Holopainen
Amorphis

Est Holopainen
Amorphis

Est Holopainen
Amorphis

Est Holopainen
Amorphis

Est Holopainen
Amorphis

Est Holopainen
Amorphis

Est Holopainen
Amorphis

Est Holopainen
Amorphis

Est Holopainen
Amorphis

Est Holopainen
Amorphis

Est Holopainen
Amorphis

Est Holopainen
Amorphis

Est Holopainen
Amorphis

Est Holopainen
Amorphis

Est Holopainen
Amorphis

Est Holopainen
Amorphis

Est Holopainen
Amorphis

Est Holopainen
Amorphis

Est Holopainen
Amorphis

Est Holopainen
Amorphis

Est Holopainen
Amorphis

Est Holopainen
Amorphis

Est Holopainen
Amorphis

Est Holopainen
Amorphis

Est Holopainen
Amorphis

Est Holopainen
Amorphis

Est Holopainen
Amorphis

Est Holopainen
Amorphis

Est Holopainen
Amorphis

Est Holopainen
Amorphis

Est Holopainen
Amorphis

Est Holopainen
Amorphis

Est Holopainen
Amorphis

Est Holopainen
Amorphis

Est Holopainen
Amorphis

Est Holopainen
Amorphis

Est Holopainen
Amorphis

Est Holopainen
Amorphis

Est Holopainen
Amorphis

Est Holopainen
Amorphis

Est Holopainen
Amorphis

Est Holopainen
Amorphis

Est Holopainen
Amorphis

Est Holopainen
Amorphis

Est Holopainen
Amorphis

Est Holopainen
Amorphis

Est Holopainen
Amorphis

Est Holopainen
Amorphis

Est Holopainen
Amorphis

Est Holopainen
Amorphis

Est Holopainen
Amorphis

Est Holopainen
Amorphis

Est Holopainen
Amorphis

Est Holopainen
Amorphis

Est Holopainen
Amorphis

Est Holopainen
Amorphis

Est Holopainen
Amorphis

Est Holopainen
Amorphis

Est Holopainen
Amorphis

Est Holopainen
Amorphis

Est Holopainen
Amorphis

Est Holopainen
Amorphis

Est Holopainen
Amorphis

Est Holopainen
Amorphis

Est Holopainen
Amorphis

Est Holopainen
Amorphis

Est Holopainen
Amorphis

Est Holopainen
Amorphis

Est Holopainen
Amorphis

Est Holopainen
Amorphis

Est Holopainen
Amorphis

Est Holopainen
Amorphis

Est Holopainen
Amorphis

Est Holopainen
Amorphis

Est Holopainen
Amorphis

Est Holopainen
Amorphis

Est Holopainen
Amorphis

Est Holopainen
Amorphis

Est Holopainen
Amorphis

Est Holopainen
Amorphis

Est Holopainen
Amorphis

Est Holopainen
Amorphis

Est Holopainen
Amorphis

Est Holopainen
Amorphis

Est Holopainen
Amorphis

Est Holopainen
Amorphis

Est Holopainen
Amorphis

Est Holopainen
Amorphis

Est Holopainen
Amorphis

Est Holopainen
Amorphis

Est Holopainen
Amorphis

Est Holopainen
Amorphis

Est Holopainen
Amorphis

Est Holopainen
Amorphis

Est Holopainen
Amorphis

Est Holopainen
Amorphis

Est Holopainen
Amorphis

Est Holopainen
Amorphis

Est Holopainen
Amorphis

Est Holopainen
Amorphis

Est Holopainen
Amorphis

Est Holopainen
Amorphis

Est Holopainen
Amorphis

Est Holopainen
Amorphis

Est Holopainen
Amorphis

Est Holopainen
Amorphis

Est Holopainen
Amorphis

Est Holopainen
Amorphis

Est Holopainen
Amorphis

Est Holopainen
Amorphis

Est Holopainen
Amorphis

Est Holopainen
Amorphis

Est Holopainen
Amorphis

Est Holopainen
Amorphis

Est Holopainen
Amorphis

Est Holopainen
Amorphis

Est Holopainen
Amorphis

Est Holopainen
Amorphis

Est Holopainen
Amorphis

Est Holopainen
Amorphis

Est Holopainen
Amorphis

Est Holopainen
Amorphis

Est Holopainen
Amorphis

Est Holopainen
Amorphis

Est Holopainen
Amorphis

Est Holopainen
Amorphis

Est Holopainen
Amorphis

Est Holopainen
Amorphis

Est Holopainen
Amorphis

Est Holopainen
Amorphis

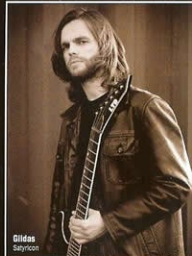
Est Holopainen
Amorphis

Est Holopainen
Amorphis

Est Holopainen
Amorphis

Est Holopainen
Amorphis

ESP Artists



Gideon
Jellyfish



Jin Jonyong
Crash



Hedgy
Fonic Cell



Hydra
Santitas



Jack Strang
The Acacia Strain



Jake E Lee



Jamin Munt
Scream Era



Jason Bozzi
Dry Kill Logic



Jason Mear
Wast of Fire



Jason Hook
Alice Cooper



Jason Miller
Goathead



Jay Reynolds
Metal Church



Jeff Duncan
Armored Saint



Jeff Kendrick
Devil Driver



Jeff Pettit
The Dillinger Escape Plan



Jens Ludwig
Eppy



Jensen
The Acacia Strain



John Kampainen
The Black Dahlia Murder



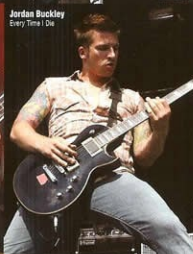
Jon Miller
Devil Driver



Johnny Chew
Freaky Deaky / Sons of Whore



Jonathan Duska
Terror



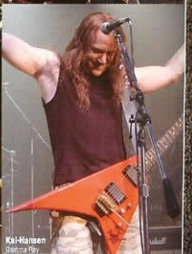
Jordan Buckley
Every Time I Die



Jordan Whelan
Sill Pennane



Justin Hughes
3 Inches of Blood



Kai Hansen
Santitas NY

ESP Artists

Brought to you by
music
with.com



Ken Andrews
Finland, UK



Koski
Finland



Keris Fyfe
The Netherlands



Kirk Windchain
Denmark



Kotchi
Finland



Kris Norris
Denmark, Israel



Kyle Johnson
Netherlands, Spain



Lalo Carrillo
USA, Mexico



Lauri Purna



Izz Pika
Finland



Lee Allus
Finland



Lige Curry
Poland, USA, Finland



Lena Chrome
Denmark



Marco Sieck
Canada



Marco Mauro Blizzi
Australia, Italy



Matti Devries
Greece



Marios Iliopoulos
Netherlands



Kaisa Aalto
Finland



Pasi Sandval
Norway, Finland



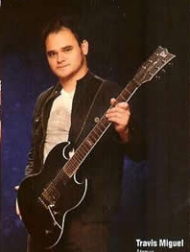
Peavy Wagner
Finland



Rob Arnold
Canada



Ted Agutter
Spain, Finland



Travis Miguel
Finland



Timo Kivisaari
Finland

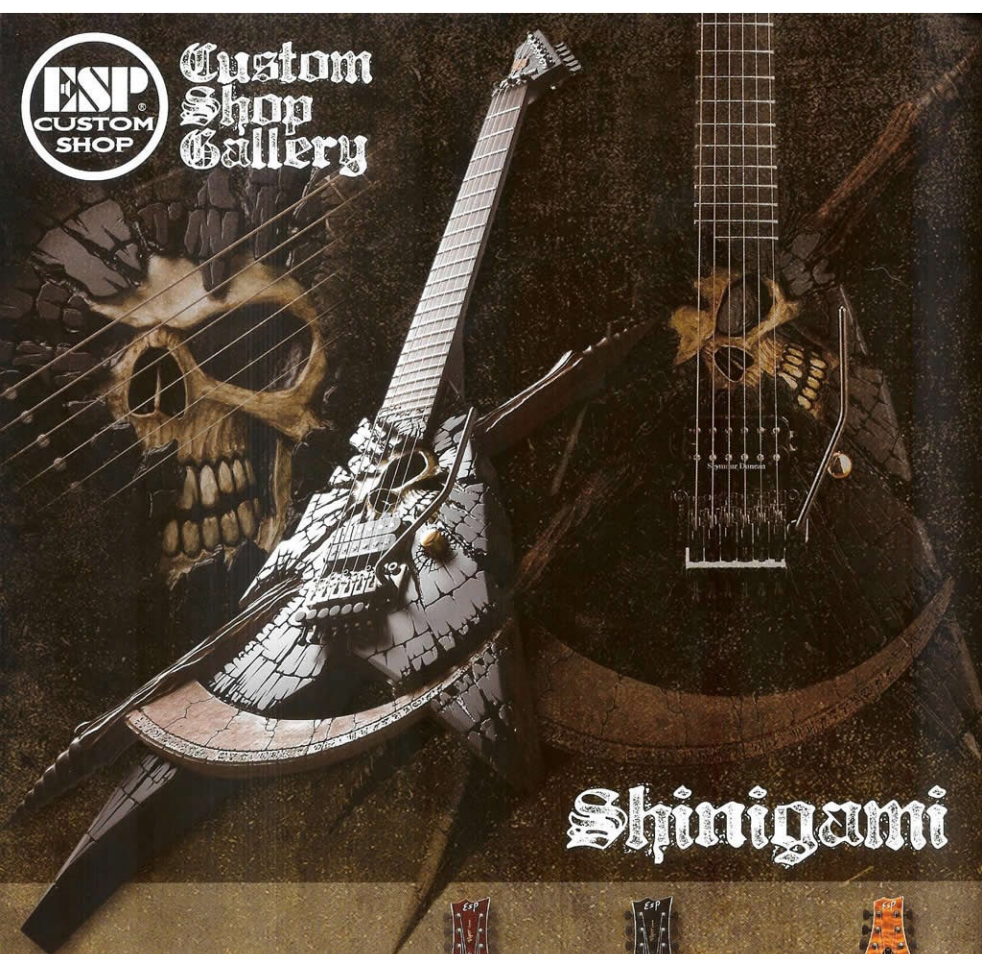


Wayne Static
Finland

ESP Artists



Custom Shop Gallery



Shinigami



Custom Series

Viper Custom

- BODY | Mahogany w/ Flamed Maple Top
- NECK | Maple 3P with White Binding
- FINGER BOARD | Ebony
- CONSTRUCTION | Neck-through body
- SCALE | 24.75"
- TUNERS | Sperzel Locking Tuner
- BRIDGE | Top Pro's Locking Bridge
- HARDWARE COLOR | Black/Nickel
- FRET | 24 / X 2
- NECK PICKUP | EMG 85
- BRIDGE PICKUP | EMG 81
- CONTROL | 1 Volume, 1 Tone, 3-way toggle switch
- COLOR | STB / STBK



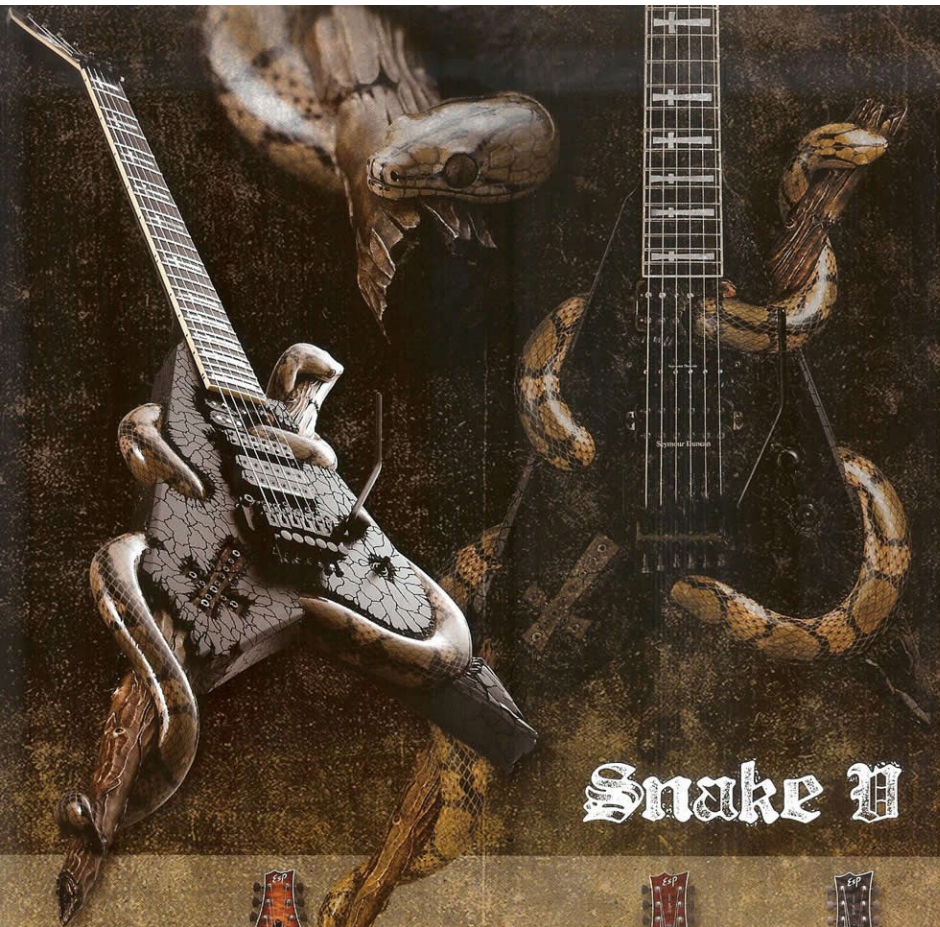
Viper Custom - STB



Viper Custom - STBK



Viper Custom - Vintage Antique



Snake III

Horizon Custom

| | |
|----------------|---------------------------------------|
| BODY | Mahogany w/ quilted Maple Top |
| NECK | Maple 3P with White Binding |
| FINGER BOARD | Ebony |
| CONSTRUCTION | Neck-in-body |
| SCALE | 25.5" |
| TUNERS | Sigvar Locking Tuner |
| BRIDGE | ForceProbe Locking Bridge |
| HARDWARE COLOR | Black Nickel |
| FRET | 22 / J.J. |
| NECK PICKUP | Seymour Duncan SH-2 |
| BRIDGE PICKUP | Seymour Duncan SH-1B |
| CONTROL | 1 Volume, 1 Tone, 3-way toggle switch |
| COLOR | Antique Sunburst 1 Vintage Amber |



Horizon Custom - Antique Sunburst

Eclipse Custom

| | |
|----------------|---------------------------------------|
| BODY | Mahogany w/ Flamed Maple Top |
| NECK | Maple 3P with White Binding |
| FINGER BOARD | Ebony |
| CONSTRUCTION | Neck-in-body |
| SCALE | 24.75" |
| TUNERS | Sigvar Locking Tuner |
| BRIDGE | ToneProbe Locking Bridge |
| HARDWARE COLOR | Black Nickel |
| FRET | 22 / J.J. |
| NECK PICKUP | EMG 60 |
| BRIDGE PICKUP | EMG 81 |
| CONTROL | 1 Volume, 1 Tone, 3-way toggle switch |
| COLOR | STBC, STBK |



Eclipse Custom - STBC



Eclipse Custom - STBK

01 Original Picks Tear Drop



1 Polyacetal BK 1.0mm



2 Polyacetal WH 1.0mm



3 Polyacetal BK 0.8mm



4 Polyacetal BLU 0.8mm



5 Polyacetal RED 0.8mm



6 Polyacetal 30th Anniv. 1.0mm



7 Polyacetal Skull Logo 1.0mm



8 Polyacetal Paisley Logo 1.0mm



9 Grip Logo Sky Blu Heavy 1.0mm



10 Grip Logo WH Heavy 1.0mm



11 Grip Logo Green Medium 0.8mm



12 Grip Logo BK Medium 0.8mm



13 Hairline Go Heavy 1.0mm



14 Hairline Silver Heavy 1.0mm



15 Grip Holes Yellow Medium 0.8mm



16 Grip Rubber Logo BK 0.8mm



17 Grip Rubber Logo WH 1.0mm

02 Original Picks Triangle



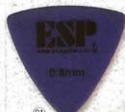
18 Polyacetal BK 1.0mm



19 Polyacetal WH 1.0mm



20 Polyacetal BK 0.8mm



21 Polyacetal BLU 0.8mm



22 Polyacetal RED 0.8mm



23 Grip Logo Sky Blu Heavy 1.0mm



24 Grip Logo WH Heavy 1.0mm



25 Grip Logo Green Medium 0.8mm



26 Grip Logo BK Medium 0.8mm



27 Hairline Go Heavy 1.0mm



28 Hairline Silver Heavy 1.0mm



29 Grip Holes Yellow Medium 0.8mm



30 Grip Rubber Logo BK 0.8mm



31 Grip Rubber Logo WH 1.0mm

03 Original Straps



① ES-S-12 Nylon Max. 135cm



② ES-S-12R PVC Leather Max. 165cm



③ ES-S-12W PVC Leather Max. 135cm



④ ES-S-12L Nylon Max. 180cm



⑤ ES-S-15L Nylon/Leather end Max. 180cm



⑥ ES-S-30R Leather Max. 165cm



⑦ ES-S-85WS Leather Max. 165cm



⑧ ES-S-35W Leather Max. 150cm



⑨ ES-S-55TA Leather Max. 150cm



⑩ ES-S-35W Skull Leather Max. 150cm



⑪ ES-S-55TA Skull Leather Max. 150cm



04 Gig Bags

- ① GB-18G (Guitar)
- ② GB-20B (Bass)
- ③ EF-90G (Guitar)
- ④ EF-100B (Bass)



05 Cables

ESP Custom Lab Cable

- CL-C-6SS (6m Straight-Straight)
- CL-C-6SL (6m Straight-Angled)
- CL-C-3SS (3m Straight-Straight)
- CL-C-3SL (3m Straight-Angled)



Electric Sound Products
Custom Lab

EC-C-13&16



EC-C-13
(3m Straight-Straight)



EC-C-16
(5m Straight-Angled)

06 Fret Protectors



- ① FP-G 450mm (For 22F Guitar)
- ② FP-B 610mm (For 21F Bass)
- ③ FP-BL 655mm (For 24F Bass)



07 Preamp Booster

MM-04



MM-04 is a preamp booster which was specially designed for Alexi Laiho according to his requirement on seeking of the heaviest sound, and now it's available for all the guitar players as a regular production by joint development of ESP and the ESP Finnish distributor, "Musamaailma". 4 frequency pre-set switches and a trimmer pot allow you to get any sound character you need.

08 Strings



ESP USA GUITAR STRINGS

| | | | | | | |
|-------------|---------|---------|---------|---------|---------|---------|
| ① GS-USA XL | 1st 009 | 2nd 011 | 3rd 016 | 4th 024 | 5th 032 | 6th 042 |
| ② GS-USA CL | 1st 009 | 2nd 011 | 3rd 016 | 4th 026 | 5th 036 | 6th 046 |
| ③ GS-USA L | 1st 010 | 2nd 013 | 3rd 017 | 4th 026 | 5th 036 | 6th 046 |

ESP USA BASS STRINGS

| | | | | | |
|-----------|---------|---------|---------|---------|---------|
| ④ BS-USA | 1st 045 | 2nd 065 | 3rd 085 | 4th 105 | |
| ⑤ BS5-USA | 1st 045 | 2nd 065 | 3rd 085 | 4th 105 | 5th 130 |



ESP GUITAR STRINGS

| | | | | | | |
|----------|---------|---------|---------|---------|---------|---------|
| ⑥ GS-6XL | 1st 009 | 2nd 011 | 3rd 016 | 4th 024 | 5th 032 | 6th 042 |
| ⑦ GS-6HB | 1st 009 | 2nd 011 | 3rd 016 | 4th 026 | 5th 036 | 6th 046 |
| ⑧ GS-6L | 1st 010 | 2nd 013 | 3rd 017 | 4th 026 | 5th 036 | 6th 046 |

ESP BASS STRINGS

| | | | | | |
|-----------|---------|---------|---------|---------|--|
| ⑨ BS-20HB | 1st 045 | 2nd 065 | 3rd 080 | 4th 105 | |
| ⑩ BS-30HB | 1st 045 | 2nd 065 | 3rd 080 | 4th 105 | |
| ⑪ BS-20MS | 1st 047 | 2nd 065 | 3rd 085 | 4th 106 | |

09 Maintenance Goods

POLISHING CLOTH



CARE SPRAY

- ⑧ JS-8 Jett Slide
(For smoother fingering)
- ⑨ JG-8 Jett Gloss
(Polishing Spray)
- ⑩ JL-8 Jett Lemon
(Lemon Oil)

- ① CL-6 (Blue)
- ② CL-6 (Purple)
- ③ CL-6 (Pink)
- ④ CL-8G (Red)
- ⑤ CL-8G (Orange)
- ⑥ CL-8G (Yellow)
- ⑦ CL-15 MICRO STAR



Brought to you by



HOW TO PLACE AN ORDER

- Step 1** Fill out the attached custom order form and submit it to your authorized ESP dealer. Also, if you'd like to get your original shape, give them your rough drawing too..
- Step 2** You will get a price quote from your dealer in a couple of days. (We might ask you for more detailed information to give you exact price.) Also, we will send you a computer drawing of the guitar image according to your request. If you like it, go step 3. If not, we will do estimate again and again till you will be satisfied with it.
- Step 3** Double check your specification, and make up your mind. OK, now place an order!
- Step 4** Around 4 to 8 months later(delivery time will be different depend on it's specification.), finally your dream guitar become a reality, and it's in your hand!

WOOD MATERIAL

Wood material is the most important part characterizing your instrument's sound.



Sound Character

| | Weight | Hardness | High | Mid | Low | |
|-------------------|-----------|----------|------|-----|-----|--|
| Alder | Medium | Soft-Med | 6 | 7 | 6 | Nicely balanced dry tone, rich mid range. Most popular wood |
| Mahogany | Med-Heavy | Soft-Med | 5 | 7 | 8 | Warm and rich mid & low, clean and smooth high |
| White Ash | Heavy | Hard | 8 | 5 | 7 | Punchy low and edged high, very aggressive sound |
| Swamp Ash | Ex.Light | Soft | 8 | 4 | 6 | Extremely light weight, very dry sound |
| Hard Maple | Heavy | Ex.Hard | 7 | 6 | 5 | Attack tone with quick response, nice balance with mahogany back |
| Soft Maple | Medium | Medium | 7 | 6 | 5 | Beautiful quilted grain,nice balance with mahogany back |
| Paduak | Heavy | Hard | 8 | 5 | 5 | Bright and dry sound with tight bottom, |
| Bubinga | Ex.Heavy | Ex.Hard | 6 | 7 | 9 | Very chunky, heavy bottom. Heaviest wood. |
| Walnut | Heavy | Hard | 7 | 8 | 6 | Plenty of mids, warm viscid tone |
| Koa | Med-Heavy | Med-Hard | 6 | 8 | 7 | Rich and warm mid range, sometime with nice flame grain |
| Rosewood | Heavy | Hard | 5 | 8 | 6 | Creamy and warm sound with rich body |
| Ebony | Heavy | Ex.Hard | 7 | 7 | 6 | Mostly used for fingerboard, attacky sound, "Black Beauty" looking |
| Basswood | Light | Light | 6 | 6 | 5 | Wide range balanced tone, close to alder but, less body |

SCALE LENGTH

*Longer scale gives you tighter tension.

| | Long | Medium | Short | Super Long |
|---------------|-------|--------|-------|------------|
| Guitar | 25.5" | 24.75" | 24" | 27" |
| Base | 34" | 32" | N/A | 35" |

FRETS

HEIGHT : Easy to bend or vibrate on higher frets.

WIDTH : Fat sound on wider frets, quick response on thinner frets.

| | | Width | Height |
|--|-------|-------------|--------|
| | #213 | Jumbo | 2.7mm |
| | #214 | Standard | 2.4mm |
| | #214N | Tall | 2.4mm |
| | #215 | Wide | 2.9mm |
| | #60 | Extra Jumbo | 2.8mm |
| | #23 | Vintage | 2.0mm |

NECK GRIP SHAPE



FINGERBOARD RADIUS

- 400R** Fit to most of locking tremolo, very flat
- 320R** Typically used for set-neck guitar
- 305R** Just fit to Original Floyd Rose
- 240R** Little flatter than vintage
- 170R** Vintage





CUSTOM GUITAR ORDER FORM

DATE _____ FAX NUMBER _____

DEALER _____

CUSTOMER _____

MODEL _____ GUITAR BASS

Right Handed Left Handed

CUSTOM ORDER DELIVERY TIME IS AROUND 4 TO 8 MONTHS.

PLEASE NOTE: ESP Custom Shop instruments are individually hand-crafted and delivery times are vary depend on specification.

Please submit this form to an Authorized ESP Dealer for a suggested retail price quote and estimate delivery time. If you have any questions or need more detailed information on specification, please call your Authorized ESP Dealer or feel free to contact ESP directly by e-mail at: msuzuki@esp guitars.co.jp. We are pleased to assist you to get your dream guitar!

SUGGESTED RETAIL PRICE QUOTE INCLUDING CASE: \$ _____

Quote to be filled out by ESP or an Authorized ESP Dealer.

SCALE LENGTH

Guitar 25.5"(Long) 24.75"(Medium) 24"(Short) 27"(Baritone)
Bass 34"(Long) 32"(Medium) 35"(Super Long)

BODY

Body Shape Horizon Eclipse M Viper MV Forest EX V Other _____

Construction Bolt-on(Heel-less Cut Yes No / Neck Set Plate Yes No) Neck-Thru Set Neck

Material Alder Ash Maple Mahogany Other _____ Quilted Maple Top Flame Maple Top

Binding Top / Color: _____ Back / Color: _____ Color: White, Creme, Black

Routing Back(No pickguard) Front(with Pickguard)

Pickup Configuration Bridge: Hum SC Middle: Hum SC Neck: Hum SC Other: _____

Finish _____ (if not a Standard Finish, please supply sample color or artwork)

NECK

Headstock Shape ESP Pointed ESP Vintage H EC F/B C Other: _____

Reverse: Yes No Tilt: Yes No

Headstock Finish Black Natural Match Body Finish Other: _____

Neck Finish Natural Satin Natural Gloss Match Body Finish Other: _____

Fingerboard Maple Rosewood Ebony Other: _____

Number of Frets 21 22 24 Fretless Other: _____

Fret Size Jumbo (#213) Standard (#214) Tall (#214H) Wide (#215) Extra Jumbo (#216) Vintage (#23)

Inlays Dots None Other: _____ (artwork may be requested)

ESP Inlay at 12th Fret Yes No

Fingerboard End Square Round

Fingerboard Binding Yes No Color: White Creme Black Other: _____

Headstock Binding Yes No Color: White Creme Black Other: _____

Nut Locking Bone Graphite Nut Width: 41mm 42mm 43mm 45mm Other: _____

Neck Contour U Thin U Slim V V Thin Flat Other: _____

Fingerboard Radius 170R 240R 305R 320R 400R

Headstock Logo ESP ESP Custom ESP(Model Name) ESP(Script) Other: _____

PARTS

Hardware Color Black Chrome Gold

Tuner Gotoh Deluxe Gotoh Magnum Lock Sperzel Other: _____

Bridge _____

Pickguard Yes No If "Yes", Color: _____

Input Jack Side of Body(Cat's Eye Square Deep Dish) Deep Dish on Top Other: _____

Pickups ESP EMG Seymour Duncan Other: _____

Neck _____ Middle _____ Bridge _____

Control Pattern Specify Controls: _____

Switches or any Special Wiring: _____

Color Chart



ESP

ESP CO., LTD. www.espguitars.co.jp/oversea/

2-16-11 TAKADA, TOSHIMA-KU, TOKYO 171-0033 JAPAN

PHONE: 81-3-3962-0336 / FAX: 81-3-3962-3694 E-mail: masuzaki@espguitars.co.jp

music