

ACOUSTIC GUITARS

SINCE 1876

1993

HAND

CRAFTED

WASHBURN

What A Great Guitar Should Be

Washburn®

HISTORY

CHICAGO 1876

In 1876, America was only 100 years old, still a young country as viewed through the eyes of the world. Chicago was already recognized as a center for transportation, higher education, journalism and culture.

Amidst this backdrop began the legendary guitars of George Washburn Lyon. The Lyon name would be omitted from the trademark and these world class instruments would be known as the guitars of George Washburn, rising to become one of the largest selling brands in the world.

Today, we live in a much different world. The age of computers and laser based technologies has touched almost all aspects of manufacturing, but Washburn guitars are still produced with a dedication to hand craftsmanship and quality.

We consider time to be the ultimate test of a product's worthiness. Washburn has met this challenge with undeniable excellence and remains one of the truly great names in the world of music.

It is with pride that we present our superb line of acoustic instruments on the following pages.

GOLDEN HARVEST™

D90S

- Hand selected, aged, solid European spruce top
- Triangular cut, hand shaved bracing
- Book matched, Indian rosewood back and sides with maple and abalone inlay
- Five piece, laminated neck of mahogany and rosewood
- Ebony fingerboard and bridge with abalone inlay
- Intricate soundhole rosette with abalone trim
- Brazilian rosewood pick guard
- Intricate maple and rosewood binding marquetry with abalone inlay
- Hand rubbed satin lacquer finish



Engraving of the original Washburn Chicago factory from the 1897 catalog



WASHBURN

What A Great Guitar Should Be

Specifications subject to change without notice.

© Copyright 1993 WASHBURN INTERNATIONAL

255 Corporate Woods Parkway Vernon Hills, IL 60061-3109 USA (708) 913-5511

Printed in the USA

PREMIUM WOOD

HAND CRAFTED ACOUSTICS



HARVEST DELUXE™ D70S

Hand selected, aged, solid European spruce top
Specially designed, triangular cut, hand shaved bracing
Three piece, rosewood back with maple inlay
Five piece, laminated neck of mahogany and rosewood
Ebony fingerboard and bridge with abalone inlay
Intricate soundhole rosette with abalone trim
Brazilian rosewood pick guard
Intricate maple and rosewood binding
Hand rubbed satin lacquer finish



HARVEST™ D68S

Hand selected, aged, solid European spruce top
Specially designed, triangular cut, hand shaved bracing
Book matched, Indian rosewood back and sides
Five piece, laminated neck of mahogany and rosewood
Polished rosewood fingerboard
Ebony bridge
Brazilian rosewood pick guard
Maple and rosewood binding
Hand rubbed satin lacquer finish

1896 REISSUE R306

Solid cedar top
Bookmatched, rosewood back with ornate center strip
Mahogany neck
Rosewood fingerboard with original pearl inlay
Intricate soundhole rosette
Carved rosewood bridge with compensated saddle
Herringbone binding



PRAIRIE SONG™ D61S

Aged, lightweight, shaved spruce bracing
Aged, European spruce top
Book matched rosewood back
Select mahogany neck with diamond cut reinforcement
Polished rosewood fingerboard and bridge
Brazilian rosewood pick guard
Canadian rock maple binding and purfling
12 string model available (D61SW12)



SOLID TOP

ACOUSTICS



D32S

Select, solid cedar top
Aged, lightweight, shaved
spruce bracing
Exotic, deep grained,
Makassar back and sides
Solid mahogany neck with
diamond cut reinforcement
Bound, polished rosewood
fingerboard
Rosewood bridge
Compensated bone saddle
Deluxe, chrome, die cast tuners

J20S

Select, solid cedar top
Aged, lightweight, shaved spruce bracing
Book matched, walnut back and sides
Solid mahogany neck with diamond
cut reinforcement
Polished rosewood fingerboard and bridge
Compensated bone saddle
Deluxe, chrome, die cast tuners

J50S

Select, solid spruce top
Aged, lightweight,
shaved spruce bracing
Book matched, birdseye maple
back and sides
Solid mahogany neck with
diamond cut reinforcement
Polished rosewood
fingerboard and bridge
Compensated bone saddle
Deluxe, gold, die cast tuners
with pearl buttons



D30S

Select, solid cedar top with
tortoise shell pick guard
Aged, lightweight, shaved spruce bracing
Book matched, birdseye maple
back and sides
Solid mahogany neck with
diamond cut reinforcement
Polished rosewood fingerboard and bridge
Compensated bone saddle
Deluxe, chrome, die cast tuners



D28S. D28S12

Select, solid spruce top
Scalloped, lightweight spruce bracing
Three piece, rosewood back and sides
Solid mahogany neck with
diamond cut reinforcement
Polished rosewood fingerboard and bridge
Gold, die cast tuning machines
12 string model available



D25S

Southern jumbo
Select, solid spruce top
Scalloped, lightweight bracing
Book matched, highly figured
ovankol back and sides
Five piece mahogany and
rosewood neck with
diamond cut reinforcement
Polished rosewood
fingerboard and bridge
Gold, die cast tuners



D21S

Select, solid spruce top
Scalloped, lightweight spruce bracing
Book matched rosewood back and sides
Mahogany neck with
diamond cut reinforcement
Polished rosewood fingerboard and bridge
Gold, die cast tuners



D20S

Select, solid spruce top
Scalloped, lightweight
spruce bracing
Book matched flamed maple
back and sides
Mahogany neck with diamond
cut reinforcement
Polished rosewood
fingerboard and bridge
Chrome, die cast tuners

WASHBURN

ACOUSTICS

D12

Select spruce top
Scalloped, spruce bracing
Mahogany back and sides
Mahogany neck with
diamond cut reinforcement
Rosewood fingerboard
and bridge
Chrome, die cast tuners

Washburn has an acoustic for everyone.

From the beginner to the recording professional, Washburn's wide selection fits every player level. One thing remains constant, Washburn quality.

D1212

Select spruce top
Scalloped, spruce bracing
Mahogany back and sides
Mahogany neck with
diamond cut reinforcement
Rosewood fingerboard
and bridge
Chrome, die cast tuners
12 String



D10

Spruce top
Mahogany back and sides
Mahogany neck
Rosewood fingerboard
and bridge
D10CE cutaway with

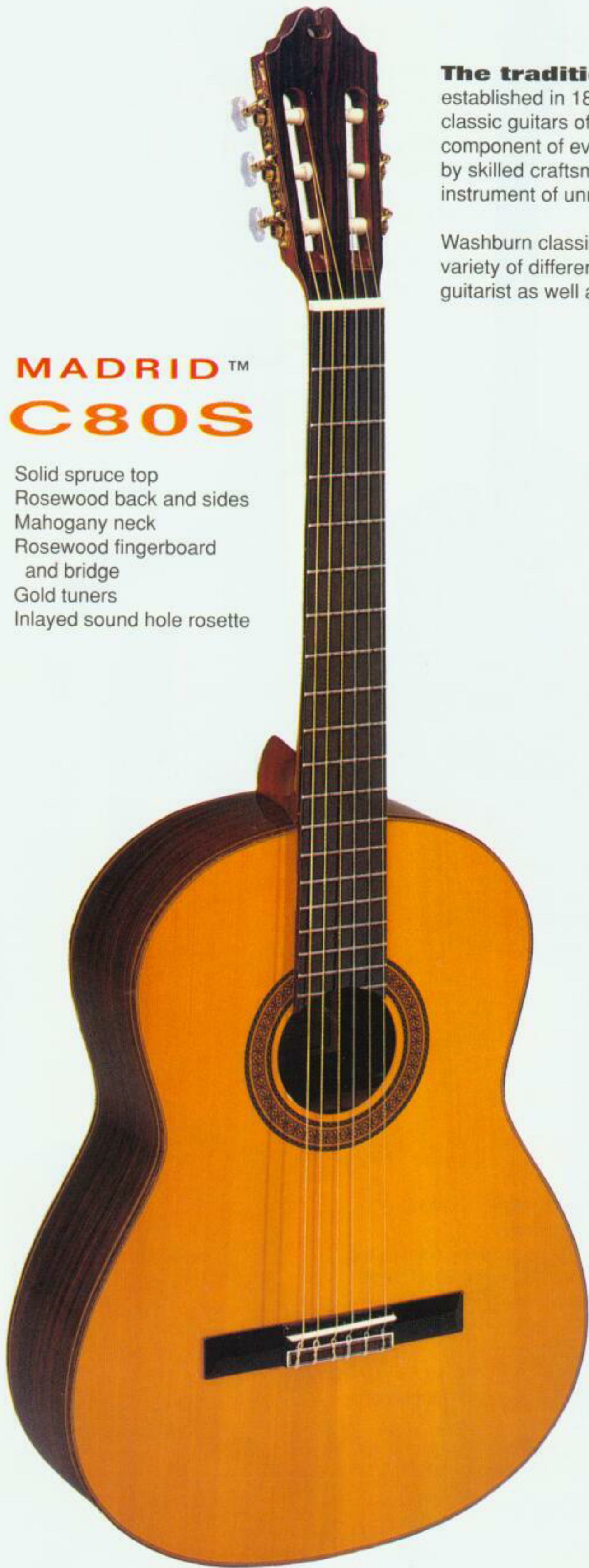
D13

Select spruce top
Scalloped, spruce bracing
Highly figured ovankol
back and sides
Mahogany neck with
diamond cut reinforcement
Rosewood fingerboard
and bridge
Chrome, die cast tuners
12-string available (D1312)



CLASSIC GUITARS

ENRIQUE TAPICAS



MADRID™ C80S

Solid spruce top
Rosewood back and sides
Mahogany neck
Rosewood fingerboard
and bridge
Gold tuners
Inlaid sound hole rosette

The tradition of excellence established in 1876 continues in Washburn classic guitars of Enrique Tapicas. Each component of every instrument is hand-made by skilled craftsmen. The result is an instrument of unmatched quality and tone.

Washburn classic guitars are available in a variety of different models to suit the concert guitarist as well as the novice player.



MADRID™ ACOUSTIC ELECTRIC C84CE

Solid cedar top
Rosewood back and sides
Mahogany neck
Rosewood fingerboard
and bridge
Gold tuners
Florentine cutaway
Equis II preamp system

CADIZ™ C40

Spruce top
Mahogany back and sides
Mahogany neck
Rosewood fingerboard and bridge
Chrome tuners

ZARAGOZA™ C60

Spruce top
Rosewood back and sides
Mahogany neck
Rosewood fingerboard
and bridge
Gold tuners



ELECTRIC ACOUSTIC

DREADNOUGHT CUTAWAYS

The Stephen's Extended Cutaway

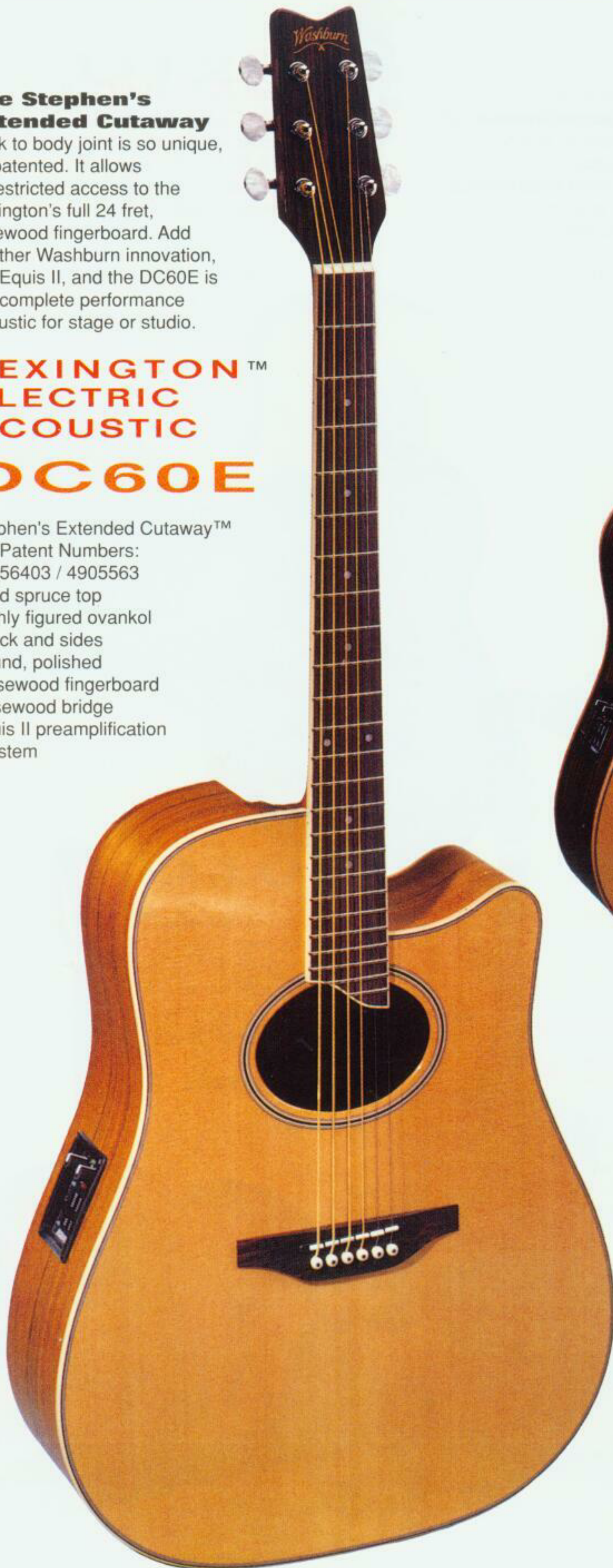
neck to body joint is so unique, its patented. It allows unrestricted access to the Lexington's full 24 fret, rosewood fingerboard. Add another Washburn innovation, the Equis II, and the DC60E is the complete performance acoustic for stage or studio.

LEXINGTON™ ELECTRIC ACOUSTIC DC60E

Stephen's Extended Cutaway™

US Patent Numbers:
4856403 / 4905563

Solid spruce top
Highly figured ovankol
back and sides
Bound, polished
rosewood fingerboard
Rosewood bridge
Equis II preamplification
system



HARVEST™ ELECTRIC ACOUSTIC

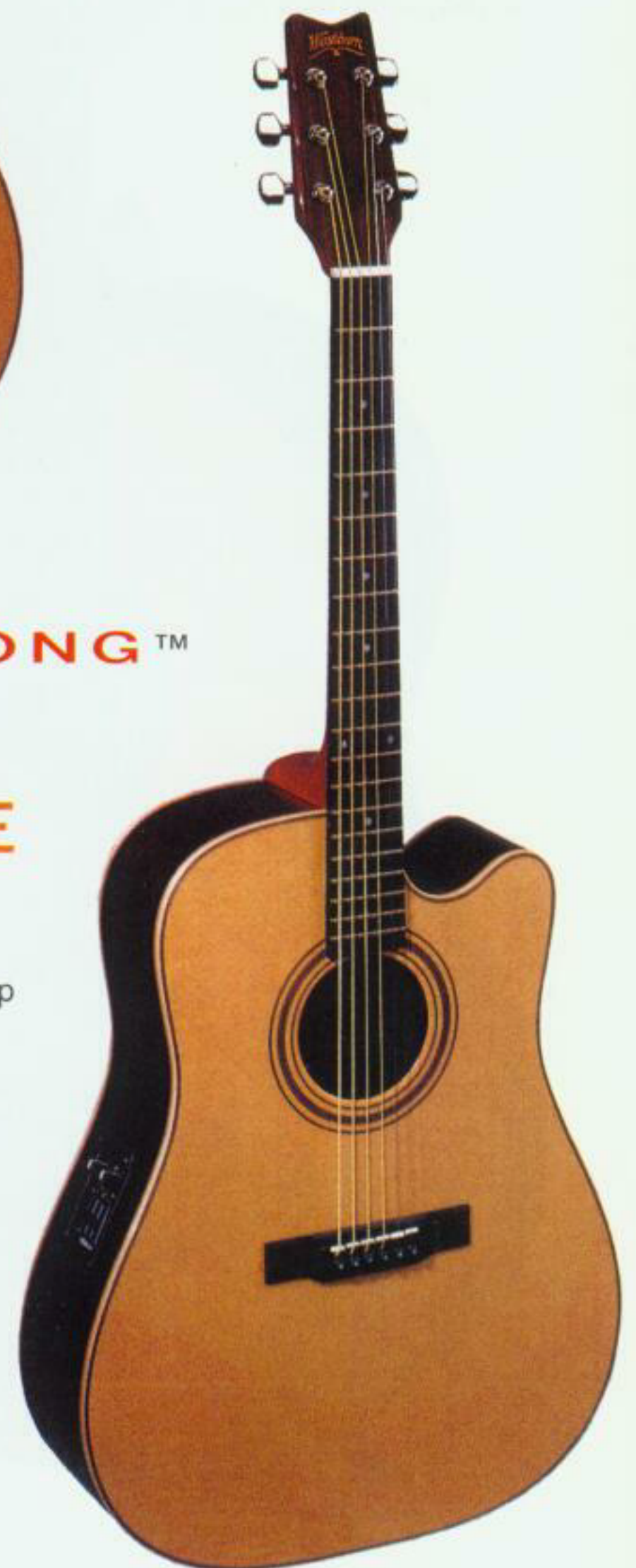
D68WCE

Hand selected, aged, solid
European spruce top
Specially designed, triangular
cut, hand shaved bracing
Book matched Indian rosewood back
Five piece, laminated neck of
mahogany and rosewood
Polished rosewood fingerboard
Ebony bridge
Brazilian rosewood pick guard
Maple and rosewood binding
Hand rubbed satin lacquer finish
Equis II preamplification system

PRAIRIE SONG™ ELECTRIC ACOUSTIC

D61CE

Aged, lightweight, shaved
spruce bracing
Aged, solid European spruce top
Book matched, rosewood back
Select mahogany neck with
diamond cut reinforcement
Polished rosewood
fingerboard and bridge
Brazilian rosewood pick guard
Canadian rock maple
binding and purfling
Equis II™ preamplification
system
12 string model
available (D61SW12)





D17CE

Solid spruce top on D17SCE B and D17SCE N
 Bookmatched flamed sycamore top, back and sides
 on D17CE BR or D17CE WR
 Aged, lightweight, shaved spruced bracing
 Mahogany neck
 Rosewood fingerboard and bridge
 Slotted diamond inlays
 15:1 die-cast gold tuners with pearl buttons
 Equis II preamplification system
 (D17WR Wine Red shown on cover)

D17SCE N



D17SCE B



D17CE BR



D12CE

Select spruce top
 Scalloped, spruce bracing
 Mahogany back and sides
 Mahogany neck with
 diamond cut reinforcement
 Rosewood fingerboard
 and bridge
 Chrome, die cast tuners
 Equis II preamp system



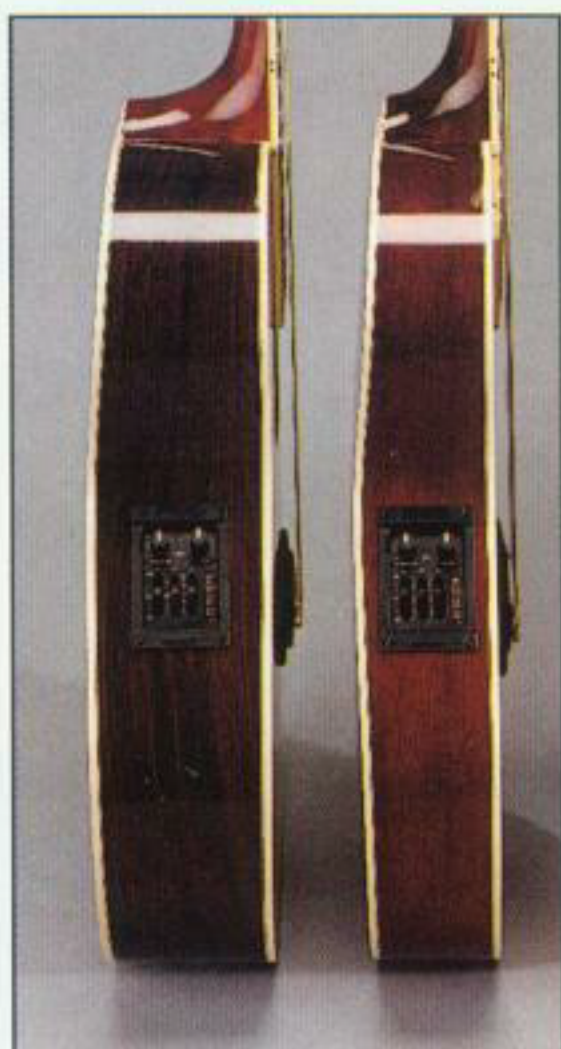
D10CE

Select spruce top
 Mahogany back and sides
 Mahogany neck with
 diamond cut reinforcement
 Rosewood fingerboard and bridge
 Chrome, die cast tuners
 EQ300 preamp system



FESTIVAL™ SERIES

ELECTRIC ACOUSTICS



TANGLEWOOD™ / WOODSTOCK™

EA45·EA44

Solid cedar top / Oval sound hole
Rosewood back and sides
Matching rosewood headstock overlay
Mahogany neck / Rosewood fingerboard and bridge
Slotted diamond fret markers
15:1 die-cast chrome tuners with pearl buttons
Equis II preamplification system
EA45 Tanglewood deep Body
EA44 Woodstock shallow body

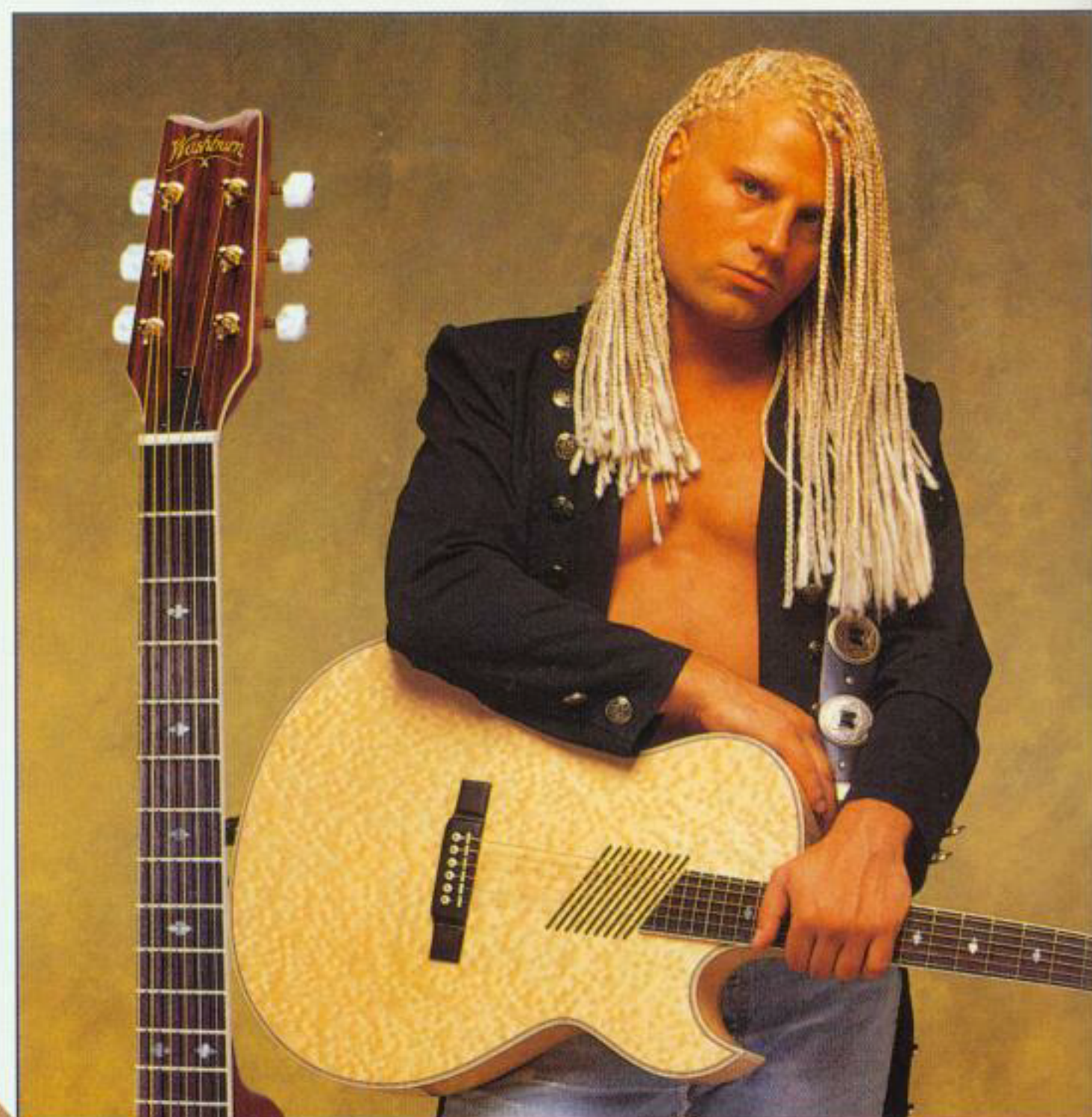
EA45 / EA44

Body depth comparison

MARQUEE™

EA36 Natural and
Vintage Sunburst

Computer designed "sound channels"
Bookmatched birdseye top, back and sides
Rosewood headstock overlay
Shallow body
Rosewood fingerboard and bridge
Slotted diamond fret markers
15:1 gold die-cast tuners
with pearl buttons
Equis II preamplification system



BROOKS

of Slammin' Gladys
EA36 Natural

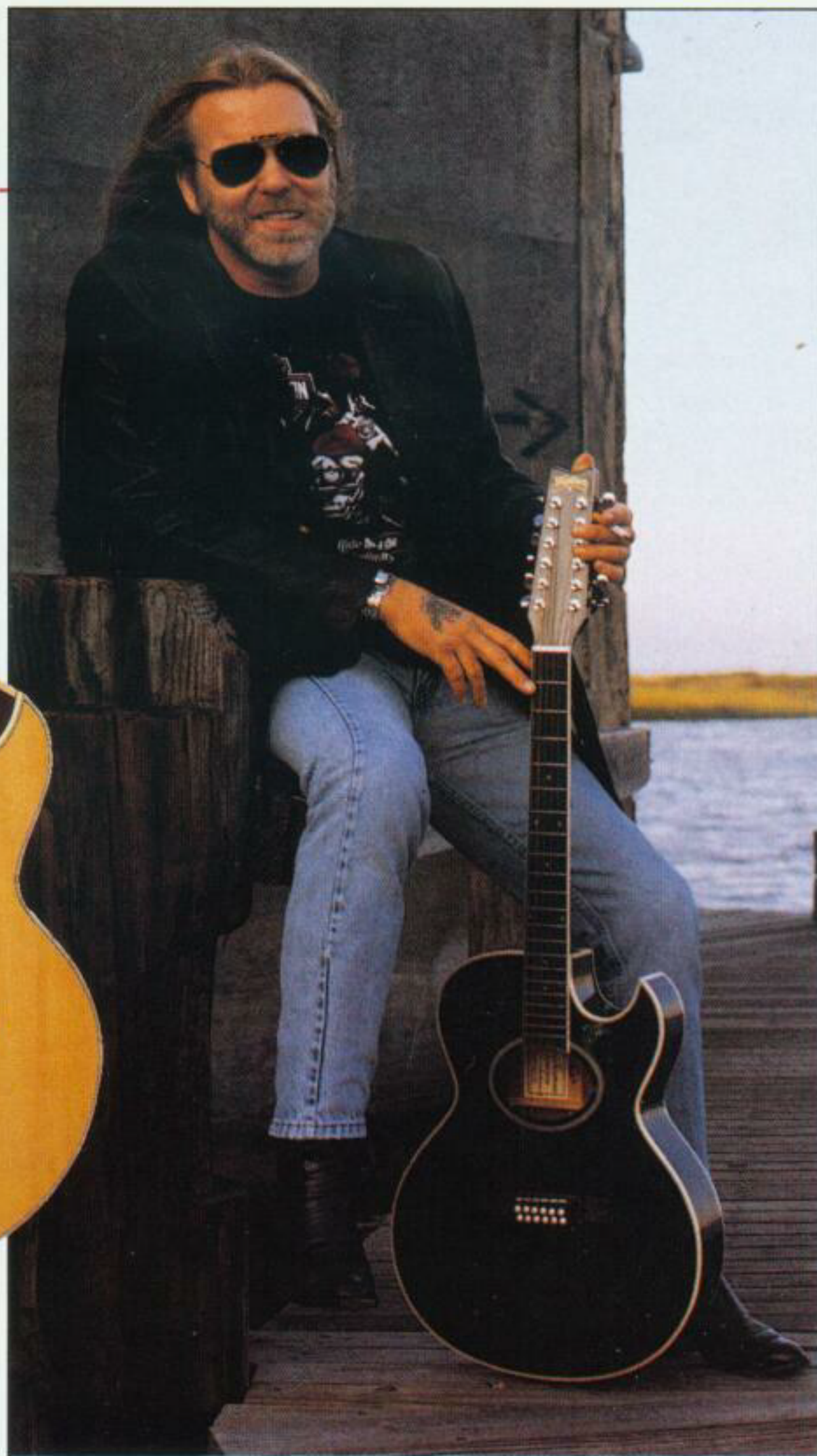


PHOTO: KIRK WEST

NEWPORT™
EA20·EA2012

Select hardwood top / Oval sound hole Black, White and Natural
 Mahogany back and sides
 Mahogany neck
 Shallow body
 Rosewood fingerboard and bridge
 15:1 die-cast chrome tuners
 Equis II preamplification system

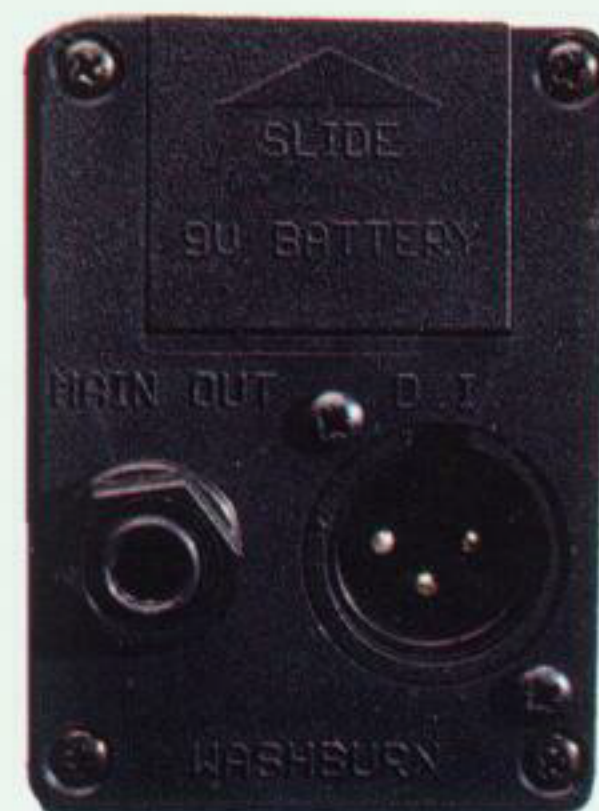
GREG ALLMAN
 of The Allman Brothers
 EA2012 Black

THE FINEST ACOUSTIC PREAMP SYSTEM
EQUIS II™

Washburn is a dominant force in the specialized field of electric-acoustic instruments with more than 20 years of experience. The EQUIS II™ preamp system represents a major breakthrough in electric-acoustic guitar technology. Never before has any system been so well thought out for not only the performing or studio musician, but for the engineer, as well.

EQUIS II features noiseless gain with combined, variable and fixed frequency equalization. What sets EQUIS II apart from all other systems is its choice of outputs. EQUIS II is equipped with a conventional 1/4 inch output jack controlled by the on-board EQ. An XLR output allows the guitar to send a completely independent, pre-EQ signal directly to a mixing console without the need for an external direct box.

The state of the art Equis II system boasts a battery life of over 1000 hours, up to ten times longer than other systems. The degree of accuracy with which these instruments reproduce their acoustic tones when amplified clearly establishes Washburn as the leader in electric-acoustic guitars.



Dual output jacks and 9V battery compartment

EQUIS II
 Volume, Mid range "Contour"
 and 3 -Band EQ controls

PHOTO: GLEN LaFERMAN

MANDOLINS

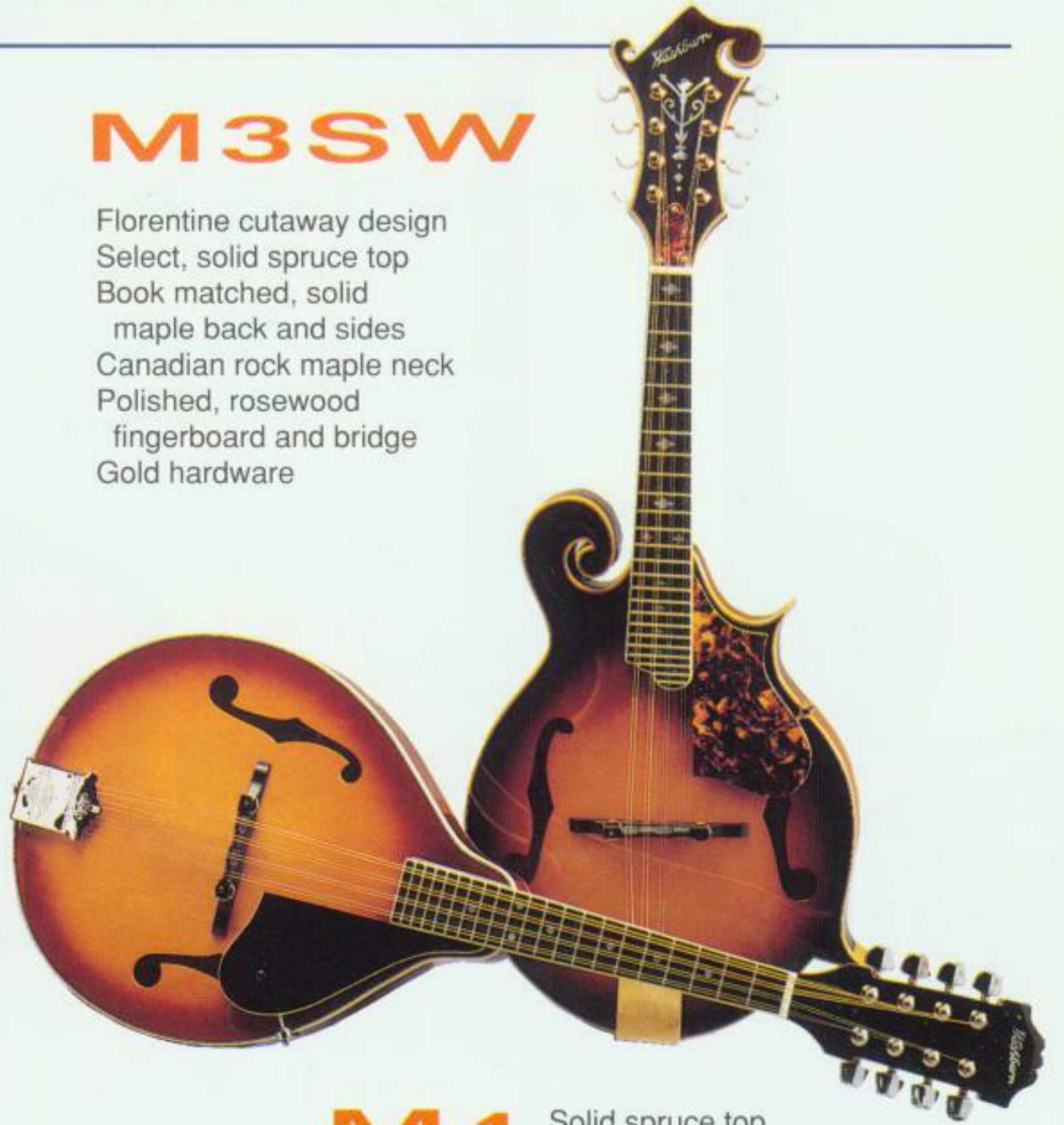
M5SW

Florentine cutaway design
Solid wood construction
Carved, select, solid spruce top
Book matched, flamed maple back and sides
Canadian rock maple neck
Ebony fingerboard with intricate inlay
Rosewood bridge
Completely hand crafted
Gold hardware



M3SW

Florentine cutaway design
Select, solid spruce top
Book matched, solid maple back and sides
Canadian rock maple neck
Polished, rosewood fingerboard and bridge
Gold hardware



M 1 Solid spruce top
Maple back and sides
Rock maple neck
Polished, rosewood fingerboard and bridge
Chrome hardware

BANJOS

SINCE 1876



B 16 Book matched, flamed maple resonator
Five piece, Canadian rock maple and rosewood neck
Tube and flange construction
Rock maple rim / Special alloy tone ring
Permanently sealed, lubricated, planetary tuning pegs
Geared 5th string tuner
Kirshner style tailpiece
Engraved armrest / Chrome hardware

B9

Mahogany resonator
Solid mahogany neck
Geared tuning pegs
Tension tailpiece
Chrome hardware
Remo head

