



ESP®



40TH
1975-2015
ANNIVERSARY

2015

PRODUCT PREVIEW



ESP *Original*

ESP *Signature Series*

ESP USA

ESP E-II

Ltd

TOMBSTONE

2015 PRODUCT PREVIEW

► ESP CUSTOM SHOP 2

► ESP EXHIBITION SERIES . . . 4

► ESP ORIGINAL SERIES . . . 6-9

ECLIPSE CTM	6
HORIZON CTM	6
FRX	7
FRX CTM	7
MYSTIQUE CTM	8
MYSTIQUE FR	8
STREAM	9
STREAM CTM	9

► ESP USA SERIES 10-13

USA ECLIPSE	11
USA HORIZON-II	12
USA M-III	13

► 40TH ANNIV. SERIES . . . 14-15

► SIGNATURE SERIES

JAMES HETFIELD	16
KIRK HAMMETT	16
GARY HOLT	17
ALEX SKOLNICK	17
ALEXI LAIHO	18
STEPHEN CARPENTER	18
RON WOOD	18
GEORGE LYNCH	19
JEFF HANNEMAN	19
WILL ADLER	19
NERGAL	20
JAVIER REYES	20
MAX CAVALERA	20
RICHARD Z. KRUSPE	21
ANDY JAMES	21
MICHAEL WILTON	21
ROB CAGGIANO	22
KEN SUSI	22
BUZ MCGRATH	22
BEN WEINMAN	23
MICHAEL PAGET	23
GUS G	23
BEN SAVAGE	24
ALEX WADE	24
ZACH HOUSEHOLDER	24
GABE CRISP	24
ELIAS VILJANEN	25
JESSE LIU	25
DORIS YEH	25
BUNNY BRUNEL	26
TOM ARAYA	26
FRANK BELLO	26
FRED LECLERCQ	27
TOMMY STINSON	27
PANCHO TOMASELLI	27

► ESP E-II SERIES

E-II ECLIPSE	28
E-II HORIZON	28
E-II HORIZON-III	29
E-II FRX	29
E-II HRF	29
E-II MYSTIQUE	30
E-II ST-1	30
E-II ST-2	30
E-II ARROW	31
E-II M-I	31
E-II M-II	31
E-II TE-7	32
E-II VINTAGE PLUS	32
E-II VINTAGE-4	32
E-II J-4/J-5	33
E-II AP-4/AP-5	33
E-II STREAM	33

► LTD SERIES

ARROW	34
AX	34
EC	34
EX	35
F	35
FRX	35
H	36
M	36
MH	36
ST	37
TE	37
TL	37
V	38
VIPER	38
XTONE	38
AX	39
B	39
D	39
EC	40
F	40
J	40
RB	41
STREAM	41
VINTAGE	41

► TOMBSTONE ACOUSTICS

A-300E	42
A-430E	42
D-320E	42
D-430E	42
GL-J2E	43
J-310E	43
J-430E	43
JB-320E	43

INNOVATION
40 YEARS
 INSPIRATION



Photo by Jeff Yeager

ESP
 1975 | 2015



ESP | 40TH ANNIVERSARY

EXHIBITION LIMITED

The 2015 Exhibition Limited Anniversary project consists of approximately 80 unique custom guitars & basses, each one both a work of art and a high performance instrument. Incorporating the world's finest materials, intricate inlays, hand carving and custom finishes, each model is hand crafted by master luthiers at the ESP Custom Shop in Tokyo. While custom shop designs are usually specified by the people who order them, these special exhibition models have been designed by the master luthiers themselves in commemoration of ESP's 40 years of guitar craftsmanship.

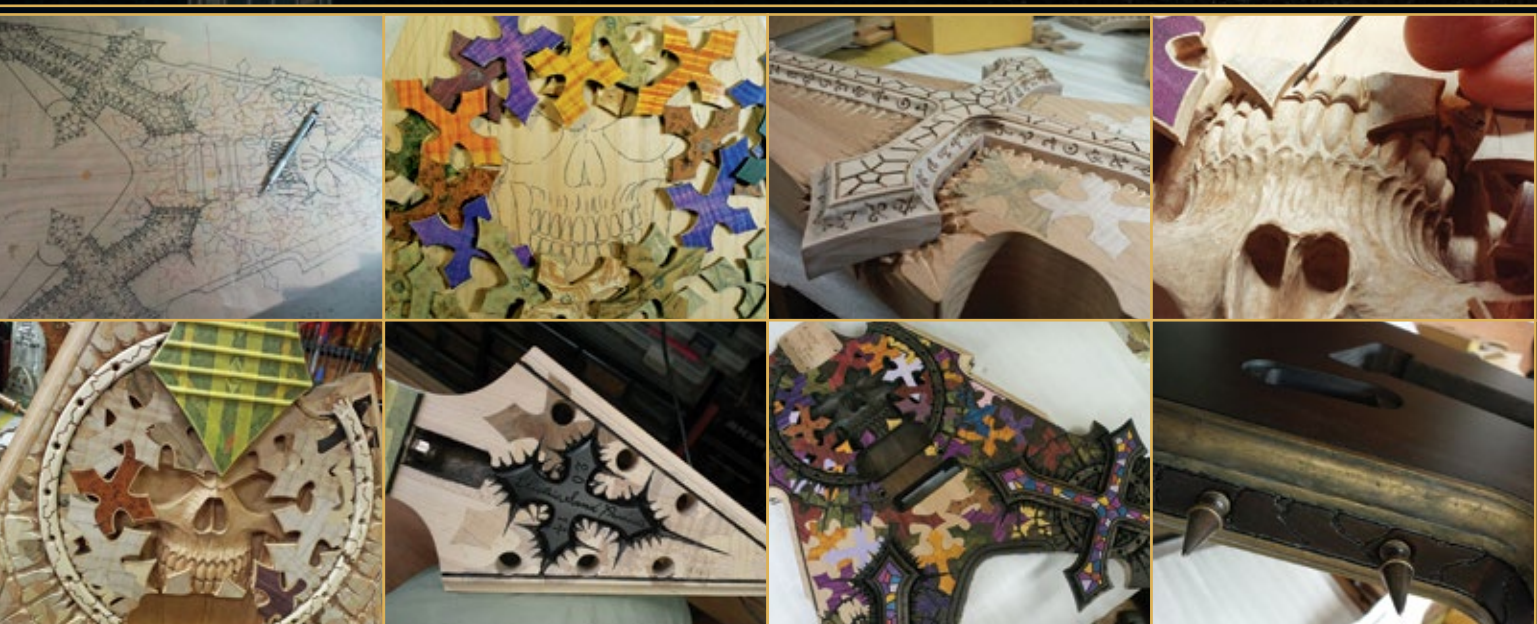
SEE MORE AT ESPGUITARS.COM

Custom Shop



It's your vision, from the body shape, to the feel of the neck, the graphics, the inlays, the hardware, the materials, and more, limited only by your creativity. It can be as simple as making subtle changes to one of our existing ESP models, or as complex as creating a brand new design that exists only in your imagination. With access to the world's most respected and experienced luthiers, ESP can literally turn your dreams into reality.

The ESP Guitar Company wants to give you everything you need to make personalizing a custom guitar fast and easy. Just visit espguitars.com and go to the Custom Shop page. You can download the custom order form and choose from every imaginable combination of guitar design options. Then submit the order form to any authorized ESP dealer for a price quote.



RINNE
"TRANSMIGRATION"



ECLIPSE CTM GUITARS

SPECIFICATIONS

- Set-Neck Construction
- 24.75" Scale
- Mahogany Body
- Quilted Maple Top
- Maple Neck
- Ebony Fingerboard
- 42mm Graphite Nut
- Thin U Neck Contour
- Gotoh Locking Tuners
- Schaller Strap Locks
- TonePros T.O.M Bridge & Tailpiece
- EMG 81 (B) & 60 (N) Active p.u.
- Finish: Reindeer Blue, See-Thru Black Sunburst



FRX CTM GUITARS

SPECIFICATIONS

- Set-Thru Construction
- 25.5" Scale
- Mahogany Body
- Quilted Maple Top
- Maple Neck
- Glow In The Dark Side Dots
- Ebony Fingerboard
- 42mm Locking Nut
- Thin U Neck Contour
- Gotoh Locking Tuners
- Schaller Strap Locks
- Floyd Rose Original Bridge
- Seymour Duncan TB-6 (B) & SH-1 (N) p.u.
- Finish: See Thru Black Sunburst, See Thru Black Cherry Sunburst



HORIZON CTM FR GUITARS

SPECIFICATIONS

- Set-Thru Construction
- 25.5" Scale
- Mahogany Body
- Quilted Maple Top
- Maple Neck
- Mother of Pearl Side Dots
- Ebony Fingerboard
- 42mm Locking Nut
- Thin U Neck Contour
- Gotoh Locking Tuners
- Schaller Strap Locks
- Floyd Rose Original Bridge
- Seymour Duncan TB-14 (B) & SH-2 (N) p.u.
- Finish: Faded Sky Blue



HORIZON CTM NT GUITARS

SPECIFICATIONS

- Set-Thru Construction
- 25.5" Scale
- Mahogany Body
- Flamed Maple Top
- Maple Neck
- Mother of Pearl Side Dots
- Ebony Fingerboard
- 42mm Bone Nut
- Thin U Neck Contour
- Gotoh Locking Tuners
- Schaller Strap Locks
- Gotoh T.O.M. Bridge & Tailpiece
- Seymour Duncan SH-16 (B) & SH-2 (N) p.u.
- Finish: Antique Brown Sunburst



FRX GUITARS

SPECIFICATIONS

- Set-Thru Construction
- 25.5" Scale
- Alder Body
- Maple Neck
- Glow In The Dark Side Dots
- Ebony Fingerboard
- 42mm Locking Nut
- Thin U Neck Contour
- Gotoh Locking Tuners
- Schaller Strap Locks
- Floyd Rose Original Bridge
- Seymour Duncan TB-6 (B) & SH-1 (N) p.u.
- Finish: Black, Liquid Metal Silver



Marine Blue



See Thru Black Cherry



Tea Sunburst

MYSTIQUE CTM GUITARS

SPECIFICATIONS

- Set-Neck Construction
- 25.5" Scale
- Mahogany Body
- Flamed Maple Top
- Mahogany Neck
- Mother of Pearl Side Dots
- Rosewood Fingerboard
- 42mm Bone Nut
- Thin U Neck Contour
- Gotoh Locking Tuners
- Schaller Strap Locks
- Gotoh T.O.M Bridge & Tailpiece
- Seymour Duncan SH-4 (B) & APH-1 (N) p.u.
- Finish: Marine Blue, See Thru Black Cherry, Tea Sunburst



MYSTIQUE FR GUITARS

SPECIFICATIONS

- Set-Neck Construction
- 25.5" Scale
- Mahogany Body
- Maple Top
- Maple Neck
- Ebony Fingerboard
- 42mm Locking Nut
- Thin U Neck Contour
- Gotoh Locking Tuners
- Schaller Strap Locks
- Floyd Rose Original Bridge
- Seymour Duncan TB-14 (B) & SH-1 (N) p.u.
- Finish: Black



See Thru Black Cherry

STREAM CTM BASSES



Marine Blue

SPECIFICATIONS

- Bolt-On Neck Construction
- 34" Scale
- White Ash Body
- Flamed Maple Top
- Maple/Walnut/Padauk 7-piece Neck
- Glow In The Dark Side Dots
- Rosewood Fingerboard
- 38mm Bone Nut
- Thin U Neck Contour
- Hipshot Tuners
- Schaller Strap Locks
- Hipshot Bridge
- EMG 35J (B) & 35P4 (N) Active p.u.
- BTC 2-Band EQ w/ On-Off Mini Switch
- Finish: Marine Blue, See Thru Black Cherry



Black

STREAM BASSES



2 Tone Burst

SPECIFICATIONS

- Bolt-On Neck Construction
- 34" Scale
- White Ash Body
- Maple/Walnut/Padauk 7-piece Neck
- Glow In The Dark Side Dots
- Rosewood Fingerboard
- 38mm Bone Nut
- Thin U Neck Contour
- Hipshot Tuners
- Schaller Strap Locks
- Hipshot Bridge
- EMG 35J (B) & 35P4 (N) Active p.u.
- BTC 2-Band EQ w/ On-Off Mini Switch
- Finish: Black, 2 Tone Burst



See Thru Black Sunburst
EMG

Vintage Natural
EMG

Sapphire Black Metallic
EMG

Copper Sunburst
Seymour Duncan

Tea Sunburst
Seymour Duncan

Sapphire Black Metallic
Seymour Duncan

NEW

NEW

NEW

NEW

NEW

See Thru Black Sunburst
Seymour Duncan

Vintage Natural
Seymour Duncan

Sapphire Black Metallic
Seymour Duncan

Copper Sunburst
EMG

Tea Sunburst
EMG

Sapphire Black Metallic
EMG



Available in EMG or Seymour Duncan pickup configurations

Available in EMG or Seymour Duncan pickup configurations

Available in EMG or Seymour Duncan pickup configurations

Available in EMG or Seymour Duncan pickup configurations

Available in EMG or Seymour Duncan pickup configurations

Available in EMG or Seymour Duncan pickup configurations

USA HORIZON-II QM

SPECIFICATIONS

- Set-Thru Construction
- 25.5" Scale
- Mahogany Body
- Quilted Maple Top
- Maple Neck
- Ebony Fingerboard
- 42mm Graphite Nut
- Thin U Neck Contour
- Sperzel Locking Tuners
- Schaller Strap Locks
- TonePros Locking T.O.M Bridge
- EMG Metalworks 57 (B) & 66 (N) Active p.u. or Seymour Duncan SH-16 (B) & SH-2 (N) p.u.
- Finish: See Thru Black Sunburst, Vintage Natural

USA HORIZON-II

SPECIFICATIONS

- Set-Thru Construction
- 25.5" Scale
- Mahogany Body
- Maple Top
- Maple Neck
- Ebony Fingerboard
- 42mm Graphite Nut
- Thin U Neck Contour
- Sperzel Locking Tuners
- Schaller Strap Locks
- TonePros Locking T.O.M Bridge
- EMG Metalworks 57 (B) & 66 (N) Active p.u. or Seymour Duncan SH-16 (B) & SH-2 (N) p.u.
- Finish: Sapphire Black Metallic

USA M-III FM

SPECIFICATIONS

- Bolt-On Construction
- 25.5" Scale
- Alder Body
- Flamed Maple Top
- Maple Neck
- Ebony Fingerboard
- 43mm Locking Nut
- Extra Thin U Neck Contour
- Sperzel Standard Tuners
- Schaller Strap Locks
- Floyd Rose Original Bridge
- Seymour Duncan Custom Shop '78 (B) & STK-S4 (M & N) p.u. or EMG X-Series 81X (B) & SA-X (M & N) Active p.u.
- Finish: Copper Sunburst, Tea Sunburst

USA M-III

SPECIFICATIONS

- Bolt-On Construction
- 25.5" Scale
- Alder Body
- Maple Neck
- Ebony Fingerboard
- 43mm Locking Nut
- Extra Thin U Neck Contour
- Sperzel Standard Tuners
- Schaller Strap Locks
- Floyd Rose Original Bridge
- Seymour Duncan Custom Shop '78 (B) & STK-S4 (M & N) p.u. or EMG X-Series 81X (B) & SA-X (M & N) Active p.u.
- Finish: Sapphire Black Metallic

40TH ANNIVERSARY SERIES

In 1975, a small musical instrument shop called Electric Sound Products opened in Tokyo, Japan. In the back of the store was a small area for making custom replacement parts for guitars and basses. With that humble beginning, who could have imagined that over the subsequent four decades, ESP would grow into one of the world's leading instrument manufacturers? Today, ESP's Custom Shop, Original, E-II, Signature and LTD brands make guitars and basses for every style of music, and are available in more than 100 countries. For our 40th anniversary in 2015, we've created a selection of very special limited-edition guitars to commemorate this important milestone in our history.

ESP
CUSTOM
SHOP



Tiger Eye

See Thru Black Sunburst

ESP ECLIPSE 40TH

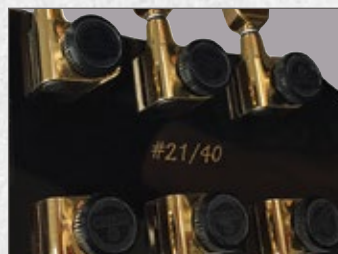
NEW

SPECIFICATIONS

- Set-Thru Construction
- 24.75" Scale
- Mahogany Body
- Flamed Maple Top
- Maple Neck
- Glow in the Dark Side Dots
- Thin U Neck Shape
- 22 XJ Frets
- Seymour Duncan APH-1 (N/B) p.u. (Tiger Eye)
- EMG MetalWorks 57 (B) & 66 (N) Active p.u. (See Thru Black Sunburst)
- Ebony Fingerboard
- 42mm Graphite Nut
- Tonepros Locking TOM Bridge & Gotoh Tailpiece
- Schaller Strap Locks
- Gotoh Locking Tuners
- Finish: Tiger Eye, See Thru Black Sunburst



40th Anniversary Logo on Headstock



Limited Edition Numbering on Back of Headstock



40th Anniversary Premium Hardshell Case

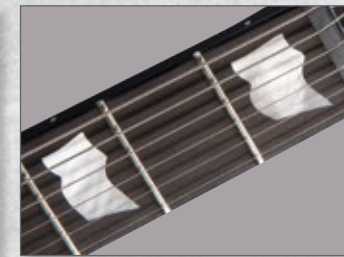


Certificate of Authenticity

VISIT ESPGUITARS.COM TO SEE THE COMPLETE LINE.



EMG MetalWorks Pickups



Real Mother of Pearl Inlays



40th Anniversary Hardshell Case



Certificate of Authenticity



EC-2015

NEW

SPECIFICATIONS

- Set-Neck Construction
- 24.75" Scale
- Mahogany Body
- Mahogany Neck
- Ebony Fingerboard
- 42mm Standard Nut
- Thin U Neck Shape
- Black Hardware
- 24 XJ Frets
- EMG MetalWorks 57 (B) & 66 (N) Active p.u.
- Tonepros Locking TOM Bridge & Tailpiece
- Finish: See Thru Black Satin

LTD



MH-2015

NEW

SPECIFICATIONS

- Set-Thru Construction
- 25.5" Scale
- Mahogany Body
- Maple Neck
- Ebony Fingerboard
- 42mm Standard Nut
- Thin U Neck Shape
- Black Hardware
- 24 XJ Frets
- EMG MetalWorks 57 (B) & 66 (N) Active p.u.
- Tonepros Locking TOM Bridge w/String-Thru body
- Finish: See Thru Black Satin

LTD



H7-2015

NEW

SPECIFICATIONS

- Set-Thru Construction
- 25.5" Scale
- Mahogany Body
- Maple Neck
- Ebony Fingerboard
- 48mm Standard Nut
- Thin U Neck Shape
- Black Hardware
- 24 XJ Frets
- EMG MetalWorks 57-7H (B) & 66-7H (N) Active p.u.
- Tonepros Locking TOM Bridge w/String-Thru body
- Finish: See Thru Black Satin

LTD

40TH ANNIVERSARY SERIES

JAMES HETFIELD

AVAILABLE MODELS

- SNAKEBYTE Black
- SNAKEBYTE Snow White
- LTD SNAKEBYTE Black
- LTD SNAKEBYTE Snow White
- TRUCKSTER Black Satin
- LTD TRUCKSTER Black Satin
- IRON CROSS Snow White
- LTD IRON CROSS Snow White



METALLICA

ESP IRON CROSS Snow White

GARY HOLT

NEW

AVAILABLE MODELS

- GARY HOLT EC Liquid Metal Lava
- LTD GH-600 Black
- LTD GH-200 Black



EXODUS

SLAYER

GARY HOLT EC Liquid Metal Lava

KIRK HAMMETT

AVAILABLE MODELS

- KH-2 VINTAGE Black
- KH-2 Black
- LTD KH-602 Black
- LTD KH-JR Black
- LTD KH-202 Black
- KH-DC See Thru Black
- KH-DC See Thru Black Cherry
- LTD KH-DC See Thru Black Cherry
- LTD KH-WZ Black/Graphic



METALLICA

KH-2 VINTAGE Black

ALEX SKOLNICK

AVAILABLE MODELS

- ALEX SKOLNICK Silver Sunburst
- LTD AS-1 Silver Sunburst
- LTD AS-1FM Lemon Burst



TESTAMENT

ALEX SKOLNICK Silver Sunburst

ALEXI-GREENY Black

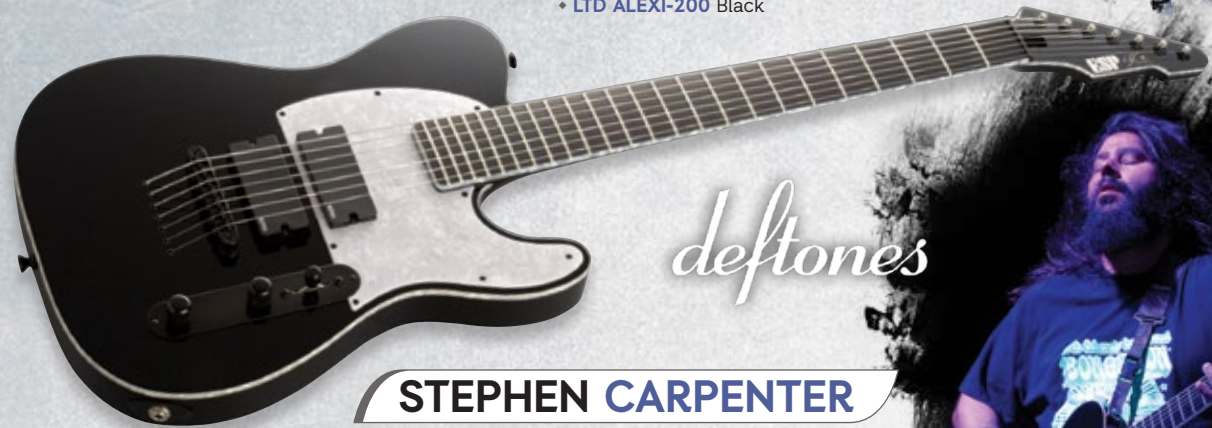


Children
Of Bodom

ALEXI LAIHO

AVAILABLE MODELS

- ALEXI-GREENY Black/Graphic
- LTD ALEXI-600-GREENY Black/Graphic
- LTD ALEXI-600-SCYTHE White
- LTD ALEXI-200 Black



deftones

STEPHEN CARPENTER

AVAILABLE MODELS

- STEF-B8 Black
- LTD SC-608B Black
- LTD SC-208 Black
- STEF-B7 Black
- LTD SC-607B Black
- LTD SC-207 Black
- STEF-T7B Black
- LTD SCT-607B Black

STEF-T7B Black



RON WOOD

AVAILABLE MODELS

- RON WOOD Black
- LTD RON WOOD 3 Tone Burst
- RON WOOD Fiesta Red
- LTD RON WOOD Black
- RON WOOD 3 Tone Burst

RON WOOD 3 Tone Burst



LYNCH MOB

GEORGE LYNCH

AVAILABLE MODELS

- SKULLS & SNAKES
- M-1 TIGER
- LTD GL-200K
- SB TIGER
- KAMIKAZE-1
- LTD GL-256

KAMIKAZE-1



SLAYER

JEFF HANNEMAN

AVAILABLE MODELS

- JEFF HANNEMAN Black
- LTD JH-600 Black
- JEFF HANNEMAN Urban Camo
- LTD JH-600EC Black
- JEFF HANNEMAN EC Black

JEFF HANNEMAN Urban Camo



lamb
of god

WILL ADLER

AVAILABLE MODELS

- WARBIRD DISTRESSED Black/Graphic
- WA-WARBIRD Black/Graphic
- LTD WA-200 WARBIRD DISTRESSED Black/Graphic
- LTD WA-200 White Camo

WARBIRD DISTRESSED Black/Graphic



hehemoth

NERGAL

AVAILABLE MODELS

- LTD HEX-7 Black Satin w/Graphic

RAMMSTEIN

RICHARD Z. KRUSPE

AVAILABLE MODELS

- RZK-II BURNT

ANIMALS AS LEADERS

JAVIER REYES NEW

AVAILABLE MODELS

- LTD JR-608 Faded Blue Sunburst
- LTD JR-208 Black

ANDY JAMES NEW

AVAILABLE MODELS

- LTD AJ-1 Black Satin
- LTD AJ-7 Black Satin

SOULFLY **III**

MAX CAVALERA

AVAILABLE MODELS

- MAX CAVALERA EX Urban Camo
- LTD MAX-200 Snow White

Queensrÿche

MICHAEL WILTON

AVAILABLE MODELS

- LTD MW-SKULL Black/Graphic

▶ SIGNATURE SERIES

GUITARS & BASSES

VOLBEAT

ROB CAGGIANO

ROB CAGGIANO See Thru Purple

AVAILABLE MODELS

- ROB CAGGIANO See Thru Purple
- LTD RC-600 See Thru Purple

THE DILLINGER ESC PLAN

BEN WEINMAN

AVAILABLE MODELS

- LTD BW-1 FM/ET See Thru Black

UNEARTH

KEN SUSI

NEW

AVAILABLE MODELS

- LTD KS-7 QM/ET Dark Brown Sunburst

BULLET FOR MY VALENTINE

MICHAEL PAGET

MICHAEL PAGET V Black/Graphic

AVAILABLE MODELS

- MICHAEL PAGET V Black/Graphic
- LTD MP-200 Black/Graphic

UNEARTH

BUZ MCGRATH

AVAILABLE MODELS

- LTD BUZ-7 Snow White Sunburst

GZZY & BOURNE

GUS G

NEW

GUS RS Black Satin

AVAILABLE MODELS

- GUS RS Black Satin
- LTD GUS-200EC Black Satin
- GUS EC Black Satin
- LTD GUS-200 Black Satin

FIREWIND

► SIGNATURE SERIES



WHITECHAPEL

BEN SAVAGE

AVAILABLE MODELS

- LTD BS-7 See Thru Black



WHITECHAPEL

ALEX WADE

AVAILABLE MODELS

- LTD AW-7 Blood Red Sunburst



WHITECHAPEL

ZACH HOUSEHOLDER

AVAILABLE MODELS

- LTD ZH-7 See Thru Black Satin



NEW

WHITECHAPEL

GABE CRISP

AVAILABLE MODELS

- LTD GC-P4 Black



SONATA ARCTICA

ELIAS VILJANEN

AVAILABLE MODELS

- E-II EV-7 Black



CHTHONIC

JESSE LIU

AVAILABLE MODELS

- E-II JL-7 Silver Sunburst



CHTHONIC

DORIS YEH

AVAILABLE MODELS

- E-II DY-5 Purple Silver Sunburst



SIGNATURE SERIES

BUNNY BRUNEL NEW

LTD BB-1005QM/FL Burnt Orange

AVAILABLE MODELS

- *LTD BB-1004QM* See Thru Black Sunburst
- *LTD BB-1005QM/FL* Burnt Orange

Photo By Arun Nevader

FRANK BELLO NEW

FRANK BELLO Black Satin

AVAILABLE MODELS

- *FRANK BELLO* Black Satin
- *LTD FB-204* Black Satin
- *LTD FB-4* Black Satin
- *LTD FB-208* Black Satin

TOM ARAYA

TOM ARAYA Black

AVAILABLE MODELS

- *TOM ARAYA* Black
- *LTD TA-204* Black
- *LTD TA-600* Black

FRED LECLERCQ

LTD FL-204 Snow White Satin w/Graphic

AVAILABLE MODELS

- *LTD FL-204* Snow White Satin w/Graphic

PANCHO TOMASELLI NEW

LTD PT-4 Black Aqua

AVAILABLE MODELS

- *LTD PT-4* Black Aqua

TOMMY STINSON

TOMMY STINSON-4 Distressed Vintage White

AVAILABLE MODELS

- *TOMMY STINSON-4* Distressed Vintage White
- *LTD TS-4* Distressed Vintage White

▶ SIGNATURE SERIES



Built in Japan by ESP's luthiers, the ESP E-II Series represents a new standard in high-quality guitars and basses. ESP E-II bridges the gap between our ESP Original Series and LTD models, with great looks, sound, and craftsmanship.



E-II ECLIPSE GUITARS

ESP's classic single cutaway design is available with EMG and Seymour Duncan pickups, Gotoh locking tuners, TonePros locking bridges, figured tops and solid colors.

AVAILABLE MODELS

- **ECLIPSE FM/EMG** See Thru Black
- **ECLIPSE FM/SD** Tobacco Sunburst
- **ECLIPSE FM/SD** Cherry Sunburst
- **ECLIPSE FM/SD** Vintage Honey Burst
- **ECLIPSE QM** Dark Brown Sunburst
- **ECLIPSE QM** See Thru Black Cherry Sunburst
- **ECLIPSE QM** Marine Blue
- **ECLIPSE DB** Vintage Black
- **ECLIPSE-7** Black Satin

ECLIPSE QM See Thru Black Cherry Sunburst



E-II HORIZON GUITARS

An original ESP design, the E-II Horizon is available with assorted woods and finishes, Seymour Duncan and EMG pickups, and 6 and 7-string Original Floyd Rose and string-thru body designs.

AVAILABLE MODELS

- **HORIZON FR** Black
- **HORIZON FR-7** Black
- **HORIZON NT-7B** Black Satin
- **HORIZON QM/FR** Reindeer Blue
- **HORIZON FM/NT** Dark Brown Sunburst

HORIZON FM/NT Dark Brown Sunburst



E-II HORIZON-III GUITARS

This unique double cutaway design is available with Seymour Duncans in both Original Floyd Rose and string-thru-body configuration.

AVAILABLE MODELS

- **HORIZON-III FM** Reindeer Blue
- **HORIZON-III FM/FR** See Thru Black

HORIZON-III FM Reindeer Blue



E-II FRX GUITARS

The carved and contoured FRX is available with figured tops and solid colors, EMG pickups, ebony fingerboards and Original Floyd Rose bridges.

AVAILABLE MODELS

- **FRX** Black
- **FRX FM** See Thru Black Sunburst
- **FRX** Snow White
- **FRX FM** Reindeer Blue

FRX Snow White



E-II HRF GUITARS

The HRF 8-string neck-thru-body comes with Seymour Duncan active pickups, an ebony fingerboard and a Hipshot bridge.

AVAILABLE MODELS

- **HRF NT-8B** Black



MYSTIQUE QM/NT Marine Blue

E-II MYSTIQUE GUITARS

With its unique body and headstock design, the E-II Mystique is available with quilted maple tops in a non-tremolo version, and solid black with an Original Floyd Rose bridge.

AVAILABLE MODELS

- ♦ **MYSTIQUE FR** Black
- ♦ **MYSTIQUE QM/NT** Marine Blue
- ♦ **MYSTIQUE QM/NT** See Thru Black Cherry



E-II ARROW GUITARS **NEW**

A bold, aggressive shape with neck-thru-body construction, the E-II Arrow features EMG pickups, an ebony fingerboard, and Floyd Rose Original bridge.

AVAILABLE MODELS

- ♦ **ARROW** Black



ST-1 QM ROSEWOOD/EMG See Thru Black

E-II ST-1 GUITARS

The ST-1 bolt-on comes with an Original Floyd Rose, Seymour Duncan or EMG pickups, 24 frets and a quilted maple top.

AVAILABLE MODELS

- ♦ **ST-1 QM MAPLE/SD** Aqua Marine
- ♦ **ST-1 QM MAPLE/SD** See Thru Black Cherry
- ♦ **ST-1 QM ROSEWOOD/EMG** See Thru Black



E-II M-I GUITARS

ESP's popular neck-thru body M-shape is available with one EMG pickup and String-Thru-Body bridge.

AVAILABLE MODELS

- ♦ **M-I THRU NT** Black Satin



ST-2 QM MAPLE Tiger Eye

E-II ST-2 GUITARS **NEW**

The ST-2 bolt-on features an Original Floyd Rose, custom wound direct mount DiMarzio pickups, 22 frets, and a choice of four see-thru finishes with quilted maple tops.

AVAILABLE MODELS

- ♦ **ST-2 QM MAPLE** Tiger Eye
- ♦ **ST-2 QM MAPLE** See Thru Black
- ♦ **ST-2 QM ROSEWOOD** Reindeer Blue
- ♦ **ST-2 QM ROSEWOOD** Emerald Green



M-II Amber Cherry Sunburst

E-II M-II GUITARS

The E-II M-II is available with two EMG pickups, an Original Floyd Rose bridge and a choice of two see-thru finishes with flamed maple tops.

AVAILABLE MODELS

- ♦ **M-II** Amber Cherry Sunburst
- ♦ **M-II** See Thru Black



TE-7 Snow White

E-II TE-7 GUITARS

A high-performance update on a classic design, the E-II TE-7 is a 7-string guitar with neck-thru construction, a rosewood fingerboard with 24 frets, Gotoh locking tuners and EMG 81-7 pickups.

AVAILABLE MODELS

- TE-7 Snow White
- TE-7 Black



J-4 QM MAPLE Amber

E-II J-4 / J-5 BASSES

ESP E-II's new J-4 and J-5 feature a quilted maple top, a chambered ash body, and a maple neck with maple fingerboard. Features also include a Seymour Duncan pickup set and ESP's KH-1 active 2-band EQ.

AVAILABLE MODELS

- J-4 QM MAPLE Amber
- J-5 QM ROSEWOOD Amber
- J-4 QM MAPLE See Thru Black
- J-5 QM ROSEWOOD See Thru Black



VINTAGE PLUS ROSEWOOD 3 Tone Burst

E-II VINTAGE PLUS GUITARS

Available in two finish and fingerboard choices, the bolt-on, 3 single coil E-II Vintage Plus models also feature Seymour Duncan pickups, a Wilkinson bridge, and Gotoh locking tuners.

AVAILABLE MODELS

- VINTAGE PLUS ROSEWOOD 3 Tone Burst
- VINTAGE PLUS MAPLE Black



AP-5 See Thru White

E-II AP-4 / AP-5 BASSES

Available in 4 and 5 string, AP-4/5 models are bolt-on basses with Seymour Duncan pickups and active tone circuits, Gotoh tuners and bridges, white ash bodies and rosewood fingerboards.

AVAILABLE MODELS

- AP-4 See Thru White
- AP-5 See Thru White
- AP-4 See Thru Black
- AP-5 See Thru Black
- AP-4 Tobacco Sunburst
- AP-5 Tobacco Sunburst



VINTAGE-4 PJ MAPLE Black

E-II VINTAGE-4 BASSES

The E-II Vintage-4 is a classic bolt-on design, available with maple or rosewood fingerboards, 21 XJ frets, Gotoh tuners, and a Seymour Duncan pickup set.

AVAILABLE MODELS

- VINTAGE-4 PJ ROSEWOOD 3 Tone Burst
- VINTAGE-4 PJ MAPLE Black



STREAM FM See Thru Black

E-II STREAM BASSES

The E-II Stream is a unique ESP design, featuring a white ash body, rosewood fingerboard, Gotoh tuners, a Hipshot bridge, and EMG active pickups. It is available with a flame maple top or in solid colors.

AVAILABLE MODELS

- STREAM Black
- STREAM FM See Thru Black
- STREAM Snow White



ARROW GUITARS **NEW**

AVAILABLE MODELS

- **ARROW-401** Black



EX SERIES GUITARS

AVAILABLE MODELS

- **EX-360** Snow White
- **EX-50** Snow White
- **EX-360** Black
- **EX-50** Black

EX-360 Snow White



AX GUITARS

AVAILABLE MODELS

- **AX-50** Black Satin



F SERIES GUITARS

AVAILABLE MODELS

- **F-50** Black Cherry
- **F-10 KIT** Black
- **F-50** Black
- **F-JR** Black

F-50 Black Cherry



NEW

EC SERIES GUITARS

AVAILABLE MODELS Visit espguitars.com for all available finishes

- | | | |
|-----------------------|-----------------------|--------------------|
| • EC-1000 | • EC-401 | • EC-331FR |
| • EC-1000S | • EC-401B | • EC-256 |
| • EC-1000ET | • EC-401FM | • EC-200 |
| • EC-1000FR | • EC-401V DMZ | • EC-200QM |
| • EC-1000FM | • EC-401VF DMZ | • EC-100QM |
| • EC-1000QM | • EC-407 | • EC-50 |
| • EC-1000T/CTM | • EC-407B/FM | • EC-10 KIT |
| • EC-1001FR | • EC-331 | • EC-JR KIT |

EC-1001FR See Thru Black



FRX SERIES GUITARS **NEW**

AVAILABLE MODELS

- **FRX-401** Black
- **FRX-407** Black
- **FRX-401** Snow White
- **FRX-407** Snow White

FRX-401 Black



NEW

H-1001FR Snow White

H SERIES GUITARS

AVAILABLE MODELS

- ♦ H-1001FM See Thru Black Cherry
- ♦ H-1001FR Snow White
- ♦ H-1007 See Thru Black
- ♦ H-1007FR See Thru Black
- ♦ H-408B/FM See Thru Black Sunburst
- ♦ H-308 Black Satin
- ♦ H-208 Black
- ♦ H-351NT See Thru Black Cherry
- ♦ H-351NT See Thru Black
- ♦ H-101FM Amber Sunburst
- ♦ H-51 Electric Blue

ST-213 ROSEWOOD Seafoam Green



ST SERIES GUITARS

AVAILABLE MODELS

- ♦ ST-213 ASH/ROSEWOOD Natural Gloss
- ♦ ST-213FR MAPLE Black
- ♦ ST-213 MAPLE Candy Apple Red
- ♦ ST-213 MAPLE Olympic White
- ♦ ST-213 ROSEWOOD Seafoam Green
- ♦ ST-213 ROSEWOOD 3 Tone Burst
- ♦ ST-203 ROSEWOOD 3 Tone Burst



NEW

M-1001SE Vintage Natural Satin

M SERIES GUITARS

AVAILABLE MODELS

- ♦ M-1001 See Thru Black
- ♦ M-1001SE Vintage Natural Satin
- ♦ M-1000E Snow White
- ♦ M-1000 See Thru Black
- ♦ M-330FR Black
- ♦ M-200 Black Desert Camo
- ♦ M-103FM See Thru Black
- ♦ M-100FM See Thru Black
- ♦ M-100FM See Thru Black Cherry
- ♦ M-50 Black Satin
- ♦ M-50FR Black
- ♦ M-17 Black
- ♦ M-10 KIT Black
- ♦ M-10FR KIT Black

TE-406FM Dark Brown Sunburst Satin



NEW

TE SERIES GUITARS

AVAILABLE MODELS

- ♦ TE-202 ROSEWOOD 3 Tone Burst
- ♦ TE-212 MAPLE Black
- ♦ TE-212 MAPLE Candy Apple Red
- ♦ TE-406FM Dark Brown Sunburst Satin
- ♦ TE-406 Black Satin
- ♦ TE-406 Snow White Satin
- ♦ TE-407 Black Satin
- ♦ TE-407 Snow White Satin



NEW

MH-1001FR See Thru Black

MH SERIES GUITARS

AVAILABLE MODELS

- ♦ MH-1000 FR/EMG See Thru Black
- ♦ MH-1000ET Black
- ♦ MH-1000NT DUNCAN See Thru Blue
- ♦ MH-1001FR See Thru Black
- ♦ MH-1001NT See Thru Black
- ♦ MH-401B/FM See Thru Black Sunburst
- ♦ MH-417 Black Satin
- ♦ MH-417B/FM See Thru Black Sunburst
- ♦ MH-350FR See Thru Black
- ♦ MH-350FR Dark Brown Sunburst
- ♦ MH-350NT See Thru Black
- ♦ MH-350NT Dark Brown Sunburst
- ♦ MH-337 Black Satin
- ♦ MH-327 See Thru Blue
- ♦ MH-207 Black Satin
- ♦ MH-100QM/NT See Thru Black Cherry
- ♦ MH-103QM See Thru Blue
- ♦ MH-50 Black
- ♦ MH-53 Black



NEW

TL-6SM Natural Gloss

TL SERIES GUITARS

AVAILABLE MODELS

- ♦ TL-12 Natural Gloss
- ♦ TL-12 Black
- ♦ TL-6 Natural Gloss
- ♦ TL-6 Black
- ♦ TL-6SM Natural Gloss
- ♦ TL-6N Natural Gloss
- ♦ TL-6N Black



V SERIES GUITARS

AVAILABLE MODELS

- **V-401B** Black
- **V-401FM** See Thru Black
- **V-407B** Black
- **V-300** See Thru Black
- **V-307** Black Satin
- **V-50** Black
- **V-50** Snow White

V-401FM See Thru Black



AX BASSES

AVAILABLE MODELS

- **AX-104** Black



VIPER SERIES GUITARS

AVAILABLE MODELS

- **VIPER-1000** Black
- **VIPER-256** Black
- **VIPER-256** See Thru Black Cherry
- **VIPER-100FM** See Thru Black
- **VIPER-10 KIT** Black

VIPER-1000 Black



B SERIES BASSES

AVAILABLE MODELS

- **B-5E** Natural Satin
- **B-55** Black
- **B-50** Black
- **B-4E** Natural Satin
- **B-4 JR KIT** Black
- **B-208FM** See Thru Black
- **B-206SM** Natural Satin
- **B-205SM-FL** Natural Satin
- **B-205SM** Natural Satin
- **B-204SM-FL** Natural Satin
- **B-204SM** Natural Satin
- **B-155DX** See Thru Blue
- **B-154DX** See Thru Red
- **B-15 KIT** Black
- **B-10 KIT** Black

B-206SM Natural Satin



XTONE SERIES GUITARS

AVAILABLE MODELS

- **PS-1** Black
- **PS-1** Black Cherry

PS-1 Black Cherry



D SERIES BASSES

AVAILABLE MODELS

- **D-4** Natural Satin
- **D-5** Natural Satin
- **D-6** Natural Satin

D-5 Natural Satin



EC-154 Snow White

EC SERIES BASSES

AVAILABLE MODELS

- EC-154 Snow White
- EC-154 Black



ROCCO PRESTIA



RB-1004BM Honey Natural

RB SERIES BASSES

AVAILABLE MODELS

- RB-1004BM Honey Natural
- RB-1005SM Natural
- RB-1004SM Natural
- RB-1006BM Honey Natural
- RB-1005BM Honey Natural
- RB-1006SM Natural



F-155DX Dark See Thru Purple

F SERIES BASSES

AVAILABLE MODELS

- F-4E Natural Satin
- F-155DX Dark See Thru Purple
- F-5E Natural Satin
- F-104 Black
- F-415FM See Thru Black
- F-105 Black



STREAM-204 Black

STREAM SERIES BASSES

AVAILABLE MODELS

- STREAM-204 Black
- STREAM-204 Tobacco Sunburst



J-204 3 Tone Burst

J SERIES BASSES

AVAILABLE MODELS

- J-204 3 Tone Burst
- J-205 3 Tone Burst

VINTAGE-214 ASH/ROSEWOOD Natural



VINTAGE SERIES BASSES

AVAILABLE MODELS

- VINTAGE-214 ASH/ROSEWOOD Natural
- VINTAGE-214 ROSEWOOD Black
- VINTAGE-214 ROSEWOOD/FRETLESS 3 Tone Burst

AUDITORIUM ACOUSTICS

Solid Top

NEW



FISHMAN ISYS+ PREAMP
2-band EQ, Volume and Phase control, 7-segment LED tuner with ON/OFF switch.



B-BAND T-35 PREAMP
3-band EQ, Volume, Phase control, Fully chromatic LCD/LED tuner with ON/OFF switch.



A-430E

SPECIFICATIONS

- Set-Neck Construction
- 25.5" Scale
- Solid Sitka Spruce Top w/Natural Gloss Finish
- Rosewood Back & Sides
- Mahogany Neck
- Rosewood Fingerboard
- 43mm Graphtech Nubone Nut
- 20 J Frets
- Gold Hardware
- Rosewood Bridge w/ Graphtech Saddle
- Fishman Isys+ Preamp and Sonicore Pickup

A-300E

SPECIFICATIONS

- Set-Neck Construction
- 25.5" Scale
- Solid Sitka Spruce Top w/Black Gloss Finish
- Mahogany Back & Sides
- Mahogany Neck
- Rosewood Fingerboard
- 43mm Graphtech Nubone Nut
- 20 J Frets
- Black Hardware
- Rosewood Bridge w/ Graphtech Saddle
- B-Band T-35 Preamp and UST Pickup

DREADNOUGHT ACOUSTICS

Solid Top

NEW



FISHMAN ISYS+ PREAMP
2-band EQ, Volume and Phase control, 7-segment LED tuner with ON/OFF switch.



B-BAND T-35 PREAMP
3-band EQ, Volume, Phase control, Fully chromatic LCD/LED tuner with ON/OFF switch.



D-430E

SPECIFICATIONS

- Set-Neck Construction
- 25.5" Scale
- Solid Sitka Spruce Top w/Natural Gloss Finish
- Rosewood Back & Sides
- Mahogany Neck
- Rosewood Fingerboard
- 43mm Graphtech Nubone Nut
- 20 J Frets
- Gold Hardware
- Rosewood Bridge w/ Graphtech Saddle
- Fishman Isys+ Preamp and Sonicore Pickup

D-320E

SPECIFICATIONS

- Set-Neck Construction
- 25.5" Scale
- Solid Red Cedar Top w/Natural Satin Finish
- Ovangkol Back & Sides
- Mahogany Neck
- Rosewood Fingerboard
- 43mm Graphtech Nubone Nut
- 20 J Frets
- Black Hardware
- Rosewood Bridge w/ Graphtech Saddle
- B-Band T-35 Preamp and UST Pickup

JUMBO ACOUSTICS

Solid Top

NEW



FISHMAN ISYS+ PREAMP
2-band EQ, Volume and Phase control, 7-segment LED tuner with ON/OFF switch.



B-BAND T-35 PREAMP
3-band EQ, Volume, Phase control, Fully chromatic LCD/LED tuner with ON/OFF switch.



J-430E

SPECIFICATIONS

- Set-Neck Construction
- 25.5" Scale
- Solid Sitka Spruce Top w/Natural Gloss Finish
- Rosewood Back & Sides
- Mahogany Neck
- Rosewood Fingerboard
- 43mm Graphtech Nubone Nut
- 20 J Frets
- Gold Hardware
- Rosewood Bridge w/ Graphtech Saddle
- Fishman Isys+ Preamp and Sonicore Pickup

J-310E

SPECIFICATIONS

- Set-Neck Construction
- 25.5" Scale
- Solid Sitka Spruce Top w/Natural Satin Finish
- Sapelle Back & Sides
- Mahogany Neck
- Rosewood Fingerboard
- 43mm Graphtech Nubone Nut
- 20 J Frets
- Black Hardware
- Rosewood Bridge w/ Graphtech Saddle
- B-Band T-35 Preamp and UST Pickup

JB-320E

SPECIFICATIONS

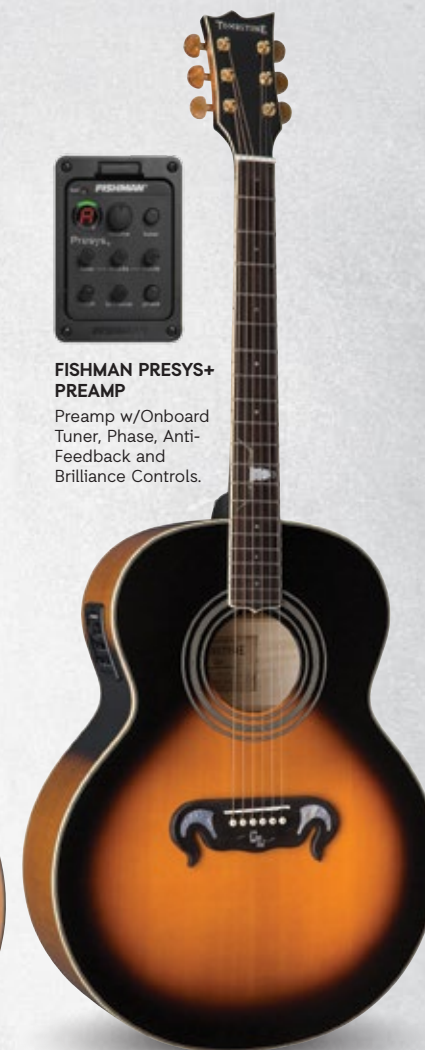
- Set-Neck Construction
- 34" Scale
- Solid Red Cedar Top w/Natural Satin Finish
- Ovangkol Back & Sides
- Mahogany Neck
- Rosewood Fingerboard
- 38mm Bone Nut
- 22 J Frets
- Black Hardware
- Rosewood Bridge w/ Bone Saddle
- Fishman Isys+ Preamp and Sonicore Pickup



FISHMAN ISYS+ PREAMP
2-band EQ, Volume and Phase control, 7-segment LED tuner with ON/OFF switch.



FISHMAN PRESYS+ PREAMP
Preamp w/Onboard Tuner, Phase, Anti-Feedback and Brilliance Controls.



GEORGE LYNCH

GL-J2E

SPECIFICATIONS

- 25.5" Scale
- Solid Sitka Spruce Top w/ Tobacco Sunburst Gloss Finish
- Flamed Maple Back & Sides
- Maple-Walnut 5-Pc Neck
- Rosewood Fingerboard
- 43mm Bone Nut
- 20 XJ Frets
- Gold Hardware
- Rosewood Bridge w/ Bone Saddle
- Fishman Presys+ Preamp and Sonicore Pickup



A - WATAIN



AARON DEAL - DARKEST HOUR



ABBATH - IMMORTAL



ALAN ASHBY - OF MICE & MEN



ANTHONY SEPE - MEMPHIS MAY FIRE



APOLLYON - IMMORTAL



MARCO MENDOZA - THE DEAD DASIES



MARK HEYLMUN - SUICIDE SILENCE



MARTEN ANDERSSON - LIZZY BORDEN



MIKE LEON - HAVOK



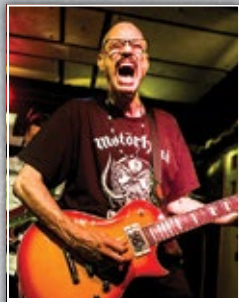
MIKE SCHLEIBAUM - DARKEST HOUR



MIKE SPREITZER - DEVILDRIVER



BILL HUDSON - WESTFIELD MASSACRE



BOB KULICK



BRANDON HOOVER - CROWN THE EMPIRE



BRIAN ESCHBACH - THE BLACK DAHLIA MURDER



BRUCE KULICK - GRAND FUNK RAILROAD



CHRIS RORLAND - SABATON



NEIL WESTFALL - A DAY TO REMEMBER



NICK QUIJANO - POWERMAN 5000



NICO SANTORA - SUICIDAL TENDENCIES



ORION - BEHEMOTH



P - WATAIN



PAGE HAMILTON - HELMET



CHUCK WEPFER - THE BLOODLINE



DAN GARGIULO - REVOCATION



DAN JACOBS - ATREYU



DAN KENNY - SUICIDE SILENCE



DEREK ENGEMANN - CATTLE DECAPITATION



DOUGLAS BLAIR - WASP



PEPPER KEENAN - DOWN



PETER TAGTREN - HYPOCRISY



PHIL MANANSALA - OF MICE & MEN



PIGGY D - ROB ZOMBIE



RICHARD JAZMIN - POWERMAN 5000



RYAN KEY - YELLOWCARD



GALDER - DIMMU BorgIR



GATOR - VITAL REMAINS



GUY MARCHAIS - SUFFOCATION



HIRAN DERANIYAGALA - BATTLECROSS



JAMES MALONE - ARSIS



JASON CHARLES MILLER



RYAN MENDEZ - YELLOWCARD



RYAN SITKOWSKI - MOTIONLESS IN WHITE



SAMMY DUET - GOATWHORE



SAMOTH - EMPEROR



SATYR - SATYRICON



SEAN BEASLEY - DYING FETUS



JED SIMON - SCAR THE MARTYR



JEFF GEORGE - WE ARE HARLOT



JEFF LING - PARKWAY DRIVE



JEREMY WAGNER - BROKEN HOPE



JOHAN SODERBERG - AMON AMARTH



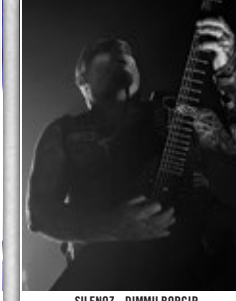
JOHN GALLAGHER - DYING FETUS



SETH - BEHEMOTH



SHAWN GLASS - THE BLOODLINE



SILENOZ - DIMMU BorgIR



STEINER GUNDERSEN - SATYRICON



TED AGUILAR - DEATH ANGEL



TELOCH - MAYHEM



JOSH MIDDLETON - SYLOSIS



KAMRON BRADBURY - BEARTOOTH



KAY BREM - ELUVIETIE



LEE ALTUS - EXODUS



LOU COTTON - WE CAME AS ROMANS



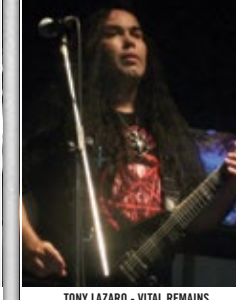
LUKE KILPATRICK - PARKWAY DRIVE



THOMAS YOUNGBLOOD - KAMELOT



TONY ASTA - BATTLECROSS



TONY LAZARD - VITAL REMAINS



TONY PERRY - PIERCE THE VEIL



WES HAUCH - THE FACELESS



ZOLI FARKAS - EXTOMORF

TOMBSTONE

CASE COMPANY



Tombstone cases use a high-resolution digital reproduction process for its graphics, along with a state-of-the-art infusion process resulting in a photo-quality image and a much more detailed look than typical silk screening. Each of these premium cases use quality materials and are form-fitted to protect the customer's instrument—just like the ESP cases currently offered.

Available in the following models:

EC / MH / F / VIPER / EX / V / B Bass



10913 Vanowen St.
North Hollywood, CA 91605
PH: 800.423.8388 | Fax: 818.506.1378

©2015 The ESP Guitar Company. All rights reserved.

espguitars.com