

The cover features a central illustration of an electric guitar and a bass guitar. The guitar is a dark color with a light-colored pickguard and a multi-colored finish on the body. The bass is a light wood color with a dark fretboard. The background is a textured, golden-brown surface with some splatters and a dark, swirling pattern. The entire cover is framed by a dark, textured border. In the corners, there are decorative flourishes: red and black scrollwork in the top-left and bottom-right, and black scrollwork in the bottom-left.

Ibanez

ELECTRIC GUITARS, ELECTRIC BASSES, AMPLIFIERS,
EFFECTS AND ACCESSORIES CATALOG

2008 002



MATEO CARMAGO
-MADINA LAKE-



THE REV
-THE PRODIGY-



THIS IS THE PAST

In the last two decades, Ibanez has taken electric guitars into realms of the extreme and hard rock is all the better for it. The JEM, the JS Series, the RG, the K7, the Xiphos: all ahead-of-the-curve innovations that only a mystic could have seen coming.

THIS IS THE PRESENT

Otherworldly notes and sounds whisper in your ear. There are no definitive words for the unexplained, but you know you are searching for something that will take you to the next level.

You ask yourself, "Where is the electric guitar heading? What will the future of hard rock guitar look like and how can I push my own musical frontiers into the beyond?"

THIS IS THE FUTURE

Travel inward and find what the darkness is hiding from you. Revel in this harvest season and commune with the unknown.

Ibanez sees all and answers with the Prestige Ultimate, a marvel of 21st Century rock guitar science.

For this undertaking, we've concentrated every bit of the manufacturing process into our Japanese factories.

Every step of the development was overseen by the highest quality craftsmen.

The specs? 24-frets of slippery-fast neck, newly designed state-of-the-art bridges and a new tonal versatility await the brave musicians who dare step into this next dimension.

That is not all: Ibanez will unveil more supernatural instruments in

2008: more eye-catching innovations, more set-in neck guitars and new models designed to mystify and delight.

Ibanez

Table of Contents

Electric Guitars	S Prestige	4-6	AR/ARX/GAX	26-27	Electric Bases	BTB Prestige	52	Electronics/Accessories	MIMX	76-77
	S	7	ART	28		BTB	53-55		TBX	78-79
	RG Prestige	8-12	X	29		SR Prestige	56		Thermion	80
	RGA Prestige	13	HRG	30		SR/GSR	57-61		SoundWave	81
	RG tremolo	14-16	Signature Guitars	31-39		EDB	62		Troubadour	82
	RG fixed	16-17	Artcore Custom	40-41		ATK	63		Amplifiers	83
	GRG/GRGM	18-19	AG/AK	42		SRX	64-65		Effects	84-86
	FR Prestige	20	AF	43		ICB	66		Tuners	87
	JTK	21	AFS	44		Signature Bases	67-69		Cables	88
	SV Prestige	22	AS	45-46		JTKB/Artcore	70-71		Picks	89
	SA	23-24	AJD	47		Jumpstart	72-73		Bags/Cases	90-91
	SZR	25	AM/AGS	48-49					Straps	92
									Guitar/Volt Specifications	93-97

S Prestige

"This is the future," said the fortune teller as she laid down the last card. Ibanez's S Prestige for 2008 represents a bold, previously unheard universe of metal mayhem. 24-frets of diabolical wizardry, a newly-designed ZR-2 bridge with ZPS3 spring system and vicious Hot Grinder and Short Tracer pickups make this S Prestige the instrument that all metal-minded guitars will be judged against. Made in Japan by Ibanez's premier craftsmen.



S5470 TKS

- 5pc Wizard Maple/Walnut neck
- Mahogany body
- Jumbo frets
- ZR-2 bridge
- HGD1 (H) neck pu
- ST1 (S) middle pu
- HGD2 (H) bridge pu
- color : BBK, TKS

S5470 BBK

- 5pc Wizard Maple/Walnut neck
- Mahogany body
- Jumbo frets
- ZR-2 bridge
- HGD1 (H) neck pu
- ST1 (S) middle pu
- HGD2 (H) bridge pu
- color : BBK, TKS

THE SIMPLE TRUTH:

- 5pc, wicked fast 24-fret neck.
- Smooth, contoured mahogany body.
- ZR-2 bridge w/ZPS3 spring system.
- Massive tone and sustain.



BBK Finish

Hi-tech, leatherish Baker's Black finish on S5470.



24ft Wizard Prestige Neck

The long-awaited 24-fret Wizard neck has opened the new door for musicians to enter the Realm of S.



New Top-Lok

With the very simple design, the new Ibanez Top-Lok no longer requires the retainer bar to maintain string tension. The Metal injection molding process has made all the edges smooth so your hands aren't scratched.



Wrench Holder

If you are serious about the condition of your gear, you must carry the necessary tools with you always. But how...? The S Prestige guitars have a place to store your wrenches with your axe. Access wherever, whenever needed.



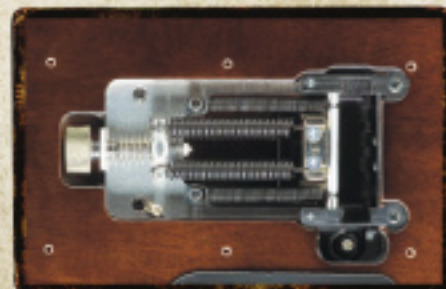
ZR-2

The new ZR-2 features the new snap-in arm socket, that ensures the arm goes in properly and is easy to remove.



ZPS3

The Zero Point System keeps evolving. The new ZPS3 is made of Duralumin, which drastically reduces its weight as well as the size of the cavity on the body back. Switchable to floating setup, of course.



Intonation Adjustment Tool

Just unscrew the built-in intonation adjustment tool from the base and screw it into the bottom of each saddle for quick adjustments. U.S. PAT No. 6,957,354



Arm Torque Adjustment

Arm torque is easily tightened or loosened by turning the arm-holder adjustment screw. No matter what the setting, the arm always feels secure.



HGD & ST pickups

The new Hot Grinder pickups are specially designed for the new S Prestige output extra volume, yet sharpness is not sacrificed. The Short Tracer pickup with strong magnet enables low-profile setting in the middle pickup position, for shredding picking.

S
Prestige



S2170FW NTF

- 5pc Wizard II Maple /Bubinga neck *Beating*
- Figured Poplar top /Selected Mahogany body
- Jumbo frets
- ZR Tremolo bridge w/ZPS2
- DiMarzio® IBZ (H) neck pu
- DiMarzio® IBZ (S) mid pu
- DiMarzio® IBZ (H) bridge pu
- color : NTF



S2170FB NTF

- 5pc Wizard II Maple /Bubinga neck *Beating*
- Figured Bubinga top /Selected Mahogany body
- Jumbo frets
- ZR Tremolo bridge w/ZPS2
- DiMarzio® IBZ (H) neck pu
- DiMarzio® IBZ (S) mid pu
- DiMarzio® IBZ (H) bridge pu
- color : NTF



S2170 PCM

- 5pc Wizard II Maple /Bubinga neck *Beating*
- Mahogany body
- Jumbo frets
- ZR Tremolo bridge w/ZPS2
- DiMarzio® IBZ (H) neck pu
- DiMarzio® IBZ (S) mid pu
- DiMarzio® IBZ (H) bridge pu
- color : PCM



DiMarzio® IBZ pickups on S2170FW.



PCM Finish

The 3D radius body of the S is enhanced by the new "Purple Chameleon" finish, changing color under light.

THE SIMPLE TRUTH:

- Wizard II, 5 pc Prestige finishing Neck.
- Smooth, contoured mahogany body.
- Original ZR Tremolo w/ZPS2 spring system.
- Massive tone and sustain.

S

In the Tarot deck, The Magician card represents power, and not just slight-of-hand parlor tricks—real power to sway, influence and dazzle. The S holds this formidable power as well. Its sleek, comfortable body, double-locking tremolo and high-gain pickup combos make possible the creation of sonic spider webs and vast oceans of chaos.



S670FM ATF

- 3pc Wizard II neck
- Flamed Maple top /Mahogany body
- Jumbo frets
- ZR Tremolo bridge w/ZPS2
- INF1 (H) neck pu
- INF1 (S) mid pu
- INF2 (H) bridge pu
- color : ATF

THE SIMPLE TRUTH:

- Heavy mahogany tone without heavy mahogany weight.
- Thin around the edges for comfort. Fat around the pickups and bridge for thick tone.
- Available in 7-string model.

S520EX MGF

- 3pc Wizard II neck
- Mahogany body
- Jumbo frets
- ZR Tremolo bridge w/ZPS2
- INF1 (H) neck pu
- INF2 (H) bridge pu
- color : MGF, OXF



S520EX OXF

- 3pc Wizard II neck
- Mahogany body
- Jumbo frets
- ZR Tremolo bridge w/ZPS2
- INF1 (H) neck pu
- INF2 (H) bridge pu
- color : MGF, OXF



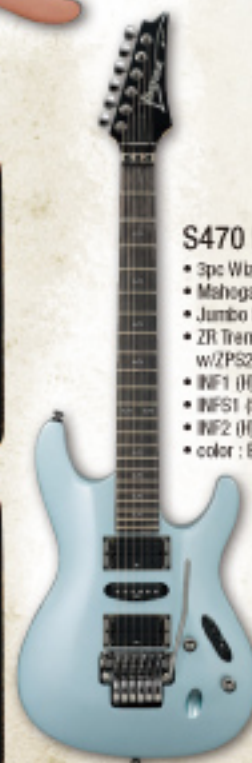
Sleek & Comfort body on S470.



Oval inlays on S670FM.

S470 IB

- 3pc Wizard II neck
- Mahogany body
- Jumbo frets
- ZR Tremolo bridge w/ZPS2
- INF1 (H) neck pu
- INF1 (S) mid pu
- INF2 (H) bridge pu
- color : BK, IB



S320 WK

- 3pc Wizard II neck
- Mahogany body
- Jumbo frets
- ZR Tremolo bridge w/ZPS2
- INF1 (H) neck pu
- INF2 (H) bridge pu
- color : WK



S7320 BK

- 3pc Wizard II-7 neck
- Mahogany body
- Jumbo frets
- ZR Tremolo bridge w/ZPS2
- AH7-1 (H) neck pu
- AH7-2 (H) bridge pu
- color : BK



RG Prestige



RG320Z RBB

- Spc Wizard Maple
- Wenge neck-thru *Body*
- AAA Quilted Maple top
- Mahogany wing body
- Jumbo frets
- Edge-Zero bridge
- DiMarzio® IBZ-N (H) neck pu
- DiMarzio® IBZ-B (H) bridge pu
- color : RBB, WRS



RG320Z WRS

- Spc Wizard Maple
- Wenge neck-thru *Body*
- AAA Quilted Maple top
- Mahogany wing body
- Jumbo frets
- Edge-Zero bridge
- DiMarzio® IBZ-N (H) neck pu
- DiMarzio® IBZ-B (H) bridge pu
- color : RBB, WRS



RG220Z NTF

- Spc Wizard Maple
- Wenge neck-thru *Body*
- Ash wing body
- Jumbo frets
- Edge-Zero bridge
- DiMarzio® IBZ-N (H) neck pu
- DiMarzio® IBZ-B (H) bridge pu
- color : NTF



RG3520Z HBK

- Spc Wizard Maple
- Walnut neck *Body*
- Flamed Maple top
- Mahogany body
- Jumbo frets
- Edge-Zero bridge
- DiMarzio® IBZ-N (H) neck pu
- DiMarzio® IBZ-B (H) bridge pu
- color : HBK



RG2610Z BK

- Spc Wizard Maple
- Walnut neck *Body*
- Basswood body
- Jumbo frets
- Edge-Zero bridge
- Seymour Duncan® TB-10 Full Shred™ (H) bridge pu
- color : BK

In the hands of the magician or warrior, these guitars can summon lightning and change the course of raging rivers. The combination of sleek bodies, lethal pickups and state-of-the-art double-locking tremolos gives RG Prestiges the power to charm snakes out of their skins and split mountains in half. Made in Japan by Ibanez's premier craftsmen.

THE SIMPLE TRUTH:

- One of the most popular metal guitars ever
- Fast, flat and thin Wizard necks for comfort and speed.
- Ibanez Edge tremolo for rigorous, aggressive playing
- Gotoh precision tuning machines.
- Include deluxe Prestige case



The Spc thru-body neck on RG Prestige models offers massive sustain, easy playability at the upper frets, and incredible strength and stability.



Edge-Zero

The ultimate form of Edge, the Edge-Zero is the merge with the ZR Trem, another Ibanez tremolo revolution. Maintaining brutal action of knife edge, the Edge-Zero deploys all unique features of ZR such as on-board intonation adjuster screw and the arm torque adjuster. And the new snap-in arm socket is easy to insert/remove the tremolo arm and you can feel it goes in securely. Edge-Zero is featured on the all RG Prestige, RG3000s and RG2000s.



Intonation Adjustment Tool

Just unscrew the built-in intonation adjustment tool from the base and screw it into the bottom of each saddle for quick adjustments. U.S. PAT No. 6,867,351



Arm Torque Adjustment

Arm torque is easily tightened or loosened by turning the arm-holder adjustment screw.



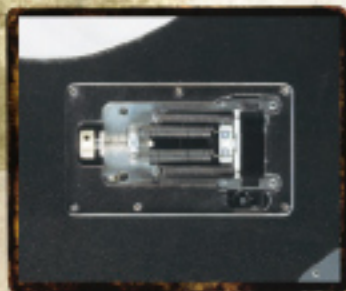
Wrench Holder

If you are serious about the condition of your gear, you must carry the necessary tools with you always. But how? The S Prestige guitars have a place to store your wrenches with your axe. Access wherever, whenever needed.



New Top-Lok

With the very simple design, the new Ibanez Top-Lok no longer requires the retainer bar to maintain string tension. The Metal Injection Molding process has made all the edges smooth so your hands aren't scratched.



ZPS3

After having relieved so many players from tuning nightmares, the Zero Point System is now available on selected RG Prestige models. The new ZPS3 utilizes Duralumin, an alloy known for aircraft material, drastically reducing its weight as well as the size of the cavity on the body back. Switchable to floating setup.



RG2570Z VGD

- Spc Wizard Maple/Walnut neck *Prestige*
- Basswood body
- Jumbo frets
- Edge-Zero bridge
- DiMarzio® IBZ-N (H) neck pu
- DiMarzio® IBZ-S (S) mid pu
- DiMarzio® IBZ-B (H) bridge pu
- color : VSL, VGD



RG2570Z VSL

- Spc Wizard Maple/Walnut neck *Prestige*
- Basswood body
- Jumbo frets
- Edge-Zero bridge
- DiMarzio® IBZ-N (H) neck pu
- DiMarzio® IBZ-S (S) mid pu
- DiMarzio® IBZ-B (H) bridge pu
- color : VSL, VGD



RG2550Z GK

- Spc Wizard Maple/Walnut neck *Prestige*
- Basswood body
- Jumbo frets
- Edge-Zero bridge
- DiMarzio® IBZ-N (H) neck pu
- DiMarzio® IBZ-S (S) mid pu
- DiMarzio® IBZ-B (H) bridge pu
- color : GK, GW

THE SIMPLE TRUTH:

- One of the most popular metal guitars ever.
- Six, Seven and Eight-string models.
- Fast, flat and thin Wizard necks for comfort and speed.
- Gotoh precision tuning machines.
- Includes deluxe Prestige case.



RG2550Z GW

- Spc Wizard Maple/Walnut neck *Prestige*
- Basswood body
- Jumbo frets
- Edge-Zero bridge
- DiMarzio® IBZ-N (H) neck pu
- DiMarzio® IBZ-S (S) mid pu
- DiMarzio® IBZ-B (H) bridge pu
- color : GK, GW

RG1570 SER

- Spc Wizard Maple/Walnut neck *Prestige*
- Basswood body
- Jumbo frets
- Edge Pro bridge
- V7 (H) neck pu
- S1 (S) mid pu
- V8 (H) bridge pu
- color : MRB, SDB, SER



Edge Pro

The Edge PRO features a unique Sound Metal Chip on each saddle which help increase sustain right at the most critical area, the intonation point. With the Edge PRO design, the sliding string holders are actually part of the bridge, which prevents string holder blocks from getting lost during string changes and no need to cut off the ball of your strings. Edge Pro is featured on RG1000s.



SER Finish

Unique textured "Suede Red" finish on the RG1570.

RG1570 SDB

- Spc Wizard Maple/Walnut neck *Prestige*
- Basswood body
- Jumbo frets
- Edge Pro bridge
- V7 (H) neck pu
- S1 (S) mid pu
- V8 (H) bridge pu
- color : MRB, SDB, SER

RG1570 MRB

- Spc Wizard Maple/Walnut neck *Prestige*
- Basswood body
- Jumbo frets
- Edge Pro bridge
- V7 (H) neck pu
- S1 (S) mid pu
- V8 (H) bridge pu
- color : MRB, SDB, SER

RG Prestige

THE SIMPLE TRUTH:

- One of the most popular metal guitars ever.
- Six, Seven and Eight-string models.
- Fast, flat and thin Wizard necks for comfort and speed.
- Gotoh precision tuning machines.
- Includes deluxe Prestige case.



RG1527 RB

- Spc Ultra Maple /Wenge neck *Wizard*
- Basswood body
- Jumbo frets
- Edge Pro 7 bridge
- V77 (H) neck pu
- V87 (H) bridge pu
- color : RB



RG1820X GK

- Spc Wizard Maple /Walnut neck *Wizard*
- Basswood body
- Jumbo frets
- Double Edge Pro bridge with L.R. Baggs[®] piezo
- V7 (H) neck pu
- V8 (H) bridge pu
- color : GK



RG2228 GK

- Spc Ultra Maple /Wenge neck *Wizard*
- Basswood body
- Jumbo frets
- FX EDGE III-8
- EMG[®] (USA) 808 neck pu
- EMG[®] (USA) 808 bridge pu
- color : GK

RGA Prestige

Wizards need the right wand to cast their magic incantations on the churning crowds. The RGA Prestige has become one of the most revered metal machines, never failing to mesmerize and pulverize. Arched tops, fast Wizard Prestige necks, carefully chosen pickups and Gibraltar Plus fixed bridges make the RGA the choice for lowdown tunings and unholy tones.

THE SIMPLE TRUTH:

- Fast, flat and thin Wizard necks with Prestige finishing.
- Massive Gibraltar Plus fixed bridge allows wide range of intonation adjustment needed for heavy strings.
- Gotoh precision tuning machines.
- Includes deluxe Prestige case.



RGA321F SPB

- Spc Wizard Maple /Walnut neck *Wizard*
- Flamed Maple top /Mahogany body
- Jumbo frets
- Gibraltar Plus bridge
- DiMarzio[®] IBZ-N (H) neck pu
- DiMarzio[®] IBZ-B (H) bridge pu
- color : SPB



RGA121H CDO

- Spc Wizard Maple /Walnut neck *Wizard*
- Mahogany body
- Jumbo frets
- Gibraltar Plus bridge
- V7 (H) neck pu
- V8 (H) bridge pu
- color : CDO, CDR



RGA121H CDR

- Spc Wizard Maple /Walnut neck *Wizard*
- Mahogany body
- Jumbo frets
- Gibraltar Plus bridge
- V7 (H) neck pu
- V8 (H) bridge pu
- color : CDO, CDR



Double Edge Pro Tremolo on RG1820X

The Double Edge Pro allows brilliant acoustic-style tones, which can also be blended with electric tones. Piezos by L.R. Baggs[®] are isolated to eliminate palm noise and a 2-band EQ on the piezo output provides added tone control.



Ibanez FX EDGE III-8 double-locking fixed bridge was made specifically to handle and augment the awesome extended range of the RG2228GK 8-string.



The U.S.A.-made EMG[®] 808 active pickups—the first ever full-production 8-string pickups.



DiMarzio[®] IBZ pickups on RGA321F SPB.



The brilliant highs and looks of a 16mm arched maple top guarantee visual and sonic attention from the front row to the back of the balcony.



Gibraltar Plus bridge on RGA121H-CDO.

RG TREMLO

An army stands before the gates of the castle, silently awaiting the call to battle. In their hands they clutch their time-worn axes, bloodied but still razor-sharp as the day they were forged. For two decades, the legion of RG warriors has grown like a virus, thrusting the RG to the head of the metal pack. Fast, flat necks, rabid pickups and double-locking tremos combine to create sonic demons from beyond the world of mortals.

RG420EG SBK

- 3pc Wizard II neck
- Basswood body
- Jumbo frets
- Edge III bridge
- V7 (H) neck pu
- V8 (H) bridge pu
- color : SBK, BRD

RG320PG P1

- 3pc Wizard II neck
- Basswood body
- Jumbo frets
- Edge III bridge
- INF3 (H) neck pu
- INF4 (H) bridge pu
- color : P1, P2

RG420EG BRD

- 3pc Wizard II neck
- Basswood body
- Jumbo frets
- Edge III bridge
- V7 (H) neck pu
- V8 (H) bridge pu
- color : SBK, BRD

RG320PG P2

- 3pc Wizard II neck
- Basswood body
- Jumbo frets
- Edge III bridge
- INF3 (H) neck pu
- INF4 (H) bridge pu
- color : P1, P2

RG350DX WH

- 3pc Wizard II neck
- Basswood body
- Jumbo frets
- Edge II bridge
- INF3 (H) neck pu
- INF33 (S) mid pu
- INF4 (H) bridge pu
- color : WH

RG350EX BK

- 3pc Wizard II neck
- Basswood body
- Jumbo frets
- Edge II bridge
- INF3 (H) neck pu
- INF33 (S) mid pu
- INF4 (H) bridge pu
- color : BK

RG320DXFM AM

- 3pc Wizard II neck
- Flamed Maple top
- Basswood body
- Jumbo frets
- Edge II bridge
- INF3 (H) neck pu
- INF4 (H) bridge pu
- color : AM, TG

RG320DXFM TG

- 3pc Wizard II neck
- Flamed Maple top
- Basswood body
- Jumbo frets
- Edge II bridge
- INF3 (H) neck pu
- INF4 (H) bridge pu
- color : AM, TG



BRD Finish
The body top is engraved in a brick-like pattern. Another pattern, SBK, is inspired by a spider's web.



V7 & V8 Pickups
Ibanez original V7 & V8 pickups on the RG420EG.



RG320PG Finish
The body top of the RG320PG features paper art, like graffiti on guitar.



RG300 Series models feature Infinity 3 and 4 pickups for more bite and chunk and balanced string output.

THE SIMPLE TRUTH:

- Double-locking trem systems allow radical effects and sonic chaos with total tuning stability.
- 24-fret thin Wizard necks in bolt-on and neck-thru versions.
- Sharktooth inlays



Edge II tremolo design provides even more stability and strength under the most demanding playing conditions.

RG

RG FIXED

The original RG's offered double-locking devastation only. But many metal adherents demanded the simplicity of a fixed bridge. Their wishes were granted.



RG370DX RRD

- 3pc Wizard II neck
- Basswood body
- Jumbo frets
- Edge II bridge
- INF3 (H) neck pu
- INF33 (S) mid pu
- INF4 (H) bridge pu
- color : BK, RRD
- Also available left-handed in BK finish



RGT6EXFX BK

- 3pc Wizard II Maple/Walnut neck-thru
- Mahogany wing body
- Jumbo frets
- Fixed bridge
- EMG® 85 (H) neck pu
- EMG® 81 (H) bridge pu
- color : BK



RGT6EX IPT

- 3pc Wizard II Maple/Walnut neck-thru
- Mahogany wing body
- Jumbo frets
- Edge II bridge
- EMG® 85 (H) neck pu
- EMG® 81 (H) bridge pu
- color : IPT



RG7321 BK

- 3pc Wizard II-7 Maple/Walnut neck
- Basswood body
- Jumbo frets
- 7-string Fixed bridge
- AH7-1 (H) neck pu
- AH7-2 (H) bridge pu
- color : BK



RGR321EX BK

- 3pc Wizard II neck
- Basswood body
- Jumbo frets
- Fixed bridge
- INF1 (H) neck pu
- INF2 (H) bridge pu
- color : BK



RG321MH WK

- 3pc Wizard II neck
- Mahogany body
- Jumbo frets
- Fixed bridge
- INF3 (H) neck pu
- INF4 (H) bridge pu
- color : WK, RB



RG321MH RB

- 3pc Wizard II neck
- Mahogany body
- Jumbo frets
- Fixed bridge
- INF3 (H) neck pu
- INF4 (H) bridge pu
- color : WK, RB

THE SIMPLE TRUTH:

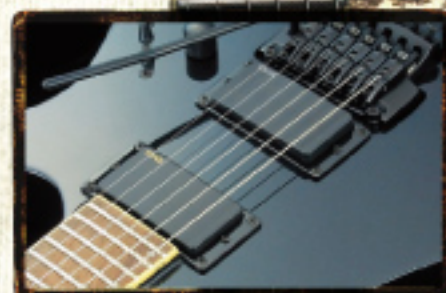
- The world's premier metal axe—with the simplicity and sustain of a fixed bridge.
- 24-fret, thin, fast and flat Wizard necks in both bolt-on and neck-thru versions.



RRD Finish
Special flat finish, "Rubber Red"



Neck Thru
The increased sustain and playability provided by neck-thru construction have made RGT models some of the highest demand models in the history of the RG.



EMG PU
The RGT6EX features EMG 81/85 active pickups



Fixed bridge with thin-body stringing provides better string tension, simplicity and increased sustain

THE SIMPLE TRUTH:

- Bound fretboards (GRX170DX).
- Sharktooth neck inlays (GRX170DX).

GiO

Even sorcerer's apprentices need the right tools to approach true mastery of magic. Ibanez's GiO series have all the quality and precision set-up as our most expensive models, but at prices that won't scare the spirits away.



GRG270B JB

- GRG2 neck
- Basswood body
- Medium frets
- Edge II bridge
- PSND1 (H) neck pu
- PSNDS (S) mid pu
- PSND2 (H) bridge pu
- color : BKN, JB



GRG270B BKN

- GRG2 neck
- Basswood body
- Medium frets
- Edge II bridge
- PSND1 (H) neck pu
- PSNDS (S) mid pu
- PSND2 (H) bridge pu
- color : BKN, JB



GRG170DX CA

- GRG1 neck
- Basswood body
- Medium frets
- Fat 10 bridge
- PSND1 (H) neck pu
- PSNDS (S) mid pu
- PSND2 (H) bridge pu
- color : BKN, JB, CA, SL



GRG170DX BKN

- GRG1 neck
- Basswood body
- Medium frets
- Fat 10 bridge
- PSND1 (H) neck pu
- PSNDS (S) mid pu
- PSND2 (H) bridge pu
- color : BKN, JB, CA, SL



Edge II bridge now featured on GRG270B models.



Sharktooth inlay & Neck binding on GRG170DXJB.

THE SIMPLE TRUTH:

- The first Ibanez compact guitar.
- 22.2" scale neck offers low tension and small size. Perfect for beginners.
- Comes with the special carrying bag.

Mikro

The perfect guitar for smaller hands itching to wreak seriously big havoc. Ibanez Mikros offer anyone who needs a compact axe or the comfort of a smaller neck a real guitar with big time metal features.



GRGM21GB BKN

- GRGM neck
- Nato body
- Medium frets
- Fixed bridge
- Standard (H) neck pu
- Standard (H) bridge pu
- color : BKN, BMB



GRGM21GB BMB

- GRGM neck
- Nato body
- Medium frets
- Fixed bridge
- Standard (H) neck pu
- Standard (H) bridge pu
- color : BKN, BMB



GRG170DX SL

- GRG1 neck
- Basswood body
- Medium frets
- Fat 10 bridge
- PSND1 (H) neck pu
- PSNDS (S) mid pu
- PSND2 (H) bridge pu
- color : BKN, JB, CA, SL



GRG170DX JB

- GRG1 neck
- Basswood body
- Medium frets
- Fat 10 bridge
- PSND1 (H) neck pu
- PSNDS (S) mid pu
- PSND2 (H) bridge pu
- color : BKN, JB, CA, SL



GRG170DXL BKN

- GRG1 neck
- Basswood body
- Medium frets
- Fat 10 bridge
- PSND1 (H) neck pu
- PSNDS (S) mid pu
- PSND2 (H) bridge pu
- color : BKN





FR1620 BK

- 3pc Wizard Maple
- Walnut neck *Bridge*
- Ash body
- Jumbo frets
- Tight-End bridge
- CCR1 (H) neck pu
- CCR2 (H) bridge pu
- color : BK



FR2620 DBS

- 3pc Wizard Maple
- Walnut neck *Bridge*
- Ash body
- Jumbo frets
- Tight-End bridge
- CCR1 (H) neck pu
- CCR2 (H) bridge pu
- color : DBS

FR *Prestige*

The FR gives a nod to the past, but, with its new IBZ CCR pickups and Tight-End bridge, this new Ibanez model is ready for whatever modern thrashing it receives.

THE SIMPLE TRUTH:

- FR features new Tight-End Bridge and CCR Pickups for tonal versatility.



Tight-End

Rigid and precise as you can imagine, the new Tight-End bridge may be the first hard-tail bridge practically designed ever.



CCR PU

The new Ibanez original CCR pickups don't have the same heat of ceramic magnets, but still have the power to cut through the mix.



24ft Wizard Prestige Neck

The FR's fast, flat and thin Wizard neck guarantees your playing comfort no matter what music you play.



JTK4 RD

- 3pc JTK neck
- Mahogany body
- Medium frets
- Full Tune III bridge w/ ROLLER SADDLE
- VBX60 Vintage Vibrato
- ACH3 (H) neck pu
- ACH4 (H) bridge pu
- color : RD



JTK3 TQ

- 3pc JTK neck
- Mahogany body
- Medium frets
- Full Tune III bridge
- HFS1 (S) neck pu
- HFS2 (S) bridge pu
- color : BTM, RBE, TQ



JTK3 RBE

- 3pc JTK neck
- Mahogany body
- Medium frets
- Full Tune III bridge
- HFS1 (S) neck pu
- HFS2 (S) bridge pu
- color : BTM, RBE, TQ



JTK3 BTM

- 3pc JTK neck
- Mahogany body
- Medium frets
- Full Tune III bridge
- HFS1 (S) neck pu
- HFS2 (S) bridge pu
- color : BTM, RBE, TQ



VBX60 Vibrato

Ibanez VBX60 Vintage Vibrato for solid body guitars.



HFS Pickup

The original construction of HFS pickups uniquely cancel the hum, maintaining the single coil's strong highs and clarity.

Jet King

For every futuristic vision, one must always look back and pay respect to the ways of the old. The Ibanez Jet King models harken back to a time when guitars roared through towns like hot rods, engines exposed and blaring.

THE SIMPLE TRUTH:

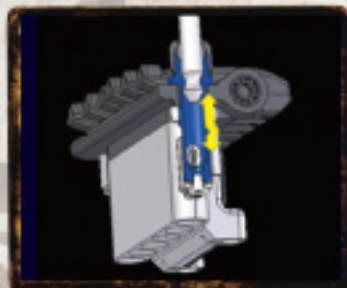
- New Vintage Vibrato on JTK4RD.
- New Ibanez original soap bar pickups on JTK3 models.

SV Prestige

The Knight of Swords is a powerful card in the Tarot deck and represents the massive energy of a stream-lined, double-edged weapon. The Ibanez SV is an extremely versatile axe that can deliver clear, searing violin-like tones as well as sheer destruction. Its True Duo pickups offer an astounding amount of tonal variations that can cut with precision as well as slash and lacerate.

THE SIMPLE TRUTH:

- Beautiful Ash and Flamed Maple Tops.
- SynchroniZR bridge w/ZPS-FX spring system gives total control and tuning stability.
- True Duo pickups w/push-pull volume knobs for massive tonal possibilities.



synchroniZR

ZR's tremolo revolution is finally available to non-locking tremolo players! Ibanez synchroniZR does not only feature the unreal smoothness of ball bearing pivot, the one piece saddle construction minimizing the unnecessary wobble and loss of string vibration. The tremolo arm is made of ultra-light Duralumin, which balances between the light weight bridge part with increased durability. The other ZR advantages such as the intonation adjustment and Arm Torque adjustment are inherited.



SV5470F NBL

- 3pc Wizard Maple/Walnut neck *Beauty*
- Flamed Maple top/Mahogany body
- Jumbo frets
- synchroniZR bridge
- TDB2 (H) neck pu
- ST1 (S) mid pu
- TDB3 (H) bridge pu
- color : DSB, NBL



SV5470F DSB

- 3pc Wizard Maple/Walnut neck *Beauty*
- Flamed Maple top/Mahogany body
- Jumbo frets
- synchroniZR bridge
- TDB2 (H) neck pu
- ST1 (S) mid pu
- TDB3 (H) bridge pu
- color : DSB, NBL



SV5470A HNG

- 3pc Wizard Maple/Walnut neck *Beauty*
- Ash top/Mahogany body
- Jumbo frets
- synchroniZR bridge
- TDB2 (H) neck pu
- ST1 (S) mid pu
- TDB3 (H) bridge pu
- color : HNG

SA

For the warriors who demand a different feel to their weapon, the SA can be the sword of choice. The SA has an S-shaped, comfortable body, but with a flat back. The S-S-H pickup configuration with a classy, transparent finish is one face of the SA. These axes are versatile, beautiful and deadly.



SAS36FM TRS

- 3pc SAS set-in neck
- Flamed Maple top/Mahogany body
- Medium frets
- SAT Pro II bridge
- AHS1 (S) neck pu
- AHS2 (S) mid pu
- True Duo Buckler (H) bridge pu
- color : TL, TRS

SA260FM AMB

- 3pc SA neck
- Flamed Maple top/Mahogany body
- Medium frets
- SAT Pro II bridge
- AHS1 (S) neck pu
- AHS2 (S) mid pu
- True Duo Buckler (H) bridge pu
- color : AMB, TLB



SA260FM TLB

- 3pc SA neck
- Flamed Maple top/Mahogany body
- Medium frets
- SAT Pro II bridge
- AHS1 (S) neck pu
- AHS2 (S) mid pu
- True Duo Buckler (H) bridge pu
- color : AMB, TLB
- Also available left-handed in TLB finish



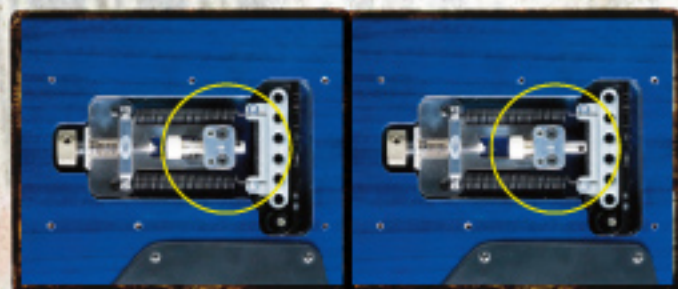
SA160 BS

- 3pc SA neck
- Mahogany body
- Medium frets
- SAT Pro II bridge
- AHS1 (S) neck pu
- AHS2 (S) mid pu
- AH1 (H) bridge pu
- color : BK, BS



Auto-Tune Tuner

The smart design cuts excess string while the guitar is tuned. No extra tool is needed.



ZPS-FX

Paired with the synchroniZR tremolo, the SV Prestige features the simpler version of the Zero Point System. The ZPS-FX enables switching between Floating/Non Floating by simply turning the knob on the body back.



Double True-Duo PU

The True Duo Blast pickups on the SV Prestige maximize the True Duo advantage. The special wiring enables switching the PU configuration between H-S-H and S-S-S by one push/pull action.



SAT Pro II Tremolo

SAT Pro II Tremolo Bridge and Metal Pickup ring on the SAS36FM

THE SIMPLE TRUTH:

- Comfortable S shape, size and arched top with a standard flat back.
- Combination of mahogany, SAT tremolo and true single and true humbucking tones offers incredible versatility.



SAS set-in neck features strong 3pc construction and special neck finish for extraordinary comfort and playability.

SA

For the warriors who demand an even more different feel, the SA has another side: On top of the same S-Shaped, comfortable body with flat back, a powerful H-H pickup configuration, solid finish and gorgeous new inlay design make these axes devastatingly exquisite.

SAS32EX WH

- 3pc SAS set-in neck
- Mahogany body
- Medium frets
- SAT Pro II bridge
- True Duo Backer (H) neck pu
- True Duo Backer (H) bridge pu
- color : BK, WH



SAS32EX BK

- 3pc SAS set-in neck
- Mahogany body
- Medium frets
- SAT Pro II bridge
- True Duo Backer (H) neck pu
- True Duo Backer (H) bridge pu
- color : BK, WH



SA120EX SV

- 3pc SA neck
- Mahogany body
- Medium frets
- SAT Pro II bridge
- AHS (H) neck pu
- AHS (H) bridge pu
- color : BK, SV



SA120EX BK

- 3pc SA neck
- Mahogany body
- Medium frets
- SAT Pro II bridge
- AHS (H) neck pu
- AHS (H) bridge pu
- color : BK, SV



True Duo Backer pickups with covers on SAS32EX.



SA120EX's covered AHS/6 pickups with Banez 'Y' logo integrated.

THE SIMPLE TRUTH:

- Comfortable S shape, size and arched top with a standard flat back.
- Combination of mahogany, SAT tremolo and true single and true humbucking tones offers incredible versatility.

SZR

A heavier mahogany battle axe than the S, the SZR is thicker for more screaming, fat tone. The 24.75" scale neck clearly separates the demand of players who play those axes from its counterpart. The SZR contours make up for any weight difference with a physical comfort that's almost obscene.



SZR520 DHS

- SZR Mahogany set-in neck
- Flamed Maple top on Maple Mahogany body
- Medium frets
- Gibraltar II bridge
- ND1-N (H) neck pu
- ND1-B (H) bridge pu
- color : DHS, DVS, TGB



SZR520 DVS

- SZR Mahogany set-in neck
- Flamed Maple top on Maple Mahogany body
- Medium frets
- Gibraltar II bridge
- ND1-N (H) neck pu
- ND1-B (H) bridge pu
- color : DHS, DVS, TGB



SZR520 TGB

- SZR Mahogany set-in neck
- Flamed Maple top on Maple Mahogany body
- Medium frets
- Gibraltar II bridge
- ND1-N (H) neck pu
- ND1-B (H) bridge pu
- color : DHS, DVS, TGB



SZR model's 60mm thick mahogany body with maple top.



The SZR's massive tone is also supported by the new original Neo2 pickups that feature the Neodymium, the strongest magnet for guitar pickups.

THE SIMPLE TRUTH:

- Fat mahogany tone.
- Set-in neck for more sustain and comfort.
- High output pickups with strong, state-of-the-art magnets.

ARTIST

In the old days, artisans would refine and re-approach ideas that had long been accepted. Ibanez's classic Artist Series has familiar shapes and designs, meticulously upgraded and re-vamped over time. Yet, re-introducing the original AR300 is not a step backwards, since superb Japanese craftsmanship is still hard to find despite 20 years of progress in guitar manufacturing.

THE SIMPLE TRUTH:

- Set-neck construction, superior hardware, warm mahogany tone and sustain.
- Widest choices available in set-neck guitars, covering different styles, price ranges and playing requirements.
- The AR300RE's original Tri-Sound switching system offers the choice of standard humbucking, single coil or parallel humbucking sounds by using the mini switch. Combined with the regular pickup selector, 15 different and distinct tone settings are available at your fingertips.



AR300RE CS

- 3pc AR set-in neck
- Flamed Maple top/Mahogany body
- Medium frets
- Gibraltar bridge w/Sustain Block
- Quik Change tailpiece
- Super 58 (H) neck pu
- Super 58 (H) bridge pu
- color : CS



ARX500 AMB

- 1pc ARX Mahogany set-in neck
- Quilted Maple top /Mahogany body
- Medium frets
- Gibraltar III bridge
- Quik Change Classic tailpiece
- Super 58 Custom (H) neck pu
- Super 58 Custom (H) bridge pu
- color : AMB



Scalloped fretboard inlay on ARX500.



Quilted maple top on ARX320.



The more vivid arch and deeper cut horn emphasize the modern heaviness of the ARX140.



ARX320 MS

- ARX Mahogany set-in neck
- Quilted Maple top /Mahogany body
- Medium frets
- Gibraltar II bridge
- Quik Change II tailpiece
- ACH1-S (H) neck pu
- ACH2-S (H) bridge pu
- color : MS



ARX140 BK

- ARX Mahogany set-in neck
- Maple top/Mahogany body
- Medium frets
- Gibraltar III bridge
- Quik Change II tailpiece
- ACH1-S (H) neck pu
- ACH2-S (H) bridge pu
- color : BK, WH



ARX140 WH

- ARX Mahogany set-in neck
- Maple top/Mahogany body
- Medium frets
- Gibraltar III bridge
- Quik Change II tailpiece
- ACH1-S (H) neck pu
- ACH2-S (H) bridge pu
- color : BK, WH

THE SIMPLE TRUTH:

- High output humbuckers, high quality construction and low prices—all with the Ibanez brand name and sound.

GAX

If a return to simplicity is in your future, Ibanez GAX guitars offer no-frills, raw rock blunt force: two humbuckers, a 3-way switch and double-cutaway bodies at the most simple of prices.

GAX30 TR

- GAX2 neck
- Nato body
- Medium frets
- Fixed bridge
- PSND1 (H) neck pu
- PSND2 (H) bridge pu
- color : BKN, TR, WH

GAX30 WH

- GAX2 neck
- Nato body
- Medium frets
- Fixed bridge
- PSND1 (H) neck pu
- PSND2 (H) bridge pu
- color : BKN, TR, WH



ARTIST

The total re-approach for the Artist model has created an arched-top, solid-bodied guitar with a single cutaway. Based on this old and new idea, the ART Series has forged a classic and practical sword, made to win the battle of Rock. Modern refinements include active lo-impedance pickups powered by AA batteries.

ART500 DVS

- 1pc ART Mahogany set-in neck
- Quilted Maple top/Mahogany body
- Medium frets
- Gibraltar II bridge
- Quik Change III tailpiece
- LZ1-N (H) neck pu
- LZ1-B (H) bridge pu
- color : DVS

THE SIMPLE TRUTH:

- Set-neck construction, superior hardware, warm mahogany tone and sustain.
- Ibanez original, active LoZ pickups conduct powerful string choir.



ART320 TGB

- ART Mahogany set-in neck
- Flamed Maple top/Mahogany body
- Medium frets
- Gibraltar II bridge
- Quik Change III tailpiece
- LZ1-N (H) neck pu
- LZ1-B (H) bridge pu
- color : TGB



ART120 BK

- ART Mahogany set-in neck
- Maple top/Mahogany body
- Medium frets
- Gibraltar II bridge
- Quik Change III tailpiece
- LZ1-N (H) neck pu
- LZ1-B (H) bridge pu
- color : BK, WH



ART120 WH

- ART Mahogany set-in neck
- Maple top/Mahogany body
- Medium frets
- Gibraltar II bridge
- Quik Change III tailpiece
- LZ1-N (H) neck pu
- LZ1-B (H) bridge pu
- color : BK, WH



The deluxe ART500 features the luxurious control knobs and pickup rings made out of rosewood.



ART500/ART500 Artist Custom models feature smoothed neck heel for playing comfort and increased accessibility to the higher frets.



Multiple black body binding enhances the body design of the ART120 with the sharp cutaway.



Ibanez original LoZ pickups have made the active pickup sounds accessible for anyone from starters to professionals. Operated by AA batteries, which are more widely available than traditional 9V batteries.



ICT700 BK

- Spc Wizard II Maple/Walnut neck-thru
- Mahogany body
- Jumbo frets
- Gibraltar Custom bridge
- DiMarzio® D Activator™ (H) neck pu
- DiMarzio® D Activator™ (H) bridge pu
- color : BK, WH

ICT700 WH

- Spc Wizard II Maple/Walnut neck-thru
- Mahogany body
- Jumbo frets
- Gibraltar Custom bridge
- DiMarzio® D Activator™ (H) neck pu
- DiMarzio® D Activator™ (H) bridge pu
- color : BK, WH

THE SIMPLE TRUTH:

- X-shape Xiphos and the legendary Iceman feature neck-thru construction and reverse headstocks to emphasize the extreme.
- The DiMarzio® D Activator™ pickups pump out the vicious tonal characteristics of the X, including the new XPT707FX, the 7-string version of the Xiphos.

XPT700 RCM

- Spc Wizard II Maple/Walnut neck-thru
- Mahogany body
- Jumbo frets
- Edge II bridge
- DiMarzio® D Activator™ (H) neck pu
- DiMarzio® D Activator™ (H) bridge pu
- color : RCM

XPT707FX GCM

- Spc Wizard II Maple/Walnut neck-thru
- Mahogany body
- Jumbo frets
- Gibraltar Custom 7 bridge
- DiMarzio® D Activator 7™ (H) neck pu
- DiMarzio® D Activator 7™ (H) bridge pu
- color : GCM



Neck-thru construction on the ICT700 provides massive sustain and playing comfort.



The ICT and XPT models are equipped with DiMarzio® D Activator™ pickups.



The XPT707FX's "Gray Chameleon" finish changes color as you move in front of the light.



The XPT707FX features 7 string version of Gibraltar Custom bridge.



HRG

H. R. GIGER

H.R. Giger's vision of death is not for the squeamish. It's black as night, covered by textured scales and an elongated spine which wraps itself, snake-like, around the skulls of the past. Marry this imagery with a guitar as fierce as an Edge III-equipped RG and you have the Ibanez RGHRG1BKF, an instrument as darkly chilling as it is beautiful.



The RGHRG1's special textured head stock featuring the same Biomechanical Matrix design.



Gold Mirror Neck Inlay on RGHRG1.



The knobs also feature Giger's original design, "Bomber 1" from his work in the early 80's.



Hi-tech engraving process uses laser to sculpt Giger's Biomechanical Matrix design onto the body top.



THE SIMPLE TRUTH:

- Black Flat Finish.
- 3pc Wizard II neck.
- Basswood body with laser-engraved H.R. Giger design.
- H.R. Giger-designed inlays.

RGHRG1 BKF

- 3pc Wizard II neck
- Basswood body
- Jumbo frets
- Edge II bridge
- INF1 (H) neck pu
- INF2 (H) bridge pu (w/ Giger design)
- color : BKF



E-GEN

HERMAN LI



Blazing brightly on a stage in front of thousands, Dragonforce's Herman Li's speed and heat on the guitar is absolutely radioactive. Li demanded a guitar that would let him incinerate solos to a blackened crisp and Ibanez was happy to oblige. The E-GEN is a flame thrower forged in the flames of hell, an S with nuclear capabilities. Safety gloves not included.

"The E-Gen is THE electric guitar of the new generation. Fusing incredible diverse tones, playability and innovation into one single beautiful instrument, this is the sickest guitar I have ever played. Now I can take my guitar skills to the next level. From crystal clear sounds to shredding ripping metal, the E-Gen does it all!" -Herman Li-

THE SIMPLE TRUTH:

- Maple/Walnut 24-fret neck
- Mahogany body with flamed maple top
- DiMarzio® Custom pickups
- Scalloped fretboard—20th-24th
- Edge-Zero bridge
- Special Upper Horn Grip
- Gold hardware

EGEN1 TVF

- 3pc EGEN neck
- Flamed Maple top/Mahogany body
- Jumbo frets
- Edge-Zero bridge
- DiMarzio® HLM (H) neck pu
- DiMarzio® HLM (S) mid pu
- DiMarzio® HLM (H) bridge pu
- color : TVF



STM1

SAM TOTMAN

The Strength card represents a high level of control and few guitarists have the shred skills and unshakable nerve like Dragonforce's Sam Totman. Sam's new Iceman-shaped STM1 is a 24-fret mahogany monster made for only the strongest of metal warriors.

THE SIMPLE TRUTH:

- Iceman-shaped mahogany body
- Maple/Walnut 24-fret neck
- Edge III tremolo
- DiMarzio® Evolution pickups
- Chrome hardware

STM1 WH

- 3pc Wizard II Maple/Walnut neck-thru
- Mahogany body
- Jumbo fret
- EDGE III bridge
- DiMarzio® Evolution™ (H) neck pu
- DiMarzio® Evolution™ (H) bridge pu
- color : WH



JS JOE SATRIANI

The Magician's power is transformation through the use of will and sheer talent. This is power of a dangerous sort which commands the material world and the high-wire acts he performs often seem like dark magic. With its clean, body-fitting design, the JS a deceptively simple yet potent divining rod, able to raise impossible flurries of notes and melodies from the fertile pastures of your rock guitar dreams.

JS1200 CA

- 1pc JS neck *Beats*
- Basswood body
- W/6105 frets
- Edge Pro bridge
- DiMarzio® Paf Joe® (H) neck pu
- DiMarzio® Fred® (H) bridge pu
- color : CA

JS1000 BTB

- 1pc JS neck *Beats*
- Basswood body
- W/6105 frets
- Edge Pro bridge
- DiMarzio® Paf Pro® (H) neck pu
- DiMarzio® Fred® (H) bridge pu
- color : BTB



JS1600 PSV

- 1pc JS neck *Beats*
- Mahogany body
- W/6105 frets
- Fixed bridge
- DiMarzio® Paf Pro® (H) neck pu
- DiMarzio® Fred® (H) bridge pu
- color : PSV

THE SIMPLE TRUTH:

- Multi-radius Prestige neck (JS1000's) is an exact digital rendering of the neck on Joe's favorite axe.
- High-pass filter on JS1000's volume pots maintains highs at low volumes.
- Combination 25 1/2" neck scale and DiMarzio® or Ibanez pickups provides wide dynamic range and startling versatility.

JS100 BK

- 1pc JS neck
- Basswood body
- Large frets
- Edge III bridge
- IBZ AH1 (H) neck pu
- IBZ AH2 (H) bridge pu
- color : BK, TR

JS100 TR

- 1pc JS neck
- Basswood body
- Large frets
- Edge III bridge
- IBZ AH1 (H) neck pu
- IBZ AH2 (H) bridge pu
- color : BK, TR



JEM STEVE VAI

One of the world's most iconic guitars, the JEM pushes the boundaries of what a guitar can and should do. In the hands of the adventurous musical warlock, the JEM is the scepter that opens doors, alters time and space and reveals the mysteries of the forbidden notes. Grab that monkey grip and hang on for dear life.

JEM555 BK



JEM555 WH

- 3pc JEM neck
- American Basswood body
- Jumbo frets
- Edge III bridge
- DiMarzio® Evolution® (H) neck pu
- DiMarzio® Evolution® (S) mid pu
- DiMarzio® Evolution® (H) bridge pu
- color : BK, WH



JEM7V WH

- Epic JEM Maple/Walnut neck *Beats*
- Alder body
- W/6105 frets
- Edge Pro bridge
- DiMarzio® Evolution® (H) neck pu
- DiMarzio® Evolution® (S) mid pu
- DiMarzio® Evolution® (H) bridge pu
- color : WH



JEM77V BK

- 5pc JEM Maple/Walnut neck *Beats*
- Basswood body
- W/6105 frets
- Edge Pro bridge
- DiMarzio® Breed™ (H) neck pu
- DiMarzio® Breed™ (S) mid pu
- DiMarzio® Breed™ (H) bridge pu
- color : BK



THE SIMPLE TRUTH:

- Contoured body with 24-fret Prestige neck provides easy access to all registers.
- Deep-rooted Lion's Claw tremolo cavities allow pitches to be radically lowered and raised.
- Vai's choice of specific DiMarzio® pickups for each model, combined with Ibanez Split-5 wiring provide incredible tonal versatility.
- Steve Vai's Universe—the guitar that ignited the 7-string revolution—allows almost effortless transition from 6- to 7-string techniques.



UV777P BK

- 5pc UV Maple/Walnut neck *Beats*
- American Basswood body
- Jumbo frets
- Edge Pro 7 bridge
- DiMarzio® Blaze II® (H) neck pu
- DiMarzio® Blaze II® (S) mid pu
- DiMarzio® Blaze II® (H) bridge pu
- color : BK



PGM

PAUL GILBERT

Up in the black sky, surrounded the dark emptiness of space, the star shines down ray after ray of brilliant white light. The light speeds to earth in waves of crackling, electric musical notes: too fast to count, too bright to look at and beyond the sonic spectrum of mere mortal ears. The star smiles, puts down his Signature PGM and waits patiently for the next night, when he can shine again.



THE SIMPLE TRUTH:

- 24-fret PGM Prestige neck is 2mm thicker than our super-thin Wizard necks.
- Paul's specific choice of different DiMarzio® pickups, HSH configuration and 5-way switching offers the multitude of tones required for his mastery of speed and style.
- Paul's signature painted F-holes.
- Thru-body stringing provides tighter string tension and strong sustain.

PGM301 WH

- 5pc PGM Maple/Walnut neck *Wizard*
- Basswood body
- Jumbo frets
- Fixed bridge
- DiMarzio® Paf Pro® (H) neck pu
- DiMarzio® Jam Single (S) mid pu
- DiMarzio® Paf Pro® (H) bridge pu
- color : WH



APEX

munky

Don't draw this card unless you're ready to cause some serious mayhem. The Apex, despite its lofty name, represents the darkness lurking at the bottom of the well. Munky's Signature beast harnesses the power at the lowest point of the arc of the pendulum, right before the scythe blade snaps back up to shred the unbelievers. Lucky seven? Not so sure about that.

THE SIMPLE TRUTH:

- A-D-G-C-F-A-D factory tuning for Munky's signature low-end crunch.
- Korn-designed U-bar trem allows radical trem effects without palming the fine tuners. Can be easily switched out with optional standard arm.
- Unique Biker Black textured finish on APEX1.
- Rigid and accurate Tone Pros® bridge on APEX2.



APEX1 BBK

- 5pc APEX Maple/Wenge neck *Wizard*
- Mahogany body
- Jumbo frets
- Edge Pro 7 bridge w/U-bar
- DiMarzio® Paf 7® (H) neck pu
- DiMarzio® Paf 7® (H) bridge pu
- color : BBK

APEX2 GSF

- 5pc Wizard II-7 Maple/Walnut neck
- Mahogany body
- Jumbo frets
- Tone Pros® 7 bridge
- DiMarzio® Paf 7® (H) neck pu
- DiMarzio® Paf 7® (H) bridge pu
- color : GSF

MTM

MICK THOMSON

Terrifying power, un-masked at last. Don't avert your eyes. Step inside the pentacle and stare right into the molten pools of bubbling distortion. Don't wait for the wall of sound to subside. It lasts forever. Mick Thomson's Signature Model MTM's: Once you've seen the true face of destruction, you're never be the same.

THE SIMPLE TRUTH:

- 5pc Wizard thru-neck (MTM1) and mahogany body pump out full, fat tone with endless sustain.
- Fixed Edge bridge offers double-locking stability with fixed bridge simplicity.
- MTM2 offers signature design with 5-ply bolt-on neck and affordable price.
- High-gain Seymour Duncan pickups in the MTM1.
- Factory-equipped with heavy strings tuned to C# tuning with a dropped B: (low to high) B-F#-B-E-G#-C#.



MTM1BK

MTM1BR

- 5pc Wizard II Maple/Walnut neck-thru
- Mahogany body
- Jumbo frets
- Fixed Edge bridge
- Seymour Duncan® Blackout (H) neck pu
- Seymour Duncan® Blackout (H) bridge pu
- color : BK, BR

MTM2 BK

- 5pc Wizard II Maple/Walnut neck
- Mahogany body
- Jumbo frets
- Fixed Edge II bridge
- V7 (H) neck pu
- V8 (H) bridge pu
- color : BK



MATT BACHAND

On the razor's edge of your imagination, like a skull-faced dream that suddenly appears out of the darkness, the Matt Bachand Signature Model MBM1 Prestige comes slashing into view, only to disappear back into the void, leaving the echoes of sonic turbulence and the glint of screaming steel.

THE SIMPLE TRUTH:

- Arched top and 5pc Wizard neck with Prestige finishing and jumbo frets for supreme comfort.
- Massive Gibraltar Plus fixed bridge allows wide range of intonation adjustment needed for heavy strings.
- Simple, one volume knob electronics.
- Gotoh precision tuning machines.
- Matt Bachand's signature skull graphic.

MBM1 BK

- 5pc Wizard Maple/Walnut neck *Wizard*
- Mahogany body
- Jumbo frets
- Gibraltar Plus bridge
- EMG® 60 (H) neck pu
- EMG® 81 (H) bridge pu
- color : BK





ORM OMAR RODRIGUEZ-LOPEZ

Created with traditional looks in mind, this guitar had to excel in just about any situation to work in The Mars Volta. If anyone knows how to push a guitar to its limits, it's Omar Rodriguez-Lopez. The new ORM passed every test.



ORM1 BK

- 3pc ORM Mahogany neck
- Mahogany body
- Medium frets
- Gibraltar II bridge
- ACH-BL (H) bridge pu
- color : BK



ORM1L BK

- 3pc ORM Mahogany neck
- Mahogany body
- Medium frets
- Gibraltar II bridge
- ACH-BL (H) bridge pu
- color : BK

THE SIMPLE TRUTH:

- 24" Scale length neck for increased playing comfort.
- Ultra-comfortable contoured body shape.
- High-output mini-humbucker for blazing tone that cuts through the mix.



NDM NOODLES

A black and silver vehicle driven by fast and powerful sonic stallions, ready to charge into the fray, strong and confident. Borne from punk rock attitude but built for all things aggressive, the NDM's mirrored skull Offspring emblem says it all: Flaming Death or Glory!

THE SIMPLE TRUTH:

- Fixed bridge with steel saddles offers durability, simplicity and strong sustain.
- Ibanez Infinity pickups in hum-sing-hum configuration and special 5-way switching pump out a vast assortment of tones.



NDM2 BK

- 3pc NDM neck
- Basswood body
- Large frets
- Fixed bridge
- IBZ INF1 (H) neck pu
- IBZ INF51 (S) mid pu
- IBZ INF2 (H) bridge pu
- color : BK

IBANEZ ARTISTS



Dave Aguilera



Matt Lab (The Oct)



Tony Dabano (Evanescent)



Waj Barrie (Destiny Destiny Destiny)



Kesh Carpenter (The Head)



Diego Cabezas (Dime Nines)



Scott Searough (Dying Thrust)



Fletcher Drage (The Wind)



David Frenson (Daughter of Liar's Lie)



Marty Friedman



Adriel Garcia (City Steps)



Chad Golinberg (The)



Gravy (Mud in the Road)



Marlon Hagstrom (The Maggot)



Bill Hackett (All That Remains)



Head (The)



Nick Ripa (The Low Dying)



Doctor Holland (The Ring)



Steve Hall (The Quayside)



Basia (The)



Jon Kite (The)



Kirk Kerkis (The)



Eric Krasno (The)



Brian Lapple (The)



Eyal Levi (The)



Baz McGrath (The)



Larry Mitchell



Kristian Novena (The)



Matt Roberts (The)



Sarge (The)



Jerecek Scott (The)



Barry Stock (The)



Mohammed Sukonez (The)



Kee Seal (The)



Freddie Thordental (The)



GB

THE SIMPLE TRUTH:

GEORGE BENSON

"The GB15TR is a fresh idea with a simple approach. Don't be fooled by the single pickup, one pickup is all this guitar needs... you know what I'm talkin' about...ha ha!"

- Our longest running artist signature model celebrates its Thirtieth Anniversary in the U.S.A.
- Floating pickups, thicker top and a smaller full-acoustic body reject feedback.
- GB15TR adds single-coil tone to the array of GB10 colors.
- GB200 features full-sized, full-acoustic body and standard pickup installation for more traditional jazz gigs.
- Deluxe hardshell case included. GB15 includes deluxe gig bag.



GB15 TR

- GB15 neck *Beats*
- Spruce top/Maple back/sides
- Medium frets
- Ebony bridge
- GB special (H) neck pu
- depth: 75mm at tail
- color : TR



GB10 BS

- GB neck *Beats*
- Spruce top/Maple back/sides
- Medium frets
- Ebony bridge
- GB special (H) neck pu
- GB special (H) bridge pu
- depth: 65mm at tail
- color : BS, NT



GB10 NT

- GB neck *Beats*
- Spruce top/Maple back/sides
- Medium frets
- Ebony bridge
- GB special (H) neck pu
- GB special (H) bridge pu
- depth: 65mm at tail
- color : BS, NT



GB200 BST

- GB neck *Beats*
- Spruce top/Maple back/sides
- Medium frets
- Ebony bridge
- Super 58 (H) neck pu
- Super 58 (H) bridge pu
- depth: 83mm at tail
- color : BST

THE SIMPLE TRUTH:

- The size of the traditional full acoustic jazz guitar but slimmer for better comfort, projection, and feedback rejection.
- Super 58 pickups feature the classic, warm tone. The PM120 features Silent 58 pickups of Super 58's with an anti-feedback treatment.
- Deluxe hardshell case included.



PM

PAT METHENY

"It took some time, several prototypes and perseverance from all corners, but the final results are excellent. I love playing all of the various Ibanez PM models and am quite proud to be associated with them."



PM35 NT

- Spe Maple /Bubinga set-in neck
- Maple top/back/sides
- Medium frets
- ART-1 bridge
- KT30 tailpiece
- Super 58 Custom (H) neck pu
- depth: 70mm at tail
- color : NT



PM120 NT

- PM neck *Beats*
- Maple top/back/sides
- Medium frets
- Gotoh® 103B bridge
- Silent 58 (H) neck pu
- Silent 58 (H) bridge pu
- depth: 50mm at tail
- color : BK, NT



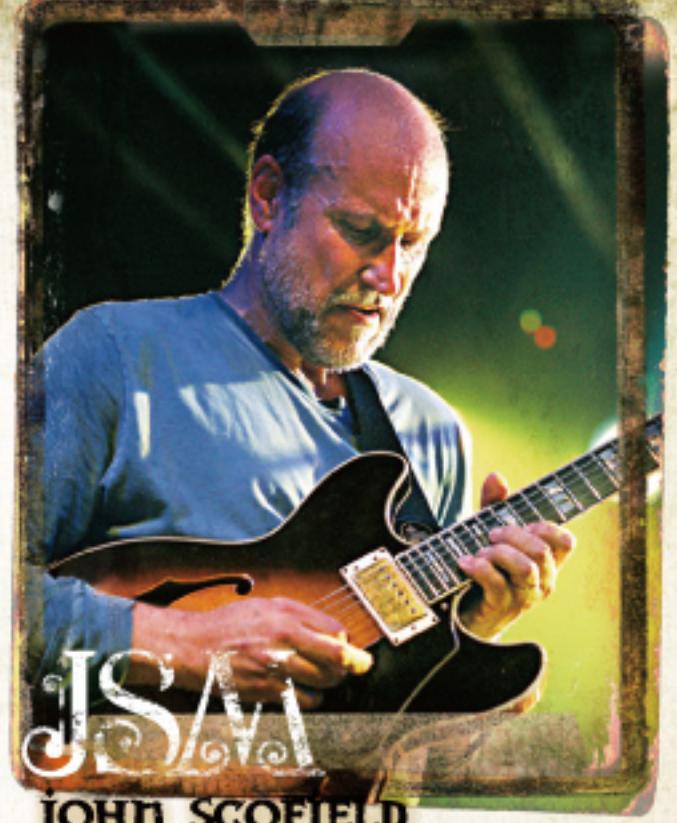
PM100 BK

- PM neck *Beats*
- Maple top/back/sides
- Medium frets
- Gotoh® 103B bridge
- Super 58 (H) neck pu
- depth: 80mm at tail
- color : BK



JSM100 VT

- JSM neck *Beats*
- Flamed maple top /Maple back/sides
- Jumbo frets
- Gotoh® 510BN bridge
- Super 58 (H) neck pu
- Super 58 (H) bridge pu
- depth: 43mm at tail
- color : VT



JSM

JOHN SCOFIELD

"The JSM100 is a perfect hybrid of a solid-body and an archtop. I love my guitar. We've grown up together in this business. I do the thinking, but it does the talking. We're quite a pair."

THE SIMPLE TRUTH:

- Substantial soundblock and a rigid top and body reject feedback.
- Sco's preference of Artist-style "castle" headstock to complement AS body for better tonal balance.
- Super 58 pickups produce classic, warm and versatile tone.
- Side mount output jack offers easier performance and offers less chance of damage than traditional semi-acoustic top mount jack.
- Deluxe hardshell case included

ARTCORE CUSTOM

When the smoke had cleared in 2002, players, music store owners and the music industry press were stunned by the debut of the affordable Artcores. And in 2005, when Ibanez lifted the curtain on the exquisite Artcore Customs, there were murmurings of witchcraft and sorcery. How else could such beautiful instruments be produced at such alluring and enchanting prices?

THE SIMPLE TRUTH:

- The true-full-hollow AF models feature traditional pickup installation for traditional jazz gigs.
- AS103NT offers semi-hollow sustain, power, and feedback resistance.
- Deluxe hardshell case included.



Artcore Custom models feature 5pc maple/bubinga neck for extra strength and stability.



The Quik Change Ultra tailpiece features traditional looks but provides untraditionally quick and accurate fine-tuning adjustments.



AF125 NT

- 5pc Artcore Maple /Bubinga set-in neck
- Quilted Maple top/back/sides
- Medium frets
- ART-1 bridge
- VT04 Custom tailpiece
- Super 58 Custom (H) neck pu
- Super 58 Custom (H) bridge pu
- depth: 70mm at tail
- color : AMB, NT



AF105 NT

- 5pc Artcore Maple /Bubinga set-in neck
- Flamed Maple top/back/sides
- Medium frets
- ART-1 bridge
- VT04 Custom tailpiece
- Super 58 Custom (H) neck pu
- Super 58 Custom (H) bridge pu
- depth: 70mm at tail
- color : NT



AF125 AMB

- 5pc Artcore Maple /Bubinga set-in neck
- Quilted Maple top/back/sides
- Medium frets
- ART-1 bridge
- VT04 Custom tailpiece
- Super 58 Custom (H) neck pu
- Super 58 Custom (H) bridge pu
- depth: 70mm at tail
- color : AMB, NT



AS103 AMB

- 5pc Artcore Maple /Bubinga set-in neck
- Flamed Maple top/back/sides
- Medium frets
- ART-1 bridge
- Quik Change Ultra tailpiece
- Super 58 Custom (H) neck pu
- Super 58 Custom (H) bridge pu
- depth: 43mm at tail
- color : AMB, NT



AS103 NT

- 5pc Artcore Maple /Bubinga set-in neck
- Flamed Maple top/back/sides
- Medium frets
- ART-1 bridge
- Quik Change Ultra tailpiece
- Super 58 Custom (H) neck pu
- Super 58 Custom (H) bridge pu
- depth: 43mm at tail
- color : AMB, NT



AG AK



AG95 TRD

- 3pc Arcore Mahogany /Maple set-in neck
- Figured Bubinga top/back/sides
- Medium frets
- ART-1 bridge
- VT1000X tailpiece
- ACH1 (H) neck pu
- ACH2 (H) bridge pu
- depth: 70mm at tail
- color : TRD

AG75 BS

- Arcore Mahogany set-in neck
- Maple top/back/sides
- Medium frets
- ART-1 bridge
- VT60 tailpiece
- ACH1 (H) neck pu
- ACH2 (H) bridge pu
- depth: 70mm at tail
- color : BS

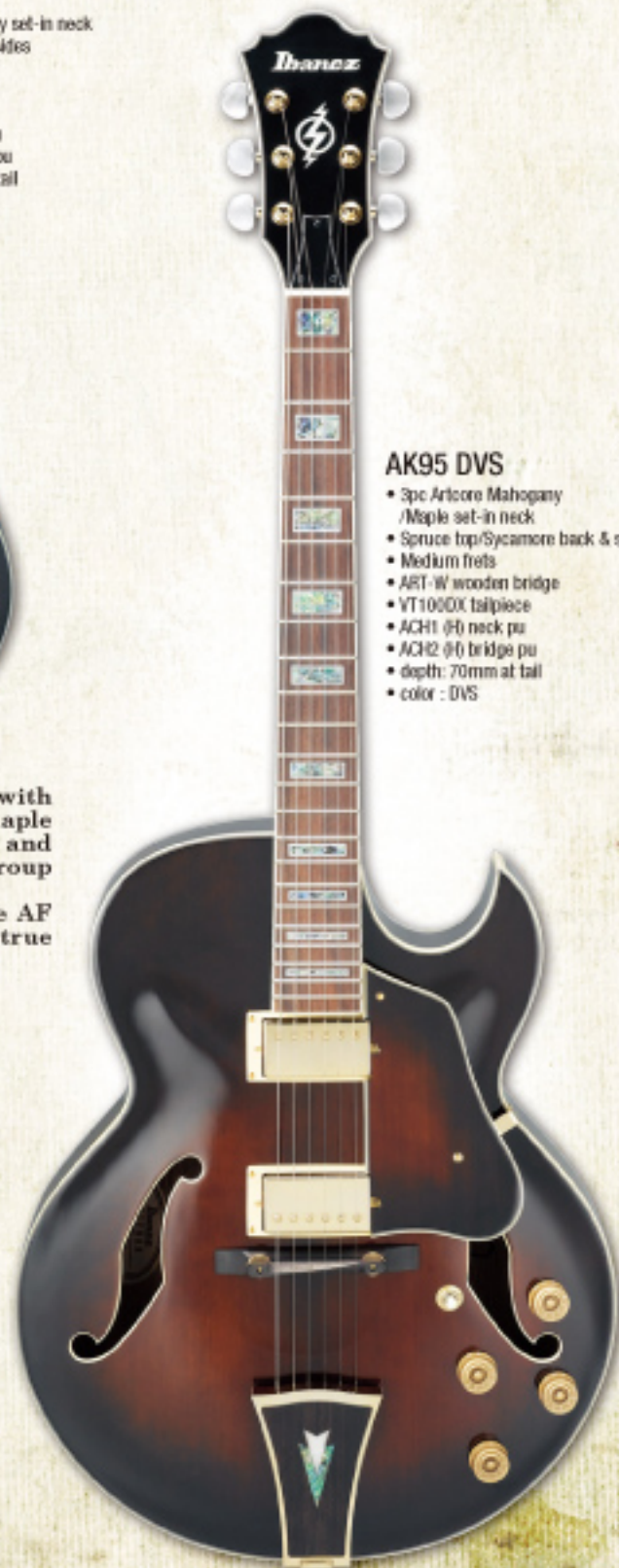
The true full-hollow AK continues this artisan tradition with respect and detail. The AK eschews the brighter sound of maple tops and metal bridges and replaces them with spruce tops and all-wood bridges for the warmer sound favored in small group and jazz trio formats. Our AG body size offers a slightly smaller width than the AF traditional dimensions, but with the same depth and the true full-hollow body construction.

THE SIMPLE TRUTH:

- True full hollow construction
- AG95/AK95 feature 3pc mahogany neck, gold parts and Abalone inlays elaborated on the fingerboard and tailpiece.



Arcore Deluxe models feature VT1000X tailpiece decorated in gold.



AK95 DVS

- 3pc Arcore Mahogany /Maple set-in neck
- Spruce top/Sycamore back & sides
- Medium frets
- ART-W wooden bridge
- VT1000X tailpiece
- ACH1 (H) neck pu
- ACH2 (H) bridge pu
- depth: 70mm at tail
- color : DVS

AF

The AF is one of our most traditional full-acoustic lines with a large full hollow body that's truly full-hollow. Unlike many so-called "full acoustics" which feature soundblocks in the body, all Ibanez full acoustic guitars are completely full-hollow for the rich, complex tones you can only get from a true, full-hollow guitar.

THE SIMPLE TRUTH:

- The traditional large "jazz box" (but with 22 instead of the traditional 20 frets).
- 95 series models offer all-flamed sycamore bodies, gold hardware, abalone inlays and 3pc necks.



AF95 VLS

- 3pc Arcore Mahogany/Maple set-in neck
- Flamed Sycamore top/back/sides
- Medium frets
- ART-1 bridge
- VT1000X tailpiece
- ACH1 (H) neck pu
- ACH2 (H) bridge pu
- depth: 70mm at tail
- color : VLS

AF75TDG IV

- Arcore Mahogany set-in neck
- Maple top/back/sides
- Medium frets
- ART-2 Roller bridge
- VBF70 vibrato
- ACH1 (H) neck pu
- ACH2 (H) bridge pu
- depth: 70mm at tail
- color : IV

*VBF70 Vintage Vibrato design licensed by Fred W. Gotsch Enterprises, Ltd. in the U.S.



Newly designed Tailpiece on AF75.



AF75 BS

- Arcore Mahogany set-in neck
- Maple top/back/sides
- Medium frets
- ART-1 bridge
- VT60 tailpiece
- ACH1 (H) neck pu
- ACH2 (H) bridge pu
- depth: 70mm at tail
- color : BS

AF75D TOR

- Arcore Mahogany set-in neck
- Maple top/back/sides
- Medium frets
- ART-1 bridge
- VT60 tailpiece
- ACH1 (H) neck pu
- ACH2 (H) bridge pu
- depth: 70mm at tail
- color : TOR

AFS

Always stick to tradition. At Ibanez, our tradition is to start with traditional models as the theme and then play our own variations such as the AFS. Our AFS starts with the classic large body width of the traditional AF, but utilizes a one-inch thinner depth for increased comfort and more mid-range punch.

AFS95T MBU

- 3pc Artcore Mahogany/Maple set-in neck
- Flamed Sycamore top/back/sides
- Medium frets
- VBF70 vibrato
- VBF70 tremolo
- ACH1 (H) neck pu
- ACH2 (H) bridge pu
- depth: 43mm at tail
- color : MBU



AFS85T NT

- 3pc Artcore Mahogany/Maple set-in neck
- Cordia top/back/sides
- Medium frets
- ART-2 Roller bridge
- VBF70 vibrato
- ACH1 (H) neck pu
- ACH2 (H) bridge pu
- depth: 43mm at tail
- color : NT



AFS75T TRD

- Artcore Mahogany set-in neck
- Maple top/back/sides
- Medium frets
- ART-2 Roller bridge
- VBF70 vibrato
- ACH1 (H) neck pu
- ACH2 (H) bridge pu
- depth: 43mm at tail
- color : TRD



AS

The defining feature of the semi-acoustic guitar is its sustain block (or sound block) into which the pickups are mounted for increased sustain and feedback elimination. The semi-acoustic is one of the most versatile electric guitars and can be found in every genre of popular music from jazz to rock and pop to punk.

THE SIMPLE TRUTH:

- Classic semi-acoustic construction, size and sound.
- Solid, stable and fully adjustable bridge and tailpiece.

AS93 VLS

- 3pc Artcore Mahogany/Maple set-in neck
- Flamed Sycamore top/back/sides
- Medium frets
- ART-1 bridge
- Quik Change III tailpiece
- ACH1 (H) neck pu
- ACH2 (H) bridge pu
- depth: 43mm at tail
- color : TCR, VLS



AS93 TCR

- 3pc Artcore Mahogany/Maple set-in neck
- Flamed Sycamore top/back/sides
- Medium frets
- ART-1 bridge
- Quik Change III tailpiece
- ACH1 (H) neck pu
- ACH2 (H) bridge pu
- depth: 43mm at tail
- color : TCR, VLS



AS93C NT

- 3pc Artcore Mahogany/Maple set-in neck
- Cocobolo top/back/sides
- Medium frets
- ART-1 bridge
- Quik Change III tailpiece
- ACH1 (H) neck pu
- ACH2 (H) bridge pu
- depth: 43mm at tail
- color : NT



AS73 BS

- Artcore Mahogany set-in neck
- Maple top/back/sides
- Medium frets
- ART-1 bridge
- Quik Change III tailpiece
- ACH1 (H) neck pu
- ACH2 (H) bridge pu
- depth: 43mm at tail
- color : ATF, BS



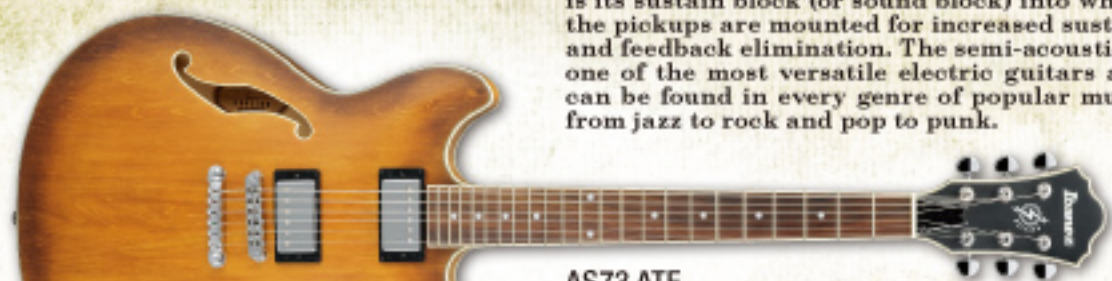
THE SIMPLE TRUTH:

- True full-hollow body construction.
- The same traditional body width of the Artcore AF, but one-inch thinner for increased comfort and more mid-range punch.
- Ibanez Vintage Vibrato (licensed by Fred Gretsch Enterprises in the U.S.) with roller saddles eliminates the tuning problems of traditional systems.

VBF70 Vintage Vibrato design licensed by Fred W. Gretsch Enterprises, LLC in the U.S.

The defining feature of the semi-acoustic guitar is its sustain block (or sound block) into which the pickups are mounted for increased sustain and feedback elimination. The semi-acoustic is one of the most versatile electric guitars and can be found in every genre of popular music from jazz to rock and pop to punk.

AS



AS73 ATF

- Arcore Mahogany set-in neck
- Maple top/back/sides
- Medium frets
- ART-1 bridge
- Quik Change II tailpiece
- ACH1 (H) neck pu
- ACH2 (H) bridge pu
- depth: 43mm at tail
- color : ATF, BS



AS73B BK

- Arcore Mahogany set-in neck
- Maple top/back/sides
- Medium frets
- ART-1 bridge
- Quik Change II tailpiece
- ACH1-S (H) neck pu
- ACH2-S (H) bridge pu
- depth: 43mm at tail
- color : BK

AS73T TCR

- Arcore Mahogany set-in neck
- Maple top/back/sides
- Medium frets
- ART-2 Roller bridge
- VBS80 vibrato
- ACH1 (H) neck pu
- ACH2 (H) bridge pu
- depth: 43mm at tail
- color : TCR

THE SIMPLE TRUTH:

- Classic semi-acoustic construction, size and sound.
- Solid, stable and fully adjustable bridge and tailpiece.



VBS80 Vibrato
Ibanez VBS80 Vintage Vibrato for semi acoustic guitars



The multi black binding makes the outline stand out.



AJD

It's perfect for smaller players, hyperactive stage performers or anyone else who wants the traditional semi-acoustic elements but not the traditional size.

THE SIMPLE TRUTH:

- The full tones, strong sustain and light weight of a semi-acoustic.
- The comfortable size and standout rock shape normally associated with a solid-body.
- Double-cutaway for easy access to upper frets.



Quik Change Ultra Tailpiece
The Quik Change Ultra Tailpiece on the AJD91 features traditional look but provides untraditionally quick and accurate fine-tuning adjustments.



ACT Tremolo
The first knife-edge tremolo designed for semi-acoustic guitar, the ACT eliminates the tremolo cavity that sacrifices the tone. Shorter springs use less vibrating room and contribute to a stiffer arm response. Two ways to install the springs offer choice in string and arm tension. And on top of all that, the ACT is smooth to the touch and string changes are easy.

AJD71 BK

- AJD Mahogany set-in neck
- Maple top/back/sides
- Medium frets
- ACT Tremolo bridge
- ACH1 (H) neck pu
- ACH2 (H) bridge pu
- depth: 43mm at tail
- color : BK



AJD91 VLS

- 3pc AJD Mahogany /Maple set-in neck
- Flamed Maple top/back/sides
- Medium frets
- ART-1 bridge
- Quik Change Ultra Tailpiece
- ACH1 (H) neck pu
- ACH2 (H) bridge pu
- depth: 43mm at tail
- color : VLS



AJD91C NT

- 3pc AJD Mahogany /Maple set-in neck
- Cocobolo top/back/sides
- Medium frets
- ART-1 bridge
- Quik Change Ultra Tailpiece
- ACH1 (H) neck pu
- ACH2 (H) bridge pu
- depth: 43mm at tail
- color : NT



AM

The Artoore AM body shape is an original early '80s Ibanez design that incorporates the classic semi-acoustic shape in a more compact and comfortable body size. It's perfect for smaller players or anyone else who wants the traditional semi-acoustic elements but not the traditional size.

THE SIMPLE TRUTH:

- The full tones, strong sustain and light weight of a semi-acoustic.
- The comfortable size and standout rock shape normally associated with a solid-body.
- Double-cutaway for easy access to upper frets.
- New AM73BBKF features a Black Flat finish, body and neck binding and exposed ACH pickups.

AM73B BKF

- Artoore Mahogany set-in neck
- Maple top/back/sides
- Medium frets
- ART-1 bridge
- Quik Change II tailpiece
- ACH1-S (H) neck pu
- ACH2-S (H) bridge pu
- depth: 43mm at tail
- color: BKF



AGS

A guitar does not have to determine the type of music that is played. Ibanez Artoore has always sought to produce box guitars that rock. The semi-acoustic AGS features the same AG shape but with a thinner body and a soundblock for feedback reduction and increased sustain. The 17th fret neck joint assists easier higher fret access and the flat finishes complement both traditional and non-traditional styles.

THE SIMPLE TRUTH:

- Semi-acoustic body with a feedback-rejecting soundblock that increases sustain.
- 17th fret to the body joint for effortless upper-fret access.
- New AGS83BBGNTF features a Natural Flat finish and Bubinga top/back and sides.

AGS83BBG NTF

- 3pc Artoore Mahogany /Maple set-in neck
- Bubinga top/back/sides
- Medium frets
- ART-1 bridge
- Quik Change III tailpiece
- ACH1 (H) neck pu
- ACH2 (H) bridge pu
- depth: 43mm at tail
- color: NTF



AGS83B ATF

- 3pc Artoore Mahogany /Maple set-in neck
- Flamed Sycamore top/back/sides
- Medium frets
- ART-1 bridge
- Quik Change III tailpiece
- ACH1 (H) neck pu
- ACH2 (H) bridge pu
- depth: 43mm at tail
- color: ATF



AGS73B TRF

- Artoore Mahogany set-in neck
- Maple top/back/sides
- Medium frets
- ART-1 bridge
- Quik Change II tailpiece
- ACH1 (H) neck pu
- ACH2 (H) bridge pu
- depth: 43mm at tail
- color: TRF



AGS73BT TKF

- Artoore Mahogany set-in neck
- Maple top/back/sides
- Medium frets
- ART-2 Roller bridge
- VSS80 tremolo
- ACH1 (H) neck pu
- ACH2 (H) bridge pu
- depth: 43mm at tail
- color: TKF



The multi black binding makes the outline of the AGS73B stand out.



The super-thin AGS73B features a 17-fret body joint and an extra-deep cutaway that makes it the right choice for players who want to spend more time, with ease and comfort, in the upper regions.

IBANEZ ARTISTS



Paul Wiggner (Between the Bars and Ink)



Death Waring (Between the Bars and Ink)



Dave Weiner



Edward Aguilar (Star Academy)



Lolo Abreu (MAMETA DE CUBA METRO)



Steve Anderson (Photos)



Yvan Anselino



Horco Kik Beltrán (CIVIC)



Ricky Bellini (I Like How You Talk)



Sergio Pini



Rod Altagong (Bansurap (Dead Fish Talking))



Paul Dutton (PUL)



Martin Ewan (Mercury)



Dan Carter (The Lady Mine)



Cesare (Eletto to Star in Text)



Pop Warral (Das wamparapachal (Book to Star in Text))



Chaky (MILK)



Alex Colla-Tocchini (Agnostic Loadback)



Henrik Beltrán (Solo / Studio)



Max Flook (Lil'Koyote)



Per Gade (Ely Gadeh (W to Black))



Richard Gohmert (To Gohmert's Black)



Peter Goversen (Patched)



Juan Carlos Jimenez Gomez (MALD)



Chris Gears (Phonic)



Tony Hugland



Tony S. Hernandez (Caribops)



Gabriel Hidalgo (Bene Hidalgo Band - El Mapa)



Sander Hook



Wojciech Hoffmann (Farko)



Todd "Terry" Miller (Big Wave)



Kenzie Hsu (GERARD)



James Jarbo (Noxy)



Raze Jelic



Eder Kuznetsov

WEAPON OF MASS EXPRESSION

THE THIN NECK

VIVA LA BASSI!

VIVA A IBANEZ

FOUNDATION

SHAPE

FUTURE!

SHOW THE BASS REVOLUTION

BTB

Prestige

THE BOTTOM LINE

- ★ **35" NECK SCALE PROVIDES SUPERIOR ARTICULATION. PERFECT FOR LOW TUNINGS AND 5- AND 6-STRING BASSES.**
- ★ **NEW CUSTOM BARTOLINI® MK2 PICKUPS AND EQ, EXCLUSIVELY DESIGNED FOR IBANEZ BTB BASSES (BTB670S & BTB470S).**
- ★ **NECK-THRU CONSTRUCTION AND DEEP CUTAWAYS MAKE FOR EFFORTLESS UPPER FRET TRAVEL AND EXPRESSION (BTB1300S, BTB670S & BTB470S).**



Bartolini® PU & EQ

Bartolini® pickups provide deep, warm tones while retaining treble emphasis. The Bartolini® active 3-band EQ features fully independent bass, treble, and mid controls and a mini switch for quick mid-frequency adjustments of 250Hz, 500Hz and 1kHz.



With the new body shape and deeper cutaways, the Maple/Bubinga 5pc neck-thru on BTB Prestige models accentuates the exceptional power, sustain, and playability even more.



BTB1305E NTF

- 5pc BTB5 Maple /Bubinga neck-thru
- Flamed Maple top/Mahogany /Maple back wing body
- Medium frets
- MR-4 bridge (19mm string spacing)
- Bartolini® Custom neck pu
- Bartolini® Custom bridge pu
- Bartolini® Custom 3-band EQ
- Elvir® string
- color : NTF

BTB1306E NTF

- 5pc BTB6 Maple /Bubinga neck-thru
- Flamed Maple top/Mahogany /Maple back wing body
- Medium frets
- MR-4 bridge (17mm string spacing)
- Bartolini® Custom neck pu
- Bartolini® Custom bridge pu
- Bartolini® Custom 3-band EQ
- Elvir® string
- color : NTF



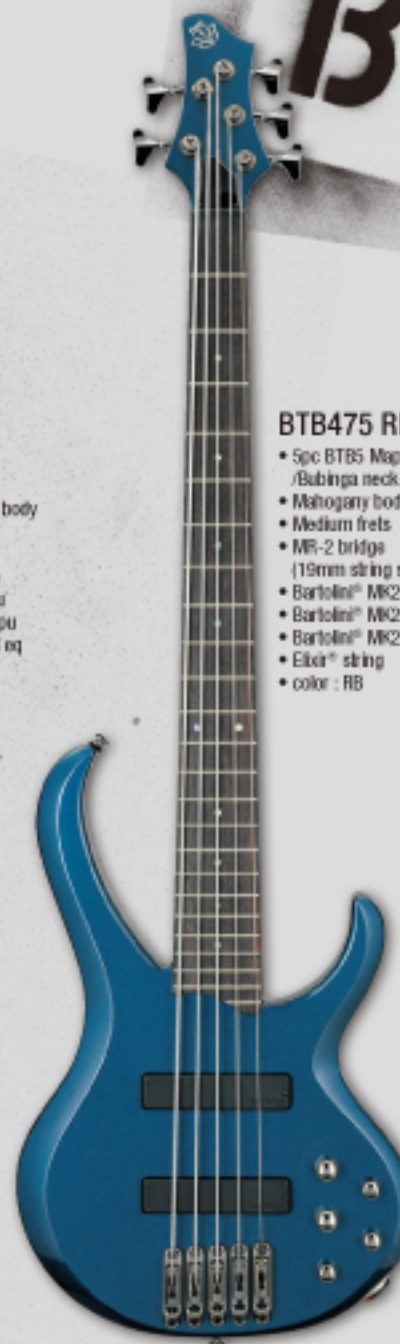
BTB676 NTF

- 5pc BTB6 Maple /Bubinga neck-thru
- Walnut/Light Ash wing body
- Medium frets
- MR-2 bridge (17mm string spacing)
- Bartolini® MK2 neck pu
- Bartolini® MK2 bridge pu
- Bartolini® MK2 3-band eq
- Elvir® string
- color : NTF



BTB675 NTF

- 5pc BTB5 Maple /Bubinga neck-thru
- Walnut/Light Ash wing body
- Medium frets
- MR-2 bridge (19mm string spacing)
- Bartolini® MK2 neck pu
- Bartolini® MK2 bridge pu
- Bartolini® MK2 3-band eq
- Elvir® string
- color : NTF



BTB475 RB

- 5pc BTB5 Maple /Bubinga neck-thru
- Mahogany body
- Medium frets
- MR-2 bridge (19mm string spacing)
- Bartolini® MK2 neck pu
- Bartolini® MK2 bridge pu
- Bartolini® MK2 3-band eq
- Elvir® string
- color : RB



The combination of the newly designed body and neck-thru construction enhance the playability of BTB670s and BTB470s. The Ash body provides for a relatively lighter weight without sacrificing tone (BTB670/675/676).



Neutrik® Jack

Secure high-tech Neutrik® locking jacks are just one of several modern enhancements to the BTB's traditional design.



Bartolini® MK2 PU & 3-band EQ

Precise string balance for the new Bartolini® MK2 pick-up's 4 bobbin construction.

The 2008 BTB basses took the traditional BTB formula--massive body and substantial neck-- and moved it forward. The new BTB Prestige, BTB600s and 400s feature neck-thru construction and deeper cutaways, enhancing playability and perfect balance. BTBs continue to have the right mix of select woods and high-tech appointments that provide the huge tones and sustain that BTB players have come to love.

WEAPON OF MASS EXPRESSION

BTB

BTB

SCORPED OUT TOP + OR



BTB470 IPT

- 5pc BTB4 Maple /Bubinga neck-thru
- Mahogany body
- Medium frets
- MR-2 bridge (19mm string spacing)
- Bartolini® MK2 neck pu
- Bartolini® MK2 bridge pu
- Bartolini® MK2 3-band eq
- Elkir® string
- color : IPT, PW



BTB470 PW

- 5pc BTB4 Maple /Bubinga neck-thru
- Mahogany body
- Medium frets
- MR-2 bridge (19mm string spacing)
- Bartolini® MK2 neck pu
- Bartolini® MK2 bridge pu
- Bartolini® MK2 3-band eq
- Elkir® string
- color : IPT, PW



BTB670 NTF

- 5pc BTB4 Maple /Bubinga neck-thru
- Walnut/Light Ash wing body
- Medium frets
- MR-2 bridge (19mm string spacing)
- Bartolini® MK2 neck pu
- Bartolini® MK2 bridge pu
- Bartolini® MK2 3-band eq
- Elkir® string
- color : NTF



BTB305FM TK

- 3pc BTB5 neck
- Flamed Maple top/Mahogany body
- Medium frets
- B105 bridge(16.5mm string spacing)
- DFR-N5 neck pu
- DFR-B5 bridge pu
- EDS-III 3-band eq
- Elkir® string
- color : TK



BTB205 TYF

- 3pc BTB5 neck
- Mahogany body
- Medium frets
- B105 bridge (16.5mm string spacing)
- DX-N5 neck pu
- DX-B5 bridge pu
- PHAT II eq
- Elkir® string
- color : TYF



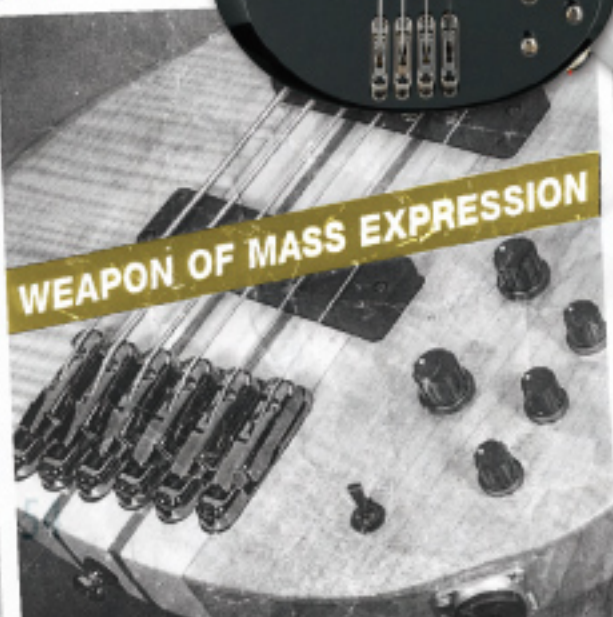
BTB300FM AMB

- 3pc BTB4 neck
- Flamed Maple top/Mahogany body
- Medium frets
- B100 bridge (19mm string spacing)
- DFR-N4 neck pu
- DFR-B4 neck pu
- EDS-III 3-band eq
- Elkir® string
- color : AMB



BTB200 MKF

- 3pc BTB4 neck
- Mahogany body
- Medium frets
- B100 bridge (19mm string spacing)
- DX-N4 neck pu
- DX-B4 bridge pu
- PHAT II eq
- Elkir® string
- color : MKF



WEAPON OF MASS EXPRESSION



Ibanez DFR PU & 3-band EQ
The BTB300s feature the Ibanez DFR passive pickups with 3-band EQ delivering a variety of tones and superior dynamics.



Ibanez DX PU & PHAT II EQ
The Phat II EQ active bass boost easily dials in extra low-end. Ibanez DX humbucking pickups combine quiet power with balanced string output.

SR

Prestige

...NECKS FOR BETT...

...RET ACCESS, STABILITY AND SUS...

SR

**THIN
NECK
FAT
TONE**

Ibanez



SR1005EFM NTF

- 5pc SR5 Maple/Bubinga neck-thru *Body*
- Flamed Maple/Maple wing body
- Medium frets
- MR-4 bridge (16.5mm string spacing)
- Bartolini® Custom neck pu
- Bartolini® Custom bridge pu
- Vari-Mid III HQ 3-band eq
- Elisk® string
- color : NTF



SR1006EFM NTF

- 5pc SR6 Maple/Bubinga neck-thru *Body*
- Flamed Maple/Maple wing body
- Medium frets
- MR-4 bridge (16.5mm string spacing)
- Bartolini® Custom neck pu
- Bartolini® Custom bridge pu
- Vari-Mid III HQ 3-band eq
- Elisk® string
- color : NTF



SR1000EFM NTF

- 5pc SR4 Maple/Bubinga neck-thru *Body*
- Flamed Maple/Maple wing body
- Medium frets
- MR-4 bridge (19mm string spacing)
- Bartolini® Custom neck pu
- Bartolini® Custom bridge pu
- Vari-Mid III HQ 3-band eq
- Elisk® string
- color : NTF



SR700 AM

- 5pc SR4 Jatoba/Bubinga neck
- Figured Maple/Mahogany wing body w/Maple center block
- Medium frets
- Accu-Cast B20 bridge (19mm string spacing)
- Bartolini® MK1 neck pu
- Bartolini® MK1 bridge pu
- Bartolini® MK1 3-band eq
- Elisk® string
- color : AM



SR500 BM

- 5pc SR4 Jatoba/Bubinga neck
- Mahogany body
- Medium frets
- Accu-Cast B20 bridge (19mm string spacing)
- Bartolini® MK1 neck pu
- Bartolini® MK1 bridge pu
- Bartolini® MK1 3-band eq
- Elisk® string
- color : BM

The core Soundgear philosophy has not changed since its debut in 1987 : a modern bass for players who want a thin, fast neck, and the ability to dial in any tone for any genre—from complex electric jazz to raging metal. The 2008 Soundgear has continued this tradition while adding a modern flavor. SRs are available in 4-, 5- and 6-string models with a wide variety of finishes.

THE BOTTOM LINE

- ★ THINNER NECKS WITH THINNER NUTS THAN TRADITIONAL BASSES.
- ★ LIGHTWEIGHT, BALANCED, COMFORT-CONTOURED BODIES.
- ★ ACTIVE EQ'S PERFECTLY MATCHED WITH THE RIGHT CHOICE OF PICKUPS.



New Body Shape
Soundgear's trademark, sleek and beautifully contoured body.



Prestige basses feature U.S.A.-made Bartolini® pickups designed specifically for Ibanez basses, and the Ibanez Vari-Mid EQ, which features sweepable midrange for wide variations in tone.



Gotoh® Machineheads



The fourth generation Mono-Rail design still features complete string-to-string isolation so each string vibrates true without interference from the others.



Sleek body contours provide unparalleled playing comfort on even the longest gigs.



Bartolini® MK1 PU & 3-band EQ
Bartolini® MK1 pickups and EQ featured on SR500/ SR700.



The SR700's gorgeous Maple/Mahogany multilamination can be enjoyed by many players without paying boutique prices.



Jatoba/Bubinga New Slim Neck
Coupling Jatoba with Bubinga has made the neck strong and stable despite its thinness.



SR300 CA

- 5pc SR4 Maple /Rosewood neck
- Agathis body
- Medium frets
- B100 bridge (19mm string spacing)
- EXF-4F neck pu
- EXF-4R bridge pu
- Style Sweeper 3-band eq
- D'Addario® string
- color : CA, IPT, PW



Style Sweeper 3-band EQ

The Style Sweeper on the new SR300s not only provides a variety in tone, but also practically controls the mid range for finger or slap, according to your playing style.



SR300 IPT

- 5pc SR4 Maple /Rosewood neck
- Agathis body
- Medium frets
- B100 bridge (19mm string spacing)
- EXF-4F neck pu
- EXF-4R bridge pu
- Style Sweeper 3-band eq
- D'Addario® string
- color : CA, IPT, PW



SR300 PW

- 5pc SR4 Maple /Rosewood neck
- Agathis body
- Medium frets
- B100 bridge (19mm string spacing)
- EXF-4F neck pu
- EXF-4R bridge pu
- Style Sweeper 3-band eq
- D'Addario® string
- color : CA, IPT, PW



The SDGR has amazed bass players with how slim and fast a bass neck can be and achieve such fat and sturdy tone. The 2008 SDGR line will astonish them again with even more sophisticated capability in any price range.

GSR



GSR200 PW

- GSR4 neck
- Agathis body
- Medium frets
- B10 bridge (19mm string spacing)
- PSNDP neck pu
- PSNDJ bridge pu
- Phat II eq
- color : BK, JB, PW, TR



GSR200 TR

- GSR4 neck
- Agathis body
- Medium frets
- B10 bridge (19mm string spacing)
- PSNDP neck pu
- PSNDJ bridge pu
- Phat II eq
- color : BK, JB, PW, TR



GSR200 JB

- GSR4 neck
- Agathis body
- Medium frets
- B10 bridge (19mm string spacing)
- PSNDP neck pu
- PSNDJ bridge pu
- Phat II eq
- color : BK, JB, PW, TR



GSR200L BK

- GSR4 neck
- Agathis body
- Medium frets
- B10 bridge (19mm string spacing)
- PSNDP neck pu
- PSNDJ bridge pu
- Phat II eq
- color : BK



GSR180 BS

- GSR4 neck
- Nato body
- Medium frets
- B10 bridge (19mm string spacing)
- Standard J neck pu
- Standard J bridge pu
- color : BK, BS, TR



GSR180 TR

- GSR4 neck
- Nato body
- Medium frets
- B10 bridge (19mm string spacing)
- Standard J neck pu
- Standard J bridge pu
- color : BK, BS, TR



Phat II active bass-boost easily adds extra low-end power to the affordable GSR200 models.

for maximum playability and comfort.



SR705 TK

- 5pc SR5 Jatoba/Bubinga neck
- Figured Maple/Mahogany wing body w/Maple center block
- Medium frets
- Accu-Cast B25 bridge (16.5mm string spacing)
- Bartolini® MK1 neck pu
- Bartolini® MK1 bridge pu
- Bartolini® MK1 3-band eq
- Elbit® string
- color : TK



SR505 BM

- 5pc SR5 Jatoba/Bubinga neck
- Mahogany body
- Medium frets
- Accu-Cast B25 bridge (16.5mm string spacing)
- Bartolini® MK1 neck pu
- Bartolini® MK1 bridge pu
- Bartolini® MK1 3-band eq
- Elbit® string
- color : BM



SR506 BM

- 5pc SR6 Jatoba/Bubinga neck
- Mahogany body
- Medium frets
- B106 bridge (16.5mm string spacing)
- Bartolini® MK1 neck pu
- Bartolini® MK1 bridge pu
- Bartolini® MK1 3-band eq
- Elbit® string
- color : BM



SR305 IPT

- 5pc SR5 Maple/Rosewood neck
- Agathis body
- Medium frets
- B105 bridge (16.5mm string spacing)
- EXF-5F neck pu
- EXF-5R bridge pu
- Style Sweeper 3-band eq
- D'Addario® string
- color : IPT



GSR205 BK

- GSR5 neck
- Agathis body
- Medium frets
- B15 bridge (16.5mm string spacing)
- DXS-1 neck pu
- DXS-2 bridge pu
- Phat II eq
- color : BK



"Three-dimensional" shape enhances the comfort and looks.



Bartolini® MK1 PU & 3-band EQ



Jatoba/Bubinga New Slim Neck
Coupling Jatoba with Bubinga has made the neck strong and stable despite its thinness.



EDB

The original Ergodyne EDB's were molded of man-made materials so their comfortable shapes could be offered at a reasonable price. Now, bass making techniques allows the EDB's player-friendly ergonomic shape to be affordably rendered in ash, for rich, organic tones.

THE BOTTOM LINE

- ★ STRONG, SLENDER TWO-OCTAVE NECK.
- ★ SCOOPED-OUT TOP FOR EFFORTLESS SLAPPING AND POPPING.

EDB550 NTF

- 5pc EDB4 Jaboba/Bubinga neck
- Light Ash body
- Medium frets
- B100 bridge (19mm string spacing)
- Duncan®/Ibanez neck pu
- Duncan®/Ibanez bridge pu
- EQB-II DX 2-band eq
- Elbit® string
- color : BKF, NTF, WNF



SHA



EDB550 BKF

- 5pc EDB4 Jaboba/Bubinga neck
- Light Ash body
- Medium frets
- B100 bridge (19mm string spacing)
- Duncan®/Ibanez neck pu
- Duncan®/Ibanez bridge pu
- EQB-II DX 2-band eq
- Elbit® string
- color : BKF, NTF, WNF

EDB555 WNF

- 5pc EDB5 Jaboba/Bubinga neck
- Light Ash body
- Medium frets
- B105 bridge (18.5mm string spacing)
- Duncan®/Ibanez neck pu
- Duncan®/Ibanez bridge pu
- EQB-II DX 2-band eq
- Elbit® string
- color : WNF



Duncan®/Ibanez pickups on EDB550s.



Scooped-out front for slapping and popping.



EDB550s' 5pc Jaboba/Bubinga neck construction combines exceptional strength and stability with extraordinary playability.

OPED OUTTOP FOR SLAPPING AND POPPING

ATK

THE BOTTOM LINE

- ★ BIG FIVE-BOLT, ALL ACCESS MAPLE NECK AND SUBSTANTIAL, YET COMFORTABLE BODY PROVIDE HUGE TONES AND SUSTAIN.
- ★ UNIQUE TRIPLE COIL PICKUP AND TONE CHARACTER SWITCH OFFER EASY RAPID AND RADICAL CHANGES IN TONE.
- ★ WELL-DESIGNED PICKUP AND ELECTRONICS PLACEMENT FACILITATE EASY SLAPPING AND POPPING.

One of the most versatile basses ever created, the ATK has a big, traditional neck and body, but that's where tradition ends and innovation begins. The ATK's triple coil pickup and remarkable Tone Character switch enables a player to make radical tone shifts with just a simple turn of a knob. Need a bass that can go from vicious, rocking metal to slap-happy funk to every other traditional tone you'll ever need? The ATK is your bass.

ATK300 BK

- 3pc ATK4 neck
- Light Ash body
- Jumbo frets
- Maple fretboard
- ATK4 bridge (19mm string spacing)
- ATK Triple coil pu
- ATK 3-band eq
- Elbit® string
- color : BK, BBL, NT



ATK300 BBL

- 3pc ATK4 neck
- Light Ash body
- Jumbo frets
- Maple fretboard
- ATK4 bridge (19mm string spacing)
- ATK Triple coil pu
- ATK 3-band eq
- Elbit® string
- color : BK, BBL, NT



ATK305 NT

- 3pc ATK5 neck
- Light Ash body
- Jumbo frets
- Maple fretboard
- ATK5 bridge (17mm string spacing)
- ATK Triple coil pu
- ATK 3-band eq
- Elbit® string
- color : NT

SHAKE THE FOUNDATION

ATK Triple Coil Pickup

Active Coil Dummy Coil (for Hum Cancel) Inactive Coil



With the ingenious ATK bridge, you have the option to string through-the-body for increased low end and more sustain, or through-the-bridge for slightly more high end and attack.



ATK's round, comfortable neck.



ATK's innovative triple coil pickup and active 3-band EQ allow you to dial in anything ranging from earthquake lows to skull-splitting highs.

ACTIVE BASS BOOSTS FOR P

SRX

HIGH OUTPUT

SRX

If the SR is the ambassador of the Ibanez bass line, the SRX is the enforcer, the bass that uses a little extra muscle to get the job done. Equally at home bashing through a set of metallic thrash as it is playing funky soul, the SRX's high-output, passive pickups can both move mountains and smooth the rough seas. For 2008, Ibanez introduces the SRX 750/755, a massive bubinga/ash monster that really can drop the heavy low end.

SRX750 NTF

- 5pc SRX4 Maple/Walnut neck-thru
- Bubinga/Ash wing body
- Medium frets
- Accu-Cast B200 bridge (19mm string spacing)
- PFR-ALM4 neck pu
- PFR-ALB4 neck pu
- EQB-II DX 2-band eq
- Elker® string
- color : NTF

SRX590 TGF

- 3pc SRX4 neck
- Flamed Maple top/Basswood body
- Medium frets
- Accu-Cast B200 bridge (19mm string spacing)
- PFR-N4 neck pu
- PFR-B4 bridge pu
- EQB-II DX 2-band eq
- Elker® string
- color : TGF

SRX350 TK

- SRX4 neck
- Ash body
- Medium frets
- B100 bridge (19mm string spacing)
- PFR-N4 neck pu
- PFR-B4 bridge pu
- EQB-II DX 2-band eq
- D'Addario® string
- color : NT, TK

SRX350 NT

- SRX4 neck
- Ash body
- Medium frets
- B100 bridge (19mm string spacing)
- PFR-N4 neck pu
- PFR-B4 bridge pu
- EQB-II DX 2-band eq
- D'Addario® string
- color : NT, TK

SRX755 NTF

- 5pc SRX5 Maple/Walnut neck-thru
- Bubinga/Ash wing body
- Medium frets
- Accu-Cast B205 bridge (18mm string spacing)
- PFR-ALM5 neck pu
- PFR-ALB5 neck pu
- EQB-II DX 2-band eq
- Elker® string
- color : NTF

SRX595 TGF

- 3pc SRX5 neck
- Flamed Maple top/Basswood body
- Medium frets
- Accu-Cast B205 bridge (18mm string spacing)
- PFR-N5 neck pu
- PFR-B5 bridge pu
- EQB-II DX 2-band eq
- Elker® string
- color : TGF

SRX355 NT

- SRX5 neck
- Ash body
- Medium frets
- B105 bridge (16.5mm string spacing)
- PFR-N5 neck pu
- PFR-B5 bridge pu
- EQB-II DX 2-band eq
- D'Addario® string
- color : NT



Neck-Thru construction and lightweight Ash body maximizes playability



PFR-AL PU (w/2-band EQ)
The SRX750 features the PFR-AL Amico magnet pickups.



Black pearlloid binding on SRX590/595.

ACTIVE BASS BOOSTS FOR PERFECT LOW END TONE

THE BOTTOM LINE

- ★ THE ORIGINAL SOUNDGEAR FAST NECK AND COMFORTABLE BODY SHAPE.
- ★ EXTRA POWERFUL PASSIVE FULL RANGE PICKUPS WITH EXPOSED POLE PIECES OFFER EXTREME HIGH OUTPUT.
- ★ 2-BAND EQS FOR PERFECT LOW END TONE.
- ★ 5-STRING MODELS OFFER WIDE STRING PITCH FOR PLAYERS WHO FIND THE STRING SPACING ON MOST 5-STRING BASSES TOO NARROW.

ICB

THE BOTTOM LINE

- ★ MASSIVE MAHOGANY BODY DELIVERS ABSOLUTELY HUGE TONES.
- ★ ACTIVE ELECTRONICS ON THE ICB300EX "ICEMAN EXTREME."

The most recognized radical shape in rock exudes metallic menace and becomes a call to arms by simply taking it out of the case. The ICB basses have attitude to spare and a fat, mahogany tone that says 'the army is at the gate—let's rock.'

ICB200EX MBK

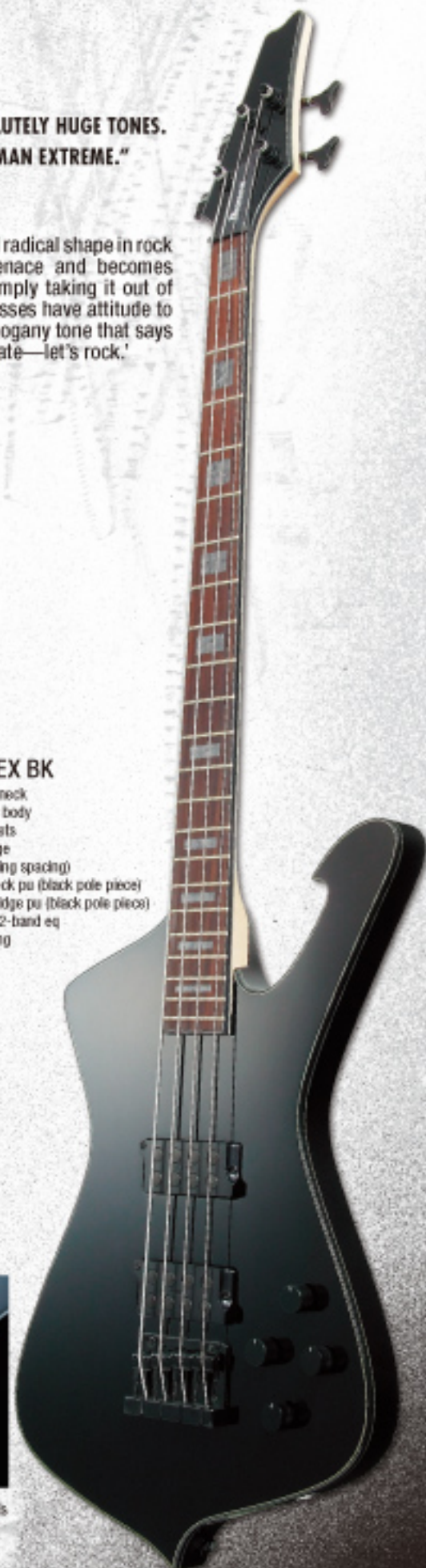
- 3pc ICB4 neck
- Mahogany body
- Medium frets
- B10 bridge (19mm string spacing)
- DCS4N neck pu
- DCS4B bridge pu
- Phat II eq
- Elkir® string
- color : MBK, PW

ICB200EX PW

- 3pc ICB4 neck
- Mahogany body
- Medium frets
- B10 bridge (19mm string spacing)
- DCS4N neck pu
- DCS4B bridge pu
- Phat II eq
- Elkir® string
- color : MBK, PW

ICB300EX BK

- 3pc ICB4 neck
- Mahogany body
- Medium frets
- B100 bridge (19mm string spacing)
- PFR-N4 neck pu (black pole piece)
- PFR-B4 bridge pu (black pole piece)
- EQB-II DX 2-band eq
- Elkir® string
- color : BK



White pinstripe binding on ICB300EX.



The ICB200EX's Phat II EQ active bass boost easily dialed in extra low-end.

SDB

PGB



Sharlee D'Angelo
Arch Enemy

Any bass that takes the stage right after night with Arch Enemy has to take some serious playing without sacrificing tone. Made to Sharlee D'Angelo's custom specs, the new SDB looks as sinister as it sounds.

THE BOTTOM LINE

- ★ **SDB** MONO-RAIL 4 BRIDGE FOR COMPLETE STRING-TO-STRING ISOLATION AND EASIER STRING CHANGES.
- ★ **SDB** FACTORY TUNED TO SHARLEE D'ANGELO'S PREFERENCE OF DROP TUNING (C-F-A#-D#).
- ★ **SDB** SHARLEE'S PREFERRED NECK SPECS FOR ADDED PLAYING COMFORT.

SDB1 BKF

- 5pc SDB4 Maple/Walnut neck-thru
- Mahogany wing body
- Medium frets
- MR-4 bridge (19mm string spacing)
- PFR-N4 neck pu (black pole piece)
- PFR-B4 bridge pu (black pole piece)
- EQB-II DX 2-band eq
- D'Addario® string
- Factory tuning : 1D#, 2A#, 3F, 4C
- color : BKF



The low, murderous tones of Slipknot rumble the ground beneath your feet and threaten to melt your spine. They're coming from Paul Gray's Signature PGB bass and it's a sound that's not to be trifled with. The PGB has an ATK triple coil pickup and 3-band EQ and, using the Tone Character switch, tones can be manipulated into as many shades of chaos as your warped imagination can think of.

Paul Gray
Slipknot

PGB1 TK

- 5pc PGB4 Maple/Walnut neck
- Swamp Ash body
- Jumbo frets
- ATK4 bridge (19mm string spacing)
- ATK triple coil pu
- ATK 3-band eq
- D'Addario® string
- Factory tuning : 1D, 2A, 3E, 4B
- color : TK
- Also available left-handed



THE BOTTOM LINE

- ★ **PGB** BIG FIVE-BOLT, ALL ACCESS MAPLE NECK, MASSIVE BRIDGE AND SUBSTANTIAL, YET COMFORTABLE BODY PROVIDE HUGE TONES AND SUSTAIN.
- ★ **PGB** FACTORY-TUNED TO PAUL GRAY'S PREFERENCE OF LOW B TUNING (B-E-A-D).
- ★ **PGB** UNIQUE TRIPLE COIL PICKUP AND TONE CHARACTER SWITCH OFFER EASY RAPID AND RADICAL CHANGES IN TONE IN ALL-HUMBUCKING POSITIONS.



PRB

MDB

Sometimes the simplest statements are the most revolutionary. Shadows Fall bassist Paul Romanko's Signature PRB1-BWF is a streamlined SRX with one volume control to, naturally, turn up all the way. The rest is left to the individual's free will. Ibanez recommends a strict ideology of rocking hard.

Paul Romanko
Shadows Fall

THE BOTTOM LINE

- ★ MONO-RAIL IV BRIDGE: COMPLETE STRING TO STRING ISOLATION/FIXED BASS SADDLES FOR FIRM BASS TONE.
- ★ SHADOWS FALL STAR 12TH FRET INLAY.
- ★ FACTORY-TUNED TO D-G-C-F.
- ★ GOTOH PRECISION MACHINE HEADS.

- PRB1 BWF**
- 5pcs PRB4 Maple/Walnut neck-thru
 - Swamp Ash wing body
 - Medium frets
 - MR-4 bridge (19mm string spacing)
 - PFR-ALN4 neck pu
 - PFR-ALB4 bridge pu
 - Active 1-volume control
 - D'Addario® string
 - Factory tuning : 1F, 2G, 3G, 4D
 - color : BWF



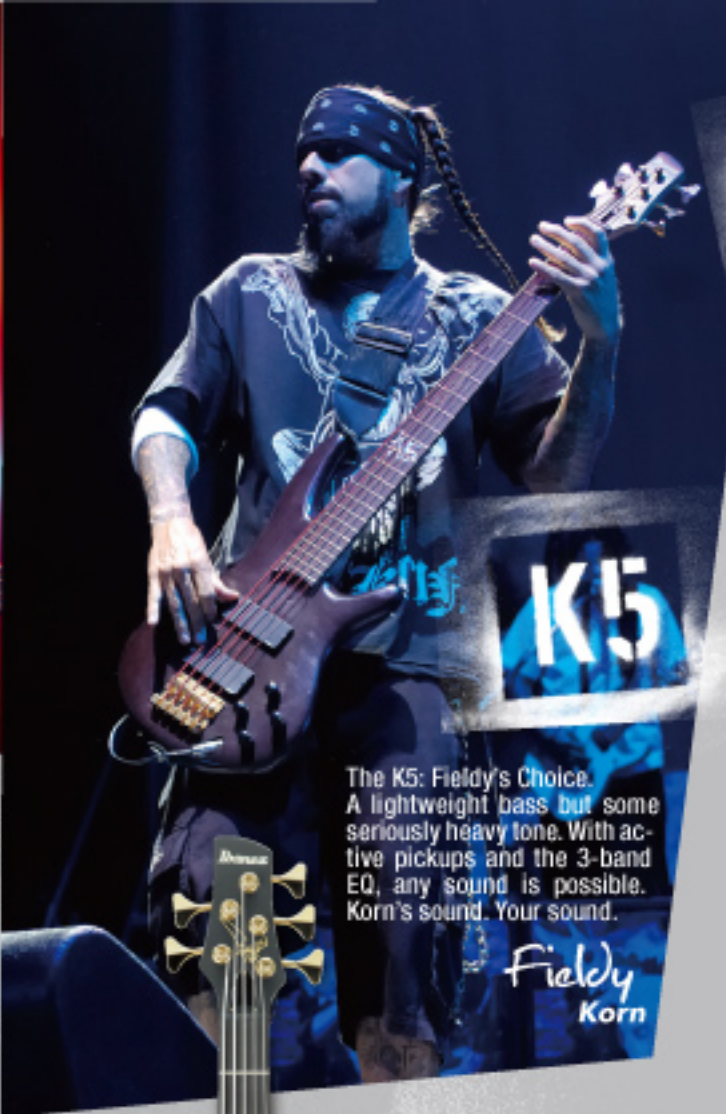
Sometimes straight-forward brute force is the only answer. Killswitch Engage's Mike D'Antonio would agree. His Signature MDB1, modeled after the SRX700, has a simplified control layout of only one volume control with all tone controls set internally at mid-point. Mike's striking Medusa snake graphic basically says "I'm gonna tread all over you."

Mike D'Antonio
Killswitch Engage

THE BOTTOM LINE

- ★ SUPER HIGH OUTPUT PASSIVE FULL-RANGE PICKUPS WITH EXPOSED ALNICO POLE PIECES PROVIDE AWESOME LEVELS OF POWER.
- ★ GOTOH PRECISION MACHINE HEADS.
- ★ FACTORY-TUNED TO DROP-C TUNING (C-G-C-F)
- ★ SPECIAL BEVELED EDGES ON THE UPPER AND LOWER HORNS.

- MDB1 BKF**
- 5pc MDB4 Maple/Walnut neck-thru
 - Swamp Ash wing body
 - Medium frets
 - Accu-Cast B200 bridge (19mm string spacing)
 - PFR-ALN4 neck pu
 - PFR-ALB4 bridge pu
 - Active 1-volume control
 - D'Addario® string
 - Factory tuning : 1F, 2G, 3G, 4C
 - color : BKF



K5

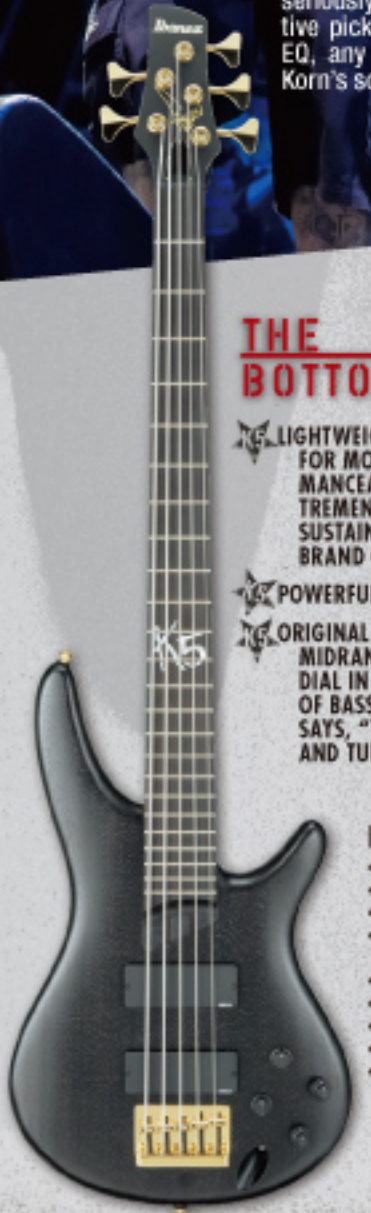
The K5: Fieldy's Choice. A lightweight bass but some seriously heavy tone. With active pickups and the 3-band EQ, any sound is possible. Korn's sound. Your sound.

Fieldy
Korn

THE BOTTOM LINE

- ★ LIGHTWEIGHT HARDWARE ALLOWS FOR MORE ACTIVE PERFORMANCE AND PUMPS OUT THE TREMENDOUS LOW-END AND SUSTAIN NEEDED FOR KORN'S BRAND OF HEAVY ROCK.
- ★ POWERFUL ADX ACTIVE PICKUPS.
- ★ ORIGINAL VARI-MID EQ SWEEPABLE MIDRANGE ALLOWS YOU TO DIAL IN OR DIAL OUT ANY KIND OF BASS SOUND (OR AS FIELDY SAYS, "TAKE THE MIDRANGE AND TURN THAT S%#@S OFF").

- K5 TKF**
- 5pc K5 Maple/Bubinga neck
 - Mahogany body
 - Medium frets
 - Die-Cast EB-7 bridge (16.5mm string spacing)
 - ADX5M neck pu
 - ADX5B bridge pu
 - Vari-Mid III 3-band eq
 - Eladr® string
 - color : TKF



GWB

Gary Willis: Pushing the language of the bass into the realm of the sublime. Gary's Signature GWB fretless is a no-frills, finely-tuned instrument made for the player who desires total dynamic and tonal control and strives for mastery of the fretless low end.

Gary Willis
Tribal Tech

GWB1005 NTF

- 3pc GWB1005 neck
- Swamp Ash body
- Fretless
- Ebonol fretboard
- STD-5 bridge (16.5mm string spacing)
- Bartolini® GWB pu
- Bartolini® MTBT 2-band eq
- D'Addario® EXP165 string
- color : NTF

GWB35 BKF

- 3pc GWB35 neck
- Basswood body
- Fretless
- Ebonol fretboard
- B105 bridge (16.5mm string spacing)
- SFR-GWB custom wound pu
- EQB-GWB 2-band eq
- D'Addario® EXP165 string
- color : BKF



THE BOTTOM LINE

- ★ GARY'S JAPANESE HANDCRAFTED GWB1005 MODEL RAISES THE FRETLESS BAR.
- ★ THE GWB35 OFFERS THE GW ADVANTAGES AT AN AFFORDABLE PRICE.
- ★ ACTIVE/PASSIVE BYPASS SWITCH.
- ★ WILLIS-DESIGNED FINGERREST/RAMP REFINES RIGHT-HAND TECHNIQUE.
- ★ SURE GRIP TUNING MACHINES OFFER FAST RESTRINGING AND PRECISE TUNING.
- ★ GWB1005 INCLUDES DELUXE PRESTIGE CASE.

JTK

Sometimes, picking up an older weapon brings all the urgency of the battles of the past rushing back. The JTKB200 brings to life a time when the clubs weren't quite as tame and being on the road was a crash course in survival. The Jet King bass has classic tones and looks, but is ready for the harsh realities of the modern world..

JTKB200 BK

- 3pc JTKB neck
- Mahogany body
- Medium frets
- JTB10 bridge (19mm string spacing)
- ACHB-2 neck pu
- ACHB-2 bridge pu
- Elbr® string
- color : BK, BS

JTKB200 BS

- 3pc JTKB neck
- Mahogany body
- Medium frets
- JTB10 bridge (19mm string spacing)
- ACHB-2 neck pu
- ACHB-2 bridge pu
- Elbr® string
- color : BK, BS

THE BOTTOM LINE

- ★ 70'S VINTAGE-FEEL PASSIVE BASS.
- ★ CHROME-COVERED PASSIVE SOAPBAR PICKUPS.
- ★ DURABLE SADDLE ANCHORS FOR HARD PICKING PLAYERS.



ACHB PU & Controls
The Jet King Bass is fitted with warm sounding ACHB pickups and classic knobs.

AFB/AGB

It's the Wild West out there. Time to saddle up. The Artcore bass lineup features two models designed for warmer, rounder, more "roots rock" tones. The AFB200 offers the rich complex tones of a true full-acoustic body while the semi-acoustic construction of the AGB200 provides increased sustain and feedback resistance.

AGB200 TBR

- 3pc Artcore Bass Mahogany /Maple neck
- Maple top/back/sides
- Medium frets
- Gibraltar II bass bridge (19mm string spacing)
- Oak Chango III bass tailpiece
- ACHB-2 neck pu
- ACHB-2 bridge pu
- D'Addario® string
- depth: 43mm at tail
- color : TBR

AFB200 BS

- 3pc Artcore Bass Mahogany /Maple neck
- Maple top/back/sides
- Medium frets
- Wooden bridge
- FBT40 tailpiece
- ACHB-2 neck pu
- ACHB-2 bridge pu
- D'Addario® string
- depth: 70mm at tail
- color : BS

THE BOTTOM LINE

- ★ TWO PICKUP CONFIGURATION FOR GREATER TONAL RANGE
- ★ COVERED PICKUPS PROVIDE WARM TONES THAT COMPLEMENT THE HOLLOW AND SEMI-HOLLOW BODIES AND 30 INCH SCALE NECK.

JTK

Sometimes, picking up an older weapon brings all the urgency of the battles of the past rushing back. The JTKB200 brings to life a time when the clubs weren't quite as tame and being on the road was a crash course in survival. The Jet King bass has classic tones and looks, but is ready for the harsh realities of the modern world..

JTKB200 BK

- 3pc JTKB neck
- Mahogany body
- Medium frets
- JTB10 bridge (19mm string spacing)
- ACHB-2 neck pu
- ACHB-2 bridge pu
- Elbit[®] string
- color : BK, BS

JTKB200 BS

- 3pc JTKB neck
- Mahogany body
- Medium frets
- JTB10 bridge (19mm string spacing)
- ACHB-2 neck pu
- ACHB-2 bridge pu
- Elbit[®] string
- color : BK, BS

THE BOTTOM LINE

- ★ 70'S VINTAGE-FEEL PASSIVE BASS.
- ★ CHROME-COVERED PASSIVE SOAPBAR PICKUPS.
- ★ DURABLE SADDLE ANCHORS FOR HARD PICKING PLAYERS.



ACHB PU & Controls
The Jet King Bass is fitted with warm sounding ACHB pickups and classic knobs.

AFB/AGB

It's the Wild West out there. Time to saddle up. The Artcore bass lineup features two models designed for warmer, rounder, more "roots rock" tones. The AFB200 offers the rich complex tones of a true full-acoustic body while the semi-acoustic construction of the AGB200 provides increased sustain and feedback resistance.

AGB200 TBR

- 3pc Artcore Bass Mahogany /Maple neck
- Maple top/back/sides
- Medium frets
- Gibraltar II bass bridge (19mm string spacing)
- Oak Chango III bass tailpiece
- ACHB-2 neck pu
- ACHB-2 bridge pu
- D'Addario[®] string
- depth: 43mm at tail
- color : TBR

AFB200 BS

- 3pc Artcore Bass Mahogany /Maple neck
- Maple top/back/sides
- Medium frets
- Wooden bridge
- FBT40 tailpiece
- ACHB-2 neck pu
- ACHB-2 bridge pu
- D'Addario[®] string
- depth: 70mm at tail
- color : BS

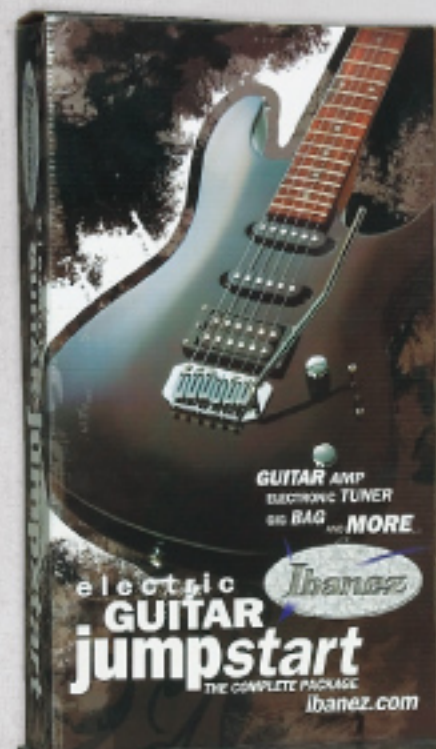
THE BOTTOM LINE

- ★ TWO PICKUP CONFIGURATION FOR GREATER TONAL RANGE
- ★ COVERED PICKUPS PROVIDE WARM TONES THAT COMPLEMENT THE HOLLOW AND SEMI-HOLLOW BODIES AND 30 INCH SCALE NECK.



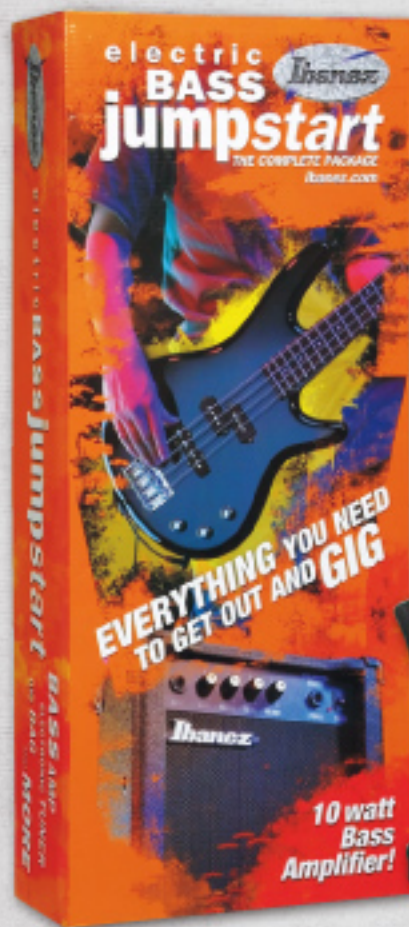
GRX70DXJ Jumpstart
Features GRX electric guitar and Jumpstart Guitar Package Accessories.

- Amplifier**
- 10 watt dedicated guitar amp
- Package Accessories**
- Electronic Tuner
 - Gig Bag
 - Guitar Strap
 - Picks
 - Accessories Pouch



GSA6J Jumpstart
Features GSA electric guitar and Jumpstart Guitar Package Accessories.

- Amplifier**
- 15 watt dedicated guitar amp w/verb
- Package Accessories**
- Electronic Tuner
 - Gig Bag
 - Guitar Strap
 - Picks
 - Accessories Pouch



GSR190J Jumpstart
Features GSR electric bass and Jumpstart Bass Package Accessories.

- Amplifier**
- 10 watt dedicated bass amp
- Package Accessories**
- Electronic Tuner
 - Gig Bag
 - Bass Guitar Strap
 - Picks
 - Accessories Pouch



PACKAGES

When we say "Everything you need to get out and gig," we mean everything—amp, axe, accessories. All it takes is you and your desire to make your dreams real—to get out of the audiences and up on stage where you belong. It's in the cards. Go for it.

IBANEZ ARTISTS



AMPS, EFFECTS & ACCESSORIES

MIMX

UNIVERSAL Guitar Amplifiers

Traditional companies provide versatility and warm vintage tones with their modeling amps, but only Ibanez brings you the same versatility plus the heavy, searing modern tones required by today's players. The new MIMX amps offer a wider variety of distortion and overdrive than any other modeling amp currently available, and there's still plenty of classic and clean tones to get you through any gig.



Amp Selection Built-in Rhythm machine



Built-in Effect

IFC2 Pedal Effects

The PEDAL FX section is ONLY accessible using the optional Ibanez IFC2 Foot Controller (The IFC2 is not included and is sold separately)



MIMX150H

150 Watt Fully Digital Modeling Head

- 150 watt @ 4 ohms
- Fully digital programmable preamp with 11 amp models
- 10 memory locations
- 50 rhythm patterns
- 13 digital effects
- Accessory compartment
- Optional IFC2 foot controller
- W636xD252xH259
- Weight : 13.5kg

- 11 amp models with the widest amp/tonal type variation available. Features ten of the classic British, American and boutique amp models plus a new and original Ibanez high-gain "Psycho" model.
- 10 programmable patches! Any combination of settings can be auditioned and adjusted in real time and then saved to any one of the 10 memory locations. This includes amp model, equalization setting and digital effects and their particular parameters.
- 50 rhythm patterns. Wide range of rhythms for any kinds of practice, recording or single gig : metal, Latin, hip-pop, ballad, shuffle, hard rock and much more.

- 13 digital effects (up to three effects simultaneously); including five Expression Pedal-type Effects Accessible via the OPTIONAL Pedal Controller : VOLUME, RING MODULATOR, AUTO RESONANCE, WAH-WAH and PITCH SHIFT.
- You can choose one of the four Modulation Type Effects : CHORUS, FLANGER, VIBRATO or STEP.
- And one of Delay/Reverb Type Effects : DELAY, ECHO, HALL or ROOM REVERB.
- Plus a built-in fully chromatic tuner!

MIMX65

65 Watt Fully Digital Modeling Combe

- 65 watt guitar amp
- 12" Speaker
- Fully digital programmable preamp with 11 amp models
- 10 memory locations
- 50 rhythm patterns
- 13 digital effects
- 1/4" CD/MP3 input jack
- 1/4" headphones/record out jack
- Closed-back cabinet design
- Optional IFC2 foot controller
- W491xD254xH51
- Weight : 16.2kg



X Mode/Channel
The X mode/channel emphasizes lighter low end and a unique tonality in the midrange, which increases sustain and harmonics.



Gain control on Normal Channel
The TBX features a Gain control on the Normal Channel to offer wider tonal variation ranging from pure clean tones to crunchy overdrive.



Parametric MID EQ control
Mid range is a very important aspect in determining the character of an amplifier's sound. The TBX active Parametric Mid control allows you to shape a wide variety of distortion tones and amp sounds. This control also works for the Normal channel on the TBX15R and TBX30R.



Tone Blaster

Guitar Amplifiers

TBX150H

- output power 150W@4Ω
- speaker unit 8" Ibanez IS004
- controls Normal Channel : Gain, Volume, Channel Switch
X Channel : Gain, Volume
EQ : Bass, Middle Frequency, Middle Level, Treble, Reverb Level
Input, CD/MP3 In, Headphones
Closed Back Cabinet
636 (W) x 259 (H) x 252 (D) mm
14.1kg
- I/O's
- cabinet
- size
- weight

IS412CA / IS412CS

- speaker unit 4 x 12" Ibanez IS1216G
- power handling 320W rms / 640W max
- I/O's 2 x Input (4Ω & 16Ω)
- cabinet IS412CA : Traditional Angled
IS412CS : Straight Front Angled
707 (W) x 755 (H) x 334 (D) mm (with casters)
34kg (with casters)
- size
- weight



TB150H Accessory Storage
Allows convenient storage of footswitches, cables or accessories.



HUE Control
Adjusts overall tonal character. (TBX150R/150R)



TBX15R

- output power 15W@4Ω
- speaker unit 8" Ibanez IS004
- controls Normal Channel : Gain, Volume, Channel Switch
X Channel : Gain, Volume
EQ : Bass, Middle Frequency, Middle Level, Treble, Reverb Level
Input, CD/MP3 In, Headphones
Closed Back Cabinet
367 (W) x 351 (H) x 201 (D) mm
7.3kg
- I/O's
- cabinet
- size
- weight



TBX30R

- output power 30W@4Ω
- speaker unit 10" Ibanez IS1008G
- controls Normal Channel : Gain, Volume, Channel Switch
X Channel : Gain, Volume
EQ : Bass, Middle Frequency, Middle Level, Treble, Reverb Level
Input, CD/MP3 In, Footswitch, Headphones
Open Back Cabinet
440 (W) x 413 (H) x 222 (D) mm
8.3kg
- I/O's
- cabinet
- size
- weight



TBX65R

- output power 65W@4Ω
- speaker unit 12" Ibanez IS1204G
- controls Normal Channel : Overdrive Switch, Gain, Bass, Middle, Treble, Volume, Channel Switch
Hot Channel : X Mode Switch, Gain, Bass, Middle Frequency, Middle Level, Treble, Volume, Reverb Level
Input, CD/MP3 In, Footswitch, Headphones
Closed Back Cabinet
491 (W) x 451 (H) x 254 (D) mm
17.7kg
- I/O's
- cabinet
- size
- weight

The new generation Tone Blaster X series amps were designed and created to answer the needs of today's guitarist. The parametric mid EQ allows you to dial in any tone you're looking for in an instant. The exclusive X mode allows you to get monstrously heavy and lets you cut through the din of the loudest rhythm section. The gain control in the normal channel can be dialed down to give you anything from a clean jazz tone to a crunchy, slightly overdriven rock'n roll tone. Plug in and express yourself with TBX.



CD / MP3 Player In
Featuring a moving piano that allows you to play along with any music source, including CD & MP3 players. (TBX15R/30R/65R)



IS Speaker driver
Extremely efficient—Ibanez IS speaker drivers are voiced for light and focused low-end for today's modern music styles.



TBX150R

- output power 150W@4Ω
- speaker unit 2 x 12" Ibanez IS1208G
- controls Normal Channel : Overdrive Switch, Gain, Bass, Middle, Treble, Volume, Reverb Level
Hot Channel : X Mode Switch, Gain, Bass, Middle Frequency, Middle Level, Treble, Volume, Reverb Level
Channel Switch
Hue
Input, Send, Return, Speaker Output, Footswitch 1 & 2
Closed Back Cabinet
663 (W) x 500 (H) x 274 (D) mm
24.5kg
- I/O's
- cabinet
- size
- weight

A 11-Tube Guitar Amplifier

Thermion

The 120-watt Thermion features only the finest top-shelf, military-grade components...all in the service of a design that considers every aspect of modern playing from tone to transport. But the most important spec is this: Thermion is all-tube. There is absolutely no solid-state circuitry in the signal path. So you've got the tones, power and control you need to conquer every album track, every stage, every city, and ultimately, the entire universe (admittedly, that may take a little time).

TN120 THERMION™ Ibanez all-tube amplifier

- 120W 5%THD @4, 8, or 16 ohms
- All tube signal line circuitry (NO SOLID-STATE!) with mechanical relays
- 4 x 6L6GC/MSTR MATCHED Ruby Tubes™** output tubes (user switchable to 6550s)
- 5 x 12AX7A-SELECTED Ruby Tubes™** preamp tubes
- HVLD Input impedance switch
- Two independent channels: Vintage Channel & Hot Channel
- Tube circuit Effects Loop w/Send and Return Level Control on the front panel and Blend/Serial switch on the rear panel.
- Illuminated front panel and illuminated Ibanez logo
- Dampening switch enables different distortion characteristics out of Hot channel
- Rotary 3-position Bright switch in Vintage channel
- Traditional passive EQ in both channels
- 3-button footswitch for Channel switching, Dampening and Effects Loop on/off.
- Maintenance friendly, professional-grade design includes bias adjustment interface for output tube replacement on top of chassis, IEC 60065 compliance, high efficiency toroidal core transformer with automatically resetting thermal fuse, durable 3/4" plywood cabinet, heavy-duty toggle switches, potentiometers with dust-covers, and more.
- Size : 740 (W) x 290 (H) x 260 (D)
- Weight: 24kg

TN412A THERMION™ traditional angled guitar speaker cabinet

- 4 x Celestion® Vintage 30™ speaker drivers
- 5/8" birch plywood provides durability and augments resonance
- Input jacks w/stereo/mono switch
- Separate left and right chambers eliminate acoustic interference
- 2-1/2" large heavy-duty pop-in casters
- Durable 1.5mm black nickel-plated carbon steel corners and additional front angle corners (TN412A)
- Ultra-durable cane net grill
- Size : 778 (W) x 750 (H) x 366 (D)
- Weight : 50kg

* "Ruby Tubes" is a trademark of the Magic Parts Co.
** "Celestion" and "Vintage 30" are trademarks of the Celestion Corp.

TN120

TN412A

TN412S



SW100

SW115S



Limiters

All Sound Wave series bass amplifiers are equipped with internal limiter circuitry. Extremely natural limiting minimizes distortion and keeps the low-end smooth and punchy.

SW35 Sound Wave

- output power 35W@4Ω
- speaker unit 10" Ibanez "POWER JAM" Coaxial speaker (with tweeter)
- controls Gain Switch, Gain, Bass, Middle, Treble, Presence, Volume
- i/o's Input, CD Input, Line Out, Speaker Out, Effects Loop, Headphones
- cabinet Closed Back Tilt Back cabinet
- size 415 (W) x 445 (H) x 335 (D) mm
- weight 15.6 kg

SW65 Sound Wave

- output power 65W@4Ω
- speaker unit 12" Ibanez "POWER JAM" speaker with piezo tweeter
- controls Gain Switch, Gain, Bass, Middle, Treble, Presence, Volume
- i/o's Input, CD Input, Line Out, Speaker Out, Effects Loop, Headphones
- cabinet Closed Tilt Back cabinet
- size 460 (W) x 525 (H) x 425 (D) mm
- weight 20.2 kg

SW20 Sound Wave

- output power 20W@4Ω
- speaker unit 8" Ibanez "POWER JAM" Coaxial speaker (with tweeter)
- controls Gain Switch, Volume, Bass, Middle, Treble, Presence
- i/o's Input, CD Input, Headphones
- cabinet Closed Back cabinet
- size 328 (W) x 365 (H) x 277 (D) mm
- weight 8.9 kg

SW35



SW20

SW65

Bass Amplifiers Sound Wave

Whether you play funk, metal, or anything in between, Ibanez bass amps provide the right power, tone control and speaker combination for the job, onstage and off.

SW100 Sound Wave

- output power 100W@8Ω/145W@4Ω
- speaker unit 15" Ibanez "POWER JAM" speaker with piezo tweeter
- controls Direct Out - GND LIT Switch, Post EQ Switch, Sensitivity Switch, Gain, Bass, Middle-Select, Treble, Presence, FX Mix, Volume, Tweeter Switch
- i/o's Input, CD Input, Direct Out, Line Out, Speaker Out, Effects Loop, Tuner Out, Headphones
- cabinet Closed Tilt Back cabinet
- size 540 (W) x 590 (H) x 490 (D) mm
- weight 32.5 kg

SW115S Sound Wave

- speaker 15" Ibanez "POWER JAM" speaker with piezo tweeter
- power handling 300Wrms/600Wmax
- controls Tweeter Switch
- i/o's Input
- impedance 8Ω
- size 540 (W) x 530 (H) x 490 (D) mm
- weight 25kg

Acoustic Guitar Amplifiers

TROUBADOUR

There's nothing like the pure, natural sound of an unplugged acoustic... until you want to reach a wider audience. Ibanez acoustic amplifiers feature hi-fidelity components, versatile EQ systems and our extended range Power Jam speakers so your growing audience will still get your message loud and clear.



TA35 Troubadour

- output power 5 w @ 4Ω
- speaker unit 10" Ibanez "POWER JAM" Coaxial Speaker (with tweeter)
- controls Microphone - Volume
Guitar - Volume
Chorus - ON & OFF Switch/Speed/Depth
Equalization - Bass/Middle Frequency/Middle Level/Treble/Reverb - Level/Master Volume
- i/o's CD Input/RCA/Guitar Input/Microphone Input(XLR)
Line Out/Foot Switch
- cabinet Sealed-Back/Kick Back Cabinet
- size 434(W) x 423(H) x 365(D) (mm)
- weight 14.2kg

TA20 Troubadour

- output power 20 w @ 4Ω
- speaker unit 8" Ibanez "POWER JAM" Coaxial Speaker (with tweeter)
- controls Guitar - Volume
Chorus - ON & OFF Switch/Speed/Depth
Equalization - Bass/Middle Frequency/Middle Level/Treble/Reverb - Level
- i/o's Guitar Input/Line Out
- cabinet Sealed Back Cabinet
- size 320(W) x 361(H) x 272(D) (mm)
- weight 8.8 kg

IBZ10A Acoustic Guitar Amp

- output power 10w @ 8Ω
- speaker unit 6.5" Speaker
- controls Chorus - ON & OFF Switch/Depth/
Bass/Middle/Treble/Volume
Input/Headphones
- i/o's Open-Back Cabinet
- cabinet 275 (W) x 310 (H) x 195 (D) mm
- size 4.8 kg
- weight

TA35 Front Panel

The TA35 features onboard chorus with depth and speed controls, reverb and microphone and CD inputs. The pre-amp section of the TA35 has been specially voiced for the acoustic guitar, and the TA35 can function as a powered mixer for solo gigs.



Amp lifiers



VBG-"ValBee"

Valve sound in a compact package.

- output power 5W@4Ω Tube Guitar Amp
- tubes 1 x 6L6GC (Power), 1 x 12AX7 (Pre)
- speaker unit 6.5" Speaker
- controls Gain, Bass, Middle, Treble, Presence, Volume, Boost SW
- i/o's Guitar Input, Valve Powered Phones/ Rec Out, Send, Return
- cabinet Closed-Back Cabinet
- size 300(W) x 280(H) x 240(D) (mm)
- weight 7.8 kg



IBZ10G Guitar Amp

- output power 10W@8Ω
- speaker unit 6.5" speaker
- controls Overdrive On/Off Switch, Gain
Bass, Middle, Treble, Volume
- i/o's Guitar Input, Headphone, CD Input
- cabinet Closed-Back cabinet
- size 274(W) x 313(H) x 205(D) mm
- weight 5.3 kg



IBZ10B Bass Amp

- output power 10W@8Ω
- speaker unit 6.5" speaker
- controls Bass, Middle, Treble, Presence, Volume
- i/o's Bass Input, Headphone
- cabinet Closed-Back cabinet for "phat" bass tone
- size 280 (W) x 310 (H) x 205 (D) mm
- weight 5.1 kg



GA1G

- 4W Guitar Amp
- AC Adapter included



GA1B

- 4W Bass Amp
- AC Adapter included

Footswitches



IFS4X

Latching 4-button footswitch with metal housing for use with the TBX150H/TBX150R.



IFS2X

Latching footswitch with metal housing for use with the TBX and TA35.

JEMINI & TUBE KING

Jemini
distortion



JEMINI
-Steve Vai Signature Distortion Pedal-

After developing so many guitars with Steve Vai, the long wait for this pedal has all been worth it. All aspects of the JEMINI are expressions of him, as are his axes. Within the multi-colored die-cast casing, two identical distortions are built in for a variety of sonic occasions; and the unique large LEDs tell you they are in operation not only on a dark stage, but even under the daylight. Not just a hair distortion pedal, the Ibanez JEMINI powers you and your axe up as it does Steve and his guitars.



TUBE KING
DISTORTION

TK999HT

When it comes to genuine tube distortion in a stomp box, the Tube King TK999HT rules. Featuring an actual 12AX7 tube, 3 band EQ & Drive controls along with Presence switch, the Tube King generates a wide variety of tones, including thick, singing distortion and outrageous heavy metal distortion. Also with its unique VOID function, it eliminates the noise and helps to create sharp rhythmic expression with heavy distortion. Housed in a unique shaped rigid die-cast case with visible tube through the transparent window, the Tube King will reign forever.



TS808 & 9series

When it comes to compact effects, nine is the magic number. There are sound reasons why, twenty-five years after they were first made, you still see these effects in players' rigs. If you missed out on getting one of these classics the first time around, it's time.



TS808 TUBE SCREAMER

The TS808 reissue, described as "the Holy Grail of Tube-screamers", features the same famous standout square footswitch of the original and the even more famous warm tones of the JRC4558 chip used in most of the original TS808's. Ignore any over-the-counter look-alikes. If your tone is suffering from a lack of real warmth, the TS808 is the real, non-generic prescription.



TS9 TUBE SCREAMER

The warmth of tube amps has been the goal for most of the over-drive pedals that exist. However, the Tube Screamer has been the choice 2nd to none by people searching for the best, because it lets the guitar sing so well in its original voice. The tone can be heard in playing by countless musicians over the years and still keeps fascinating new generations.



TS9DX TURBO TUBE SCREAMER

"The Tube Screamer", TS9 had evolved on the same platform of TS9. The TS9DX offers three different settings for increased low end crunch: +, Hot, and Turbo, all of which maintain the original TS9 tonal integrity.



FL9 FLANGER

After more than a decade of digital, analog pedals made a quiet come back, because guitar players don't always equate fidelity with quality. Having said that, the Ibanez FL9 has eliminated the unnecessary click noise and provides a wide range of flanging effects with the 4 practical knobs, including the delay time.



CS9 STEREO CHORUS

Advances in technology sometimes declare gear obsolete in disregard of existing demand. The Ibanez CS9 features the sought out BBD IC to replicate the original chorus effect with the two simple controls. Stereo outputs enable creation of an indefinite sound space by using two amps.



AD9 ANALOG DELAY

Analog delay was the hot topic in the music industry when it was first introduced. It changed the whole effort to obtain echo sound into just switching and turning knobs. And nowadays everyone has access to the effect, with much more exact repeat sounds due to digital technology. However, the warmth of analog delay has many adherents that will never be satisfied with its digital counterpart.

DC3&DC5

Splitter cords for powering 3 or 5 pedals from one adapter.



AC109

Standard 9-volt 200mA regulated adapter for Ibanez compact effects.



AC509

Standard 9-volt 500mA regulated adapter for Ibanez compact effects.



TONE-LOK

EFFECTS PEDALS

On the inside, Tone-Lok pedals feature hi-fidelity components carefully tweaked with the constant input from a new generation of Ibanez players. And all this great stuff comes encased in cool looking, road tough metal boxes at prices the working player can afford.

On the outside, Tone-Lok effects are equipped with our exclusive "set and forget" Push-Lok rotary pots. Push the knobs down and your tone settings lock securely inside the case. No more lost settings or knobs broken.



WD7 Weeping Demon

The most variable and controllable guitar wobble you can get. The Weeping Demon's shrike, cry, wails and seductive other ranges will have your audience screaming for more. The Weeping Demon features spring and normal footboard action, selectable wah range, five tuning controls and more.



TC7 TRI-MODE CHORUS

Are you bored with normal chorus pedals? If so, the new Ibanez TC7 will bring the thrill back. The TC7 can create three types of chorus with the combination of two in-divided chorus circuits. It truly expands your guitar's expressiveness.



SM7 Smash Box

The Smashbox is the most aggressive weapon in the Tone-Lok distortion arsenal. Armed with obscene amounts of gain, tight low end, and searing highs, the Smashbox is THE heavy rock sound for the contemporary guitarist.

SH7 7th Heaven

Designed specifically for 7-string guitars with the input from some of basses' hottest 7-string players, the SH7 Seventh Heaven distortion pedal accentuates the low-end girth of the 7-string while reducing unwanted string noise. A special mode switch allows you to choose between two different distortion voicings while Lo, Hi, Drive, and Level knobs give you total tone control. An analog master effect for replicating the best 7-string sounds at others or creating your own individual tone.

DS7 Distortion

The most versatile bass distortion pedal ever, capable of producing a wide range of smooth, dynamic overdrive tones. From a subtle tonal nudge to wall-popping rock'n'roll crunch, the DS7 delivers tons of sustain and jabs of gain.

TS7 Tubescreamer

The Tubescreamer isn't just a stompbox, it's an institution. Our latest generation Tubescreamer, the TS7, is no exception. With the Tubescreamer's classic subtle-but-smooth overdrive, the TS7 spreads the expressiveness of your guitar while maintaining its tonal integrity. Tone adjustments are provided by the classic three knob configuration with its added "Tilt" switch for an extra gain boost.

FZ7 Fuzz

Far out! A complete 60's flashback with some of the drivebacks, the FZ7 is the ultimate in psychedelic fuzz. With the FZ7's tone, drive, and level controls, it's never been easier to get the right retro tones. You can even engage the DAMAGE switch for that sexy, broken speaker sound. "Yeah, baby, yeah!" Dial it, turn it, drop down or whatever turns you on.

DE7 Delay/Echo

Add new dimensions to your sound with the DE7 Delay/Echo pedal. Get the best of both worlds: high tech digital sounds compatible to expensive rack units at warm vintage tape echo sounds—all with a simple flick of the switch. TIME, REPEAT and LEVEL controls help you dial in just the right amount of delay, while stereo outputs can be used for a more spacious sound. With a range of 30ms to 2.6 seconds, the DE7 is the only solid solution for every playing situation.



PH7 Phaser

Designed to enable the effect of a rotating speaker, the PH7 has a switchable phase circuit capable of either four or eight stages of smooth phasing. With these two very different tonal modes, you can go from a subtle shimmer to full-on "70's" Let's Get Funky" phasing.

PM7 Phase Modulator

If you've gone through one phase after another, maybe it's time for the real phase. The PM7 Phase Modulator offers three types of waveforms to give you everything from classic phaser to DJ effects to try the gain sounds. Since good things come in threes, the PM7 also has three phase stages: vintage, deep and dry, and deep and pronounced. With some minor tweaking, the PM7 goes from traditional to 21st century and beyond.

AW7 Autowah

There are autowahs. And there are autowahs. But the Tone-Lok AW7 isn't just an autowah. It's got standard wah when both the highs and lows are cut and it's got a wah setting where only the highs are cut. And it's got distortion. Band Pass Filter provides the sound of a standard wah pedal (at one setting) to favorite wah pedal technique of Joe Satriani. You can even change the chain order of the effects to get different tones, either distortion to wah or wah to distortion.

LF7 Lo Fi

The first dedicated filter pedal for the guitar, the LF7's vintage controlled analog high and low pass filters allow you to emulate transistor radio and response type sounds. Best used at the end of a signal chain in combination with other pedals, this locking tone bomb creates wide soundscapes of fat low tones that previously required a massive rack of analog electronics. The Lo Fi also performs equally well with rock, drum machines, or in any "rockdown" context.

PD7 Phat-Med Bass Overdrive

Why let guitarists rule the stage? Loaded with growing low-end distortion, the PD7 levels the playing field for the rock bassist. The PD7 is armed with three pre-amp style sound types and an attack control switch, which accents the amount of harmonic content in your sound. With DRIVE, LO, HI, and LEVEL knobs, dialing in a fatter bass sound has never been easier.

SB7 Synthesizer Bass

If you're looking for new tones, or you're still considering with resentment against synth bass keyboard players, the SB7 is the ticket. You've got real, live feel—in other words, no copying tracking errors and delays. You can even play chords.

Tuners



LU20 PEDAL TUNER

This tuner features a durable diecast housing and LED display with a three-color indicator for maximum visibility from the floor. It also features a true bypass on/off switch for the truest tone and a muting function.



LU10

Wide-size easy-to-read chromatic LED tuner.



GU40BL

Guitar and bass tuner available in blue, red or silver. Manual and automatic tuning. Output jack for effect board use. Internal speaker.

GU40RD

GU40SL

CU40

Chromatic Tuner

MU40

Chromatic tuner & metronome



PU10 -Clip Tuner-

The new Ibanez PU10 tuner is designed to tune electric and acoustic guitars, basses, violins, banjos, mandolins, and more without interference from ambient room noise. It does it all without the use of wires, microphones, or pickups. Tuning in noisy environments is a snap because the unique, flexible clamp actually feels the instrument's vibration instead of relying on sound. The 4 hinges on the PU10 allow a perfect view of the tuner's LCD display from nearly any angle.



RU10 -Jam Tuner-

There is no doubt that tuning is important. However it is just preparation, when your goal is to be playing guitar and having fun. With the Ibanez RU10, Jam Tuner, you can do both without firing up your amp. Besides functioning as a chromatic tuner, the RU10 combines a metronome and the Rhythm Play function that features preset rhythm patterns to play along with. The gain control enables you to produce an amazing, real deal distortion sound out of the built-in speaker, letting you jam right away.

Cables

Series 96

96 micro-standards of silver plated copper core wires offer low impedance and maximum signal transfer.

- Core: 0.1 x 96 (Silver Plated)
- Shield (Braid): 0.1 x 8 x 12 (DFC 99.99%)
- Sure Grip Rubber on Plug
- Velcro Strap with Ibanez Logo equipped
- Outer Jacket: PVC Woven



Series DS

double-shielded construction offers pro-quality and durability at standard cable prices.

- Core: OFC (99.99%)
- Shield: OFC (99.99%) Braided and Aluminum Sheet
- Velcro Strap with Ibanez Logo equipped
- Outer Jacket: PVC Woven (Black, Red & Blue colors are available)

Woven Cables



Black

Blue

Red

Series STC



Microphone Cables

- Core: OFC (99.99%)
- Shield (Braid): 0.12 x 64
- Velcro Strap with Ibanez Logo equipped
- Plug Type: 1/4", XLR
- Length: 3.05m (10ft), 6.10m (20ft), 15.24m (50ft)

Speaker Cables

- Core: 0.1 x 200 (Silver Plated) x 2
- Shield: Braided
- Velcro Strap with Ibanez Logo equipped
- Plug Type: 1/4" / Neutrik® Speaker
- Length: 1.83m (6ft), 3.05m (10ft), 7.63m (25ft), 15.24m (50ft)



GUITAR INSTRUMENT CABLE — SERIES 96

Length	Plug Type	Model No.	
6ft/1.83m	Straight-Straight	NCS6	
	Straight-Right Angle	NCS6L	
10ft/3.05m	Straight-Straight	NCS10B	Woven (Black)
	Straight-Right Angle	NCS10L	
15ft/4.58m	Straight-Straight	NCS15	
	Straight-Right Angle	NCS15L	
20ft/6.10m	Straight-Straight	NCS20B	Woven (Black)
	Straight-Right Angle	NCS20L	
0.5ft/15cm	Right Angle-Right Angle	NCS05LL	Patch Cable
0.8ft/25cm	Right Angle-Right Angle	NCS08LL	Patch Cable

GUITAR INSTRUMENT CABLE — SERIES DS

Length	Plug Type	Model No.	
6ft/1.83m	Straight-Straight	DSC6	
	Straight-Right Angle	DSC6L	
10ft/3.05m	Straight-Straight	DSC10B	Woven (Red)
	Straight-Straight	DSC10BL	Woven (Blue)
	Straight-Straight	DSC10BK	Woven (Black)
	Straight-Straight	DSC10	
15ft/4.58m	Straight-Right Angle	DSC15L	
	Right Angle-Right Angle	DSC15LL	
20ft/6.10m	Straight-Straight	DSC20B	Woven (Red)
	Straight-Straight	DSC20BL	Woven (Blue)
25ft/7.63m	Straight-Straight	DSC25L	
	Straight-Right Angle	DSC25L	
0.5ft/15cm	Right Angle-Right Angle	DSC05LL	Patch Cable
0.8ft/25cm	Right Angle-Right Angle	DSC08LL	Patch Cable

GUITAR INSTRUMENT CABLE — SERIES STC

Length	Plug Type	Model No.	
6ft/1.83m	Straight-Straight	STC6	
10ft/3.05m	Straight-Straight	STC10	
	Straight-Right Angle	STC10L	
15ft/4.58m	Straight-Straight	STC15	
	Straight-Right Angle	STC15L	
20ft/6.10m	Straight-Straight	STC20	
	Straight-Right Angle	STC20L	
25ft/7.63m	Straight-Straight	STC25	
	Straight-Right Angle	STC25L	
0.5ft/15cm	Right Angle-Right Angle	STC05LL	Patch Cable
0.8ft/24cm	Right Angle-Right Angle	STC08LL	Patch Cable

MICROPHONE CABLES

Length	Plug Type	Model No.	
10ft/3.05m	XLR-XLR	NCCX10	
	XLR-1/4"	NCCP10	
20ft/6.10m	XLR-XLR	NCCX20	
	XLR-1/4"	NCCP20	
50ft/15.24m	XLR-XLR	NCCX50	
	XLR-1/4"	NCCP50	

SPEAKER CABLES

Length	Plug Type	Model No.	
6ft/1.83m	NEUTRIK® NL4FX-NEUTRIK® NL4FX	SPCN6G	
	1/4"-1/4"	SPCP6G	
10ft/3.05m	NEUTRIK® NL4FX-NEUTRIK® NL4FX	SPCN10	
	1/4"-1/4"	SPCP10	
25ft/7.63m	NEUTRIK® NL4FX-NEUTRIK® NL4FX	SPCN25	
	1/4"-1/4"	SPCP25	
50ft/15.24m	NEUTRIK® NL4FX-NEUTRIK® NL4FX	SPCN50	
	1/4"-1/4"	SPCP50	

Picks

Ibanez offers picks for just about every type of player with different feels, functions and looks. Function wise, the Grip Wizard series feature sand or rubber grips for superior gripping ability. Look wise, Ibanez offers a selection of original metallic colors and other unique colors and designs. And then there is the signature line of picks that are exactly what the artists use in most cases. In fact, Steve Vai won't use anything but his signature Ibanez picks.

Basic Color Series

Also, Ibanez covers the basic picks with orthodox shape color. You can choose from 5 kinds of shapes and 2 kinds of material.



Ibanez Classic Design Series

Three of Ibanez' legendary icons are now featured on picks — "Flying Finger", "Tree of Life" and a new design derived the "Ibanez checkmark".



Grip Wizard Series Rubber Grip

Non-slip rubber softly fits your finger. Available on polyacetal, or super hard PPS material picks.

PPS



Polyacetal



Grip Wizard Series Sand Grip

Dense and wide surface sand provides hard and sure grip.



BASIC COLOR SERIES

Shape	Material	Thickness (mm)	Model No.	Available color
4	Celluloid	Heavy	CE4H	BB/PL/SB/WH
4	Celluloid	Medium	CE4M	BB/PL/SB/WH
4	Celluloid	Thin	CE4T	BB/PL/SB/WH
6	Celluloid	Heavy	CE6H	BB/PL/SB/WH
6	Celluloid	Medium	CE6M	BB/PL/SB/WH
14	Celluloid	Heavy	CE14H	BB/PL/SB/WH
14	Celluloid	Medium	CE14M	BB/PL/SB/WH
16	Celluloid	Heavy	CE16H	BB/PL/SB/WH/SL/WH
16	Celluloid	Medium	CE16M	BB/PL/SB/WH/SL/WH
20	Celluloid	Heavy	CE20H	BB/PL/SB
20	Celluloid	Medium	CE20M	BB/PL/SB
Treech Pick	Celluloid		CE20L	PL

IBANEZ CLASSIC DESIGN SERIES

Shape	Material	Thickness (mm)	Model No.	Available color
16	Celluloid	Heavy	TL16H	BB/PL/SB/WH/GR/CL
16	Celluloid	Medium	TL16M	BB/PL/SB/WH/GR/CL
16	Celluloid	Heavy	CI16H	BB/PL/SB/WH/GR/CL
16	Celluloid	Medium	CI16M	BB/PL/SB/WH/GR/CL
16	Celluloid	Heavy	BI16H	BB/PL/SB/WH/GR/CL
16	Celluloid	Medium	BI16M	BB/PL/SB/WH/GR/CL

GRIP WIZARD SERIES

Shape	Material	Thickness (mm)	Model No.	Available color
16	Polyacetal w/ Rubber Grip	Extra Heavy	PS16XR	BB/PL/SB/WH
16	Polyacetal w/ Rubber Grip	Heavy	PS16HR	BB/PL/SB/WH
16	Polyacetal w/ Rubber Grip	Medium	PS16MR	BB/PL/SB/WH
16	Polyacetal w/ Sand Grip	Extra Heavy	PS16XS	BB/PL/SB/WH
16	Polyacetal w/ Sand Grip	Heavy	PS16HS	BB/PL/SB/WH
16	Polyacetal w/ Sand Grip	Medium	PS16MS	BB/PL/SB/WH
8	PPS w/ Rubber Grip	Heavy	PS8HR	BB
8	PPS w/ Rubber Grip	Medium	PS8MR	BB
17	PPS w/ Rubber Grip	Heavy	PS17HR	BB
17	PPS w/ Rubber Grip	Medium	PS17MR	BB
50	PPS w/ Rubber Grip	Extra Heavy	PS50XR	BB
50	PPS w/ Rubber Grip	Heavy	PS50HR	BB

Signature Models

Steve Vai

Here are the Vai's signature picks, and he won't use anything else.



The Offspring

Be different. The Offspring picks feature the band symbol on one side, and the band name written in Japanese on the other.



Paul Gilbert

This original shaped picks are what THE guitarist with style and speed need.



Actual Size



4



6



8



14



16



17



20



30

Bags

IGB701-BK
Bag for EI guitar



IBB701-BK
Bag for EI bass



Ultra-Deluxe Bags

Ultimate gig bag for players on the go. The new IGB701/IBB701 securely protects your instruments with extra pads from the body to the neck and with the bottom cover. These bags come with water-resistant exteriors and extra-padded backpack straps.

IDGB5-BK
Bag for EI guitar

IDBB5-BK
Bag for EI bass



Double Bags

Ibanez double gig bag lets you carry two instruments in one bag. With the wheel on the bottom, you can carry your guitars without any hassle.



GBP
Bag for EI guitar

BBP
Bag for EI bass



Backpack

Standard Bags

Even the most affordable bags have features to hold your instruments securely. Adjustable shoulder straps and easy grip handle equipped.

ISGB5-BK Bag for EI guitar
ISBB5-BK Bag for EI bass



Deluxe Bags w/Backpack

The GBP/BBP bags feature a detachable backpack. Not only is it handy for carrying accessories around along with your guitar or bass, it detaches for typical backpack use.



ISGE5-BK
Bag for EI guitar

ISGE5-BL

ISGE5-GY

ISGE5-PK

ISGE5-YW

ISGE5-WH

Colored Bags

Why only black bags? Now Ibanez offers gig bags in various colors to accommodate your own style.

Original Shape Bag

IGH7
Bag for EI guitar



Cases

No matter which Ibanez guitar or bass you choose, you'll want to protect your valuable investment. Do it in style with an authentic Ibanez hard shell case.

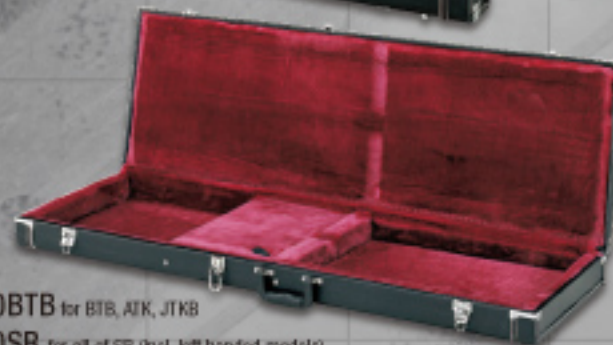
W50RG for all of RG, S, SV, SA
(incl. 27" scale & left handed models)
W50SRZ for SRZ



M100C
for RG, RG7, S, SA
(except 27" scale & left handed models)



MB100C
for SR, SRX, EDB
(except left handed models)



W50BTB for BTB, ATK, JTKB
W50SR for all of SR (incl. left handed models)

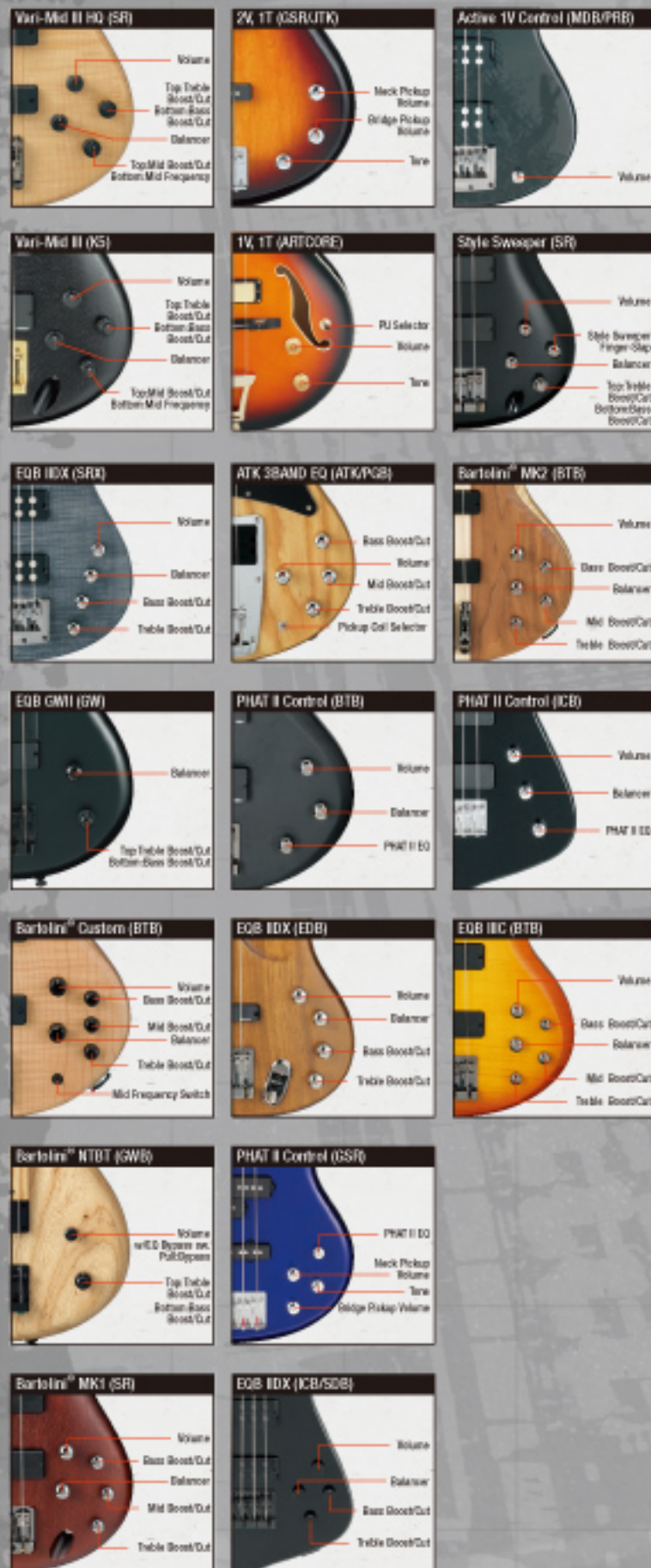


AS-C for AS
GB-C for AG, AGS
AR-C for GAX, Artist

Finishes



Electronics



Neck Dimensions

NECK MODEL	SCALE LENGTH	WIDTH AT NUT	WIDTH AT 1ST FRET	THICKNESS AT 1ST FRET	THICKNESS AT 12TH FRET	RADIUS
GUITAR NECK DIMENSIONS						
APEX	648mm/25.5"	40mm	58mm	18mm	21mm	430mm f
AH	628mm/24.75"	43mm	57mm	20mm	22mm	305mm f
APORE (AF/AF/NG/NI)	628mm/24.75"	43mm	58.5mm	20mm	26.5mm	305mm f
ARTURE (AG/AG/NG/AG)	628mm/24.75"	43mm	58.5mm	20mm	22.5mm	305mm f
ATK/ART	628mm/24.75"	43mm	58.5mm	20mm	22.5mm	305mm f
BGN	648mm/25.5"	43mm	58mm	18mm	20mm	430mm f
G432	628mm/24.75"	43mm	58mm	20mm	22mm	305mm f
GB	628mm/24.75"	43mm	57mm	20mm	23mm	305mm f
GB15	628mm/24.75"	44mm	58mm	20mm	23mm	305mm f
GBG1	648mm/25.5"	43mm	58mm	19.5mm	21.5mm	400mm f
GBG2	648mm/25.5"	43mm	58mm	19.5mm	21.5mm	400mm f
GGRN	590mm/22"	42mm	56mm	20.5mm	23mm	400mm f
GSA	648mm/25.5"	42mm	58mm	20.5mm	23mm	400mm f
JBA	648mm/25.5"	43mm	56mm	19mm	21mm	430mm f
JS	648mm/25.5"	42mm	58mm	20mm	22.3mm	250mm f
JSM	628mm/24.75"	42.5mm	57mm	20.2mm	23.3mm	COMPOUND
JJK	648mm/25.5"	43mm	56mm	21.5mm	23mm	305mm f
NEB	648mm/25.5"	43mm	58mm	18mm	20mm	430mm f
MTM	648mm/25.5"	43mm	56mm	19mm	21mm	400mm f
NDM	648mm/25.5"	42mm	56mm	20mm	22mm	240mm f
QVA	618mm/24.4"	43mm	58mm	18mm	21mm	300mm f
PGM	648mm/25.5"	43mm	58mm	18mm	20mm	430mm f
PW	628mm/24.75"	43mm	57mm	21mm	23mm	305mm f
PA (MGOS)	648mm/25.5"	43mm	57mm	20mm	26.5mm	305mm f
SA/SAS	648mm/25.5"	43mm	56mm	20.5mm	23mm	400mm f
SR	628mm/24.75"	43mm	58.5mm	20mm	22.5mm	305mm f
UDRA	648mm/25.5"	48mm	68mm	19mm	21mm	430mm f
UDRA-8	685.8mm/27"	54mm	78mm	20mm	21.5mm	430mm f
W	648mm/25.5"	48mm	68mm	19mm	21mm	430mm f
WZARD	648mm/25.5"	43mm	58mm	18mm	20mm	430mm f
WZARD II	648mm/25.5"	43mm	58mm	19mm	21mm	400mm f
WZARD II 7	648mm/25.5"	48mm	65mm	19mm	21mm	400mm f
BASS NECK DIMENSIONS						
ARTCORE	773mm/30.3"	42mm	63mm	21.5mm	25mm	305mm f
ATK	664mm/26.1"	42.5mm	63mm	21mm	24mm	305mm f
ATK5	664mm/26.1"	45mm	68mm	21mm	24mm	305mm f
BT4 (except 2006/2007)	889mm/35"	41mm	64mm	20mm	22mm	305mm f
BT4 (2006/2007)	889mm/35"	38mm	60mm	20.5mm	22.5mm	305mm f
BT5 (except 305)	889mm/35"	47mm	78mm	20mm	22mm	500mm f
BT5 (305)	889mm/35"	45mm	68mm	20.5mm	22.5mm	305mm f
BT6	889mm/35"	54mm	88mm	20mm	22mm	500mm f
EB4	664mm/26.1"	38mm	62mm	20.5mm	22mm	305mm f
EB5	664mm/26.1"	45mm	67mm	20.5mm	22mm	305mm f
GWB35	664mm/26.1"	45mm	67mm	19mm	21mm	305mm f
GWB1005	664mm/26.1"	45mm	67mm	19mm	21mm	500mm f
KD4	664mm/26.1"	40mm	64mm	20mm	23mm	305mm f
JTD	664mm/26.1"	40mm	64mm	20mm	23mm	305mm f
KS	664mm/26.1"	45mm	67mm	19.5mm	21.5mm	305mm f
JUCB4	664mm/26.1"	38mm	62mm	21mm	23mm	305mm f
NGB4	664mm/26.1"	42.5mm	63mm	21mm	24mm	305mm f
PR4	664mm/26.1"	38mm	62mm	21mm	23mm	305mm f
SDB4	664mm/26.1"	43mm	63mm	22.5mm	22.5mm	305mm f
SR4 neck-thru	664mm/26.1"	38mm	62mm	21.5mm	23.5mm	305mm f
SR4	664mm/26.1"	38mm	62mm	21.5mm	23.5mm	305mm f
SR4	664mm/26.1"	41mm	63mm	21mm	22mm	305mm f
SR5 neck-thru	664mm/26.1"	45mm	67mm	21.5mm	23.5mm	305mm f
SR5	664mm/26.1"	45mm	67mm	21.5mm	22.5mm	305mm f
SR5	664mm/26.1"	45mm	67mm	21mm	22mm	305mm f
SR6 neck-thru	664mm/26.1"	54mm	83mm	21.5mm	23.5mm	400mm f
SR6	664mm/26.1"	54mm	83mm	20.5mm	22.5mm	400mm f
SK4	664mm/26.1"	38mm	62mm	21mm	23mm	305mm f
SK5	664mm/26.1"	45mm	73mm	21mm	23mm	400mm f

Pickup Character

MODEL NO.	NAME	OUTPUT POSITION	CONSTRUCTION	DESCRIPTION KEY	
IBANEZ GUITAR PICKUPS					
ACH-BL	ACH-BL	B/H	C	Original dual blade humbucking pickup. Great between neck and bridge.	
ACH1	ARTCORE 1	N/H	C	Clean sounding with a light output.	
ACH2	ARTCORE 2	B/H	C	Bridge version of ART.	
ACH3	ACH3	N/H	C	Multilayer clear lacquer for tone.	
ACH4	ACH4	B/H	C	Multilayer clear lacquer for tone.	
ACH1-S	ACH1-S	N/H	C	Light tone with added treble.	
ACH2-S	ACH2-S	B/H	C	Bridge version of ART-S.	
AH1	AXIS HUMBUCKER 1	N/H	C	Deep responsive and full sounding medium output with lots of character. Consider for dancing.	
AH2	AXIS HUMBUCKER 2	B/H	AL	Full range output. Micro-S magnet provides excellent clarity in harmonics and sustained notes.	
AH5	AXIS HUMBUCKER 5	N/H	C	Deep responsive and full sounding medium output with lots of character. Consider for dancing.	
AH6	AXIS HUMBUCKER 6	B/H	AL	Full range output. Micro-S magnet provides excellent clarity in harmonics and sustained notes.	
AH7-1	AXIS HUMBUCKER 7-1	N/H	C	Seawing version of AH pickup.	
AH7-2	AXIS HUMBUCKER 7-2	B/H	C	Seawing version of AH2 pickup.	
AH51	AYS SINGLE 1	N/S	AL	Traditional winding style of pickup with increased output for neck position.	
AH52	AYS SINGLE 2	N/A	AL	Traditional winding style of pickup with increased output for neck position.	
CCB1	CCB1	N/H	AL	Midrange output. Micro-S magnet combines crisp edge with high lows.	
CCB2	CCB2	B/H	AL	Midrange output. Micro-S magnet combines crisp edge with high lows.	
GB SPECIAL	GB SPECIAL	B/H	AL	Handwired pickup designed for bridge. Focus on higher frequencies. Warm, well rounded output with low feedback.	
GB SPECIAL	GB SPECIAL	N/H	AL	Neck version of GB.	
HFS1	HFS1	N/S	C	Single-coil brightness without the susceptibility to hum noise.	
HFS2	HFS2	B/S	C	Single-coil brightness without the susceptibility to hum noise.	
HGD1	Hot Gender 1	N/H	AL	Hot, but stays enough to keep pickup in the string.	
HGD2	Hot Gender 2	B/H	C	Hot, but stays enough to keep pickup in the string.	
INF1	INFINITY 1	N/H	C	Penetration and response with warm clear tone and added output.	
INF2	INFINITY 2	B/H	AL	Classical midrange output. Micro-S magnet to sustain string body. Consider for dancing.	
INF3	INFINITY 3	N/H	C	Provides the dynamic used for climbing and flying.	
INF4	INFINITY 4	B/H	AL	Efficient hot pickup. Warm sounding with good harmonics.	
IPF1	INFINITY SINGLE 1	N/S	AL	Warm single coil tone with added output.	
IPF3	INFINITY SINGLE 3	M/S	AL	Traditional winding style of high output. Designed to work with humbuckers in the split position.	
LZ1-N	LzE-N	N/H	C	High output neck pickup, active pickup operated by 9V battery (3 volts).	
LZ1-B	LzE-B	B/H	C	High output bridge pickup, active pickup operated by 9V battery (3 volts).	
ND1-N	Neo-Z-N	N/H	ND	Powerful and optimized sound, but not really, enough high tops.	
ND1-B	Neo-Z-B	B/H	ND	Powerful and optimized sound, but not really, enough high tops.	
PSND1	PSND1	N/H	C	High output in the neck position with no "midrange."	
PSND5	PSND5	N/V	S	AL	High output with complete clarity.
PSND2	PSND2	B/H	C	High output with unusual harmonics.	
S1	SINGLE 1	N/V	S	AL	Traditional winding, hot high output single coil with Micro-S pickups for lower string output. Designed to work with humbuckers in the split position.
S58	SUPER 58	A/H	AL	Clear, warm and versatile. Handles both jazz and rock without feedback.	
SLS8	SILENT 58	A/H	AL	Clear, warm and versatile. Handles both jazz and rock without feedback.	
ST1	Short Neck	M/S	ND	Strong magnet provides full output in low profile setting.	
TDB1	True-Duo Backer	B/V	C/AL	Hot signal for use in bridge position. Single coil with two coils.	
TDB2	True-Duo Blast 1	N/H	C/AL	Some final construction on the True Duo Backer, but the winding makes the True Duo Backer as a pick. Bridge and Neck.	
TDB3	True-Duo Blast 2	B/H	C/AL	Some final construction on the True Duo Backer, but the winding makes the True Duo Backer as a pick. Bridge and Neck.	
V7	V7	N/H	C	High 1, hot high. Very dynamic for dancing and flying.	
V8	V8	B/H	AL	Warm and optimized hot pickup with unusual overtones. Good harmonics without excessive brightness.	
Y77	Y77	N/H	C	Seawing version of Y7 pickup.	
Y87	Y87	B/H	C	Seawing version of Y8 pickup.	
IBANEZ BASS PICKUPS					
ACHB-2	ACHB-2	B/V	H/P	C	High output humbucking pickup.
ADXS	ACTIVE DYNAMIX 5	B/V	N/A	C	Warm, dynamic, punchy sound with lots of string. Two different sized coils provide wide string output. Individually selectable for neck and bridge position.
ATK	ATK TRIPLE COIL	B	H/P	C	Powerful bottom end natural high end.
DCS4	DUAL COIL SOAP BAR	B/V	H/P	C	Powerful wide range tone.
DPR-4	DYNAMIX FULL RANGE	B/V	H/P	C	Medium active passive pickup with split neck and separate dynamics.
DPR-5	DYNAMIX FULL RANGE	B/V	H/P	C	5 string version of DPR-4 pickup.
DX4	DYNAMIX 4	B/V	H/P	C	Four different sized pickups provide wide string output. Full range, punchy tone with wide range of pickup.
IBANEZ GUITAR PICKUPS (INDIVIDUAL IBANEZ PICKUPS ARE NOT SOLD BY IBANEZ)					
BARTOLINI™ BASS PICKUPS (INDIVIDUAL BARTOLINI™ PICKUPS ARE NOT SOLD BY IBANEZ)					
DIX	DYNAMIX 5	B/V	H/P	C	5 string version of DIX.
DXH-N	ERGODYNAMIX	B/V	H/P	C	Powerful with good midrange punch. Designed specifically to work with the little body models of Ergodyne bass.
DXS	DYNAMIX 5	B/V	H/P	C	Designed to be used with or without pickup system for light high end.
EXF-4	EX FULL RANGE 4	B/V	H/P	C	Balanced balanced sound across wide string.
EXF-5	EX FULL RANGE 5	B/V	H/P	C	5 string version of EXF-4.
FFR-4	PASSIVE FULL RANGE	B/V	H/P	C	Powerful full range pickup with added low ends.
FFR-5	PASSIVE FULL RANGE	N	H/P	C	Powerful full range pickup with added low ends.
FFR-AL4	PASSIVE FULL RANGE	B/V	H/P	AL	Powerful active magnet pickup with exceptional clarity and very even response.
FFR-ALS	PASSIVE FULL RANGE	B/V	H/P	AL	5 string version of FFR-AL.
PSNDU	PSNDU	B/V	H/P	C	High output with added highs.
PSNDP	PSNDP	B/V	H/P	C	High output with punchy attack.
SFR-GWB	SOULIC FULL RANGE	B/V	H/P	C	Custom wound for SFR25. Quick attack, capacitor dynamics and added lows.
BARTOLINI™ GUITAR PICKUPS (INDIVIDUAL BARTOLINI™ PICKUPS ARE NOT SOLD BY IBANEZ)					
BTB BASS					
GWB	BARTOLINI WILLIS	B	H/P	C	Handwired pickup system especially designed for BTB bass. Custom coil for neck, and warm and clear output.
MK1	MM1	B/V	H/P	C	Well balanced tone.
MK2	MM2	B/V	H/P	C	More active sound than MK1 for 4 coils construction.
SR BASS	BARTOLINI CUSTOM	B/V	H/P	C	Handwired passive pickup. Consider duty to well balanced low end response.
DIMARZIO™ GUITAR PICKUPS (INDIVIDUAL DIMARZIO™ PICKUPS ARE NOT SOLD BY IBANEZ)					
DPI 51	PRO-PRO™	B/V	H	AL	Clear, balanced sound with added mids, output and clarity.
DPI 53	FREED™	B	H	AL	Strong neck and wide range of frequencies and overtones. Designed for live playing.
DPI 58	EVOLUTION™	N	H	AL	Colored to BT 138, for punch and lead. Designed for Steve Vai.
DPI 59	EVOLUTION™	B	H	AL	Light, aggressive and lively. Wide range of overtones.
DPI 65	BREED™	N	H	AL	Designed for Steve Vai. Clear, 50% strength full humbucking tone. Better than a PAF-130, but not as hot as an PAF-130.
N/A	BREED™	H	S		High clear tone.
N/A	JEM SINGLE	H	S	AL	25k resistance. Clear, single coil tone. Colored for perfect balance with humbucking.
DPI 66	BREED™	B	H	AL	Bridge version of the DPI 65.
DPI 13	PAF-JE	N	H	AL	Vintage humbucking sound with blended clear low end/mids and highs.
DP700	BLAZE™ II	N	H	C	Medium punch, warm, clean tone.
DP701	BLAZE™ II	H	S	C	High clear tone.
DP702	BLAZE™ II	B	H	C	High punch, punchy low end and mids, clean note.
DP759	PRO-7™	B/V	H	C	Three to PAF-7. Clear sounding, lower output pickup that performs like the classic humbucker of the late '50's.
DPS1	EVOLUTION™	N	S	C	High S, clear tone.
HLM-B	HLM Bridge	B	H	C	High mids, warm, harmonics.
HLM-N	HLM Neck	N	H	C	Warm, clear, strong attack.
HLM-S	HLM Middle	N	S	C	Warm, punchy, high output.
N/A	D Activator™	B	H	C	Low punchy, without harmonics. Requires heavily to hot high pick stick.
N/A	D Activator™	N	H	C	Well balanced of above.
N/A	D Activator™	B	H	C	Clear stringer version of D Activator™.
N/A	D Activator™	N	H	C	Clear stringer version of D Activator™.
N/A	DIMARZIO HZ (H) for BT	B/V	H	C	Remotely drive with medium output.
N/A	DIMARZIO HZ (S) for BT	H	S	C	Warm tone and clean well with humbuckers.
N/A	DIMARZIO HZ (N) for S	N	H	C	Powerful sounding with quick response.
N/A	DIMARZIO HZ (N) for S	B	H	C	Bridge version of above. Balanced harmonics and overtones.
N/A	DIMARZIO HZ (S) for S	H	S	AL	Well balanced sound with clear tone.
Seymour Duncan™ GUITAR PICKUPS (INDIVIDUAL Seymour Duncan™ PICKUPS ARE NOT SOLD BY IBANEZ)					
AHB-7 neck	Blastcoils™	N	H	AL	Active humbucker for aggressive/rock style.
AHB-7 bridge	Blastcoils™	B	H	C	Active humbucker for aggressive/rock style.
TB-10	Full Shred™	B	H	AL	Hot and chunky, set with clear definition.
Seymour Duncan™ BASS PICKUPS (INDIVIDUAL Seymour Duncan™ PICKUPS ARE NOT SOLD BY IBANEZ)					
N/A	Duncan/Ibanez	B/V	H/P	AL	Powerful pickup, enhanced high end.
EMG™ GUITAR PICKUPS (INDIVIDUAL EMG™ PICKUPS ARE NOT SOLD BY IBANEZ)					
ENG 60	N/A	N	H	C	Delivers clear sound with a lot of midrange.
ENG 81	N/A	B	H	C	Clear, crisp attack and flexible tone for ballroom rocking.
ENG 85	N/A	N	H	AL	Delays feedback and is the high end.
ENG 808	N/A	B/V	H	AL	For 5 string, easily balanced and clear high end.

Ibanez Artists



Neil Jones (U2, Doves, Kill, White, Gorky)



Wladimir Khorjii (S.A.S.T.)



Matthew Korchosower (Minsk)



Mikolaj Kobay



Igor Lapalika (Nogu Svelo)



Yaroslav Robert (Yaroslav Robert)



Philippe Robert (Fish Route, Zorobab)



Leonora Rojas (Caleo)



Glen Fajardo (The Casahuate)



Igor Fomarev (Minsk)



Fabián Leo (Eros Ramazzotti)



Eugeny Levin (Minsk)



Matt Lewis (A Day Called Death)



Lisa (Caleo)



Patrick Rorick (The Rockers, The Rockers, The Rockers)



Phung Jatsabong Rasmussen (Minsk)



Oliver Schenck (Luzon Island)



Alejandro Silva (Hoyos de Sta. Piedad, Guadalupe)



Ralf Sommerfeld (Schwarzwald)



Manu Usher (M.E.)



Juan Pablo Lopez



Juan Carlos Martín Laper (MAGO DE OZ)



Matt Lewis (A Day Called Death)



Brian Redford (Gold Coast, I Chello, Don't Fall)



Chris Stalder (K Age, Justyord)



Jan Synnott (Jr. Jinn)



Daniel Tella (Caleo, Solo Project)



Sébastien Tadi (Minsk)



Sébastien Tadi (Minsk)



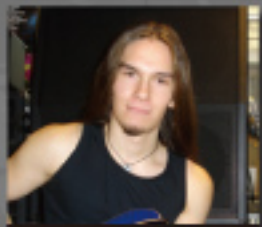
Leo Marks (Biggie, Mo'Nasty, Horvitz)



Malia (Caleo)



Christophe Håkström (Caleo)



Taru Mäntyselkä (Winter)



Krzysztof Masiak (Chylniak)



Jonas Valero (Tana, Iki)



Chema Wilchez



Evert Waldress (PT)



James Thompson (A Day Called Death)



Carlo Ward (Biggie, Mo'Nasty, Horvitz)



Karel Marcell (Gordian, The Gordian, The Gordian)



Thomas Marler (Caleo)



Pekko Oikarinen (Caleo)



Magyar Orosz



David Peller (Caleo, Iki)



Stefano "Solo" Kalla (Iki)



Lucas Takalo (Lucas Takalo Band)



Pavel Zabanov



Eor Zoljan



Joak Zylka (Minsk)



Maver Jirajak Paopon (Jaded Cats)



Zilber "Mister" Perle (Minsk)



Angelo Pizzarello (Minsk)



Sergey Popov (Iki)



Ricky Portera (Lucas Takalo)



Rocco "Rik" Rival (Gold Coast, Dark Coast)



Alberto Bellini "El Guapo" (Iki, Iki, Iki)



Lorenza Felici (Minsk, Iki)



Niko Dal Negro (Caleo)



Barbara West (Helsinki, Helsinki, Helsinki)



Aldy Raskid (Caleo, Tokyo, Iki)



Paul Reid (Caleo, Iki, Iki, Iki)



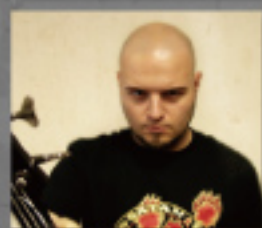
Bradley Reihana



Christopher Rine (Iki)



Ritvan (Iki, Iki, Iki)



Sven Janssens (Minsk)



Hans J. Kallio (Music Academy)



Wojciech Mazowiecki (Pink Floyd)



Razvan (Iki, Iki, Iki)



Marcelo Da Vezeia (Minsk)

