



# Ibanez

## 2007

electric guitars, electric basses,  
amplifiers, effects & accessories catalog

## TABLE OF CONTENTS

### ELECTRIC GUITARS

- RG Prestige ...4-11
- RG Tremolo ...12-13
- GRG ...14
- RG Fixed ...15
- S ...16-19
- SZ ...20-21
- X ...22-23
- Signature Guitars ...24-29
  - Artist ...30-31
  - GAX ...32
  - JTK / IC / AR ...33
  - SA ...34-36
  - Artcore Custom ...38-39
  - Artcore ...40-44
- Signature Guitars (box) ...46-47

### ELECTRIC BASSES

- SR Prestige ...50-51
- SR 4string ...52-55
- SR 5/6string ...56-57
- SRX ...58-59
- ATK ...60
- Signature Basses ...61-63
  - EDB ...64-65
  - BTB ...66-69
  - RD ...70
  - ICB ...71
- GAXB / ARTCORE ...72
- Jumpstart Packages / GRGM ...73

### ELECTRONICS

- IBX ...76-77
- Therminon ...78-79
- Sound Wave ...80-81
- Acoustic Amplifiers ...82
- Amplifiers / Tuners ...83
- Effects ...84-85

### ACCESSORIES

- Picks ...86-87
- Bags / Cases ...88-89
- Cables / Accessories ...90-91
- Guitar / Bass Specifications ...92-95

## Prestige

combine the right selection of rich tones, collector's class looks, and the extreme durability and playability needed by the touring pro. These are some of the finest performance instruments we've ever made.

Prestige guitars and basses are the result of extensive work by our luthiers and designers in Sun Valley, California and Nagoya, Japan. By making, modifying and maintaining instruments for our esteemed group of Ibanez artists, our luthiers and designers have come to a unique understanding of the stylistic, recording and performing needs of today's guitarists. The ideas and inspiration from that work, the imagination of our designers, and the finest materials and electronics available are what set Prestige instruments apart from anything else you can own.

# Rg Prestige

These are the machines of the gods...with drop dead good looks, sonic lethality and the devastating power and control of a precision double-locking trem. RG Prestige guitars feature flawless Japanese craftsmanship, the finest materials and each axe is perfectly matched with just the right choice of DiMarzio®, Seymour Duncan®, EMG®, or IBZ pickups.

## The Basics

- The ultimate in the ultimate metal guitars.
- Six-, seven-, and new for 2007, the first RG eight-string.
- Fast, flat and thin Wizard necks with Prestige finishing for supreme comfort.
- Gotoh® precision machines.
- Includes deluxe Prestige case.



### RGT320Q WRS

- 5pc Wizard Maple/Wenge neck-thru *Z3055p*
- AAA Quilted Maple top /Mahogany wing body
- Jumbo frets
- Edge Pro bridge
- DiMarzio® IBZ-N (H) neck pu
- DiMarzio® IBZ-B (H) bridge pu
- color : RBB, WRS



### RGT320Q RBB

- 5pc Wizard Maple/Wenge neck-thru *Z3055p*
- AAA Quilted Maple top /Mahogany wing body
- Jumbo frets
- Edge Pro bridge
- DiMarzio® IBZ-N (H) neck pu
- DiMarzio® IBZ-B (H) bridge pu
- color : RBB, WRS



### RGT220A NTF

- 5pc Wizard Maple/Wenge neck-thru *Z3055p*
- Ash wing body
- Jumbo frets
- Edge Pro bridge
- DiMarzio® IBZ-N (H) neck pu
- DiMarzio® IBZ-B (H) bridge pu
- color : NTF



The Edge Pro features a unique Sound Metal Chip on each saddle which helps to increase sustain right at the most critical area, the intonation point.



The 5pc thru-body neck on RGT Prestige models offers massive sustain, easy playability at the upper frets, and incredible strength and stability.



DiMarzio® IBZ Pickups on RGT220A.

# Rg Prestige



## RG2570E VGD

- 5pc Wizard Maple /Walnut neck *Beatsign*
- Basswood body
- Jumbo frets
- Edge Pro bridge
- DiMarzio® IBZ-N (H) neck pu
- DiMarzio® IBZ-S (S) mid pu
- DiMarzio® IBZ-B (H) bridge pu
- color : VGD, VSL



## RG2570E VSL

- 5pc Wizard Maple /Walnut neck *Beatsign*
- Basswood body
- Jumbo frets
- Edge Pro bridge
- DiMarzio® IBZ-N (H) neck pu
- DiMarzio® IBZ-S (S) mid pu
- DiMarzio® IBZ-B (H) bridge pu
- color : VGD, VSL



## RG2620E CBK

- 5pc Wizard Maple /Walnut neck *Beatsign*
- Basswood body
- Jumbo frets
- Edge Pro bridge
- DiMarzio® IBZ-N (H) neck pu
- DiMarzio® IBZ-S (S) mid pu
- DiMarzio® IBZ-B (H) bridge pu
- color : CBK



## RG2550E GK

- 5pc Wizard Maple /Walnut neck *Beatsign*
- Basswood body
- Jumbo frets
- Edge Pro bridge
- DiMarzio® IBZ-N (H) neck pu
- DiMarzio® IBZ-S (S) mid pu
- DiMarzio® IBZ-B (H) bridge pu
- color : GK

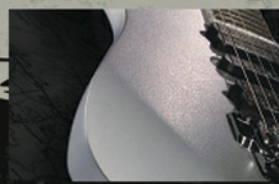


## RG2610E BK

- 5pc Wizard Maple /Walnut neck *Beatsign*
- Basswood body
- Jumbo frets
- Edge Pro bridge
- Seymour Duncan® TB-10 Full Shred™ (H) bridge pu
- color : BK



Newly designed sharktooth inlays featured on RG2xxx Prestige models.



Textured finish on the RG2570E VSL.



The Cubed Black Pewter finish on the RG2620E is individually hand-stamped.



5pc RG Prestige maple/walnut necks combine the easy playability and speed of a thin neck with extraordinary stability and strength.



Seymour Duncan® Full Shred™ pickup mounted on RG2610E.

# Rg Prestige



**RG1570 SDB**

- 5pc Wizard Maple /Walnut neck *BlueSign*
- Basswood body
- Jumbo frets
- Edge Pro bridge
- V7 (H) neck pu
- S1 (S) mid pu
- V8 (H) bridge pu
- color : MRB, MRR, SDB



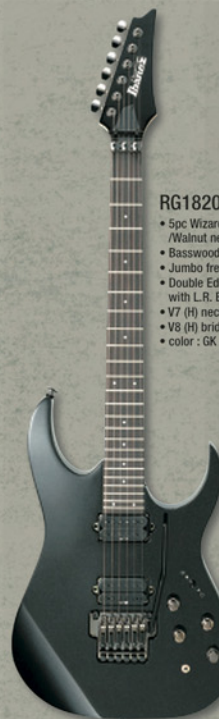
**RG1570 MRB**

- 5pc Wizard Maple /Walnut neck *BlueSign*
- Basswood body
- Jumbo frets
- Edge Pro bridge
- V7 (H) neck pu
- S1 (S) mid pu
- V8 (H) bridge pu
- color : MRB, MRR, SDB



**RG1570 MRR**

- 5pc Wizard Maple /Walnut neck *BlueSign*
- Basswood body
- Jumbo frets
- Edge Pro bridge
- V7 (H) neck pu
- S1 (S) mid pu
- V8 (H) bridge pu
- color : MRB, MRR, SDB



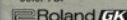
**RG1820X GK**

- 5pc Wizard Maple /Walnut neck *BlueSign*
- Basswood body
- Jumbo frets
- Double Edge Pro bridge with L.R. Baggs® piezo
- V7 (H) neck pu
- V8 (H) bridge pu
- color : GK



**RG1520G BP**

- 5pc Wizard Maple /Walnut neck *BlueSign*
- Basswood body
- Jumbo frets
- Double Edge Pro bridge for Roland® GK
- V7 (H) neck pu
- V8 (H) bridge pu
- color : BP



**RG1527 RB**

- 5pc Ultra Maple /Wenge neck *BlueSign*
- Basswood body
- Jumbo frets
- Edge Pro 7 bridge for Roland® GK
- V77 (H) neck pu
- V87 (H) bridge pu
- color : RB



**RG2228 GK**

- 5pc Ultra Maple /Wenge neck *BlueSign*
- Basswood body
- Jumbo frets
- FX EDGE III-8
- EMG® 808 neck pu
- EMG® 808 bridge pu
- color : GK



Special textured "Suede Black" finish of RG1570-SDB.



**Double Edge Pro Tremolo on RG1820X**  
The Double Edge Pro allows brilliant acoustic-style tones, which can also be blended with electric tones. Piezos by L.R. Baggs® are isolated to eliminate palm noise and a 2-band EQ on the piezo output provides added tone control.



The Edge Pro tremolo on the RG1520 is GK compatible, which allows access to Roland's GK effects and midi control. Isolated piezo elements offer superior tracking for controlling midi devices.



Ibanez FX EDGE III-8 double-locking fixed bridge was made specifically to handle and augment the awesome extended range of the RG2228GK 8-string.



The U.S.A.-made EMG® 808 active pickups—the first ever full-production 8-string pickups.

# RGA Prestige

Our RGA Prestige feature everything our RG Prestige models do. The highest Japanese craftsmanship, the right choice of premium pickups and Wizard Prestige necks. With two important exceptions: arched tops for even more playing comfort and the Gibraltar Plus fixed bridge which combines simplicity and the ability to handle massive metal tones and lowdown tuning that's just plain sick.

## The Basics

- Fast, flat and thin Wizard necks with Prestige finishing for supreme comfort.
- Massive Gibraltar Plus fixed bridge allows wide range of intonation adjustment needed for heavy strings.
- Gotoh® precision machines.
- Includes deluxe Prestige case.



### RGA321F SPB

- 5pc Wizard Maple / Walnut neck *23.5mm*
- Flamed Maple/Mahogany body
- Jumbo frets
- Gibraltar Plus bridge
- DiMarzio® IBZ-N (H) neck pu
- DiMarzio® IBZ-B (H) bridge pu
- color : SPB

### RGA121H CDO

- 5pc Wizard Maple / Walnut neck *23.5mm*
- Mahogany body
- Jumbo frets
- Gibraltar Plus bridge
- V7 (H) neck pu
- V8 (H) bridge pu
- color : CDO, CDR



### RGA121H CDR

- 5pc Wizard Maple / Walnut neck *23.5mm*
- Mahogany body
- Jumbo frets
- Gibraltar Plus bridge
- V7 (H) neck pu
- V8 (H) bridge pu
- color : CDO, CDR



DiMarzio® IBZ pickups on RGA321F SPB.



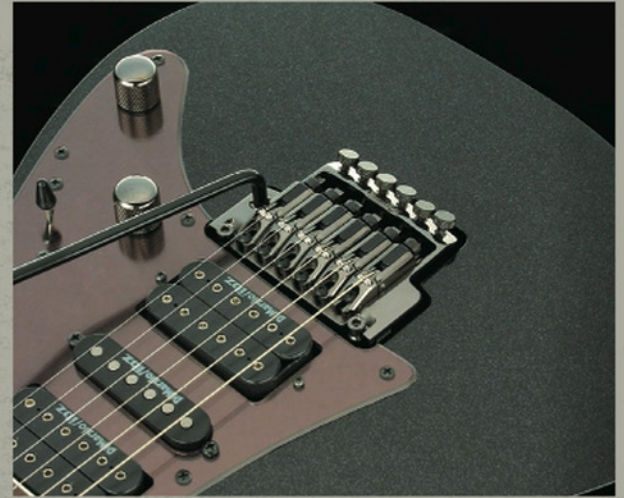
The brilliant highs and looks of a 16mm arched maple top guarantee visual and sonic attention from the front row to the back of the balcony.



Gibraltar Plus bridge on RGA121H-CDO.

## Bridges

In the last two decades, no other guitar maker has done so much to advance the art and science of the bridge. The Edge Pro, Edge III and Gibraltar Plus represent significant advances in the evolution of the guitar bridge.



### Edge Pro

The Edge Pro features a unique Sound Metal Chip on each saddle which help increase sustain right at the most critical area, the intonation point.

To avoid the problem of string holder blocks getting lost during string changes, the Edge Pro's sliding string holders are actually part of the bridge and won't drop from the saddle unit. With the Edge Pro design, there's no need to cut off the ball of your strings when installing new strings.



### Edge III

The new Edge III is similar in construction and feel to the original Edge locking trem, however it also features lower profile fine-tuners inspired by the Lo-Pro Edge and massive new-design saddles.



### Gibraltar Plus

A massive metal sound requires a massive metal bridge. The Gibraltar Plus combines the smooth surfaced Gibraltar III bridge with the Quik Change tailpiece – in one unit. The Gibraltar Plus allows a wide range of intonation adjustment needed for heavy gauge strings. In addition, the saddles won't fall out during string changes.

For two decades, the RG has reigned as the unquestioned monarch of metal guitars. Why? Because the RG has the perfect combination of fast, flat necks, the right pickups and pickup placement, and precision trem systems to mete out creative destruction. And because the RG has evolved and expanded along with the metal genre it was designed for, which is why the 2007 RG line offers a vast selection that dwarfs anything else remotely comparable.

## The bASics

- Double-locking trem systems allow radical effects and sonic chaos with total tuning stability.
- 24-fret thin Wizard II necks in bolt-on and neck-thru versions.

### RGR320EX RBK

- 3pc Wizard II neck
- Basswood body
- Jumbo frets
- Edge III bridge
- Designed by EMG® (H) neck pu
- Designed by EMG® (H) bridge pu
- color : RBK

### RGT42DX IPT

- 5pc Wizard II Maple /Walnut neck-thru
- Mahogany body
- Jumbo frets
- Edge III bridge
- INF1 (H) neck pu
- INF2 (H) bridge pu
- color : IPT

### RGT42DXFM BBL

- 5pc Wizard II Maple /Walnut neck-thru
- Flamed Maple top /Mahogany body
- Jumbo frets
- Edge III bridge
- INF1 (H) neck pu
- INF2 (H) bridge pu
- color : BBL

### RG350EX BK

- 3pc Wizard II neck
- Basswood body
- Jumbo frets
- Edge III bridge
- INF3 (H) neck pu
- INF3 (S) mid pu
- INF4 (H) bridge pu
- color : BK

### RG350DX WH

- 3pc Wizard II neck
- Basswood body
- Jumbo frets
- Edge III bridge
- INF3 (H) neck pu
- INF3 (S) mid pu
- INF4 (H) bridge pu
- color : WH

### RG370DX BLH

- 3pc Wizard II neck
- Basswood body
- Jumbo frets
- Edge III bridge
- INF3 (H) neck pu
- INF3 (S) mid pu
- INF4 (H) bridge pu
- color : BK, BLH
- Also available left-handed in BK finish.

### RG370DX BK

- 3pc Wizard II neck
- Basswood body
- Jumbo frets
- Edge III bridge
- INF3 (H) neck pu
- INF3 (S) mid pu
- INF4 (H) bridge pu
- color : BK, BLH
- Also available left-handed in BK finish.



The RGR320EX is equipped with pickups custom designed by EMG®.



The increased sustain and playability provided by neck-thru construction have made RGT models some of the highest demand models in the history of the RG.



RG300 Series models feature Infinity 3 and 4 pickups for more bite and chunk and balanced string output.



Edge III tremolo design provides even more stability and strength under the most demanding playing conditions.

You deserve better. That's why, whether you're a beginner, on a budget, or a working stiff looking for a good backup axe, you shouldn't settle for some famous name's second line guitar that isn't good enough for them to put their famous name on. Ibanez GRG guitars feature the same set-up standards as our most expensive instruments. Which explains why we proudly put the name "Ibanez" (not "by Ibanez") on the headstock.



### GRG170DX BKN

- GRG1 neck
- Basswood body
- Medium frets
- Fat 10 bridge
- STD-H1 (H) neck pu
- STD-S4 (S) mid pu
- STD-H2 (H) bridge pu
- color : BKN, CA, JB



### GRG170DX JB

- GRG1 neck
- Basswood body
- Medium frets
- Fat 10 bridge
- STD-H1 (H) neck pu
- STD-S4 (S) mid pu
- STD-H2 (H) bridge pu
- color : BKN, CA, JB



### GRG170DX CA

- GRG1 neck
- Basswood body
- Medium frets
- Fat 10 bridge
- STD-H1 (H) neck pu
- STD-S4 (S) mid pu
- STD-H2 (H) bridge pu
- color : BKN, CA, JB

### GRX20 JB

- GRG1 neck
- Basswood body
- Medium frets
- FAT6 bridge
- STD-H1 (H) neck pu
- STD-H2 (H) bridge pu
- color : BKN, JB
- Also available left-handed in BKN finish



The original RG's offered double-locking devastation only. But many metal adherents demanded the simplicity of a fixed bridge. Which we were only happy to oblige.



### RGT42FX BK

- 3pc Wizard II Maple/Walnut neck-thru
- Mahogany body
- Jumbo frets
- Fixed bridge
- INF1 (H) neck pu
- INF2 (H) bridge pu
- color : BK

## The Basics

- The world's premier metal axe—with the simplicity and sustain of a fixed bridge.
- Pickup and pickup placement provide hard-edge tones that cut through anything and anybody.
- 24-fret thin, fast and flat Wizard II necks.



### RG321MH GN

- 3pc Wizard II neck
- Mahogany body
- Jumbo frets
- Fixed bridge
- INF3 (H) neck pu
- INF4 (H) bridge pu
- color : GN, MDL



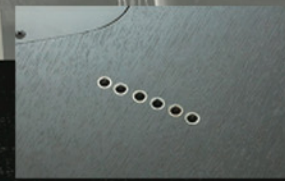
### RG321MH MOL

- 3pc Wizard II neck
- Mahogany body
- Jumbo frets
- Fixed bridge
- INF3 (H) neck pu
- INF4 (H) bridge pu
- color : GN, MDL



### RG7321 BK

- 3pc Wizard II-7 Maple/Walnut neck
- Basswood body
- Jumbo frets
- 7-string standard bridge
- AH7-1 (H) neck pu
- AH7-2 (H) bridge pu
- color : BK



Fixed bridge with thru-body stringing provides tighter string tension, simplicity and increased sustain.



# S



### S2170FW NTF

- 5pc Wizard II Maple /Bubinga neck
- Figured Poplar top
- Selected Mahogany body
- Jumbo frets
- ZR Tremolo bridge
- DiMarzio® IBZ (H) neck pu
- DiMarzio® IBZ (S) mid pu
- DiMarzio® IBZ (H) bridge pu
- color : NTF



### S2170FB NTF

- 5pc Wizard II Maple /Bubinga neck
- Figured Bubinga top
- Selected Mahogany body
- Jumbo frets
- ZR Tremolo bridge
- DiMarzio® IBZ (H) neck pu
- DiMarzio® IBZ (S) mid pu
- DiMarzio® IBZ (H) bridge pu
- color : NTF



DiMarzio® IBZ pickups on S2170FW

Our sleek S was a revolt against the traditional mahogany guitars of its time that were usually heavy, bulky and uncomfortable. Obviously it was a successful revolt as the S is celebrating its 20th Anniversary with a wider selection of models than ever. Originally the S was designed as an all-round guitar. Now, however, the S now finds its largest number of adherents among the practitioners of the more extreme forms of metal who appreciate the S for its unique combination of fat mahogany tone and sustain with light weight and comfort.

## The bAsics

- Heavy mahogany tone without the heavy mahogany weight.
- Thin around the edges for comfort. Fat around the pickups and bridge for tone.
- Back by rapid demand, the S 7-string returns.
- S Prestige model features U.S.A.-made DiMarzio® pickups, 5pc neck with Prestige finishing for increased playing comfort, Gotoh® precision machines and deluxe Prestige case.



### S620EXQM TGB

- 3pc Wizard II neck
- Quilted Maple top /Mahogany body
- Jumbo frets
- ZR Tremolo bridge
- Designed by EMG® (H) neck pu
- Designed by EMG® (H) bridge pu
- color : TGB



### S470DXQM RVK

- 3pc Wizard II neck
- Quilted Maple top /Mahogany Body
- Jumbo frets
- ZR Tremolo bridge
- INF1 (H) neck pu
- INF1 (S) mid pu
- INF2 (H) bridge pu
- color : RVK, BLB



### S470DXQM BLB

- 3pc Wizard II neck
- Quilted Maple top /Mahogany Body
- Jumbo frets
- ZR Tremolo bridge
- INF1 (H) neck pu
- INF1 (S) mid pu
- INF2 (H) bridge pu
- color : RVK, BLB



### S520EX BK

- 3pc Wizard II neck
- Mahogany body
- Jumbo frets
- ZR Tremolo bridge
- INF1 (H) neck pu
- INF2 (H) bridge pu
- color : BK



### S320 WK

- 3pc Wizard II neck
- Mahogany body
- Jumbo frets
- ZR Tremolo bridge
- INF1 (H) neck pu
- INF2 (H) bridge pu
- color : WK



### S7320 BK

- 3pc Wizard II-7 neck
- Mahogany body
- Jumbo frets
- ZR-7 Tremolo bridge
- AH7-1 (H) neck pu
- AH7-2 (H) bridge pu
- color : BK



Sleek and comfortable S320 body.



IBZ INF pickups on S320.



S 7 string S7320 features the ZR-7 bridge.

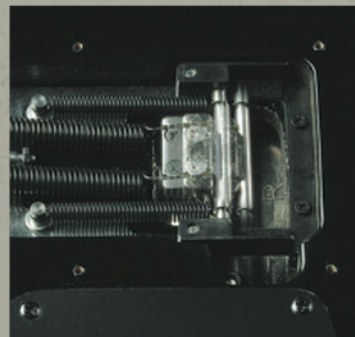
# ZERO RESISTANCE tremolo

## ZR tremolo (Zero Resistance)



The ZR tremolo with the ZPS successfully addresses the inherent drawbacks in traditional locking trem systems. Thanks to the unique ball-bearing mechanism, action and feel are incredibly smooth. The Zero Point System consistently returns the tremolo to the center position (zero point). This system offers ease of tuning, tuning stability and the ability to keep playing even after a string is broken.

## ZPS (Zero Point System)



No friction points make the ZPS the smoothest Ibanez Back Stop ever. An additional outer pair of springs provides easier tuning and better tuning stability than the traditional floating tremolo—plus the other strings will remain in tune if a string breaks.

The ZR tremolo may be the most significant advance in locking tremolos since the first locking tremolo. Most floating tremolos use a knife-edge system, but the ZR tremolo uses a ball-bearing based system for precision and friction-free smooth action.



### Ball-Bearing Pivot

Smoother than smooth. The ZR tremolo's ball-bearing pivot system allows ultra-smooth arm control. The pivot's precision movement virtually guarantees tuning stability. In the floating position, you can really feel the exceptional smoothness and durability of this significant advance in tremolo technology. U.S.PAT No.6710,235

### Intonation Adjustment Tool

Just unscrew the built-in intonation adjustment tool from the base and screw it into the bottom of each saddle for quick adjustments. U.S.PAT No.6,867,354



### Arm Torque and Height Adjustment

Arm torque is easily tightened or loosened by turning the arm-holder adjustment screw. The arm height can be adjusted by spinning the arm clockwise or counterclockwise. No matter what the setting, the arm always feels secure. U.S.PAT PENDING

### Manually Adjustable Spring System

Spring tension can be quickly set by thumb. There's no need for a hex wrench.



### Switchable To Floating Trem

One of the best ZPS features! Just remove the stop bar and the ZPS easily changes to floating trem operation.

# SZ

The powerful SZ is a relatively recent offshoot of the Ibanez S family. Like the S, the SZ is mahogany and sized perfectly for performance. But the SZ is thicker for even more screaming fat mahogany tone and its 25.1" has a different feel than the 25.5" scale of the S. And if the SZ is ever so slightly heavier in weight, its shaped contours make up for any difference with a physical comfort that's almost obscene.



### SZ4020FM NTF

- 5pc SZ Maple
- Walnut neck-thru *Prestige*
- Flamed Maple
- Selected Mahogany body
- Large frets
- Gibraltar Custom bridge
- Quik Change III tailpiece
- Seymour Duncan® IBZ (H) neck pu
- Seymour Duncan® IBZ (H) bridge pu
- color : NTF



### SZ320EX BK

- 3pc Mahogany SZ set-in neck
- Mahogany body
- Large frets
- Gibraltar III bridge
- Duncan®/Ibanez (H) neck pu
- Duncan®/Ibanez (H) bridge pu
- color : BK, WH



### SZ320EX WH

- 3pc Mahogany SZ set-in neck
- Mahogany body
- Large frets
- Gibraltar III bridge
- Duncan®/Ibanez (H) neck pu
- Duncan®/Ibanez (H) bridge pu
- color : BK, WH



### SZ2202EX BKF

- 5pc SZ Maple
- Walnut set-in *Prestige*
- Maple/Selected Mahogany body
- Large frets
- Gibraltar Custom bridge
- Quik Change III tailpiece
- EMG® 85 (H) neck pu
- EMG® 81 (H) bridge pu
- color : BKF

## The bASics

- Fat and full mahogany tone.
- Set-in necks for more sustain and comfort.
- SZ Prestige model features U.S.A.-made pickups, 5pc neck with Prestige finishing for increased playing comfort, Gotoh® precision machines and deluxe Prestige case.
- Graduated string post heights and thru-body stringing provide equalized string tension and precise articulation and great playing feel in SZ300 and 500 series models.
- Affordable GSZ bolt-neck models offer SZ neck scale and body style with the same set-up.



### SZ520QM VCB

- 3pc Mahogany SZ set-in neck
- Quilted Maple top on Maple
- Mahogany body
- Large frets
- Gibraltar III bridge
- Duncan®/Ibanez (H) neck pu
- Duncan®/Ibanez (H) bridge pu
- color : LBT, VCB



### SZ520QM LBT

- 3pc Mahogany SZ set-in neck
- Quilted Maple top on Maple
- Mahogany body
- Large frets
- Gibraltar III bridge
- Duncan®/Ibanez (H) neck pu
- Duncan®/Ibanez (H) bridge pu
- color : LBT, VCB



### SZ720FM BBS

- 3pc Mahogany SZ set-in neck
- Flamed Maple top on Maple/Mahogany body
- Large frets
- Gibraltar III bridge
- Duncan®/Ibanez (H) neck pu
- Duncan®/Ibanez (H) bridge pu
- color : BBS, DAS, TG



### SZ720FM DAS

- 3pc Mahogany SZ set-in neck
- Flamed Maple top on Maple/Mahogany body
- Large frets
- Gibraltar III bridge
- Duncan®/Ibanez (H) neck pu
- Duncan®/Ibanez (H) bridge pu
- color : BBS, DAS, TG



### SZ720FM TG

- 3pc Mahogany SZ set-in neck
- Flamed Maple top on Maple/Mahogany body
- Large frets
- Gibraltar III bridge
- Duncan®/Ibanez (H) neck pu
- Duncan®/Ibanez (H) bridge pu
- color : BBS, DAS, TG



### GSZ120 CA

- GSZ neck
- Basswood body
- Medium frets
- Full Tune III bridge
- Quik Change III tailpiece
- STD-H1 (H) neck pu
- STD-H2 (H) neck pu
- color : BKN, CA



Neck-Thru on SZ4020FM



Seymour Duncan® IBZ pickups on SZ4020FM.



EMG® 81 (bridge) and 85 (neck) pickups on SZ2202EX.



Special 12th fret inlay on SZ2202EX.



White pinstripe binding on SZ320EX.



SZ standard models feature Duncan® Ibanez pickups (alnico magnet neck pickup/ceramic magnet bridge pickup) specially designed by Seymour Duncan® and Ibanez for the SZ.

# X



### XPT700 RCM

- 5pc Wizard II Maple/Walnut neck-thru
- Mahogany body
- Jumbo fret
- Edge III bridge
- DiMarzio™ D Activator™ (H) neck pu
- DiMarzio™ D Activator™ (H) bridge pu
- color : RCM

Ever since the Iceman outraged the more musically conservative among us, Ibanez has been possessed by the urge to create radical body shapes. In 2007, we've got more than ever before with new and different forms of the X designs as well as new shapes and colors not of this earth.

## The Basics

- The new "Xiphos" XPT700 model features all-new Ibanez X-shape with neck thru construction powered by DiMarzio's D Activator™ pickups.
- Arondite ADD, ADC and ADX models offer the classic combination of mahogany body, set-in neck and humbucking pickups at way below the expected bucks.



### ADC120 BK

- Mahogany AD set-in neck
- Maple top on Mahogany body
- Medium frets
- Gibraltar III bridge
- VK1 (H) neck pu
- VK2 (H) bridge pu
- color : BK



### ADX120 BK

- Mahogany AD set-in neck
- Maple top on Mahogany body
- Medium frets
- Gibraltar III bridge
- VK1 (H) neck pu
- VK2 (H) bridge pu
- color : BK

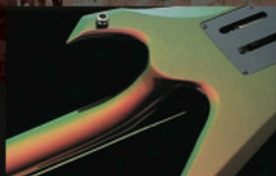


### ADD120 MG

- Mahogany AD set-in neck
- Maple top on Mahogany body
- Medium frets
- Gibraltar III bridge
- VK1 (H) neck pu
- VK2 (H) bridge pu
- color : MG



"Chameleon" finish on XPT700.



Neck-thru construction on XPT700 model provides massive sustain and easy playability.



XPT model is equipped with DiMarzio™ D Activator™ pickups.



ADC/ADD/ADX models feature a set-in neck for fatter tones and increased playability.



VK pickups mounted on ADC/ADD/ADX models feature alnico V bar polepieces, which provide high output, yet offer clarity in the high end.



Body binding on ADX120.



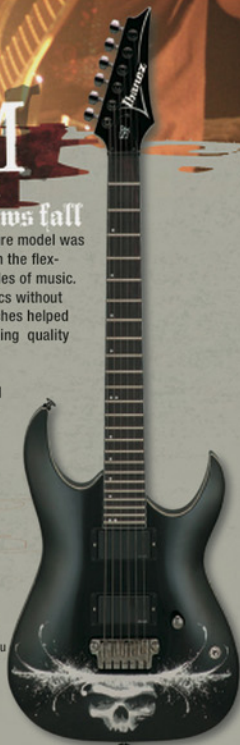
# MBM

matt bachand  
shadows fall

"My main focus of my signature model was to obtain maximum tone with the flexibility to be applied to all styles of music. Stripping it down to the basics without all the extra knobs and switches helped me obtain that, as well as using quality materials to withstand the punishing touring lifestyle. Razor tight rhythm tones and full bodied clean tones from the EMG pickups make it the ideal choice for a rock and metal guitar."

## MBM1 BK

- 5pc Wizard Maple /Walnut neck *Prestige*
- Mahogany body
- Jumbo frets
- Gibraltar Plus bridge
- EMG® 60 (H) neck pu
- EMG® 81 (H) bridge pu
- color : BK



## The Basics

- Arched top and Wizard neck with Prestige finishing for supreme comfort.
- Massive Gibraltar Plus fixed bridge allows wide range of intonation adjustment needed for heavy strings.
- Gotoh® precision machines.
- Includes deluxe Prestige case.

## MTM1 BR

- 5pc Wizard II Maple /Walnut neck-thru
- Mahogany body
- Jumbo frets
- Fixed Edge bridge
- EMG® 60 (H) neck pu
- EMG® 81 (H) bridge pu
- color : BR



## MTM2 BK

- 5pc Wizard II Maple /Walnut neck
- Mahogany body
- Jumbo frets
- Fixed Edge III bridge
- V7 (H) neck pu
- V8 (H) bridge pu
- color : BK



## The Basics

- Designed with Mick Thomson specifically for heavy rock and metal.
- Mick Thomson's choice of U.S.A.-made original EMG® pickups in the MTM1.
- Fixed Edge bridge offers double-locking stability with fixed bridge simplicity and sustain.
- Factory equipped with heavy strings tuned to D# tuning with a dropped B : (low to high) B-A-B-E-B'-E'.
- 5pc thru-neck and mahogany body pump out full, fat tone with strong sustain.
- New MTM2 offers the Mick Thomson signature design in a powerful, more affordable package.

# mTm

mick thomson  
slipknot

"The combination of mahogany, maple, and rosewood with a massive fixed-bridge and EMG pickups make the MTM1 sound absolutely huge. The MTM2 is likely the biggest sounding bolt-on guitar you can find. It's based on the same principals as my custom stage guitars: mahogany, maple and a very dense fixed bridge to make chords huge and sustain seemingly forever. The IBZ pickups have rich harmonics and the gain required to handle both crushing and singing."

## APEX1 BBK

- 5pc APEX Maple /Wenge neck *Prestige*
- Mahogany body
- Jumbo frets
- Edge Pro 7 bridge w/U-bar
- DiMarzio® Paf 7® (H) neck pu
- DiMarzio® Paf 7® (H) bridge pu
- color : BBK



## The Basics

- Ibanez has more experience with solid-body 7-strings than any other guitar maker.
- U.S.A. made DiMarzio® PAF-7 pickups designed specifically for the extended 7-string range.
- The right bridge and nut spacing is why Ibanez 7-string guitar necks feel like guitar necks—not like bats. Transition from 6- to 7-string playing techniques is effortless.
- APEX features D-A-F-C-G-D-A factory-tuning (from 1st to 7th) for Korn's signature low-end crunch.
- Unique U-Bar designed by Munky allows palming the bridge to get tremolo effects without palming the fine tuners. Attached to the Ibanez Edge Pro, the U-Bar System can be removed and replaced with a standard arm.

# munky korn APEX

"After years of touring, I finally found a guitar worthy of becoming my main guitar. Now this guitar is available to everybody as the APEX1 Custom. The APEX2 Standard is a simpler version, but with the same wide tonal range and the durability you need to withstand the rigors of the road."

## APEX2 GSF

- 5pc Wizard II-7 Maple /Walnut neck
- Mahogany body
- Jumbo frets
- Tone Pros® 7 bridge
- DiMarzio® Paf 7® (H) neck pu
- DiMarzio® Paf 7® (H) bridge pu
- color : GSF



# JS Joe satriani

"I wanted a guitar with a modern sound, but with a vintage feel, with smaller frets and more radius on the fingerboard. It had to be subtle enough to catch nuances, fast and easy to play."

## THE bASICS

- Multi-radius Prestige neck (JS1000/JS1200) is an exact digital rendering of the neck on Joe's favorite axe.
- Lightweight aerofoil shaped basswood body provides comfort, upper fret access and expressive singing tones.
- High pass filter on JS1000 and JS1200 volume pots maintains highs at low volumes.
- Combination of 25.5" inch neck scale and DiMarzio® or Ibanez Axis pickups provides wide dynamic range and versatility.



### JS1000 BP

- 1pc JS neck *2x50*
- Basswood body
- W/6105 frets
- Edge Pro bridge
- DiMarzio® Paf Pro® (H) neck pu
- DiMarzio® Fred® (H) bridge pu
- color : BP



### JS1200 CA

- 1pc JS neck *2x50*
- Basswood body
- W/6105 frets
- Edge Pro bridge
- DiMarzio® Paf Joe® (H) neck pu
- DiMarzio® Fred® (H) bridge pu
- color : CA



### JS100 BK

- JS neck
- Basswood body
- Large frets
- Edge III bridge
- IBZ AH1 (H) neck pu
- IBZ AH2 (H) bridge pu
- color : BK, TR



### JS100 TR

- JS neck
- Basswood body
- Large frets
- Edge III bridge
- IBZ AH1 (H) neck pu
- IBZ AH2 (H) bridge pu
- color : BK, TR

## THE bASICS

- Contoured basswood or alder bodies with 24-fret Prestige JEM neck provides easy access to all registers.
- Deep routed tremolo cavities allow pitches to be lowered or raised.
- Vai's choice of specific DiMarzio® pickups for each model and combined with Ibanez Split-5 wiring provide incredible tonal versatility.
- Steve Vai's Universe—the guitar that ignited 7-string revolution—allows almost effortless transition from 6- to 7-string techniques.



### JEM77V BK

- 5pc JEM Maple/Walnut neck *2x50*
- Basswood body
- W/6105 frets
- Edge Pro bridge
- DiMarzio® Breed™ (H) neck pu
- DiMarzio® Breed™ (S) mid pu
- DiMarzio® Breed™ (H) bridge pu
- color : BK



### JEM7V WH

- 5pc JEM Maple/Walnut neck *2x50*
- Alder body
- W/6105 frets
- Edge Pro bridge
- DiMarzio® Evolution® (H) neck pu
- DiMarzio® Evolution® (S) mid pu
- DiMarzio® Evolution® (H) bridge pu
- color : WH



### UV777P BK

- 5pc UV Maple/Wenge neck *2x50*
- American Basswood body
- Jumbo frets
- Edge Pro 7 bridge
- DiMarzio® Blaze II® (H) neck pu
- DiMarzio® Blaze II® (S) mid pu
- DiMarzio® Blaze II® (H) bridge pu
- color : BK



### JEM555 BK

- 3pc JEM neck
- American Basswood body
- Jumbo frets
- Edge III bridge
- DiMarzio® Evolution® (H) neck pu
- DiMarzio® Evolution® (S) mid pu
- DiMarzio® Evolution® (H) bridge pu
- color : BK, WH



### JEM555 WH

- 3pc JEM neck
- American Basswood body
- Jumbo frets
- Edge III bridge
- DiMarzio® Evolution® (H) neck pu
- DiMarzio® Evolution® (S) mid pu
- DiMarzio® Evolution® (H) bridge pu
- color : BK, WH

# JEM/UV Steve vai

"This guitar is so slick, you can hurt yourself if you're not careful."





## PGM

paul gilbert

"When I pick up any other brand of guitar I have to think of so many things...the volume knob is wrong; the frets are too small...the body pokes me in the ribs. These are things I don't worry about with my Ibanez."

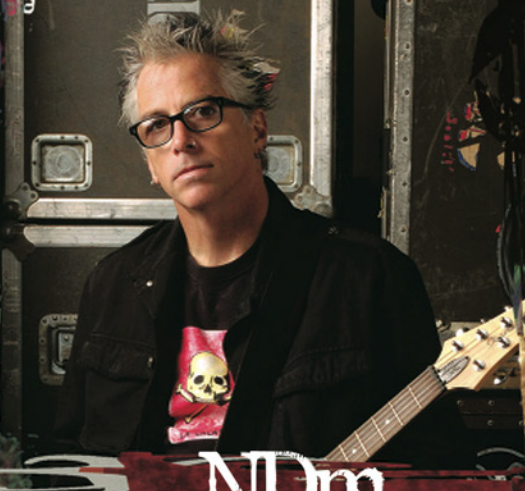
### The basics

- Fixed bridge offers increased sustain and simplicity.
- Paul's specific choice of different DiMarzio® pickups, HSH configuration and 5-way switching offers the multitude of tones required for his mastery of both speed and style.
- And, of course, Paul Gilbert's signature painted f-holes.



#### PGM301 WH

- 5pc PGM Maple/Walnut neck *Beatsize*
- Basswood body
- Jumbo frets
- Fixed bridge
- DiMarzio® Paf Pro® (H) neck pu
- DiMarzio® Jem Single (S) mid pu
- DiMarzio® Paf Pro® (H) bridge pu
- color : WH



## NDM

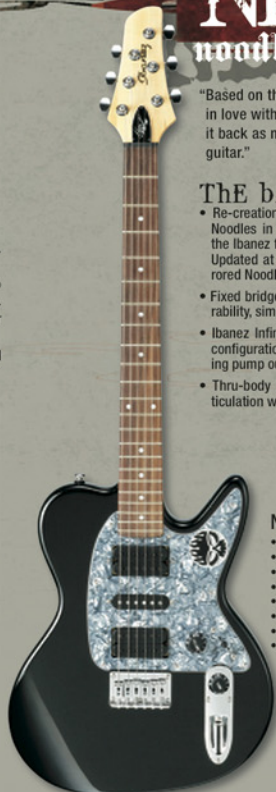
noodles

the offspring

"Based on the first Ibanez guitar I fell in love with. I'm glad Ibanez brought it back as my new signature model guitar."

### The basics

- Re-creation of the first guitar made for Noodles in 1994 which brought him into the Ibanez fold and became his main axe. Updated at this request with special mirrored Noodles symbol on the pickguard.
- Fixed bridge with steel saddles offers durability, simplicity and strong sustain.
- Ibanez Infinity pickups in hum-sing-hum configuration and Special 5-Way switching pump out a vast assortment of tones.
- Thru-body stringing offers improved articulation with greater sustain.



#### NDM2 BK

- 3pc NDM neck
- Basswood body
- Large frets
- Fixed bridge
- IBZ INF1 (H) neck pu
- IBZ INF1 (S) mid pu
- IBZ INF2 (H) bridge pu
- color : BK



## AT

andy timmons

"I require a lot of sonic variety for my guitar, and the AT300 delivers."

### The basics

- Delivers the sonic variety needed by a player who is equal parts bluesmaster, ultra versatile sessionmeister and speed demon.
- Arched S-style top with traditional flat back.
- AT multi-radius neck offers incomparable playability and feel.
- DiMarzio® Cruiser DP186 single-coil pickups with DiMarzio® AT1 made specifically for Andy Timmons (an Ibanez exclusive).
- Sperzel® locking tuners and Wilkinson® by Gotoh® VSVG Tremolo.



#### AT300 AV

- 1pc AT neck *Beatsize*
- Mahogany body
- Jumbo frets
- Wilkinson® by Gotoh® VSVG bridge
- DiMarzio® Cruiser® neck pu
- DiMarzio® Cruiser® mid pu
- DiMarzio® AT1 Custom bridge pu
- color : AV



## mMM

mike mushok

staind  
"I get better tuning and articulation with fuller tone than I could ever achieve with a standard guitar, no matter what I play."

### The basics

- Matte finished mahogany body and thru-neck provide gargantuan tone and sustain.
- 28" scale baritone neck offers the ability to achieve all kinds of low tunings. Factory tuning is B'-F'-D'-A'-E'-B' (from 1st to 6th).
- Super 58 pickups custom-wound for baritone.
- Tuning machines feature low string posts for higher tension off the nut.
- Thru-body stringing augments the MMM1's strong sustain and superior articulation.
- Massive Gibraltar Custom bridge, allows radical intonation adjustments and augments the MMM1's great sustain.



#### MMM1 MOL

- 3pc MMM Mahogany
- Purple wood neck-thru
- Mahogany wing body
- Jumbo frets
- Gibraltar Custom bridge
- Super 58 Custom (H) neck pu
- Super 58 Custom (H) bridge pu
- color : MOL

For over 30 years, the classic Artist design has provided a real, high quality alternative to "the other famous mahogany double humbucker." The more recent ARC, ARX and the new 2007 ART single cutaway offer more modern variations on the set-neck theme at unprecedented low prices.

## The bASics

- Set-neck construction, superior hardware and warm mahogany tones.
- Ibanez brand name quality with a nearly no-name price tag.

### ARC500 NT

- 1pc ARC Mahogany set-in neck
- Quilted Maple top/Mahogany body
- Medium frets
- Gibraltar III bridge
- Quik Change Ultra tailpiece
- Super 58 Custom neck pu
- Super 58 Custom bridge pu
- color : NT

### ARX500 AMB

- 1pc ARX Mahogany set-in neck
- Quilted Maple top/Mahogany body
- Medium frets
- Gibraltar III bridge
- Quik Change Classic tailpiece
- Super 58 Custom neck pu
- Super 58 Custom bridge pu
- color : AMB

### ARC300 DVS

- ARC Mahogany set-in neck
- Flamed Maple top/Mahogany body
- Medium frets
- Gibraltar III bridge
- Quik Change Ultra tailpiece
- ACH1 (H) neck pu
- ACH2 (H) bridge pu
- color : DVS

### ARC100 BK

- ARC Mahogany set-in neck
- Maple top/Mahogany body
- Medium frets
- Gibraltar III bridge
- Quik Change Ultra tailpiece
- ACH1 (H) neck pu
- ACH2 (H) bridge pu
- color : BK

### ARX120 BK

- ARX Mahogany set-in neck
- Maple top/Mahogany body
- Medium frets
- Gibraltar III bridge
- Quik Change III tailpiece
- ACH1-S (H) neck pu
- ACH2-S (H) bridge pu
- color : BK

### ARX320 MS

- ARX Mahogany set-in neck
- Quilted Maple top /Mahogany body
- Medium frets
- Gibraltar III bridge
- Quik Change III tailpiece
- ACH1-S (H) neck pu
- ACH2-S (H) bridge pu
- color : MS

### ART100 BK

- ART Mahogany set-in neck
- Maple top/Mahogany body
- Medium frets
- Gibraltar III bridge
- Quik Change III tailpiece
- ACH1-S (H) neck pu
- ACH2-S (H) bridge pu
- color : BK



Special fretboard inlay on ARC500/ARX500.



ARC500/ARX500 Artist Custom models feature a smooth neck heel for playing comfort and increased accessibility to the higher frets.



Wood binding on ARC500/ARX500.



Quik Change Ultra tailpiece on the ARC features traditional looks but provides untraditionally quick and accurate fine-tuning adjustments.



Quilted maple top on ARX320.



Arched tops with recessed knobs give the Artist models pro appearance and playing comfort at near generic pricing.



Suffering from too much of too much? Maybe you need a return to the rock and roll basics. Ibanez GAX guitars offer no-frills, raw rock simplicity: two humbuckers, a 3-way switch and double-cutaway, crystal cut body—all at simple money.

## The Basics

• High output humbuckers, high quality construction and low prices—all with the Ibanez brand name and sound.



### GAX30 BKN

- GAX1 neck
- Basswood body
- Medium frets
- Fixed bridge
- STD-H1 (H) neck pu
- STD-H2 (H) bridge pu
- color : BKN, JB, TR

### GAX30 JB

- GAX1 neck
- Basswood body
- Medium frets
- Fixed bridge
- STD-H1 (H) neck pu
- STD-H2 (H) bridge pu
- color : BKN, JB, TR

### GAX30 TR

- GAX1 neck
- Basswood body
- Medium frets
- Fixed bridge
- STD-H1 (H) neck pu
- STD-H2 (H) bridge pu
- color : BKN, JB, TR

Noting like a blast from the past. As long as its got modern tweaks, appointments and consistency

## The Basics

- The AR300 is one of the first Ibanez original designs, the affordable double-cutaway alternative to the other famous mahogany double-humbucker.
- The set-neck Iceman with its mahogany/humbucker power is the most easily identifiable radical guitar shape—from any distance.
- We've modified our funky pawnshop inspired Jet King by switching out the original humbucker with a high-out exposed polepiece humbucker for stronger leads. Think '50s Greaser guitar with '70s hotrodding.



### JTK2 BK

- 3pc JTK2 neck
- Mahogany body
- Medium frets
- Full Tune III bridge
- Super 58 (H) neck pu
- AH2 (H) bridge pu
- color : BK, RD

### JTK2 RD

- 3pc JTK2 neck
- Mahogany body
- Medium frets
- Full Tune III bridge
- Super 58 (H) neck pu
- AH2 (H) bridge pu
- color : BK, RD

### IC400 BK

- 3pc IC set-in neck
- Mahogany body
- Medium frets
- Full tune III bridge
- Quik Change III tailpiece
- AH1 (H) neck pu
- Super 58 (H) bridge pu
- color : BK

### AR300 BS

- 3pc AR set-in neck
- Flamed Maple top on Maple
- Mahogany body
- Large frets
- Full tune III bridge
- Quik Change Classic tailpiece
- Super 58 (H) neck pu
- Super 58 (H) bridge pu
- color : BS



Retro rocker switches on the JTK2 offer vintage looks but have modern coil splitting capability.



The Quik Change Classic tailpiece on the AR300 features a sustain plate and a three-screw design that eliminates the back and forth movement inherent in traditional two-screw units.



IC400BK set-in neck.

# SA



### SAS36FM DRS

- 3pc SAS set-in neck
- Flamed Maple top
- Mahogany body
- Medium frets
- SAT Pro bridge
- AHS1 (S) neck pu
- AHS2 (S) mid pu
- True Duo Buckler (H) bridge pu
- color : DRS, TG



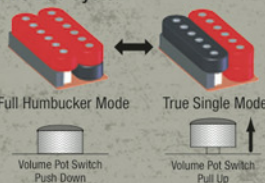
### SAS36FM TG

- 3pc SAS set-in neck
- Flamed Maple top
- Mahogany body
- Medium frets
- SAT Pro bridge
- AHS1 (S) neck pu
- AHS2 (S) mid pu
- True Duo Buckler (H) bridge pu
- color : DRS, TG

### SA2160FM HS

- 5pc SAS2 Maple/Bubinga set-in neck *Patent Pending*
- Flamed Maple/Selected Mahogany body
- Jumbo frets
- SAT Pro bridge
- DiMarzio® IBZ (S) neck pu
- DiMarzio® IBZ (S) mid pu
- DiMarzio® IBZ True Duo Buckler (H) bridge pu
- color : HS

### True Duo System

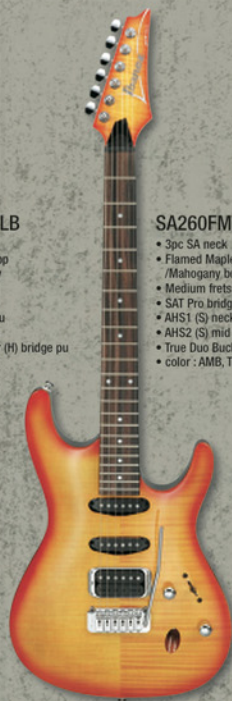


SA2160FM Prestige model features DiMarzio® IBZ pickup with the True Duo system.



### SA260FM TLB

- 3pc SA neck
- Flamed Maple top
- Mahogany body
- Medium frets
- SAT Pro bridge
- AHS1 (S) neck pu
- AHS2 (S) mid pu
- True Duo Buckler (H) bridge pu
- color : AMB, TLB



### SA260FM AMB

- 3pc SA neck
- Flamed Maple top
- Mahogany body
- Medium frets
- SAT Pro bridge
- AHS1 (S) neck pu
- AHS2 (S) mid pu
- True Duo Buckler (H) bridge pu
- color : AMB, TLB



True Duo humbucker. Original Ibanez design (Patent pending) triple-coil construction (one single with one stacked) makes Ibanez the first to achieve switching between genuine single-coil and humbucking tone in one pickup.



### SA220FM TGB

- 3pc SA neck
- Flamed Maple top
- Mahogany body
- Medium frets
- SAT Pro bridge
- AH1 (H) neck pu
- True Duo Buckler (H) bridge pu
- color : TGB



SAS set-in neck features strong 3pc construction and special neck finish for extraordinary comfort and playability.

One of the most popular designs in Ibanez history, the SA was designed for players who wanted the S combination of lightweight comfort with heavy mahogany tones—but with a flat back. It's also one of the most versatile designs. If you've need to cover a wide range of styles and tones with just one guitar, this is the one guitar.

## The Basics

- Comfortable S shape, size and arched top with a standard flat back.
- Combination of mahogany, SAT tremolo and true single and true humbucking tones offers incredible versatility.
- SA2160FM Prestige also features the first U.S.A. made True Duo humbucker, 5pc Prestige neck with special finish for increased playability, Gotoh precision machines and Prestige case.
- Affordable GSA models feature the SA body shape, hi-output pickups, and the same set-up as our most expensive models.

# SA & GSA



## SA120 BK

- 3pc SA neck
- Mahogany body
- Medium frets
- SAT Pro bridge
- AH5 (H) neck pu
- AH6 (H) bridge pu
- color : BK, CN



## SA120 CN

- 3pc SA neck
- Mahogany body
- Medium frets
- SAT Pro bridge
- AH5 (H) neck pu
- AH6 (H) bridge pu
- color : BK, CN



## GSA60 JB

- GSA neck
- Agathis body
- Medium frets
- SAT10 bridge
- PSNDS (S) neck pu
- PSNDS (S) mid pu
- PSND2 (H) bridge pu
- color : BKN, JB, WH



## GSA60 WH

- GSA neck
- Agathis body
- Medium frets
- SAT10 bridge
- PSNDS (S) neck pu
- PSNDS (S) mid pu
- PSND2 (H) bridge pu
- color : BKN, JB, WH



SAT Pro tremolo bridge and metal PU rings on SA120.



#### AF125 NT

- 5pc Artcore Maple /Bubinga set-in neck
- Quilted Maple top/back/sides
- Medium frets
- ART-1 bridge
- VT04 Custom tailpiece
- Super 58 Custom neck pu
- Super 58 Custom bridge pu
- depth: 70mm at tail
- color: NT

#### AF105 NT

- 5pc Artcore Maple /Bubinga set-in neck
- Flamed Maple top /back/sides
- Medium frets
- ART-1 bridge
- VT04 Custom tailpiece
- Super 58 Custom neck pu
- Super 58 Custom bridge pu
- depth: 70mm at tail
- color: NT

#### AF105F NT

- 5pc Artcore Maple /Bubinga set-in neck
- Flamed Maple top /back/sides
- Medium frets
- ART-1 bridge
- VT04 Custom tailpiece
- Custom-F neck pu
- depth: 70mm at tail
- color: NT

## THE BASICS

Players, music store owners and music industry press were stunned by the debut of the affordable Artcores in 2002. Which still didn't prepare them for the unveiling of the Artcore Customs in 2005, truly exquisite guitars that offer patrician specs and tones at pebeian prices. The question "How do you do it?" is literally still being asked.

#### AWD102 NT

- 5pc Artcore Maple /Bubinga set-in neck
- Flamed Maple top/back/sides
- Medium frets
- ART-1 bridge
- Quik Change Ultra tailpiece
- Super 58 Custom neck pu
- Super 58 Custom bridge pu
- depth: 43mm at tail
- color: NT

#### AS103 NT

- 5pc Artcore Maple /Bubinga set-in neck
- Flamed Maple top/back/sides
- Medium frets
- ART-1 bridge
- Quik Change Ultra tailpiece
- Super 58 Custom neck pu
- Super 58 Custom bridge pu
- depth: 43mm at tail
- color: NT

# ARTCORE CUSTOM



Floating Pickups are utilized on the AF105F to eliminate feedback.



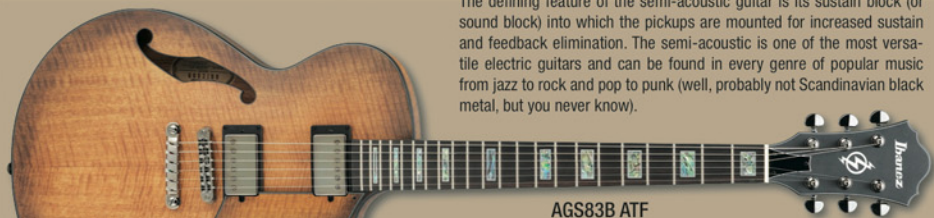
Artcore Custom models feature 5pc maple/bubinga neck for extra strength and stability.



Quik Change Ultra tailpiece on AS103 and AWD102 features traditional looks but provides untraditionally quick and accurate fine-tuning adjustments.

## THE BASICS

The defining feature of the semi-acoustic guitar is its sustain block (or sound block) into which the pickups are mounted for increased sustain and feedback elimination. The semi-acoustic is one of the most versatile electric guitars and can be found in every genre of popular music from jazz to rock and pop to punk (well, probably not Scandinavian black metal, but you never know).



### AGS83B ATF

- 3pc Artcore Mahogany /Maple set-in neck
- Flamed Sycamore top/back/sides
- Medium frets
- ART-1 bridge
- Quik Change III tailpiece
- ACH1 (H) neck pu
- ACH2 (H) bridge pu
- depth: 43mm at tail
- color : ATF, TKF



### AGS83B TKF

- 3pc Artcore Mahogany /Maple set-in neck
- Flamed Sycamore top/back/sides
- Medium frets
- ART-1 bridge
- Quik Change III tailpiece
- ACH1 (H) neck pu
- ACH2 (H) bridge pu
- depth: 43mm at tail
- color : ATF, TKF



### AWD83T TRD

- 3pc Artcore Mahogany/Maple set-in neck
- Figured Bubinga top/Maple back & sides
- Medium frets
- ACT tremolo
- ACH1 (H) neck pu
- ACH2 (H) bridge pu
- depth: 43mm at tail
- color : TRD



The first knife-edge tremolo designed for semi-acoustic guitar. The ACT eliminates the tremolo cavity on the back of the guitar—there's less space used so there's more tone. Shorter springs use less vibrating room and contribute to a stiffer arm response. Two ways to install the springs offer choice in string and arm tension. And on top of all that the ACT is smooth to the touch and string changes are easy.

The super-thin AGS83B features a 17-fret to the body joint and an extra-deep cutaway that makes it the right choice for players who want to spend more time—with ease and comfort—in the upper regions.



### AWD83 TBL

- 3pc Artcore Mahogany /Maple set-in neck
- Figured Bubinga top /Maple back & sides
- Medium frets
- Short Stop III bridge
- ACH1 (H) neck pu
- ACH2 (H) bridge pu
- depth: 43mm at tail
- color : TBL



### AFS75TD SV

- Artcore Mahogany set-in neck
- Maple top/back/sides
- Medium frets
- ART-2 Roller bridge
- VBF70 tremolo
- ACH1 (H) neck pu
- ACH2 (H) bridge pu
- depth: 43mm at tail
- color : SV



### AFS75T TBL

- Artcore Mahogany set-in neck
- Maple top/back/sides
- Medium frets
- ART-2 Roller bridge
- VBF70 tremolo
- ACH1 (H) neck pu
- ACH2 (H) bridge pu
- depth: 43mm at tail
- color : TBL, TRD



### AFS75T TRD

- Artcore Mahogany set-in neck
- Maple top/back/sides
- Medium frets
- ART-2 Roller bridge
- VBF70 tremolo
- ACH1 (H) neck pu
- ACH2 (H) bridge pu
- depth: 43mm at tail
- color : TBL, TRD

\*VBF 70 Vintage Vibro design licensed by Fred W. Gustin Enterprises, Ltd. in the U.S.

# ARTCORE



Exquisite Artcore Deluxe inlay utilizes an acrylic block with abalone lines.

The Short Stop III bridge on the AWD83 provides superior playability with a smooth surface and easy string changing.



#### AF95 VLS

- 3pc Artcore Mahogany /Maple set-in neck
- Flamed Sycamore top/back/sides
- Medium frets
- ART-1 bridge
- VT100DX tailpiece
- ACH1 (H) neck pu
- ACH2 (H) bridge pu
- depth: 70mm at tail
- color : VLS



#### AF75D TOR

- Artcore Mahogany set-in neck
- Maple top/back/sides
- Medium frets
- ART-1 bridge
- VT50 tailpiece
- ACH1 (H) neck pu
- ACH2 (H) bridge pu
- depth: 70mm at tail
- color :TOR



#### AF75 BS

- Artcore Mahogany set-in neck
- Maple top/back/sides
- Medium frets
- ART-1 bridge
- VT50 tailpiece
- ACH1 (H) neck pu
- ACH2 (H) bridge pu
- depth: 70mm at tail
- color : BS

# ARTCORE

## THE BASICS

Artcore provides the traditional jazz, rockabilly player and country picker with a vast selection of full-acoustics in both deluxe and standard models. Unlike many so-called "full-acoustics" which feature soundblocks in the body, Ibanez full-acoustic guitars are completely full-hollow for the rich, complex tones you can only get from a true, full-hollow guitar.



#### AK95 DVS

- 3pc Artcore Mahogany /Maple set-in neck
- Spruce top/Sycamore back & sides
- Medium frets
- ART-W wooden bridge
- VT100DX tailpiece
- ACH1 (H) neck pu
- ACH2 (H) bridge pu
- depth: 70mm at tail
- color : DVS



#### AG95 TRD

- 3pc Artcore Mahogany /Maple set-in neck
- Figured Bubinga top/back/sides
- Medium frets
- ART-1 bridge
- VT100DX tailpiece
- ACH1 (H) neck pu
- ACH2 (H) bridge pu
- depth: 70mm at tail
- color : TRD



#### AG75 BS

- Artcore Mahogany set-in neck
- Maple top/back/sides
- Medium frets
- ART-1 bridge
- VT50 tailpiece
- ACH1 (H) neck pu
- ACH2 (H) bridge pu
- depth: 70mm at tail
- color : BS



Artcore Deluxe models feature a wood tailpiece decorated in gold.

# ARTCORE



## AS93 VLS

- 3pc Artcore Mahogany /Maple set-in neck
- Flamed Sycamore top /back/sides
- Medium frets
- ART-1 bridge
- Quik Change III tailpiece
- ACH1 (H) neck pu
- ACH2 (H) bridge pu
- depth: 43mm at tail
- color : VLS



## AS73 TCR

- Artcore Mahogany set-in neck
- Maple top/back/sides
- Medium frets
- ART-1 bridge
- Quik Change III tailpiece
- ACH1 (H) neck pu
- ACH2 (H) bridge pu
- depth: 43mm at tail
- color : BS, TCR



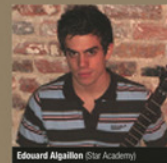
## AS73 BS

- Artcore Mahogany set-in neck
- Maple top/back/sides
- Medium frets
- ART-1 bridge
- Quik Change III tailpiece
- ACH1 (H) neck pu
- ACH2 (H) bridge pu
- depth: 43mm at tail
- color : BS, TCR



## AM73 TBR

- Artcore Mahogany set-in neck
- Maple top/back/sides
- Medium frets
- ART-1 bridge
- Quik Change III tailpiece
- ACH1 (H) neck pu
- ACH2 (H) bridge pu
- depth: 43mm at tail
- color : TBR



Edouard Aigallon (Star Academy)



Fabián Arzavales (Korfeión)



Yann Armellino



Cristóbal Arriagada (Pepe y Shu Power Carfite)



Javier Bassino (Fahrenheit)



Honza Kirk Behunek (SEVEN)



Ricky Belloni (New Trill)



Luis H. Bettencourt



Gizz Buff (The More I See)



Rudi Buttas (Pu)



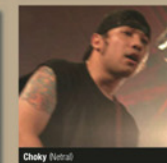
Dan Carter (The Lucky Nine)



Cesario Elio e le Storie Tese



Pop Wariv (Charonnapachal (RUC2RUC))



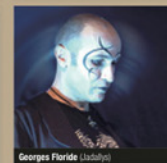
Chuky (Ntral)



Alex Colin-Tocquaine (Agressor / Loudblast)



Claudio Cordero (Matra)



Georges Floride (Ladanya)



Robbie Furze (PANC DHH)



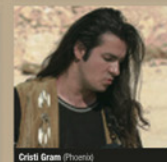
Per Gade (Billy Colzham/Arb Moreira)



Fabien Galland (Lilix Zerott)



Roland Gebhardt (Pu Gebhardt's Bow)



Crist Gram (Phoenix)



Tony Haglund



Kristian Hermansson



Tony G. Hernandez



Gabriel Hidalgo (Six Magica)



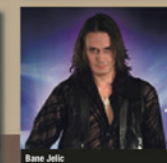
Wojciech Hoffmann (Turba)



Trond "Teeny" Holter (Wig Wani)



Jimmy Jansson



Kane Jelic



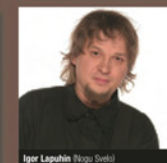
Ildar Kazhanov



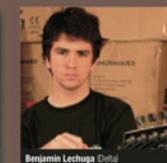
Wladimir Khoryzi (Budz?)



Nikolay Kotov



Igor Lapuhin (Vigo Svetl)



Benjamin Lechuga (Delta)



#### GB10 BS

- GB neck *Beatsign*
- Spruce top/Maple back/sides
- Medium frets
- Ebony bridge
- GB special (H) neck pu
- GB special (H) bridge pu
- depth: 65mm at tail
- color : BS, NT



#### GB10 NT

- GB neck *Beatsign*
- Spruce top/Maple back/sides
- Medium frets
- Ebony bridge
- GB special (H) neck pu
- GB special (H) bridge pu
- depth: 65mm at tail
- color : BS, NT



#### GB200 BST

- GB neck *Beatsign*
- Spruce top/Maple back/sides
- Medium frets
- Ebony bridge
- Super 58 (H) neck pu
- Super 58 (H) bridge pu
- depth: 80mm at tail
- color : BST

## GEORGE BENSON

"The GB10's smaller body doesn't have a lot of resonance, but it has a lot of articulation. The notes don't melt together like on softer guitars. It maintains the tone while articulating each note. No other guitar gets that sound."

### THE BASICS

- The GB10 debuted in the U.S.A. in Chicago on June 11, 1977. Our longest running artist signature model.
- For 2006, George Benson has ordained the new GB15TR, his first signature model to feature coil-tapping, which allows to add single-coil tone to the array of GB colors.
- Floating pickups, a thicker top and a smaller body reject feedback.
- Pure jazz tone even at rock and roll volumes
- GB200 features full-sized, full-acoustic body and standard pickup installation for more traditional jazz gigs.

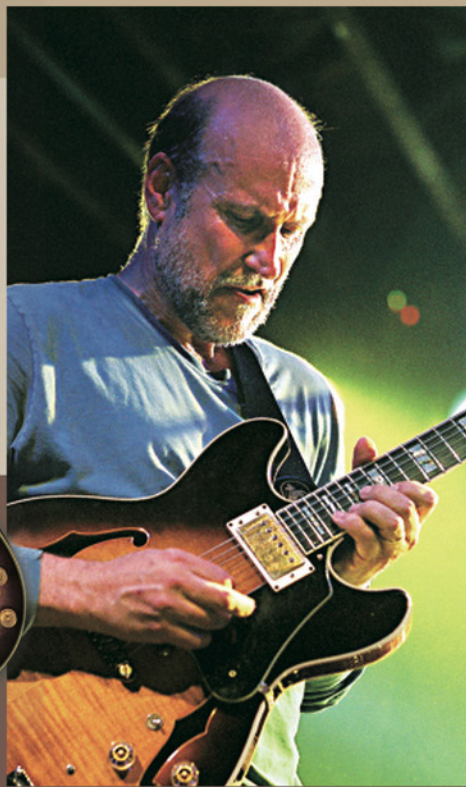
#### GB15 TR

- GB15 neck *Beatsign*
- Spruce top /Maple back/sides
- Medium frets
- Ebony bridge
- GB special (H) neck pu
- depth: 65mm at tail
- color : TR



#### JSM100 VT

- JSM neck *Beatsign*
- Flamed maple top /Maple back/sides
- Jumbo frets
- Gotoh® 510BN bridge
- Super 58 (H) neck pu
- Super 58 (H) bridge pu
- depth: 43mm at tail
- color : VT



## JOHN SCOFIELD

"When Ibanez wanted to reintroduce my original AS200 guitar with the original specs they had to fly me to the Ibanez R&D facility in L.A., where detailed measurements were taken of every conceivable dimension. This became the basis for the JSM John Scofield Model, which reproduced the original guitar plus added some improvements such as a side-mounted jack."

### THE BASICS

- Rigid top and body reject feedback.
- Sco's preference of Artist-style "castle" headstock to complement AS body for better tonal balance.
- Classic '80s Ibanez half-brass, half-bone nut.

## PAT METHENY



"It took some time, several prototypes and perseverance from all corners, but the final results are excellent! I love playing all of the various Ibanez PM models and am quite proud to be associated with them."

### THE BASICS

- Like the artist himself, the PM models are able to play within and without the boundaries of traditional jazz.
- The size of the traditional jazz guitar but slimmer for better comfort, projection, and feedback rejection.
- Double cutaway and 17th fret body joint offers easier upper fret access than completely traditional jazz boxes.
- The PM120 features an even slimmer body than the PM100 (2" vs. 3") for enhanced midrange punch.



#### PM120 NT

- PM neck *Beatsign*
- Maple top/back/sides
- Medium frets
- Gotoh® 103B bridge
- Silent 58 (H) neck pu
- Silent 58 (H) bridge pu
- depth: 50mm at tail
- color : BK, NT



#### PM100 BK

- PM neck *Beatsign*
- Maple top/back/sides
- Medium frets
- Gotoh® 103B bridge
- Super 58 (H) neck pu
- depth: 80mm at tail
- color : BK





# THE BASS REV OLU TION

SR

# SR Prestige

## SR1000EFM NTF

- 5pc SR4 Maple /Bubinga neck-thru *Bestgrip*
- Flamed Maple/Maple wing body
- Medium frets
- MR-4 bridge (19mm string spacing)
- Bartolini® Custom neck pu
- Bartolini® Custom bridge pu
- Vari-Mid III HQ 3-band eq
- Elixir® string
- color : NTF



2007 marks a major milestone: The 20th Anniversary of the revolutionary Soundgear bass. Premium woods, Prestige thru-necks, Bartolini® electronics provide our Prestige Soundgears with even more sophistication and versatility than the famous originals. But the core Soundgear philosophy is exactly the same as two decades ago: a modern bass for players who want a thin, fast neck and the ability to dial in any tone for any genre from complex electric jazz to raging black metal.

## THE BASICS

- .. Thin yet super-strong 5pc thru-necks for better upper fret access, stability and sustain.
- .. Models with maple back and flamed maple wings for players favoring more high-end emphasis; mahogany back and walnut wings for those desiring warmer tones.
- .. Ibanez Vari-Mid EQ for full bass tones and exceptional versatility.
- .. Gotoh® precision machines.
- .. Includes deluxe Prestige case.



## SR1000EWN NTF

- 5pc SR4 Maple/ Bubinga neck-thru *Bestgrip*
- Walnut/Mahogany wing body
- Medium frets
- MR-4 bridge (19mm string spacing)
- Bartolini® Custom neck pu
- Bartolini® Custom bridge pu
- Vari-Mid III HQ 3-band eq
- Elixir® string
- color : NTF



Prestige basses feature U.S.A.-made Bartolini® pickups designed specifically for Ibanez basses, and the Ibanez Vari-Mid EQ, which features sweepable midrange for wide variations in tone.

## SR1005EFM NTF

- 5pc SR5 Maple /Bubinga neck-thru *Bestgrip*
- Flamed Maple/Maple wing body
- Medium frets
- MR-4 bridge (16.5mm string spacing)
- Bartolini® Custom neck pu
- Bartolini® Custom bridge pu
- Vari-Mid III HQ 3-band eq
- Elixir® string
- color : NTF



## SR1005EWN NTF

- 5pc SR5 Maple /Bubinga neck-thru *Bestgrip*
- Walnut/Mahogany wing body
- Medium frets
- MR-4 bridge (16.5mm string spacing)
- Bartolini® Custom neck pu
- Bartolini® Custom bridge pu
- Vari-Mid III HQ 3-band eq
- Elixir® string
- color : NTF



## SR1006EFM NTF

- 5pc SR6 Maple /Bubinga neck-thru *Bestgrip*
- Flamed Maple/Maple wing body
- Medium frets
- MR-4 bridge (16.5mm string spacing)
- Bartolini® Custom neck pu
- Bartolini® Custom bridge pu
- Vari-Mid III HQ 3-band eq
- Elixir® string
- color : NTF



Gotoh® Machineheads



The fourth generation Mono-Rail design still features complete string-to-string isolation so each string vibrates true without interference from the others. However, the Mono-Rail 4 also features a special saddle lock for maximized individual string isolation and vibration as well as even easier string changes.



Sleek body contours provide unparalleled playing comfort on even the longest gigs.

# SR

## SR 4 string

Since 1987, trends have come and gone. But the fast and versatile Soundgear basses continue to lay down the groove in every style imaginable in every venue possible. Now in 2007 Ibanez offers a vast array of different Soundgear models including neck-thru-body and left-handed.

The modern Soundgear narrow neck is perfect for 5- and 6-strings so extended range travel is as physically comfortable as it is musically exhilarating.



### SR900 ANF

- 5pc SR4 Maple /Bubinga neck-thru
- Figured Maple wing body
- Medium frets
- Accu-Cast B20 bridge (19mm string spacing)
- Bartolini® MK1 neck pu
- Bartolini® MK1 bridge pu
- Bartolini® MK1 3-band eq
- Elixir® string
- color : ANF, TKF



### SR900 TKF

- 5pc SR4 Maple /Bubinga neck-thru
- Figured Maple wing body
- Medium frets
- Accu-Cast B20 bridge (19mm string spacing)
- Bartolini® MK1 neck pu
- Bartolini® MK1 bridge pu
- Bartolini® MK1 3-band eq
- Elixir® string
- color : ANF, TKF



### SR500 BM

- 5pc SR4 Wenge/Bubinga neck
- Mahogany body
- Medium frets
- Accu-Cast B20 bridge (19mm string spacing)
- Bartolini® MK1 neck pu
- Bartolini® MK1 bridge pu
- Bartolini® MK1 3-band eq
- Elixir® string
- color : BM



### SR300FM TKS

- 3pc SR4 neck
- Flamed Maple top /Agathis body
- Medium frets
- B100 bridge (19mm string spacing)
- DXP neck pu
- DXJ bridge pu
- EOB-1IC 2-band eq
- color : DVS, TKS, TRS



### SR300FM TRS

- 3pc SR4 neck
- Flamed Maple top /Agathis body
- Medium frets
- B100 bridge (19mm string spacing)
- DXP neck pu
- DXJ bridge pu
- EOB-1IC 2-band eq
- color : DVS, TKS, TRS

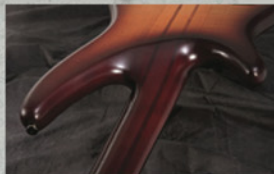


### SR300FM DVS

- 3pc SR4 neck
- Flamed Maple top /Agathis body
- Medium frets
- B100 bridge (19mm string spacing)
- DXP neck pu
- DXJ bridge pu
- EOB-1IC 2-band eq
- color : DVS, TKS, TRS



Sleek body contours provide unparalleled playing comfort on even the longest gigs.



Maple/Bubinga neck-thru construction on the SR900 adds strength and sustain.



Bartolini® MK-1 pickups and EQ featured on SR900s.



"Three-dimensional" shape enhances the comfort and looks of the SR500.



Bartolini® MK-1 pickups and EQ featured on SR500s.



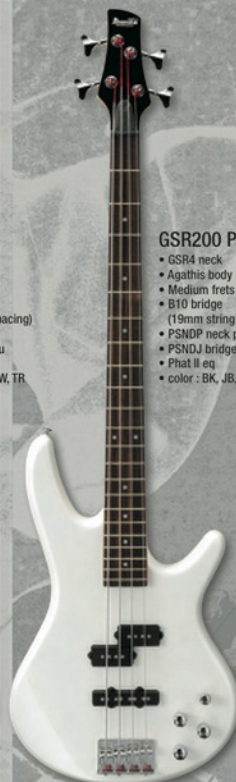
SR500s' 5pc Wenge/Bubinga neck construction combines exceptional strength and stability with extraordinary playability.

**GSR200 JB**

- GSR4 neck
- Agathis body
- Medium frets
- B10 bridge (19mm string spacing)
- PSNDP neck pu
- PSNDJ bridge pu
- Phat II eq
- color : BK, JB, PW, TR

**GSR200 TR**

- GSR4 neck
- Agathis body
- Medium frets
- B10 bridge (19mm string spacing)
- PSNDP neck pu
- PSNDJ bridge pu
- Phat II eq
- color : BK, JB, PW, TR

**GSR200 PW**

- GSR4 neck
- Agathis body
- Medium frets
- B10 bridge (19mm string spacing)
- PSNDP neck pu
- PSNDJ bridge pu
- Phat II eq
- color : BK, JB, PW, TR

**GSR100 BKN**

- GSR4 neck
- Nato body
- Medium frets
- B10 bridge (19mm string spacing)
- Standard P neck pu
- color : BKN, JB, SV

**GSR100 SV**

- GSR4 neck
- Nato body
- Medium frets
- B10 bridge (19mm string spacing)
- Standard P neck pu
- color : BKN, JB, SV

**THE BASICS**

∴ Thinner necks with thinner nuts than traditional basses.

∴ Lightweight, balanced, comfort-contoured bodies

∴ Active EQ's perfectly matched with the right choice of pickups. (GSR200s)

∴ GSR models with high output pickups offer famous Soundgear pro comfort and playability at "entry-level" prices.

**GSR200FM TBS**

- GSR4 neck
- Flamed Maple top/Basswood body
- Medium frets
- B10 bridge (19mm string spacing)
- STD-P2 neck pu
- STD-J2 bridge pu
- Phat eq
- color : TBS, TFB

**GSR200FM TFB**

- GSR4 neck
- Flamed Maple top/Basswood body
- Medium frets
- B10 bridge (19mm string spacing)
- STD-P2 neck pu
- STD-J2 bridge pu
- Phat eq
- color : TBS, TFB

**GSR200FML TKS**

- GSR4 neck
- Flamed Maple top/Basswood body
- Medium frets
- B10 bridge (19mm string spacing)
- STD-P2 neck pu
- STD-J2 bridge pu
- Phat eq
- color : TKS

**SR905 CNF**

- 5pc SRS Maple/Bubinga neck-thru
- Figured Maple Wing Body
- Medium frets
- Accu-Cast B25 bridge (16.5mm string spacing)
- Bartolini® MK1 neck pu
- Bartolini® MK1 bridge pu
- Bartolini® MK1 3-band eq
- Elixir® string
- color : CNF

**SR505 BM**

- 5pc SRS Wenge/Bubinga neck
- Mahogany body
- Medium frets
- Accu-Cast B25 bridge (16.5mm string spacing)
- Bartolini® MK1 neck pu
- Bartolini® MK1 bridge pu
- Bartolini® MK1 3-band eq
- Elixir® string
- color : BM

**SR506 BM**

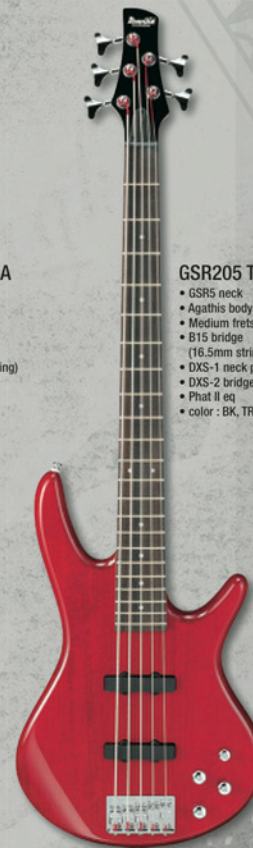
- 5pc SR6 Wenge/Bubinga neck
- Mahogany body
- Medium frets
- B106 bridge (16.5mm string spacing)
- Bartolini® MK1 neck pu
- Bartolini® MK1 bridge pu
- Bartolini® MK1 3-band eq
- Elixir® string
- color : BM

**SR305FM TKS**

- 3pc SRS neck
- Flamed Maple top
- Agathis body
- Medium frets
- B105 bridge (16.5mm string spacing)
- DX-N5 neck pu
- DX-B5 bridge pu
- EOB-IIC 2-band eq
- color : TKS

**GSR205FM TDA**

- GSR5 neck
- Flamed Maple top
- Basswood body
- Medium frets
- B15 bridge (16.5mm string spacing)
- STD-J51 neck pu
- STD-J52 bridge pu
- Phat II eq
- color : TDA

**GSR205 TR**

- GSR5 neck
- Agathis body
- Medium frets
- B15 bridge (16.5mm string spacing)
- DXS-1 neck pu
- DXS-2 bridge pu
- Phat II eq
- color : BK, TR

**GSR205 BK**

- GSR5 neck
- Agathis body
- Medium frets
- B15 bridge (16.5mm string spacing)
- DXS-1 neck pu
- DXS-2 bridge pu
- Phat II eq
- color : BK, TR



Phat II active bass boost easily adds extra low-end power to the affordable GSR200 models.

We could say that the Soundgear SRX is the Soundgear SR's simpler and even more muscular younger sibling. But a better explanation of what SRX can do for you is this: Soundgear Extreme is the only bass in the world that can count both metal minions and bass icon/hitmaker Carol Kaye in its court. If a bass is so exceptional it can satisfy players that different, what could the SRX do for you?



### SRX590 TGF

- 3pc SRX4 neck
- Flamed Maple top/Basswood body
- Medium frets
- Accu-Cast B200 bridge (19mm string spacing)
- PFR-N4 neck pu
- PFR-B4 bridge pu
- EQB-II DX 2-band eq
- Elixir® string
- color : TGF



### SRX595 TGF

- 3pc SRX5 neck
- Flamed Maple top /Basswood body
- Medium frets
- Accu-Cast B205 bridge (18mm string spacing)
- PFR-N5 neck pu
- PFR-B5 bridge pu
- EQB-II DX 2-band eq
- Elixir® string
- color : TGF



### SRX390 TKF

- SRX4 neck
- Basswood body
- Medium frets
- B100 bridge (19mm string spacing)
- PFR-N4 neck pu
- PFR-B4 bridge pu
- EQB-II DX 2-band eq
- color : TKF



Black pearloid binding on SRX590/595.



### SRX350 NT

- SRX4 neck
- Ash body
- Medium frets
- B100 bridge (19mm string spacing)
- PFR-N4 neck pu
- PFR-B4 bridge pu
- EQB-II DX 2-band eq
- color : NT



### SRX355 NT

- SRX5 neck
- Ash body
- Medium frets
- B105 bridge (16.5mm string spacing)
- PFR-N5 neck pu
- PFR-B5 bridge pu
- EQB-II DX 2-band eq
- color : NT



### SRX300 SLB

- SRX4 neck
- Agathis body
- Medium frets
- B100 bridge (19mm string spacing)
- PFR-N4 neck pu
- PFR-B4 bridge pu
- EQB-II DX 2-band eq
- color : IPT, SLB



### SRX300 IPT

- SRX4 neck
- Agathis body
- Medium frets
- B100 bridge (19mm string spacing)
- PFR-N4 neck pu
- PFR-B4 bridge pu
- EQB-II DX 2-band eq
- color : IPT, SLB

## THE BASICS

∴ The original Soundgear fast neck, and comfortable body shape.

∴ Extra powerful Passive Full Range pickups with exposed pole pieces offer extreme high output.

∴ 2-band EQ let you play more bass (and less controls).

# ATK

Not everyone needs a sleek, narrow necked bass like the Soundgear. Which is why we first came out in 1995 with the ATK (short for "attack," the aggressive ATK's defining characteristic). Unlike the Soundgear, the ATK is big—with the big, bold tones you get from a traditional big neck and big body. But the ATK is no one-trick trad workhorse. It's also versatile and comfortable thanks to its unique electronics and physical layout. In other words, the right choice for blues, hard rock, country players and anyone else who wants every single plus of a traditional bass and more.



### ATK300 NT

- 3pc ATK4 Maple neck
- Light Ash body
- Jumbo frets
- Maple fretboard
- ATK4 bridge
- ATK Triple coil pu
- ATK 3-band eq
- Elixir® string
- color : BK, NT, TFB



### ATK300 BK

- 3pc ATK4 Maple neck
- Light Ash body
- Jumbo frets
- Maple fretboard
- ATK4 bridge
- ATK Triple coil pu
- ATK 3-band eq
- Elixir® string
- color : BK, NT, TFB



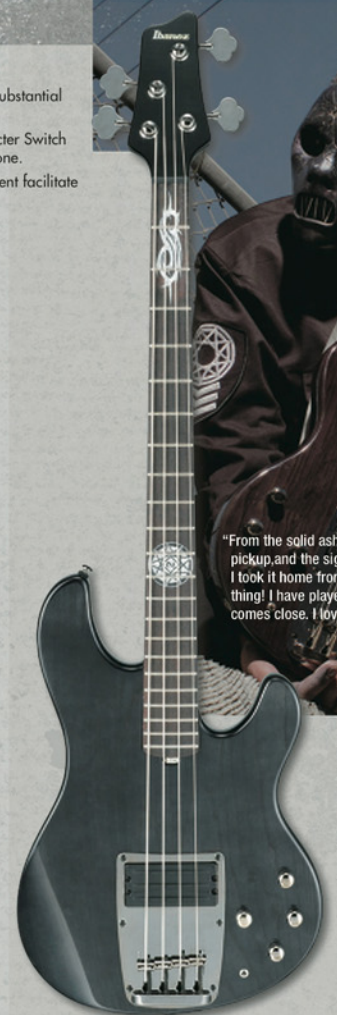
### ATK300 TFB

- 3pc ATK4 Maple neck
- Light Ash body
- Jumbo frets
- Maple fretboard
- ATK4 bridge
- ATK Triple coil pu
- ATK 3-band eq
- Elixir® string
- color : BK, NT, TFB



### ATK305 NT

- 3pc ATK5 Maple neck
- Light Ash body
- Jumbo frets
- Maple fretboard
- ATK5 bridge
- ATK Triple coil pu
- ATK 3-band eq
- Elixir® string
- color : NT



### PGB1 TK

- 5pc PGB1 Maple/Walnut neck
- Swamp Ash body
- Jumbo frets
- ATK4 bridge
- ATK triple coil pu
- ATK 3-band eq
- Factory tuning : 1D, 2A, 3E, 4B
- color : TK
- Also available left-handed



With the ingenious ATK bridge, you have the option to string through-the-body for increased low end and more sustain, or through-the-bridge for slightly more high end and attack.

ATK's round, comfortable neck.

ATK's innovative triple coil pickup and active 3-band EQ allow you to dial in anything ranging from earthquake lows to skull-splitting highs.

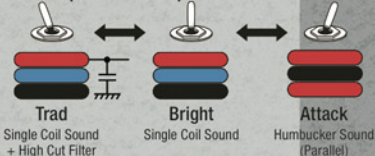
## THE BASICS

- .. Big five-bolt All Access Maple Neck and substantial body provide huge tones.
- .. Unique triple coil pickup and Tone Character Switch offer easy rapid and radical changes in tone.
- .. Well-designed pickup and control placement facilitate easy slapping and popping.

"From the solid ash body, to the sick tones of the ATK triple coil pickup, and the signature Slipknot inlay, the bass is amazing! I took it home from the factory and didn't have to change a thing! I have played it every single day and nothing else even comes close. I love it!"

**Paul Gray**  
Slipknot

### ATK Triple Coil Pickup





**Mike D'Antonio**  
Killswitch Engage

"I wanted to base my signature model after one of my favorite basses: the SRX700. My only requirement was that it needed to look even tougher and more metal (than your ma's kettle). The MDB has a simplified control layout I prefer, the great SRX pickups, and a customized graphic I designed. The bass is HUGE sounding, comfortable to play, and looks killer. What more could you want?"

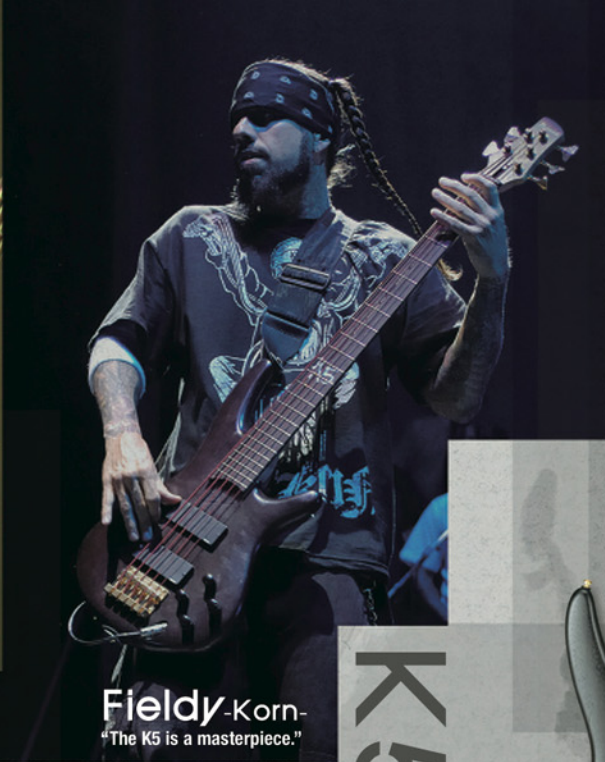
### MDB1 BKF

- 5pc MDB1 Maple/Walnut neck-thru
- Swamp Ash wing body
- Medium frets
- Accu-Cast B200 bridge (19mm string spacing)
- PFR-ALN4 neck pu
- PFR-ALB4 bridge pu
- Active 1-volume control
- Factory tuning: 1F, 2C, 3G, 4C
- color: BKF



### THE BASICS

- .. Mike D'Antonio's simple control layout. One volume control with all tone controls set internally to mid-point.
- .. Factory-tuned to Mike drop-C tuning.
- .. Standout Medusa snake graphic by Mike D'Antonio.
- .. Special beveled edges on the upper and lower horns.
- .. Super high-output Passive Full Range pickups with exposed pole pieces provide awesome levels of output.



**Fieldy Korn**  
"The K5 is a masterpiece."

### THE BASICS

- .. Lightweight hardware allows for more active performance—and pumps out the tremendous low-end and sustain needed for Korn's brand of heavy rock. Powerful ADX active pickups.
- .. Original Vari-Mid EQ sweepable midrange allows you to dial in or dial out any kind of bass sound (or as Fieldy says, "Take the midrange and turn that \$%#@\$ off").

# K5



### K5 TKF

- 5pc K5 Maple/Bubinga neck
- Mahogany body
- Medium frets
- Die-Cast EB-7 bridge (16.5mm string spacing)
- ADX5N neck pu
- ADX5B bridge pu
- Vari-Mid III 3-band eq
- Elxii® string
- color: TKF



### GWB1005 NTF

- 3pc GWB5 neck
- Swamp Ash body
- Fretless
- Ebonol fretboard
- STD-5 bridge (16.5mm string spacing)
- Bartolini® GWB pu
- Bartolini® NTBT 2-band eq
- D'Addario® EXP165 string
- color: NTF



### GWB35 BKF

- 3pc GWB5 neck
- Basswood body
- Fretless
- Ebonol fretboard
- B105 bridge (16.5mm string spacing)
- SFR-GWB custom wound pu
- EQB-GWII 2-band eq
- D'Addario® EXP165 string
- color: BKF



### THE BASICS

- .. Gary's Japanese handcrafted GWB1005 model raises the fretless bar.
- .. The GWB35 offers the GW advantages at an affordable price.
- .. Willis-designed fingerrest/ramp refines right-hand technique.
- .. Sure Grip tuning knobs offer fast restringing and precise tuning.
- .. GWB1005 includes deluxe Prestige case.

"It has its own sounds, but it's also transparent; you get sounds out of your hands. When you can dial in an instrument to this level of performance, it's amazing."

**Gary Willis**

# GW/B





### EDB550 WNF

- 5pc EDB4 Wenge/Bubing neck
- Light Ash body
- Medium frets
- B100 bridge (19mm string spacing)
- Duncan®/Ibanez neck pu
- Duncan®/Ibanez bridge pu
- EQB IIX 2-band eq
- Elixir® string
- color : WNF



### EDB555 WNF

- 5pc EDB5 Wenge/Bubing neck
- Light Ash body
- Medium frets
- B105 bridge (16.5mm string spacing)
- Duncan®/Ibanez neck pu
- Duncan®/Ibanez bridge pu
- EQB IIX 2-band eq
- Elixir® string
- color : WNF



Duncan®/Ibanez pickups on EDB550s.

## THE BASICS

- ∴ Ergonomically curved body for playing comfort.
- ∴ Strong, slender two-octave neck.
- ∴ Scooped out top for slapping and popping playing styles.

# EDB

The original Ergodyne EDBs were molded of man-made materials. That way their comfortable three-dimensional shapes could be offered at a reasonable price that wasn't possible in wood at that time. New bass making technologies allow the EDB's player-friendly ergonomic shape to be affordably rendered in ash, maple or basswood for rich organic tones.



### EDB700 TKF

- 3pc EDB4 neck
- Maple body
- Medium frets
- Accu-Cast B20 bridge (19mm string spacing)
- DXH-MN neck pu
- DXH-MB bridge pu
- EQB III 3-band eq
- Elixir® string
- color : TKF

### EDB400 TKF

- EDB4 neck
- Basswood body
- Medium frets
- B10 bridge (19mm string spacing)
- DXH-MN neck pu
- DXH-MB bridge pu
- Phat eq
- color : CNF, TKF



### EDB400 CNF

- EDB4 neck
- Basswood body
- Medium frets
- B10 bridge (19mm string spacing)
- DXH-MN neck pu
- DXH-MB bridge pu
- Phat eq
- color : CNF, TKF

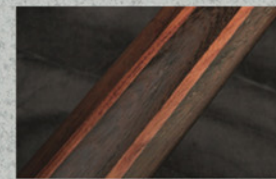


### EDB405 TKF

- EDB5 neck
- Basswood body
- Medium frets
- B15 bridge (16.5mm string spacing)
- DXH-MN neck pu
- DXH-MB bridge pu
- Phat eq
- color : TKF



Scooped-out front for slapping and popping.



EDB550s' 5pc Wenge/Bubing neck construction combines exceptional strength and stability with extraordinary playability.



EDB700 bass has a carved top and back.



### BTB1205E NTF

- 5pc BTB5 Maple/Walnut neck-thru *Prestige*
- Flamed Maple top/Mahogany /Maple back wing body
- Medium frets
- MR-4 bridge (19mm string spacing)
- Bartolini® Custom neck pu
- Bartolini® Custom bridge pu
- Bartolini® Custom 3-band eq
- Elixir® string
- color : NTF



Maple/walnut 5pc neck-thru on BTB Prestige models accentuates the exceptional power, sustain and playability of the BTB design.

# BTB

All the top shelf materials, commanding tones and great feel of an extremely expensive boutique bass—without the extremely expensive pricing. The BTB takes the traditional formula of powerful tones produced by a massive body and substantial neck and then adds an even longer 35" inch scale neck, the right mix of select woods and high-tech appointments. The BTB's unique off-center line neck shape, which follows the natural path of the thumb as it moves up the neck, makes upper fretwork as easy as playing the lower frets.

### BTB1206E NTF

- 5pc BTB6 Maple/Walnut neck-thru *Prestige*
- Flamed Maple top/Mahogany /Maple back wing body
- Medium frets
- MR-4 bridge (17mm string spacing)
- Bartolini® Custom neck pu
- Bartolini® Custom bridge pu
- Bartolini® Custom 3-band eq
- Elixir® string
- color : NTF

## THE BASICS

.. 35" neck scale provides superior articulation. Perfect for low tuning and on 5- and 6-strings where "flopping" can occur on the low B-string with standard neck scales.

.. Hi-tech Neutrik® locking jacks offer secure and stable connection.

.. 18-volt circuitry offers more headroom.

.. Gotoh® Precision Machines (BTB1205E/1206E).

.. Includes Deluxe Prestige Case (BTB1205E/1206E).



Bartolini® pickups provide deep, warm tones while retaining treble emphasis. The Bartolini® active 3-band EQ features fully independent bass treble and mid controls and a mini switch for quick mid-frequency adjustments of 250Hz, 500Hz and 1kHz.



### BTB555MP NTF

- 5pc BTB5 Maple /Walnut neck
- Maple top & back /Mahogany body
- Medium frets
- MR-2 bridge (19mm string spacing)
- Bartolini® MK1 neck pu
- Bartolini® MK1 bridge pu
- Vari-Mid III 3-band eq
- Elixir® string
- color : NTF, WBR



### BTB555MP WBR

- 5pc BTB5 Maple /Walnut neck
- Maple top & back /Mahogany body
- Medium frets
- MR-2 bridge (19mm string spacing)
- Bartolini® MK1 neck pu
- Bartolini® MK1 bridge pu
- Vari-Mid III 3-band eq
- Elixir® string
- color : NTF, WBR



### BTB556MP NTF

- 5pc BTB6 Maple /Walnut neck
- Maple top & back /Mahogany body
- Medium frets
- MR-2 bridge (17mm string spacing)
- Bartolini® MK1 neck pu
- Bartolini® MK1 bridge pu
- Vari-Mid III 3-band eq
- Elixir® string
- color : NTF



Secure high-tech Neutrik® locking jacks are just one of several modern enhancements to the BTB's traditional design.



Bartolini® MK1 pickups featured now on BTB555s.



Maple/mahogany/maple body construction on the BTB555MP retains the warm low-end of mahogany but adds the slightly brighter response of two sections of maple.



### BTB450QM NBS

- 5pc BTB4 Maple /Walnut neck
- Quilted Maple top
- Basswood body
- Medium frets
- MR-2 bridge (19mm string spacing)
- Bartolini® MK1 neck pu
- Bartolini® MK1 bridge pu
- Vari-Mid IIB 3-band eq
- Elixir® string
- color : NBS



### BTB455QM DAA

- 5pc BTB5 Maple /Walnut neck
- Quilted Maple top
- Basswood body
- Medium frets
- MR-2 bridge (19mm string spacing)
- Bartolini® MK1 neck pu
- Bartolini® MK1 bridge pu
- Vari-Mid IIB 3-band eq
- Elixir® string
- color : DAA, TK



### BTB456QM TK

- BTB6 Maple /Walnut neck
- Quilted Maple top
- Basswood body
- Medium frets
- MR-2 bridge (17mm string spacing)
- Bartolini® MK1 neck pu
- Bartolini® MK1 bridge pu
- Vari-Mid IIB 3-band eq
- Elixir® string
- color : TK



### BTB205 TYF

- 3pc BTB5 neck
- Agathis body
- Medium frets
- B105 bridge (16.5mm string spacing)
- DX-N5 neck pu
- DX-B5 bridge pu
- PHAT II eq
- color : TYF



### BTB200 IPF

- 3pc BTB4 neck
- Agathis body
- Medium frets
- B100 bridge (19mm string spacing)
- DX-N4 neck pu
- DX-B4 bridge pu
- PHAT II eq
- color : IPF, VDF



### BTB200 VDF

- 3pc BTB4 neck
- Agathis body
- Medium frets
- B100 bridge (19mm string spacing)
- DX-N4 neck pu
- DX-B4 bridge pu
- PHAT II eq
- color : IPF, VDF



Secure high-tech Neutrik® locking jacks are just one of several modern enhancements to the BTB's traditional design. (BTB400s)



Phat II EQ active bass boost easily dials in extra low-end on the BTB200s. Ibanez DX pickups provide humbucking quiet and power with balanced string output on both 4- and 5-string models.

## RD

If you travel to gigs demanding a multitude of styles and tones—and can carry only one bass on the plane—the Ibanez Roadgear is the bass you should take.

## THE BASICS

- ∴ Neck is thin in the lower frets for fast fretwork, but thicker towards the upper for fatter tone.
- ∴ J/M pickup configuration offers a wealth of tones and plenty of punch.
- ∴ Heavy-duty Accu-Cast B200/B100 bridges provide strong sustain.

## RD500 BBS

- RD4 neck
- Quilted Maple top /Basswood body
- Medium frets
- Accu-Cast B200 bridge (19mm string spacing)
- Duncan® Ibanez neck pu
- Duncan® Ibanez bridge pu
- EQB-II 2-band eq
- Elixir® string
- color : BBS

## RD300 BK

- RD4 neck
- Agathis body
- Medium frets
- B100 bridge (19mm string spacing)
- PSNDJ neck pu
- PSNDM bridge pu
- color : BK



## ICB

The most recognized radical shape in rock simply exudes metallic menace, attitude and fat, mahogany tone.

## THE BASICS

- ∴ Massive mahogany body delivers absolutely huge tones.
- ∴ Ultra loud PFR pickups and active electronics.

## ICB300EX BK

- ICB4 neck
- Mahogany body
- Medium frets
- B100 bridge (19mm string spacing)
- PFR-N4 neck pu (black pole piece)
- PFR-B4 bridge pu (black pole piece)
- EQB-II DX 2-band eq
- Elixir® string
- color : BK



White pinstripe binding on ICB300EX.



# GAXB

It simply doesn't get any simpler. Just one volume and a 3-way switch make it easy for beginners or players in a rush to instantly dial in the right tones.

## THE BASICS

- ∴ 32" scale neck is perfect for students and players who prefer lower tension or a smaller neck.
- ∴ Double-cutaway body offers easy upper fret access.



### GAXB150 BK

- GAXB4 neck
- Nato body
- Medium frets
- B10 bridge (19mm string spacing)
- Dual Coil soapbar neck pu
- 3 way tone character toggle switch
- color : BK

## THE BASICS

- ∴ Set-in necks offer superior sustain than the bolt-on neck models usually found in the price range.
- ∴ 30.3" scale neck is perfect for players who prefer the vintage bass feel.



### AFB200 BS

- 3pc Artcore Bass Mahogany /Maple neck
- Maple top/back/sides
- Medium frets
- Wooden bridge
- FBT40 tailpiece
- ACHB-2 neck pu
- ACHB-2 bridge pu
- depth: 70mm at tail
- color : BS



### AGB200 TBR

- 3pc Artcore Bass Mahogany /Maple neck
- Maple top/back/sides
- Medium frets
- Gibraltar III bass bridge (19mm string spacing)
- Quik Change III bass tailpiece
- ACHB-2 neck pu
- ACHB-2 bridge pu
- depth: 43mm at tail
- color : TBR

# ARTCORE

# JUMP START

Four out of five doctors say that people who play music get more dates, have a lot more fun, and, when you get right down to it, are simply more cool than people who don't play."

Jumpstart bass and guitar packages have "Everything you need to plug in and play."™ So instead of spending time wondering what it would be like to be on stage, you could be looking out at the audience.

\*In entirely imaginary interviews conducted across the United States. But you know it's true. Plus actual studies do show that playing music makes you smarter. That tends to make life easier.



### GRX40J Jumpstart

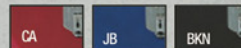
Features GRX electric guitar and Jumpstart Guitar Package Accessories.

#### Amplifier

- 10 watt dedicated guitar amp

#### Package Accessories

- Electronic Tuner
- Gig Bag
- Guitar Strap
- Picks
- Accessories Pouch



### GSR190J Jumpstart

Features GSR electric bass and Jumpstart Bass Package Accessories.

#### Amplifier

- 10 watt dedicated bass amp

#### Package Accessories

- Electronic Tuner
- Gig Bag
- Bass Guitar Strap
- Picks
- Accessories Pouch



# GRG MIKRO

Mikro's 22" inch scale length— (standard guitars feature a neck scale from 24 3/4" to 25 1/2") makes it the right choice for beginner players or pros practicing on the tour bus.

The Mikro is perfect for last minute rehearsals, running scales while waiting for downloads, young rockers just joining the fray or anyone who just wants a smaller neck and body. Not to be confused with other small guitars—Mikro is no toy. Mikro features the same construction, high quality and careful set-up of our full size GRX and GRG models.



### GRGM21GB BKN

- GRGM neck
- Nato body
- Medium frets
- Fixed bridge
- Standard (H) neck pu
- Standard (H) bridge pu
- color : BKN, JB, WH



### GRGM21GB JB

- GRGM neck
- Nato body
- Medium frets
- Fixed bridge
- Standard (H) neck pu
- Standard (H) bridge pu
- color : BKN, JB, WH





#### X Mode/Channel

The X mode/channel emphasizes tighter low end and a unique tonality in the midrange, which increases sustain and harmonics.



#### Gain control on Normal Channel

The TBX features a Gain control on the Normal Channel to offer wider tonal variation ranging from pure clean tones to crunchy overdrive.



#### Parametric MID EQ control

Mid range is a very important aspect in determining the character of an amplifier's sound. The TBX active Parametric Mid control allows you to shape a wide variety of distortion tones and amp sounds. This control also works for the Normal channel on the TBX15, TBX15R and TBX30R.



## Tone Blaster Guitar Amplifiers



#### TBX150H

- output power 150W@4Ω
- speaker unit 8" Ibanez IS804
- controls Normal Channel - Overdrive Switch, Gain, Bass, Middle, Treble, Volume, Reverb Level  
Hot Channel - X Mode Switch, Gain, Bass, Middle Frequency, Middle Level, Treble, Volume, Reverb Level  
Channel Switch  
Hue  
Input, Send, Return, 2 x Speaker Output, Footswitch 1 & 2  
W/Accessory Box  
636 (W) x 259 (H) x 252 (D) mm  
14.1kg
- i/o's
- cabinet
- size
- weight

#### IS412CA / IS412CS

- speaker unit 4 x 12" Ibanez IS1216G
- power handling 320Wrms/640Wmax
- i/o's 2 x Input (4Ω/16Ω)
- cabinet IS412CA : Traditional Angled  
IS412CS : Straight Front Angled
- size 707 (W) x 755 (H) x 334 (D) mm (with casters)
- weight 34kg (with casters)



#### TBX150H Accessory Storage

Allows convenient storage of footswitches, cables or accessories.



#### HUE Control

Adjusts overall tonal character. (TBX150H/150R)



#### IFS4X

Optional latching footswitch with metal housing for use with TBX. (Sold separately)

#### IFS2X

The new generation Tone Blaster X series amps were designed and created to answer the needs of today's guitarist. The parametric mid EQ allows you to dial in any tone you're looking for in an instant. The exclusive X mode allows you to get monstrously heavy and lets you cut through the din of the loudest rhythm section. The gain control in the normal channel can be dialed down to give you anything from a clean jazz tone to a crunchy, slightly overdriven rock'n roll tone. Plug in and express yourself with TBX.



#### TBX15

- output power 15W@4Ω
- speaker unit 8" Ibanez IS804
- controls Normal Channel : Gain, Volume, Channel Switch  
X Channel : Gain, Volume  
EQ : Bass, Middle Frequency  
Middle Level, Treble  
Input, CD/MP3 In, Headphones  
Closed Back Cabinet  
367 (W) x 351 (H) x 201 (D) mm  
7.2kg
- i/o's
- cabinet
- size
- weight



#### TBX15R

- output power 15W@4Ω
- speaker unit 8" Ibanez IS804
- controls Normal Channel : Gain, Volume, Channel Switch  
X Channel : Gain, Volume  
EQ : Bass, Middle Frequency  
Middle Level, Treble, Reverb Level  
Input, CD/MP3 In, Headphones  
Closed Back Cabinet  
367 (W) x 351 (H) x 201 (D) mm  
7.3kg
- i/o's
- cabinet
- size
- weight



#### TBX30R

- output power 30W@8Ω
- speaker unit 10" Ibanez IS1008G
- controls Normal Channel : Gain, Volume, Channel Switch  
X Channel : Gain, Volume  
EQ : Bass, Middle Frequency  
Middle Level, Treble, Reverb Level  
Input, CD/MP3 In, Headphones  
Open Back Cabinet  
440 (W) x 413 (H) x 222 (D) mm  
8.3kg
- i/o's
- cabinet
- size
- weight



#### TBX65R

- output power 65W@4Ω
- speaker unit 12" Ibanez IS1204G
- controls Normal Channel : Overdrive Switch, Gain, Bass, Middle, Treble, Volume, Channel Switch  
Hot Channel : X Mode Switch, Gain, Bass, Middle Frequency, Middle Level, Treble, Volume, Reverb Level  
Input, CD/MP3 In, Footswitch, Headphones  
Closed Back Cabinet  
491 (W) x 451 (H) x 254 (D) mm  
17.7kg
- i/o's
- cabinet
- size
- weight



#### TBX150R

- output power 150W@4Ω
- speaker unit 2 x 12" Ibanez IS1208G
- controls Normal Channel - Overdrive Switch, Gain, Bass, Middle, Treble, Volume, Reverb Level  
Hot Channel - X Mode Switch, Gain, Bass, Middle Frequency, Middle Level, Treble, Volume, Reverb Level  
Channel Switch  
Hue  
Input, Send, Return, Speaker Output, Footswitch 1 & 2  
Closed Back Cabinet  
663 (W) x 500 (H) x 274 (D) mm  
24.5kg
- i/o's
- cabinet
- size
- weight



#### CD / MP3 Player In

Featuring a mixing preamp that allows you to play along with any music source, including CD & MP3 players. (TBX15/15R/30R/65R)



#### IS Speaker driver

Extremely efficient Ibanez IS speaker drivers are voiced for tight and focused low-end for today's modern music styles.

# Thermion

## Guitar Amplifier



TN120

The 120-watt Thermion features only the finest top-shelf, military-grade components...all in the service of a design that considers every aspect of modern playing from tone to transport. But the most important spec is this: Thermion is all-tube. There is absolutely no solid-state circuitry in the signal path. So you've got the tones, power and control you need to conquer every album track, every stage, every city, and ultimately, the entire universe (admittedly, that may take a little time).



1



3



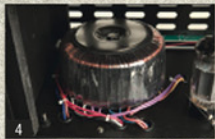
5



7



2



4



6



8

1. Illuminated front panel logo and controls provide full visibility on stage for you—and the audience.

2. Select RUBY Tube® preamp tubes. Tube shields on every pre-amp tube (not utilized on many other professional grade amps) reduce noise.

3. Matched RUBY Tube output tubes are used for optimum performance and stability.

4. "Over-spec'd" high efficiency toroidal power transformer virtually eliminates 50/60Hz hum.

5. Heavy-duty Thermion cabinets feature 5/8" cabinet-grade birch plywood. Two fully isolated left and right sound chambers provide enhanced bottom-end and true stereo performance when used in the stereo mode.

6. Often imitated, never duplicated, Celestion's® Vintage 30's™ are the industry-standard heavy-rock speaker. Another example of the Thermion commitment to using only finest components.

7. Bias adjustment allows easy biasing and changing of tubes (to approximate the same sound as the previous tubes) without removing the chassis. (Should be performed by qualified personnel only.)

8. Big, beefy, high-fidelity output transformer provides the accurate high-end sizzle and full low-end required by modern players (and often not achieved by many tube amps).

®RUBY Tubes™ is a trademark of the Magic Parts Co.

™Celestion and "Vintage 30" are trademarks of the Celestion Corp.

TN120

### TN120 THERMION™ Ibanez all-tube amplifier

- 120W 5%THD @4, 8, or 16 ohms
- All tube signal (NO SOLID-STATE!) line circuitry with mechanical relays
- 4 x 6L6GC/MSTR MATCHED Ruby Tubes™\*\* output tubes (user switchable to 6550s)
- 5 x 12AX7A-SELECTED Ruby Tubes™\*\* preamp tubes
- HI/LO input impedance switch
- Two independent channels: Vintage Channel & Hot Channel
- Tube circuit Effects Loop w/Send and Return Level Control on the front panel and Blend/Series switch on the rear panel.
- Illuminated front panel and illuminated Ibanez logo
- Dampening switch enables different distortion characteristics out of Hot channel
- Rotary 3-position bright switch in Vintage channel
- Traditional passive EQ in both channels
- 3-button footswitch for channel switching, dampening and effects loop on/off.
- Maintenance friendly, professional-grade design includes bias adjustment interface for output tube replacement on top of chassis, IEC 60065 compliance, high efficiency toroidal core transformer with automatically resetting thermal fuse, durable 3/4" plywood cabinet, heavy-duty toggle switches, potentiometers with dust-covers, and more.
- Size : 740 (W) x 290 (H) x 260 (D)
- Weight: 24kg

TN412A

### TN412A THERMION™ traditional angled guitar speaker cabinet

### TN412S THERMION™ straight front angled guitar speaker cabinet

- 4 x Celestion® Vintage 30\*\* speaker drivers
- 5/8" birch plywood provides durability and augments resonance
- Input jacks w/stereo/mono switch
- Separate left and right chambers eliminate acoustic interference
- 2-1/2" large heavy-duty pop-in casters
- Durable 1.5mm black nickel-plated carbon steel corners and additional front angle corners (TN412A)
- Ultra-durable cane.net grill
- Size : 778 (W) x 750 (H) x 366 (D)
- Weight : 50kg

TN412S





# Sound Wave

## Bass Amplifiers

Whether you play funk, metal, or anything in between, Ibanez bass amps provide the right power, tone control and speaker combination for the job, onstage and off.

SW100



### SW100 Sound Wave

- output power 100W@8Ω/145W@4Ω
- speaker unit 15" Ibanez "POWER JAM" speaker with piezo tweeter Direct Out - GND Lift Switch, Post EQ Switch, Sensitivity Switch, Gain, Bass, Middle-Select, Treble, Presence, FX Mix, Volume, Tweeter Switch
- i/o's Input, CD Input, Direct Out, Line Out, Speaker Out, Effects Loop, Tuner Out, Headphones
- cabinet Closed Tilt Back cabinet
- size 540(W) x 590(H) x 490(D) mm
- weight 32.5 kg

### SW115S Sound Wave

- speaker 15" Ibanez "POWER JAM" speaker with piezo tweeter
- power handling 300Wrms/600Wmax
- controls Tweeter Switch
- i/o's Input
- impedance 8Ω
- size 540(W) x 530(H) x 490(D) mm
- weight 25kg



### Power Jam Bass Speaker

Ibanez's original "Power Jam" bass speaker drivers. The PJ1508B 15" 8 ohm speaker driver features a 2" voice coil and big 55 oz ceramic magnet for full bottom end and warm midrange. 300Wrms/600Wmax input rating.

SW115S



### Rear Panel

Includes extension speaker jack, tuner output, and Send and Return jacks.



### Speaker System

The SW100 is equipped with a 15" Power Jam bass speaker and a piezo tweeter which can be turned on/off via a front panel switch.



### 3-Way Middle Frequency Select Rotary Switch

Easily selects 250Hz, 500Hz or 800Hz mid-range frequency positions.



### Direct Out

The SW100's Direct Out is a transformer-balanced XLR connector-output which features completely controlled low impedance works for extremely low signal-level loss. Pre- or Post-EQ switchable and GND Lift switch-equipped to avoid ground loops with other connected equipment.

### Limiters

All Sound Wave series bass amplifiers are equipped with internal limiter circuitry. Extremely natural limiting minimizes distortion and keeps the low-end smooth and punchy.

### SW20 Sound Wave

- output power 20W@4Ω
- speaker unit 8" Ibanez "POWER JAM" Coaxial speaker (with tweeter)
- controls Gain Switch, Volume, Bass, Middle, Treble, Presence
- i/o's Input, CD Input, Headphones
- cabinet Closed Back cabinet
- size 328 (W) x 365 (H) x 277 (D) mm
- weight 8.9 kg



### SW35 Sound Wave

- output power 35W@4Ω
- speaker unit 10" Ibanez "POWER JAM" Coaxial speaker (with tweeter)
- controls Gain Switch, Gain, Bass, Middle, Treble, Presence, Volume
- i/o's Input, CD Input, Line Out, Speaker Out, Effects Loop, Headphones
- cabinet Closed Back Tilt Back cabinet
- size 415 (W) x 445 (H) x 335 (D) mm
- weight 15.6 kg

### SW65 Sound Wave

- output power 65W@4Ω
- speaker unit 12" Ibanez "POWER JAM" speaker with piezo tweeter
- controls Gain Switch, Gain, Bass, Middle, Treble, Presence, Volume
- i/o's Input, CD Input, Line Out, Speaker Out, Effects Loop, Headphones
- cabinet Closed Tilt Back cabinet
- size 460 (W) x 525 (H) x 425 (D) mm
- weight 20.2 kg



### Co-Axial Speaker System

Coaxial speakers on the SW20 and SW35 feature a tweeter mounted in the center of the speaker's pole piece. This design avoids having a particular "hot spot" or "sweet spot" as often found in separate speaker/tweeter setups and provides the full natural sound needed for acoustic guitar reproduction. The SW20 features a PJ804C coaxial speaker (20Wrms/40Wmax input rating). The SW35 is equipped with the PJ1004C (40Wrms/80Wmax input rating).



# TROUBADOUR

## Acoustic Guitar Amplifiers

### TA225 Troubadour

- output power 25W@8Ω + 25W@8Ω
- speaker unit 2 x 10" Ibanez "POWER JAM" speakers with 2 x tweeters
- controls Microphone - Bass, Treble, Volume Instrument - Bass, Parametric EQ Level Parametric EQ, Frequency, Treble, Volume Chorus - ON & OFF Switch, Speed, Depth Reverb Level, Aux - Volume, Master Volume
- i/o's Microphone Input (XLR & 1/4"), Instrument Input, AUX Input (RCA), Effects Loop, Line Out, Foot Switch
- cabinet Closed-Back cabinet with tuned port
- size 630 (W) x 495 (H) x 265 (D) mm
- weight 21.3 kg

\* Latching footswitch IFS2 optionally available.



Acoustic guitars may be fine for a campfire sing along, but sometimes the natural volume of an acoustic guitar is not loud enough. With Ibanez Troubadour acoustic amplifiers, you can amplify your sound for true stage volume in all venues, from coffeehouses to arenas. The Troubadour is available in various sizes to suit every need.

### IBZ10A

- output power 10W@8
- speaker unit 6.5" speaker
- controls Chorus - ON & OFF Switch, Depth, Bass, Middle, Treble, Volume Guitar Input, Headphones Open-Back cabinet
- i/o's 275 (W) x 310 (H) x 195 (D) mm
- cabinet 4.8 kg
- size
- weight

### TA35 Troubadour

- output power 35 W @ 4Ω
- speaker unit 10" Ibanez "POWER JAM" Coaxial speaker (with tweeter)
- controls Guitar - Volume, Chorus - ON & OFF Switch, Speed, Depth Equalization - Bass, Middle Frequency, Middle Level, Treble Reverb - Level, Master Volume
- i/o's Guitar Input, CD Input (RCA), Microphone Input (XLR), Line Out, Foot Switch
- cabinet Sealed-Back/Slant back cabinet
- size 434 (W) x 423 (H) x 365 (D) (mm)
- weight 14.2kg

\* Latching footswitch IFS2X optionally available.

### TA20 Troubadour

- output power 20 W @ 4Ω
- speaker unit 8" Ibanez "POWER JAM" Coaxial speaker (with tweeter)
- controls Guitar - Volume, Chorus - ON & OFF Switch, Speed, Depth Equalization - Bass, Middle Frequency, Middle Level, Treble Reverb - Level
- i/o's Guitar Input, Line Out, Sealed Back cabinet
- cabinet 320 (W) x 361 (H) x 272 (D) (mm)
- size 8.8 kg
- weight

### TA35 Front Panel

The TA35 features onboard chorus with depth and speed controls, reverb and microphone and CD inputs. The pre-amp section of the TA35 has been specially voiced for the acoustic guitar and the TA35 can function as a powered mixer for solo gigs.



# Amplifiers



### VBG-"ValBee"

Valve sound in a compact package.

- output power 5W@4Ω Tube Guitar Amp 1 x 6L6GC (Power), 1 x 12AX7 (Pre)
- speaker unit 6.5" Speaker
- controls Gain, Bass, Middle, Treble, Presence, Volume, Boost SW
- i/o's Guitar Input, Valve Powered Phones/ Rec Out, Send, Return
- cabinet Closed-Back Cabinet
- size 300(W) x 280(H) x 240(D) (mm)
- weight 7.8 kg



### IBZ10G Guitar Amp

- output power 10W@8Ω
- speaker unit 6.5" speaker
- controls Overdrive On/Off Switch, Gain Bass, Middle, Treble, Volume
- i/o's Guitar Input, Headphone, CD Input
- cabinet Closed-Back cabinet
- size 274(W) x 313(H) x 200(D) mm
- weight 5.3 kg



### IBZ10B Bass Amp

- output power 10W@8Ω
- speaker unit 6.5" speaker
- controls Bass, Middle, Treble, Presence, Volume
- i/o's Bass Input, Headphone
- cabinet Closed-Back cabinet for "phatter" bass tone
- size 280 (W) x 310 (H) x 205 (D) mm
- weight 5.1 kg



### GA1G

- 4W Guitar Amp
- AC Adapter included



### GA1B

- 4W Bass Amp
- AC Adapter included

# Tuners



### LU10

Chromatic tuner indicated by LED



### LU20

New Ibanez LU20 digital chromatic pedal tuner has an extra-wide LED display offering superior visibility. Built into strong die-cast chassis, its 3-color indicated flat/sharp LEDs makes on-stage tuning fast and easy. With its true bypass circuit, LU20 outputs the input signal without any loss of its sound quality.



### GU30 BL

Automatic and manual guitar/bass tuner



### GU30 RD



### GU30 SL



### CU30

Chromatic tuner



### MU30

Chromatic tuner & metronome



WD7 Weeping Demon

The most variable and controllable guitar wah you can get. The Weeping Demon's shrieks, cries, wails and seductive siren songs will have your audience screaming for more. The Weeping Demon features spring and normal footboard action, selectable wah range, fine tuning controls and more.

On the outside, Tone-Lok effects are equipped with our exclusive "set and forget" Push-Lok rotary pots. Push the knobs down and your tone settings lock securely inside the case. No loose lost settings or knobs broken.



SM7 Smash Box

The Smashbox is the most aggressive weapon in the Tone-Lok distortion arsenal. Armed with obscene amounts of gain, tight low end, and searing highs, the Smashbox is THE heavy rock sound for the contemporary guitarist. Special "VOID" noise gate and "EDGE" (sharp/smooth) controls let you handle anything from all-out shred to machine-gun metal riffs and rhythms.



DS7 Distortion

The most versatile Ibanez distortion pedal ever, capable of producing a wide range of smooth, dynamic overdrive tones. From a subtle tonal nudge to walloping rock n roll crunch, the DS7 delivers days of sustain and gobbs of gain.



CF7 Chorus/Flinger

The CF7 creates shimmering soundscapes, whooshing jet plane sounds, and contemporary "Korny" chirps and blips. The schizo "KRAZY" switch lets the CF7 be a conservative mode (classic chorus and flangers). Or you can turn the pedal into the proverbial Mr. Hyde... the "WACKY" mode simulates the contemporary modulation sounds used by today's phattest pedals in one.



TS7 Tubescreamer

The Tubescreamer isn't just a stompbox, it's an institution. Our latest generation Tubescreamer, the TS7, is no exception. With the Tubescreamer's classic subtle-but-smooth overdrive, the TS7 expands the expressiveness of your guitar while maintaining its tonal integrity. Tone adjustments are provided by the classic three knob configuration with an added "hot" switch for an extra gain boost.



FZ7 Fuzz

Far out! A complete 60's flashback with none of the drawbacks, the FZ7 is the ultimate in psychedelic fuzz. With the FZ7's tone, drive, and level controls, it's never been easier to get the right retro tones. You can even engage the DAMAGE switch for that ratty, broken speaker sound. Yeah, baby, yeah! Dial in, turn up, drop down or whatever turns you on.



DE7 Delay/Echo

Add new dimensions to your sound with the DE7 Delay/Echo pedal. Get the best of both worlds: high tech digital sounds comparable to expensive rack units or warm vintage tape echo sounds—all with a simple flick of the switch. TIME, REPEAT and LEVEL controls help you dial in just the right amount of delay, while stereo outputs can be used for a more spacious sound. With a range of 30ms to 2.8 seconds, the DE7 is the only sound solution for every playing situation.



PH7 Phaser

Designed to emulate the effect of a rotating speaker, the PH7 has a switchable phase circuit capable of either four or eight stages of smooth phasing. With these two very different tonal modes, you can go from a subtle shimmer to all out 70's "Let's Get Furry" phasing.



PM7 Phase Modulator

If you've gone through one phase after another, maybe it's time for the final phase. The PM7 Phase Modulator offers three types of waveforms to give you everything from classic phaser to DJ effects to loy, ray gun sounds. Since good things come in threes, the PM7 also has three phase stages: vintage, deep and dry, and deep and pronounced. With some minor tweaking, the PM7 goes from traditional to 21st century and beyond.



AW7 Autowah

There are autowahs. And there are autowahs. But the Tone-Lok AW7 isn't just any autowah. It's got standard wah where both the highs and lows are cut and it's got a wah setting where only the highs are cut. And it's got a Band Pass Filter provides the sound of a standard wah pedal left at one setting (a favorite wah pedal technique of Joe Satriani). You can even change the chain order of the effects to get different tones: either distortion to wah or wah to distortion.



LF7 Lo Fi

The first dedicated filter pedal for the guitar, the LF7's voltage controlled analog high and low pass filters allow you to emulate transistor radio and megaphone type sounds. Best used at the end of a signal chain in combination with other pedals, this ticking time bomb creates wide soundscapes of far out tones that previously required a massive rack of analog electronics. The Lo Fi also performs equally well with vocals, drum machines or in any "mix-down" context.



PD7 Phat-Hed Bass Overdrive

Why let guitarists rule the stage? Loaded with growing low-end distortion, the PD7 levels the playing field for the rock bassist. The PD7 is armed with three pre-amp style voicings and an attack control switch, which accents the amount of harmonic content in your sound. With DRIVE, LO, HI, and LEVEL knobs, dialing in a thunderous bass sound has never been easier.



SB7 Synthesizer Bass

If you're looking for new tones or you're still smoldering with resentment against synth bass keyboard players, the SB7 is the ticket. You've got real time feel—in other words no annoying tracking errors and delays. You can even play chords.

# Classic Analog Effects

## TS808 & 9 SERIES

When it comes to compact effects, nine is the magic number. There are sound reasons why, twenty years after they were first made, you still see these effects in players' rigs. If you missed out on getting one of these classics the first time around, it's time. The reissue of the TS808, described as "the Holy Grail of Tubescreamers," features the warm tones of the JRC4558D chip used in most of the original TS808's.



TS808



TS9



TS9DX



FL9



CS9



AD9

## TONE-LOK EFFECTS PEDALS

On the inside, Tone-Lok pedals feature hi-fidelity components carefully tweaked with the constant input from a new generation of Ibanez players. And all this great stuff comes encased in cool looking, road tough metal boxes at prices the working player can afford.

# Picks

Ibanez offers picks for just about every type of player with different feels, functions and looks. Function wise, the Grip Wizard series feature sand or rubber grips for superior gripping ability. Look wise, Ibanez offers a selection of original metallic colors and other unique colors and designs. And then there is the signature line of picks that are exactly what the artists use in most cases. In fact, Steve Vai won't use anything but his signature Ibanez picks.

## Basic Color Series

Also, Ibanez covers the basic picks with orthodox shape & color. You can choose from 6 kinds of shapes and 2 kinds of material.



CE4H-WH 1.0mm thickness  
CE4M-WH 0.75mm thickness  
CE4T-WH 0.5mm thickness  
CE4H-BK 1.0mm thickness  
CE4M-BK 0.75mm thickness  
CE4T-BK 0.5mm thickness  
CE4H-SH 1.0mm thickness  
CE4M-SH 0.75mm thickness  
CE4T-SH 0.5mm thickness  
CE4H-PL 1.0mm thickness  
CE4M-PL 0.75mm thickness  
CE4T-PL 0.5mm thickness



CE6H-WH 1.0mm thickness  
CE6M-WH 0.75mm thickness  
CE6H-BK 1.0mm thickness  
CE6M-BK 0.75mm thickness  
CE6H-SH 1.0mm thickness  
CE6M-SH 0.75mm thickness



CE14H-WH 1.0mm thickness  
CE14M-WH 0.75mm thickness  
CE14H-BK 1.0mm thickness  
CE14M-BK 0.75mm thickness  
CE14H-SH 1.0mm thickness  
CE14M-SH 0.75mm thickness



CE16H-WH 1.0mm thickness  
CE16M-WH 0.75mm thickness  
CE16H-BK 1.0mm thickness  
CE16M-BK 0.75mm thickness  
CE16H-SH 1.0mm thickness  
CE16M-SH 0.75mm thickness



CE20H-BK 0.75mm thickness  
CE20M-BK 0.75mm thickness  
CE20H-SH 1.0mm thickness  
CE20M-SH 0.75mm thickness  
CE22L-PL Triad Pick



PA6H-WH 1.0mm thickness  
PA6M-WH 0.8mm thickness  
PA6H-BK 1.0mm thickness  
PA6M-BK 0.8mm thickness  
PA14H-WH 1.0mm thickness  
PA14M-WH 0.8mm thickness  
PA14H-BK 1.0mm thickness  
PA14M-BK 0.8mm thickness

## Metallic Color Series

Ibanez offers metallic color picks with hair-line finish. Its full hard appearance will match the Heavy Metal / Hard Rock players.



CE14H-HTN 1.0mm thickness  
CE14M-HTN 0.75mm thickness  
CE14H-HTC 1.0mm thickness  
CE14M-HTC 0.75mm thickness  
CE14H-HTB 1.0mm thickness  
CE14M-HTB 0.75mm thickness  
CE14H-HSN 1.0mm thickness  
CE14M-HSN 0.75mm thickness  
CE14H-HSC 1.0mm thickness  
CE14M-HSC 0.75mm thickness



CE14H-HSB 1.0mm thickness  
CE14M-HSB 0.75mm thickness  
CE14H-HGG 1.0mm thickness  
CE14M-HGG 0.75mm thickness  
CE14H-HGC 1.0mm thickness  
CE14M-HGC 0.75mm thickness  
CE14H-HGB 1.0mm thickness  
CE14M-HGB 0.75mm thickness



CE16H-HTN 1.0mm thickness  
CE16M-HTN 0.75mm thickness  
CE16H-HTC 1.0mm thickness  
CE16M-HTC 0.75mm thickness  
CE16H-HTB 1.0mm thickness  
CE16M-HTB 0.75mm thickness  
CE16H-HSN 1.0mm thickness  
CE16M-HSN 0.75mm thickness  
CE16H-HSC 1.0mm thickness  
CE16M-HSC 0.75mm thickness



CE16H-HSB 1.0mm thickness  
CE16M-HSB 0.75mm thickness  
CE16H-HGG 1.0mm thickness  
CE16M-HGG 0.75mm thickness  
CE16H-HGC 1.0mm thickness  
CE16M-HGC 0.75mm thickness  
CE16H-HGB 1.0mm thickness  
CE16M-HGB 0.75mm thickness



PV6H-CAM 1.0mm thickness  
PV6H-GRM 1.0mm thickness  
PV6H-JBM 1.0mm thickness



PV16H-CAM 1.0mm thickness  
PV16H-GRM 1.0mm thickness  
PV16H-JBM 1.0mm thickness



PV20H-CAM 1.0mm thickness  
PV20H-GRM 1.0mm thickness  
PV20H-JBM 1.0mm thickness  
PC16H-SLM 1.0mm thickness



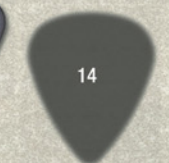
4



6



8



14



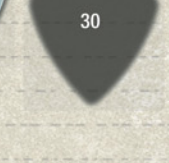
16



17



20



30

## Ibanez Classic Design Series

Three of Ibanez' legendary icons are now featured on picks – "Ibanez Butterfly," "Tree of Life," and a new design derived from the "Ibanez checkmark."



TL16H-WH 1.0mm thickness  
TL16M-WH 0.75mm thickness  
TL16H-BK 1.0mm thickness  
TL16M-BK 0.75mm thickness  
TL16H-GR 1.0mm thickness  
TL16M-GR 0.75mm thickness  
TL16H-BL 1.0mm thickness  
TL16M-BL 0.75mm thickness  
TL16H-RD 1.0mm thickness  
TL16M-RD 0.75mm thickness  
TL16H-CL 1.0mm thickness  
TL16M-CL 0.75mm thickness



CI16H-WH 1.0mm thickness  
CI16M-WH 0.75mm thickness  
CI16H-BK 1.0mm thickness  
CI16M-BK 0.75mm thickness  
CI16H-GR 1.0mm thickness  
CI16M-GR 0.75mm thickness  
CI16H-BL 1.0mm thickness  
CI16M-BL 0.75mm thickness  
CI16H-RD 1.0mm thickness  
CI16M-RD 0.75mm thickness  
CI16H-CL 1.0mm thickness  
CI16M-CL 0.75mm thickness



IB16H-WH 1.0mm thickness  
IB16M-WH 0.75mm thickness  
IB16H-BK 1.0mm thickness  
IB16M-BK 0.75mm thickness  
IB16H-GR 1.0mm thickness  
IB16M-GR 0.75mm thickness  
IB16H-BL 1.0mm thickness  
IB16M-BL 0.75mm thickness  
IB16H-RD 1.0mm thickness  
IB16M-RD 0.75mm thickness  
IB16H-CL 1.0mm thickness  
IB16M-CL 0.75mm thickness

## Signature Models

### Steve Vai

Here are the Vai's signature picks, and he won't use anything else.



1000SWHR 1.0mm thickness featuring "rubber grip"  
1000SMP 1.0mm thickness  
1000SVR 1.0mm thickness  
1000SVR 1.0mm thickness

### The Offspring

Be different. The Offspring picks feature the band symbol on one side, and the band name written in Japanese on the other.



OS-BL 1.0mm thickness  
OS-SL 1.0mm thickness  
OS-RD 1.0mm thickness  
OS-BK 1.0mm thickness

### Paul Gilbert

This original shaped picks are what THE guitarist with style and speed need.



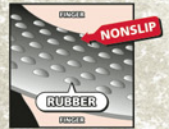
1000PGPW 1.0mm thickness  
1000PGCA 1.0mm thickness  
1000PGJB 1.0mm thickness  
1000PGWH 1.0mm thickness  
1000PGBK 1.0mm thickness



## Grip Wizard Series

### Rubber Grip

Non-slip rubber softly fits your finger. Available on polyacetal, or super hard PPS material picks.



### PPS



PS8HR-BK 1.0mm thickness  
PS8MR-BK 0.8mm thickness  
PS17HR-BK 1.2mm thickness  
PS17MR-BK 0.8mm thickness  
PS30XR-BK 1.2mm thickness  
PS30HR-BK 1.0mm thickness

### Polyacetal



PA16XR-WH 1.0mm thickness  
PA16HR-WH 1.0mm thickness  
PA16MR-WH 0.8mm thickness  
PA16XR-BK 1.0mm thickness  
PA16HR-BK 1.0mm thickness  
PA16MR-BK 0.8mm thickness  
PA16XR-BL 1.0mm thickness  
PA16HR-BL 1.0mm thickness  
PA16MR-BL 0.8mm thickness  
PA16XR-RD 1.0mm thickness  
PA16HR-RD 1.0mm thickness  
PA16MR-RD 0.8mm thickness

## Grip Wizard Series

### Sand Grip

Dense and wide surface sand provides hard and sure grip.



PA16XS-WH 1.2mm thickness  
PA16HS-WH 1.0mm thickness  
PA16MS-WH 0.8mm thickness  
PA16XS-BK 1.2mm thickness  
PA16HS-BK 1.0mm thickness  
PA16MS-BK 0.8mm thickness  
PA16XS-BL 1.2mm thickness  
PA16HS-BL 1.0mm thickness  
PA16MS-BL 0.8mm thickness  
PA16XS-RD 1.2mm thickness  
PA16HS-RD 1.0mm thickness  
PA16MS-RD 0.8mm thickness

# Bags

**IGB7-BK**  
Bag for El. guitar  
**IBB7-BK**  
Bag for El. bass



**IDGB5-BK**  
Bag for El. guitar  
**IDBB5-BK**  
Bag for El. bass



## Deluxe Bags

Ultimate gig bag for players on the go. With the detachable accessory bag inserted in the EVA pocket, you can carry your effects, cables, and even your laptop computer comfortably.

## Double Bags

Ibanez double gig bag lets you carry two instruments in one bag. With the wheel on the bottom, you can carry your guitars without any hassle.

## Standard Bags

Even the most affordable bags have features to hold your instruments securely. Adjustable shoulder straps and easy grip handle equipped.

**ISGB5-BK** Bag for El. guitar  
**ISGSB5-BK** Bag for AD series  
**ISBB5-BK** Bag for El. bass

**300GBP**  
Bag for El. guitar



**300BBP**  
Bag for El. bass



Backpack

## Deluxe Bags w/Backpack

The 300GBP/300BBP bags feature a detachable backpack. Not only is it handy for carrying accessories around along with your guitar or bass, it detaches for typical backpack use.



**ISGE5-BK** Bag for El. guitar  
**ISGE5-BL** **ISGE5-GY** **ISGE5-PK** **ISGE5-YW** **ISGE5-WH**

## Colored Bags

Why only black bags? Now Ibanez offers gig bags in various colors to accommodate your own style.



**Original Shape Bag**  
**IGH7**  
Bag for El. guitar

# Cases

No matter which Ibanez guitar or bass you choose, you'll want to protect your valuable investment. Do it in style with an authentic Ibanez hard shell case.

**W50RG** for all of RG, S, SA (incl. 27" scale & left handed models)  
**W50SZ** for SZ



**M100C** for RG, RG7, S, SA, JS (except 27" scale & left handed models)



**MB100C** for SR, SRX, EDB, DWB, GWB (except left handed models)



**W50BTB** for BTB, ATK, RD  
**W50SR** for all of SR (incl. left handed models)



**AFS-C** for AF, AFS, AK  
**AF-C** for GB200, PM  
**AS-C** for AS, JSM  
**GB-C** for GB10, GB100  
**AR-C** for AR, AX

# Cables

## GUITAR CABLES

### Series 96

96 micro-standards of silver plated copper core wires offer low impedance and maximum signal transfer.

- Core: 0.1 x 96 (Silver Plated)
- Shield (Braided): 0.1 x 8 x 12 (OFC 99.99%)
- Sure Grip Rubber on Plug
- Velcro Strap with Ibanez Logo equipped
- Outer Jacket: PVC, Woven

### Series DS

double-shielded construction offers pro-quality and durability at standard cable prices.

- Core: OFC (99.99%)
- Shield: OFC (99.99%) Braided and Aluminum Sheet
- Velcro Strap with Ibanez Logo equipped
- Outer Jacket: PVC, Woven (Black, Red & Blue colors are available)

### Woven Cables



Black Blue Red

### Standard Cables

Ibanez Standard Guitar/Instrument Cable



### Series 96

NSC6 Guitar/Instrument Cable  
Jack type: Straight, Length: 1.83m (6ft)

NSC6L Guitar/Instrument Cable  
Jack type: Straight & Angled, Length: 1.83m (6ft)

NSC10BK Guitar/Instrument Cable (Woven / Black)  
Jack type: Straight, Length: 3.05m (10 ft)

NSC10 Guitar/Instrument Cable  
Jack type: Straight, Length: 3.05m (10ft)

NSC10L Guitar/Instrument Cable  
Jack type: Straight & Angled, Length: 3.05m (10ft)

### Series DS

DSC6 Guitar/Instrument Cable  
Jack type: Straight, Length: 1.83m (6ft)

DSC6L Guitar/Instrument Cable  
Jack type: Straight & Angled, Length: 1.83m (6ft)

DSC10BK Guitar/Instrument Cable (Woven / Black)  
Jack type: Straight, Length: 3.05m (10 ft)

DSC10BL Guitar/Instrument Cable (Woven / Blue)  
Jack type: Straight, Length: 3.05m (10 ft)

DSC10RD Guitar/Instrument Cable (Woven / Red)  
Jack type: Straight, Length: 3.05m (10 ft)

DSC10L Guitar/Instrument Cable  
Jack type: Straight, Length: 3.05m (10ft)

DSC10LL Guitar/Instrument Cable  
Jack type: Straight & Angled, Length: 3.05m (10ft)

DSC10LL Guitar/Instrument Cable  
Jack type: Angled, Length: 3.05m (10ft)

DSC15L Guitar/Instrument Cable  
Jack type: Straight & Angled, Length: 4.58m (15ft)

DSC15LL Guitar/Instrument Cable  
Jack type: Straight & Angled, Length: 4.58m (15ft)

DSC15LL Guitar/Instrument Cable  
Jack type: Angled, Length: 4.58m (15ft)

### Standard Cables

IC15 Guitar/Instrument Cable  
Jack type: Straight, Length: 1.5m

IC30 Guitar/Instrument Cable  
Jack type: Straight, Length: 3m

ICL30 Guitar/Instrument Cable  
Jack type: Straight & Angled, Length: 3m

IC50 Guitar/Instrument Cable  
Jack type: Straight, Length: 5m

ICL50 Guitar/Instrument Cable  
Jack type: Straight & Angled, Length: 5m

NSC15 Guitar/Instrument Cable  
Jack type: Straight, Length: 4.58m (15ft)

NSC15L Guitar/Instrument Cable  
Jack type: Straight & Angled, Length: 4.58m (15ft)

NSC20BK Guitar/Instrument Cable (Woven / Black)  
Jack type: Straight, Length: 6.10m (20 ft)

NSC20 Guitar/Instrument Cable  
Jack type: Straight, Length: 6.10m (20ft)

NSC20L Guitar/Instrument Cable  
Jack type: Straight & Angled, Length: 6.10m (20ft)

DSC20BK Guitar/Instrument Cable (Woven / Black)  
Jack type: Straight, Length: 6.10m (20 ft)

DSC20BL Guitar/Instrument Cable (Woven / Blue)  
Jack type: Straight, Length: 6.10m (20 ft)

DSC20RD Guitar/Instrument Cable (Woven / Red)  
Jack type: Straight, Length: 6.10m (20 ft)

DSC20L Guitar/Instrument Cable  
Jack type: Straight, Length: 6.10m (20ft)

DSC20LL Guitar/Instrument Cable  
Jack type: Angled, Length: 6.10m (20ft)

DSC25 Guitar/Instrument Cable  
Jack type: Straight, Length: 7.63m (25ft)

DSC25L Guitar/Instrument Cable  
Jack type: Straight & Angled, Length: 7.63m (25ft)

DSC25L Guitar/Instrument Cable  
Jack type: Angled, Length: 7.63m (25ft)

DSC25LL Patch Cable  
Jack type: Angled, Length: 15cm (0.5ft)

DSC25LL Patch Cable  
Jack type: Angled, Length: 29cm (0.9ft)

DSC25LL Patch Cable  
Jack type: Angled, Length: 29cm (0.9ft)

IC70 Guitar/Instrument Cable  
Jack type: Straight, Length: 7m

ICL70 Guitar/Instrument Cable  
Jack type: Straight & Angled, Length: 7m

ICLL015 Patch Cable  
Jack type: Angled, Length: 15cm

ICLL050 Patch Cable  
Jack type: Angled, Length: 50cm

## MICROPHONE CABLES

- Core: OFC (99.99%)
- Shield (Braided): 0.12 x 64
- Velcro Strap with Ibanez Logo equipped
- Plug Type: 1/4" XLR
- Length: 3.05m (10ft), 6.10m (20ft), 15.25m (50ft)

MCC10 Microphone Cable  
XLR-XLR 3.05 m (10 ft)

MCCP10 Microphone Cable  
XLR-1/4" 3.05 m (10 ft)

MCC20 Microphone Cable  
XLR-XLR 6.10 m (20 ft)

MCCP20 Microphone Cable  
XLR-1/4" 6.10 m (20 ft)

MCC50 Microphone Cable  
XLR-XLR 15.24 m (50 ft)

MCCP50 Microphone Cable  
XLR-1/4" 15.24 m (50 ft)



## SPEAKER CABLES

- Core: 0.1 x 200 (Silver Plated) x 2
- Shield: Braided
- Velcro Strap with Ibanez Logo equipped
- Plug Type: 1/4"
- Length: 1.83m (6ft), 3.05m (10ft), 7.63m (25ft), 15.25m (50ft)

SPCPP6 Speaker Cable  
1/4" 1.83 m (6 ft)

SPCPP10 Speaker Cable  
1/4" 3.05 m (10 ft)

SPCPP25 Speaker Cable  
1/4" 7.63 m (25 ft)

SPCPP50 Speaker Cable  
1/4" 15.24 m (50 ft)



## STRAPS



GS700

GS1000T

GS1000A

GS1000

GSLS

GS700BK/CA

GS1000T BK/WH/CA  
Turbo Printed Strap

GS1000BK  
Quick Release Strap

GS1000A  
Strap Designed for Acoustic Guitar

GS60

GS60L  
60mm width / 1500mm length

GS60 WR  
60mm width / 1800mm length

GS60 MC

GS60 DR

GS60 KI

GS60 BK

LS65 BK

LS65 BR

LS65 RD

## DC CORD & ADAPTERS



AC109  
Standard 9-volt 200mA regulated  
adapter for Ibanez compact effects.



DC3&DC5  
Splitter cords for powering 3 or  
5 pedals from one adapter.



AC509  
Standard 9-volt 500mA  
regulated adapter for  
Ibanez compact effects.

## NUT FRET FILES



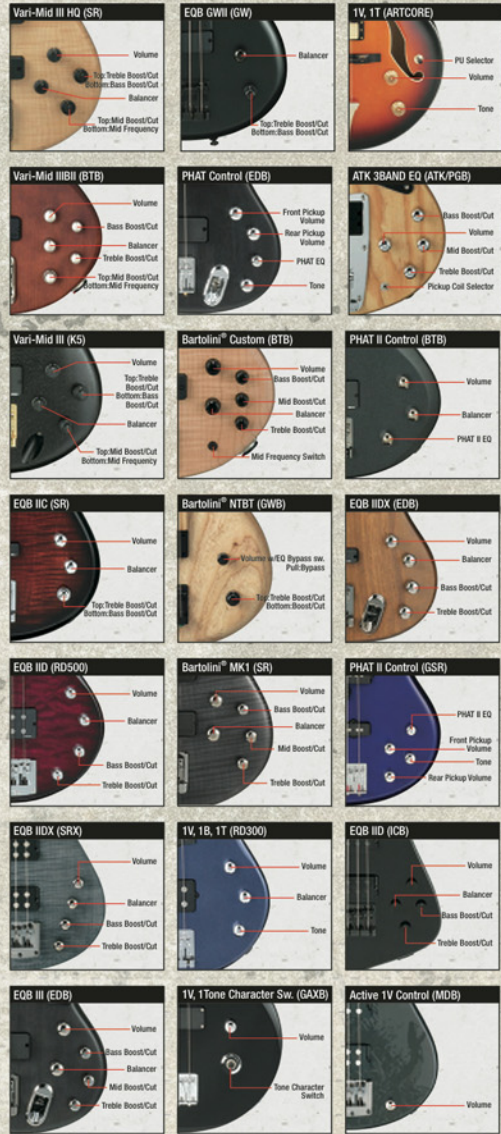
4451 (left)  
Nut File Set (3pcs. = 1set)  
file gauge (inch):  
0.012 & 0.032/0.016 &  
0.042/0.025 & 0.052

4450 (right)  
Fret File Set (3pcs. = 1set)  
file gauge (inch): 0.079, 0.098,  
0.118



4449  
Nut File Set  
file gauge (inch): 0.010, 0.013,  
0.017, 0.024, 0.032, 0.036,  
0.046, 0.056

# Electronics



# Neck Dimensions

NECK MODEL	SCALE LENGTH	WIDTH AT NUT	WIDTH AT LAST FRET	THICKNESS AT 1ST FRET	THICKNESS AT 12TH FRET	RADIUS
<b>GUITAR NECK DIMENSIONS</b>						
APEX	648mm/25.5"	48mm	68mm	19mm	21mm	430mmR
AR/GAX	628mm/24.75"	43mm	57mm	20mm	22mm	305mmR
GAX2	628mm/24.75"	43mm	57mm	20mm	22mm	400mmR
ARC/ARK/ART/AD	628mm/24.75"	43mm	58.5mm	20mm	22.5mm	305mmR
ARTCORE (AR/AS/AG/AK)	628mm/24.75"	43mm	58.5mm	20mm	22.5mm	305mmR
ARTCORE (AG/AS/AM)	648mm/25.5"	40.5mm	56mm	21mm	23mm	305mmR
AT	628mm/24.75"	43mm	57mm	20mm	22mm	305mmR
GB	628mm/24.75"	43mm	57mm	20mm	22mm	305mmR
GB1 S	628mm/24.75"	44mm	58mm	20mm	23mm	305mmR
IC	628mm/24.75"	42mm	56mm	20mm	22mm	305mmR
JEM	648mm/25.5"	43mm	56mm	19mm	21mm	430mmR
JTK2	648mm/25.5"	43mm	56mm	21.5mm	23mm	305mmR
JS	648mm/25.5"	42mm	56mm	20mm	22.3mm	250mmR
JSM	628mm/24.75"	43.5mm	57mm	20.2mm	23.3mm	COMPOUND
MBM	648mm/25.5"	43mm	58mm	18mm	20mm	430mmR
MMM	712mm/28"	43mm	56mm	21.2mm	23mm	400mmR
NDM	648mm/25.5"	42mm	56mm	20mm	22mm	240mmR
PGM	648mm/25.5"	43mm	58mm	18mm	20mm	430mmR
PM	628mm/24.75"	43mm	57mm	21mm	23mm	305mmR
GRG1	648mm/25.5"	42mm	56mm	19.5mm	21.5mm	400mmR
GRG2/SA/GSA	648mm/25.5"	43mm	56mm	19.5mm	21.5mm	400mmR
GRGM	560mm/22"	42mm	56mm	20.5mm	23mm	400mmR
SAS	648mm/25.5"	42mm	56mm	19.5mm	21.5mm	400mmR
SAS2	648mm/25.5"	42mm	57mm	19.5mm	21.5mm	400mmR
SZ/6S2	638mm/25.1"	43mm	57mm	21mm	23mm	305mmR
ULTRA	648mm/25.5"	48mm	68mm	19mm	21mm	430mmR
ULTRA-8	685.8mm/27"	54mm	78mm	20mm	21.5mm	430mmR
UV	648mm/25.5"	48mm	68mm	19mm	21mm	430mmR
WIZARD	648mm/25.5"	43mm	58mm	18mm	20mm	430mmR
WIZARD II	648mm/25.5"	43mm	56mm	19mm	21mm	400mmR
WIZARD R-7	648mm/25.5"	46mm	65mm	19mm	21mm	400mmR
<b>BASS NECK DIMENSIONS</b>						
ARTCORE	770mm/30.3"	42mm	63mm	21.5mm	25mm	305mmR
ATK4	864mm/34"	42.5mm	63mm	21mm	24mm	240mmR
ATK5	864mm/34"	45mm	68mm	21mm	24mm	240mmR
BT4 (except BTB200)	889mm/35"	41mm	64mm	20mm	22mm	300mmR
BT4 (for BTB200)	889mm/35"	38mm	62mm	20.5mm	22.5mm	305mmR
BT5 (except BTB205)	889mm/35"	47mm	74mm	20mm	22mm	500mmR
BT5 (for BTB205)	889mm/35"	45mm	74mm	20.5mm	22.5mm	305mmR
BT6	893mm/38"	54mm	85mm	20mm	22mm	1000mmR
EDB4	864mm/34"	38mm	62mm	20.5mm	22mm	305mmR
EDB5	864mm/34"	45mm	67mm	20.5mm	22mm	305mmR
GW1005	864mm/34"	45mm	67mm	19mm	21mm	305mmR
ICB4	864mm/34"	40mm	60mm	19mm	21mm	500mmR
KS	864mm/34"	45mm	67mm	19.5mm	21.5mm	305mmR
MDB4	864mm/34"	38mm	62mm	21mm	23mm	305mmR
PGB4	864mm/34"	42.5mm	63mm	21mm	24mm	240mmR
RD4 (except RD300)	864mm/34"	41mm	63mm	21.5mm	23.5mm	300mmR
RD4 (for RD300)	864mm/34"	41mm	63mm	21.5mm	23.5mm	250mmR
RDS	864mm/34"	45mm	72mm	21.5mm	23.5mm	500mmR
SR4 neck-thru	864mm/34"	38mm	62mm	21mm	23.5mm	305mmR
SR4	864mm/34"	38mm	62mm	20.5mm	22.5mm	305mmR
GSR4	864mm/34"	41mm	62mm	21mm	22mm	305mmR
SR5 neck-thru	864mm/34"	45mm	67mm	21.5mm	23.5mm	305mmR
SR5	864mm/34"	45mm	67mm	20.5mm	22.5mm	305mmR
GSR5	864mm/34"	45mm	67mm	21mm	22mm	305mmR
SR6 neck-thru	864mm/34"	54mm	83mm	21.5mm	23.5mm	400mmR
SR6	864mm/34"	54mm	83mm	20.5mm	22.5mm	400mmR
SRX4	864mm/34"	38mm	62mm	21mm	23mm	305mmR
SRX5	864mm/34"	45mm	73mm	21mm	23mm	400mmR
GAXB4	812mm/32"	41mm	61mm	21mm	22mm	305mmR

# Pickup Character

MODEL NO.	NAME	OUTPUT	CONSTRUCTION	DESCRIPTION KEY		
<b>IBANEZ GUITAR PICKUPS</b>						
ACH1	ACH1	N	H	C	Clear sounding with a slight overdrive.	
ACH2	ACH2	B	H	C	Wedge version of ACH1.	
ACH1-S	ACH1-S	N	H	C	Light tone with added lows.	
ACH2-S	ACH2-S	B	H	C	Wedge version of ACH1-S.	
AH1	AXIS HUMBUCKER 1	N	H	C	Very responsive and full sounding, excellent string-to-string clarity. Custom wound for Joe Bonamassa.	
AH2	AXIS HUMBUCKER 2	B	H	C	Full bass sound. Almost magnetic qualities. Excellent clarity of harmonics and excellent tone.	
AH5	AXIS HUMBUCKER 5	N	H	C	Very responsive and full sounding, excellent clarity with lots of character and great sustain.	
AH6	AXIS HUMBUCKER 6	B	H	C	Full bass sound. Almost magnetic qualities. Excellent clarity of harmonics and excellent tone.	
AH7-1	AXIS HUMBUCKER 7-1	N	H	C	Soaring version of AH1 pickup.	
AH7-2	AXIS HUMBUCKER 7-2	B	H	C	Soaring version of AH2 pickup.	
AH51	AXIS SINGLE 1	N	S	A	Traditional sounding single coil pickup with increased output for each position.	
AH52	AXIS SINGLE 2	M	A	A	Traditional sounding single coil pickup with increased output for each position.	
CUSTOM-F	CUSTOM-F	N	H	C	Flamingo pickup designed for Al Yess.	
GB SPECIAL	GB SPECIAL	B	H	A	Flamingo pickup redesigned by George Benson for higher output and better sustain. Also, well-suited to rock with the "Bartolini" tone.	
GB SPECIAL	GB SPECIAL	N	H	C	Rock version of GB.	
INF1	INFINITY 1	N	H	C	Highly responsive with warm, round and full sound.	
INF2	INFINITY 2	B	H	A	Traditional sounding pickup. More response for sustained notes. Excellent sustain.	
INF3	INFINITY 3	N	H	C	Provides the dynamic sound for country and blues.	
INF4	INFINITY 4	B	H	A	Full bass sound. Great sustain. Excellent clarity of harmonics.	
INF51	INFINITY SINGLE 1	M	S	A	Warm single coil tone with added output.	
INF53	INFINITY SINGLE 3	M	S	A	Highly responsive and full sounding. Designed to work with humbuckers for the full palette.	
PSND1	PSND1	N	H	C	High output and well-suited to "cathartic" tone.	
PSND5	PSND5	M	S	A	High output with complete tone.	
PSND2	PSND2	B	H	C	High output with increased sustain.	
S1	SINGLE 1	M	S	A	Traditional sounding, but high output single coil pickup. Designed for sustained notes and high output.	
SSB	SUPER 5B	N	H	C	Classic warm and musical. Excellent bass jazz and rock without feedback.	
SL58	SILENT 5B	A11	H	A	Classic, warm and musical. Excellent bass jazz and rock without feedback.	
True Duo	True Duo Buckler	B	H	A	Designed for matching between passive double and single coil used in one pickup.	
V7	V7	N	H	C	Light, but bright. Very dynamic. For chording and rhythm.	
V8	V8	B	H	A	Warm and articulate lead pickup with reduced overdrive. Good response without excessive dynamics.	
V77	V77	N	H	C	Soaring version of V7 pickup.	
V87	V87	B	H	C	Soaring version of V8 pickup.	
VK1	VK1	N	H	A	High output, well-suited to high act.	
VK2	VK2	B	H	A	Wedge version of VK1.	
<b>IBANEZ BASS PICKUPS</b>						
ACHB-2	ACHB-2	B	H	H	C	High output humbucking pickup.
ADXS	ACTIVE DYNAMIX 5	B	H	A	C	Active system, actively equalized 5 string. Not patented, and includes passive mode output. Individual coil output for lead and bridge positions.
AIKA	AIK TRIPLE COIL	B	H	C	C	Many features and natural high end.
DIK4	DYNAMIC 4	B	H	C	C	Two different sound bass pickups even using output. Full range, passive bass sound with plenty of punch.
DIK5	DYNAMIC 5	B	H	C	C	5-String version of DIK4.
DIKJ	DYNAMIC J	B	H	C	C	Designed to be used with or without an system for high output.
DIXP	DYNAMIC P	N	H	C	C	Designed to be used with or without an system for more punch.
DJVS	DYNAMIC S	B	H	C	C	Designed to be used with or without an system for high output.
PSNDJ	PSNDJ	B	H	C	C	High output with added highs.
PSNDM	PSNDM	B	H	C	C	High output humbucking pickup.
PSNDP	PSNDP	B	H	C	C	High output with plenty of punch.
DFR-4	DYNAMIC FULL RANGE	B	H	C	C	Medium output passive pickup with good attack and superior dynamics.
DFR-5	DYNAMIC FULL RANGE	B	H	C	C	5-String version of DFR-4 pickup.
DXXH-M	ERGO DYNAMIC	B	H	C	C	Designed with good response punch. Designed specifically to work with the active body circuit of Bartolini bass.
PRR-AL4	PASSIVE FULL RANGE	B	H	C	A	Powerful Altra magnet pickup with exceptional clarity and very even response.
PRR-4	PASSIVE FULL RANGE	B	H	C	C	Powerful full range pickup with added low end.
PRR-5	PASSIVE FULL RANGE	N	H	C	C	Powerful full range pickup with added low end.
SFR-GW	SONIC FULL RANGE	B	H	C	C	Custom wound for DMR31. Quick attack, superior dynamics and added highs.
DI54	DUAL COIL SOAP BAR	B	H	C	C	Powerful wide range tone.

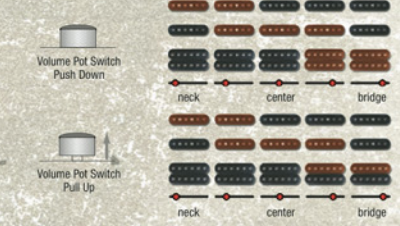
MODEL NO.	NAME	OUTPUT	CONSTRUCTION	DESCRIPTION KEY		
<b>BARTOLINI® BASS PICKUPS (INDIVIDUAL BARTOLINI PICKUPS ARE NOT SOLD BY IBANEZ)</b>						
GBW	BARTOLINI WILLIS	B	H	H	C	Warm response with the rich string to allow more precise string-to-string clarity. (for DMR32)
SR Bass	BARTOLINI CUSTOM	B	H	H	C	Powerful active vintage pickup. Excellent clarity with well balanced response.
BTB Bass	BARTOLINI CUSTOM	B	H	H	C	Humbucking passive vintage pickup assembly designed for 35 neck scale. 200k potentiometer. Excellent low end, warm and clear tone.
MK1	MK1	B	H	H	C	Not followed tone.
<b>DIMARZIO® GUITAR PICKUPS (INDIVIDUAL DIMARZIO PICKUPS ARE NOT SOLD BY IBANEZ)</b>						
DP151	PAF-PRO™	B	N	H	A	Classic humbucking sound with added presence, output and clarity.
DP153	FREED™	B	H	H	A	Strong mid and a wide range of harmonics and overtones.
DP158	EVOLUTION™	N	H	H	A	Designed to DP151 for punch and lead. Designed for clear tone.
DP759	PAF-7™	B	N	H	A	Close to PAF A, more modern, better output. Pickups that perform like the classic humbucker of the late '50s.
DP213	PAF-JOE™	N	H	H	A	Vintage humbucking sound with limited, clear tone and warm mid/high.
DPS1	EVOLUTION™	N	S	C	C	Bright, clean tone.
DP159	EVOLUTION™	N	H	A	C	High, aggressive and tender. Wide range of output.
DP700	BLAZE™ II	N	H	C	C	Medium punch, warm, clean tone.
DP701	BLAZE™ II	M	S	C	C	Bright, clean tone.
DP702	BLAZE™ II	B	H	C	C	High punch, cutting bass and tight, clean mid.
DP165	BREED™	N	H	A	A	Designed for Steve Vai's smooth and fluid humbucking tone. Better than PAF-PRO, but not as hot as an overdrive.
N/A	BREED™	M	S	A	A	Bright, clean tone.
N/A	JEM SINGLE	M	S	A	A	FR enclosure. Classic single coil tone. Calibrated for perfect balance with Bartolini pickups.
DP166	BREED™	B	H	A	A	High output version of the DP165.
DP187	CRISEER™	N	H	A	A	Single speed humbucking pickup. Clear and bright, without noise.
N/A	AT CUSTOM (H)	B	H	H	A	All enclosure. Vintage warm humbucker tone.
N/A	D Activator™	B	H	C	C	Fast pick tone, with no harmonics. Responds instantly to lead or high pick attack.
N/A	D Activator™	N	H	C	C	Rich version of above.
N/A	D Activator™	M	S	A	A	Rich version of above.
N/A	DIMARZIO BZ (H) for RB	B	H	C	C	Artificially slow attack output pickup.
N/A	DIMARZIO BZ (S) for RS	M	S	A	A	Warm tone and clear, well humbucker.
N/A	DIMARZIO BZ (S) for SA	M	S	A	A	Well balanced sound with clear tone.
N/A	DIMARZIO BZ (S) for SB	B	H	C	C	Designed for vintage looking passive humbucker and slightly slower to pick up.
N/A	DIMARZIO BZ (S) for S	N	H	C	C	Powerful sounding with quick response.
N/A	DIMARZIO BZ (S) for S	N	H	C	C	Wedge version of classic. Excellent harmonics and overtones.
N/A	DIMARZIO BZ (S) for S	M	S	A	A	Well balanced sound with clear tone.
<b>Seymour Duncan® GUITAR PICKUPS (INDIVIDUAL SEYMOUR DUNCAN® PICKUPS ARE NOT SOLD BY IBANEZ)</b>						
TB-10	Full Shred™	B	H	A	A	Fast and clearly, yet with clean behavior.
N/A	Seymour Duncan/IBZ	N	H	A	A	Warm and smooth tone with superior sustain.
N/A	Seymour Duncan/IBZ	B	H	C	C	Provides fast but clear sound with aggressive harmonics.
N/A	Duncan/IBanez	N	H	A	A	Warm sound and rich sustain.
N/A	Duncan/IBanez	B	H	C	C	Powerful sound with quick attack.
<b>Seymour Duncan® BASSLINES™ PICKUPS (INDIVIDUAL SEYMOUR DUNCAN® PICKUPS ARE NOT SOLD BY IBANEZ)</b>						
N/A	BASSLINES™ Ibanez	N	H	A	A	High output with lots of clarity and high-gain punch.
N/A	DYNAMIC 4	B	H	C	C	All tone with rich midrange and added highs.
N/A	Duncan/IBanez	N	H	A	A	Powerful pickup, unusual high end.
N/A	Duncan/IBanez	B	H	A	A	Single speed of attack.
<b>EMG®</b>						

# Finishes

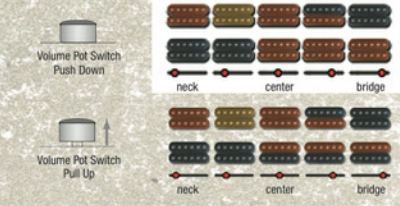


# Pickups

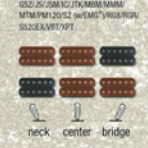
## S-S-H (w/True Duo Bucker)



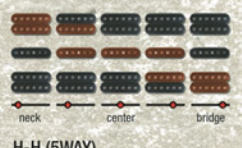
## H-H (w/True Duo Bucker)



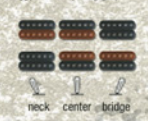
## H-H (3WAY)



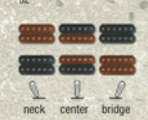
## H-S-H



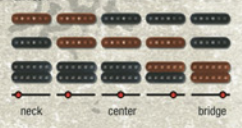
## H-H (3WAY)



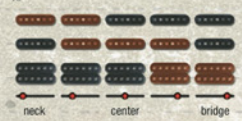
## H-H (3WAY)



## S-S-H



## S-S-H





# ARTIST ROSTER

## GUITARS

**Keth Accam** Bad Acid Trip USA  
**Toshi Abasi** Reflux USA  
**Dave Adams** The Dream USA  
**Edward Alphonso** Star Academy France  
**Russell Ali** Izanazi USA  
**Lola Alvarez** MIMETA DE CAMARONIA USA  
**Chris Anderson** Through The Eyes Of The Dead USA  
**Fabian Arceyes** Kerfuffle Chile  
**Yusef Arreola** Chile  
**Lance Army** Fly USA  
**Chris Arz** Chile  
**Crash!B! Amagada** Alejandro Sika Power Quartet Chile  
**Mark Bandrow** Shredz Fall USA  
**Rob Balducci** USA  
**Ball** Bangkok Thailand  
**Tony Balsamo** USA  
**Yasser Basilio** Farewell Chile  
**Patrizia Kirk Behunick** Czech Republic  
**Steve Bello** Steve Bello Band USA  
**Ricky Belloni** New Italy Italy  
**Bombay** Pas Indonesia  
**Chrisy Benga** (he'd) planet earth USA  
**George Benton** USA  
**Luis H. Bettencourt** Portugal  
**Paul Bettencourt** Portugal  
**Roni Bradman** Job For A Crazy Guy USA  
**Qad Altaimov** Boomerang Thailand  
**Chris Broderick** Newsmagazine Power USA  
**Bronson** Manoverland USA  
**Norman Brown** Auggit Bams Red USA  
**Bill Brubaker** The More I See UK  
**Chris Butt** UK  
**Chris Caffery** Per Germany  
**Chris Cannizo** Michael Bolton USA  
**Nolan Carpenter** Dennis USA  
**Don Carter** The Lucky 13s UK  
**Mike Cass** LinXpzn UK  
**Adam Cassidy** UK  
**Dino Cazares** Aereo USA  
**Catarino** Eln e le Strine Teste Italy  
**Carla Chambers** USA  
**Sebastian Chaput** ImDiscouraged Canada  
**Paul Romaine Charnesomachchi** Thailand  
**Pascal Chizeaux** P.M.T., The Memorial Tribute Switzerland  
**Arthur Chisholm** Main Priest / Big Mountain USA  
**Chris Chyng** Chyng Indonesia  
**Alexandre Chutkan** Azzavon Thailand  
**Alan Collin-Trecante** Agnew / Leafcutter Europe  
**Claudio Cordero** Mainz Chile  
**Frank Cuomo** USA  
**Jim Daniels** KidiAyan Canada  
**Scott Desnoes** Bleeding Through USA  
**Jim Dineen** Hiper / Victory Fall USA  
**Todd Droguchi** Linkin Park USA  
**Brad Dross** ZEBZ France  
**Mohamed Drouich** France  
**Mike Dwyff** Ignorant UK  
**Andres Dyer** Portugal  
**Dominic** The Chronicles of Israel Canada  
**Doug Dopper** Dogger Inc. USA  
**Felix Drogen** Paradise USA  
**Mandy Ferber** USA  
**Jim Fennerty** Jim Fennerty Group USA  
**Georges Floride** Jall'Arc France  
**David Franston** Division of Laura Lee Sweden  
**Marty Friedman** Japan  
**Koichi Fukui** Star-X USA  
**Robb Furze** USA  
**Fuzz** Rika / Deep Banana Blackout USA  
**Fer Gabe** PWC UK  
**Fabian Galland** Billy Cobham / Apts/Movera Denmark  
**Adriel Garcia** Jose Condit France  
**Robert Gerhardt** Joe Gelhardt's Band Germany  
**Ricky George** Finlande USA  
**Paul Gort** Race X USA  
**Chad I Gensburg** OXY USA  
**Juan Carlos Jimenez Gomez** MLLJ Spain  
**Mark Good** From Front To Last Phoenix Romania  
**Craig Gram** USA  
**Gravy** Muziknoid USA  
**Roby Grazzini** Backstage USA  
**Jon Grasley** Sweden  
**Tony Hagan** Muthagang Sweden  
**Marlin Hagstrom** Germany USA  
**Jason Hanson** Germany USA  
**Paul Hanson** HeadChested USA  
**Head** All That Remains USA  
**Ol Herbert** Sweden  
**Kristian Homansson** Sweden  
**Tony & Hermandez** Sweden  
**Colin Hordley** St. Mykica Chile  
**Hiro** Head Phonen Project Japan  
**Walter Hoffman** USA  
**Deater Horton** The Offspring USA  
**Steve Holt** 80's Chicago USA  
**Transil "Henry" Holzer** Wily Man Norway  
**Kessler Hus** SEAP/PM Taiwan  
**Bill Hudson** Colorado USA  
**Andy Jackson** Brazil / Emperor Norway  
**Jimmy Jamison** Hill Rod Circuit USA  
**Bane Jelenc** Serbia  
**Rob Johnson** Macjuchlo 9 USA  
**Kanaka** ONMOJO Japan  
**Ido Kazuharu** YAMA-ARASHI Japan  
**Vladimir Khorylin** "Black" Russia  
**Kirk Kraljic** Drenar Switzerland  
**Sean Kipe** Daria Bronda USA  
**John Kim** Drenar USA  
**Mitsuo Kojima** Japan  
**Kirk Kraljic** Drenar USA  
**Chen Chiao Koussayran** Thailand  
**Nikolay Kotov** Russia  
**Eric Kraemer** Sweden USA  
**John LaMacchia** Canada USA  
**Igor Lapuhin** Naga Steel Russia

**Mike Laurino** USA  
**Bertram Lechuga** USA  
**Geay Lenora** USA  
**Fabrizio Leo** USA  
**Ryan Lepp** USA  
**Pete Lesperance** USA  
**Eugeny Levin** Harmon Scream / Fair Ground Canada  
**Jan Lindvall** Reza Russia  
**Joel Linnemann** Dragonfly USA  
**Henri Loeffel** M.S. France  
**Juan Pablo Lopez** Venezuela  
**Luigi** Broken Party USA  
**Through The Eyes Of The Dead** USA  
**MAGO DE OZ** Spain  
**Diego Lopez** Chile  
**Antoine Lussier** Im Glorioso Canada  
**John Lyons** Sweden  
**Paul Mackenzie** Australia  
**Thailand** Thailand  
**Chomp Eddie Makaranon** Thailand  
**Dominic Mainstrom** UK  
**David Manning** All Scott / Pharaohs and the Brass USA  
**Teremo Marlynsara** Finland  
**Head Phonen Project** USA  
**A Different Set** USA  
**Tarver Marsh** USA  
**Andy Martin** USA  
**Paul McGrath** USA  
**James McHenry** USA  
**Steve Mickey** USA  
**Standard 80's / Rio Bravo** USA  
**Pat Metheny** USA  
**Steve Micozewski** USA  
**Kyzaart Music** USA  
**Larry Mitchell** USA  
**Mike** USA  
**Kali Szeban** Thailand  
**MUNTARON** Japan  
**Yasushi Muratori** USA  
**Michael Musch** USA  
**Mike Musick** USA  
**Chris Muzler** Switzerland  
**Armando Naves** Portugal  
**Kristian Nemanic** The Offspring USA  
**Neon** USA  
**OGA** YAMA-ARASHI Japan  
**Frank Okonon** Finland  
**Magnus Olsson** Sweden  
**Ramon Ortiz** Arku, USA  
**Kevin Palmer** USA  
**Amly Laine** USA  
**David Gal** Thailand  
**Evano Bion** Canada  
**Dennis** USA  
**Paul Patterson** USA  
**Parke** USA  
**Ben Parrino** USA  
**Chris Pappas** USA  
**Pay** Indonesia  
**Shelby Percia Burns / DU Buo** / Tangerine Dream / Westche USA  
**Angelo Perattini** USA  
**Diago Pineda** Spain  
**Chris Popov** USA  
**Ricky Portera** USA  
**Audino Rains** USA  
**Luigi Dalla Italy** USA  
**Shane Rains** USA  
**Josh Rand** USA  
**Paul Raymond** USA  
**Orion** USA  
**Paul Reed** Shirley Hell / Liberty / Billy Daniels / B. Daniels UK  
**SLIPKNOT** USA  
**Steve Richards** USA  
**Christophe Rime** USA  
**Deja Woods Sells** USA  
**Yannick Robert** France  
**Robert Roberts** USA  
**ARLESS** Spain  
**Robert R. Rodrigo** USA  
**Roberto Lopez-Lopez** USA  
**Franco Rojas** Chile  
**Jose Rojas** Chile  
**Igor Romanov** Alisa, Russia  
**Rafael Rosado** Rafael Rosado / Jan en Eric Jansen, Jan Jansen, Jan Jansen USA  
**Tin Roth** USA  
**Dea Salsung Ramongkorn** Thailand  
**Heriberto Salza** USA  
**John Sals** USA  
**Eric Sand** USA  
**Joe Santani** USA  
**Satyr** Satyricon Norway  
**John Seinfeld** USA  
**Arthur Seay** USA  
**Mike Shindwa** USA  
**Doug Sibley** USA  
**Adriano Sika** Alejandro Sika Power Quartet Chile  
**Janislaw Smitana** Poland  
**Chris Smerdel** Germany  
**Chris Stadler** Switzerland  
**Fabio Sippic** Blackout USA  
**Bary Spick** Three Days Grace Canada  
**Muhammad Suzeem** Theocracy Germany  
**Therapy?** Germany  
**Tommy Svila** Purified In Blood Norway  
**Shinji Takahashi** Japan  
**Corey Taylor** Stone Sour USA  
**Daniel Tees** Daniel Tees Project Argentina  
**Jim Tetz** Alimony USA  
**Thick Mession** Slipknot USA  
**Therapy?** Germany  
**Mark Gemme Thelata** The Misfits / Micky UK  
**Andy Timmons** Olivia Newton-John / Lover Lies USA  
**Tommy** Thailand  
**Gisle Torvik** Drogenetica Norway  
**Chris Tomlin** USA  
**Greg Trammell** USA  
**Tony Truitt** USA  
**Greg Tubbs** Multigang USA  
**Warzap** Theatrical USA  
**Scott Ueda** Seven Stripes USA  
**Dave Ulrich** USA  
**Steve Van** USA  
**Van** D'Funk USA  
**Vincent Vercaigne** Amantia / Chica France  
**Vlad** Enova Bion Canada  
**Victor Vlogannon** Between The Buried And Me USA  
**Evertan Widman** IT Brazil  
**John Williams** December / Zane USA  
**Dave Weiner** Steve Van USA  
**Bob Weir** RatDog / The Dead USA

**Michael Jackson** USA  
**Scott Wilson** Demolition USA  
**Wesley** USA  
**Hikaru Yoshida** ex. Dead / PUGS Japan  
**A Yam** Aerial Camera Italy  
**Luciano Zadro** Italy  
**Paolo Zebusso** Russia  
**Rob Zeman** USA

## BASSES

**Stig Skog Anderson** USA  
**Uta** USA  
**Uta** USA  
**Richard "RIK" Atzeni** USA  
**Pepe Bob** OFURUKO Spain  
**Shawn Bonner** Kalamazoo USA  
**Gene Benton** Decade USA  
**Chris Black** USA  
**Alan Blackstone** All Scott / Maddy / The Bloods USA  
**Troy Blech** Imf Emery Canada  
**Nealon Bratton** The Backyard Bratton UK  
**Paul Bruce** UK  
**Stephen Brunzel** Sweden  
**Paul Bugler** LinXpzn UK  
**Raymond Burgin** P.M.T. - Pre Memorial Tribute Sweden  
**Tony Sator** Six Feet Under USA  
**Calista** USA  
**Wesley** USA  
**Creature** Decade USA  
**Kris "Bear" Curtis** USA  
**Arch Emery** Sweden  
**Mike D'Antonio** Kalamazoo USA  
**Charles Davies** USA  
**Matt Davis** OXY USA  
**Barry Deary** Harmon Scream Canada  
**Leonardo Felacchi** USA  
**Mark Fisher** USA  
**Manoia Gale** USA  
**Paul Gray** Slipknot USA  
**Roland Grier** Marcus Roberts USA  
**Takahisa Hayakawa** MADO DE OZ Japan  
**Paula Smita Hironaka** Musing Surf Thailand  
**Tsuyoshi Ishikawa** R.T.P. (ex. Drug Store) Japan  
**Paar Benson** USA  
**Hans J. Kullback** Music Academy International France  
**Brent "Frank" Jensen** Big Man Germany  
**Percy Jones** The Offspring USA  
**Greg K** USA  
**Clark Kaye** USA  
**Joe Keyser** Sweden USA  
**Kang** Love Gains Thailand  
**Marcus Kossler** Fall 4 Germany  
**Dan Kurtz** The New Day USA  
**Fernando Lazzarini** USA  
**Fernando Lazzarini** Pink Floyd Poland  
**Luigi** Street Funk Artists Thailand  
**Luis Miguel Navalon** Spain  
**Spide** USA  
**Mike O'Connell** USA  
**John Oskovic** Through The Eyes Of The Dead USA  
**UK** USA  
**Rikku Pilgott** USA  
**Joe Piro** USA  
**Paul Romano** USA  
**Rozzani** USA  
**James Sagan** USA  
**Calico Schneider** USA  
**Arja Seiffert** USA  
**Spide** USA  
**Takashi** USA  
**Paul Terrence** USA  
**UMBO** Paul Young AUSTRALIA  
**Mano Valente** Nobby Portugal  
**James Vargas** USA  
**Grady Veasley** USA  
**Paulo Vilela** USA  
**Billy Villegas** Outstanding LUS E. AUTE Spain  
**Pete Wray** URO / Wraypet UK  
**Rock Wray** UK  
**Gary Willis** Tech USA  
**John Williams** Bleeding Through USA  
**Akroni Yamada** USA  
**Mark Young** USA  
**Marcio Zoli Zetali** Lausca Col Italy  
**Zoltan** Five Finger Death Punch USA

## ACOUSTIC GUITARS

**Anthony Cosmo** USA  
**Mark D'Amico** Hydrovia USA  
**Michael Engiger** Incubus USA  
**Ron** JEM / Dogfish USA  
**Kai** Endbringer Thailand  
**Chris** Canada  
**David Lowery** Cracker / Campen Van Bestwestern USA  
**Main** Calista Sweden  
**Malyan** Fearful Blue Canada  
**Edwin McCall** Incubus USA  
**Madron** JEM / Dogfish USA  
**Phillips Chan** Producer / Engineer / Rock Violins / Wambica France  
**Torben** Spain  
**Chema Vilech** Spain  
**Bryad Wald** Three Days Grace Canada  
**Edy Zay** USA

## ELECTRONICS

**Michael Anott** Arch Emery Sweden  
**Pete Anderson** USA  
**John Badinger** Nashville Spirit / Session USA  
**Adam Dubsiewicz** Kalamazoo England USA  
**Julian Freed** USA  
**Andy S** Loser / Rick Zeman USA  
**Jason Hook** Hilary Duff USA  
**Adrian Long** UK  
**Mike Sarkygan** USA  
**Vincent Vercaigne** USA  
**Mark Scannell** Vertical Horizon USA  
**Wes Scott** The Bruce Springsteen USA  
**Alex Scheinik** Instrument / Harp / Stratos Onchestra USA  
**Joe Street** Kalamazoo USA  
**TAK-E** SHAKU ABETS Japan



ALL COLORS SHOWN ARE AS CLOSE AS FOUR-COLOR PRINTING WILL ALLOW. ALL SPECIFICATIONS SUBJECT TO CHANGE WITHOUT NOTICE.  
 ©2007. PRINTED IN JAPAN. FE857585