

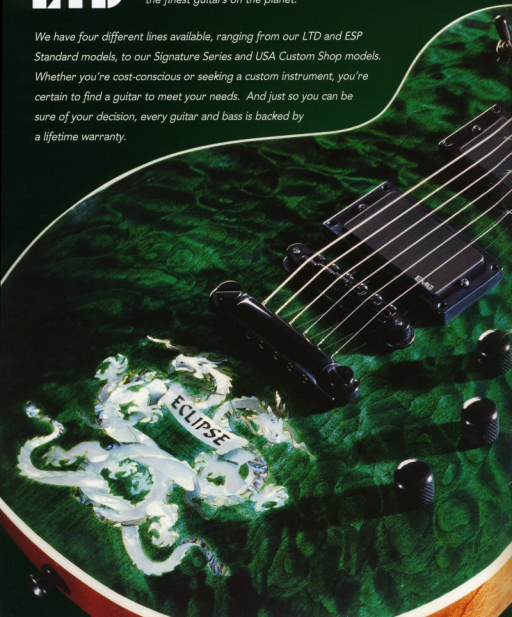
**ESP**  
1999

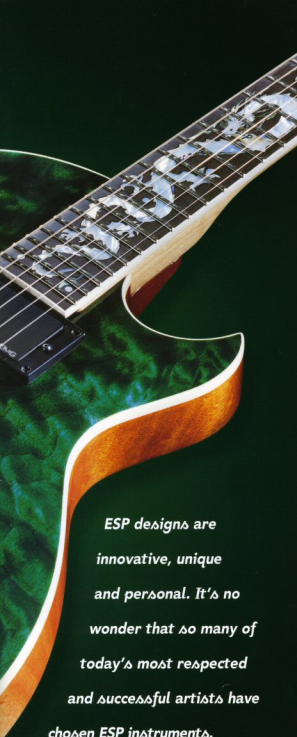
LTD., ESP, SIGNATURE SERIES & USA CUSTOM Electric Guitars & Bases

**ESP**  
*1999*  
**LTD**

*Every guitarist, from beginner to veteran, knows that ultimate moment when it just feels right. You can't put it into words and nothing quite compares. That's why we take painstaking care in every guitar we build. From the selection of woods, to the quality components, to our handbuilt craftsmanship, we have never lost our vision to provide you the finest guitars on the planet.*

*We have four different lines available, ranging from our LTD and ESP Standard models, to our Signature Series and USA Custom Shop models. Whether you're cost-conscious or seeking a custom instrument, you're certain to find a guitar to meet your needs. And just so you can be sure of your decision, every guitar and bass is backed by a lifetime warranty.*





ESP designs are innovative, unique and personal. It's no wonder that so many of today's most respected and successful artists have chosen ESP instruments.

## LTD

H-100	4
H-200	4
H-300	4
MH-100	5
MH-200	5
MH-300	5
M-100	6
M-200	6
M-250	6
M-300	7
M-350	7
EX-200	8
EX-300	8
RS-200	8
V-250	9
F-204 B $\Delta\Delta\Delta$	9
F-205 B $\Delta\Delta\Delta$	9
B-104 B $\Delta\Delta\Delta$	10
B-105 B $\Delta\Delta\Delta$	10
B-204 B $\Delta\Delta\Delta$	10
B-205 B $\Delta\Delta\Delta$	11
B-304 B $\Delta\Delta\Delta$	11
B-305 B $\Delta\Delta\Delta$	11

## ESP STANDARD MODELS

Eclipse	12
Eclipse w/ Floyd Rose	12
Eclipse Arch-Top	12
Eclipse Semi-Acoustic	13
Viper	14
Horizon	14
M-II	15
M-III	15
EXP	15
Vintage + S	16
Vintage + T	16
Ultra Tone	16
B-1 B $\Delta\Delta\Delta$	17
J-4 B $\Delta\Delta\Delta$	17
J-5 B $\Delta\Delta\Delta$	17

## SIGNATURE SERIES

James Hetfield	18
Kirk Hammett	19
Jeff Hanneman	20
Stephen Carpenter	20
Low G	21
George Lynch	22
Ron Wood	23
Bruce Kulick	23

## USA CUSTOM

Horizon Custom	24
M-III Custom	24
Eclipse Custom	24
Extreme Series (MX-II, MX-III)	25
Custom Shop	26
Custom Order Form	27
Color Chart	Back Cover



Michael Pelletier  
Kilgore

Mike Kennedy  
Vision of Disorder



### MH-100

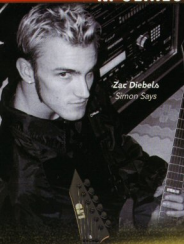
<b>CONSTRUCTION</b>	Bolt-on
<b>BODY</b>	Basswood
<b>NECK / FINGERBOARD</b>	Maple / Rosewood
<b>INLAYS</b>	Dots
<b>HARDWARE</b>	Chrome
<b>BRIDGE</b>	Floyd Rose Licensed
<b>BINDING</b>	None
<b>FRETS</b>	24 XJ
<b>PICKUPS / ELECTRONICS</b>	2-Hum LTD
<b>STANDARD COLORS</b>	Black Grey Satin Metallic Red Electric Blue

### MH-200

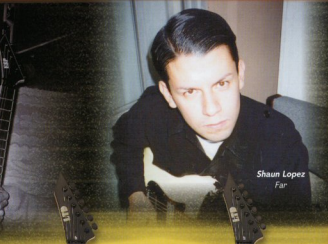
<b>CONSTRUCTION</b>	Bolt-on
<b>BODY</b>	Ash
<b>NECK / FINGERBOARD</b>	Maple / Rosewood
<b>INLAYS</b>	Blocks
<b>HARDWARE</b>	Black
<b>BRIDGE</b>	Floyd Rose Licensed
<b>BINDING</b>	Neck: White / Body: Natural
<b>FRETS</b>	24 XJ
<b>PICKUPS / ELECTRONICS</b>	2-Hum Duncan Design
<b>STANDARD COLORS</b>	See-thru Black See-thru Black Cherry See-thru Aqua

### MH-300

<b>CONSTRUCTION</b>	Neck-Thru-Body
<b>BODY</b>	Mahogany w/ Figured Maple Top
<b>NECK / FINGERBOARD</b>	Mahogany / Rosewood
<b>INLAYS</b>	Blocks
<b>HARDWARE</b>	Black
<b>BRIDGE</b>	Floyd Rose Licensed
<b>BINDING</b>	Neck: White / Body: Natural
<b>FRETS</b>	24 XJ
<b>PICKUPS / ELECTRONICS</b>	2-Hum EMG HZ
<b>STANDARD COLORS</b>	See-thru Black See-thru Black Cherry See-thru Aqua



Zac Diablels  
Simon Says



Shaun Lopez  
Far



M-100



M-200



M-250

<b>CONSTRUCTION</b>	Bolt-on
<b>BODY</b>	Basswood
<b>NECK / FINGERBOARD</b>	Maple / Rosewood
<b>INLAYS</b>	Dots
<b>HARDWARE</b>	Black
<b>BRIDGE</b>	Floyd Rose Licensed
<b>BINDING</b>	None
<b>FRETS</b>	24 XJ
<b>PICKUPS / ELECTRONICS</b>	2-hum LTD
<b>STANDARD COLORS</b>	Black Gray Satin Metallic Red Electric Blue

<b>CONSTRUCTION</b>	Bolt-on
<b>BODY</b>	Basswood
<b>NECK / FINGERBOARD</b>	Maple / Rosewood
<b>INLAYS</b>	Arrowheads
<b>HARDWARE</b>	Black
<b>BRIDGE</b>	Floyd Rose Licensed
<b>BINDING</b>	None
<b>FRETS</b>	24 XJ
<b>PICKUPS / ELECTRONICS</b>	2-hum Duncan Design
<b>STANDARD COLORS</b>	Black Gray Satin Midnight Purple Gunmetal Blue

<b>CONSTRUCTION</b>	Bolt-on
<b>BODY</b>	Basswood
<b>NECK / FINGERBOARD</b>	Maple / Rosewood
<b>INLAYS</b>	Arrowheads
<b>HARDWARE</b>	Black
<b>BRIDGE</b>	Floyd Rose Licensed
<b>BINDING</b>	None
<b>FRETS</b>	24 XJ
<b>PICKUPS / ELECTRONICS</b>	H/S/H Duncan Design
<b>STANDARD COLORS</b>	Black Gray Satin Midnight Purple Gunmetal Blue



Low G

Richard Z  
Rammstein



**M-300**

<b>CONSTRUCTION</b>	<i>Neck-Thru-Body</i>
<b>BODY</b>	<i>Mahogany w/ Figured Maple Top</i>
<b>NECK / FINGERBOARD</b>	<i>Mahogany / Rosewood</i>
<b>INLAYS</b>	<i>Arrowheads</i>
<b>HARDWARE</b>	<i>Black</i>
<b>BRIDGE</b>	<i>Floyd Rose Licensed</i>
<b>BINDING</b>	<i>Neck: White</i>
<b>FRETS</b>	<i>24 XJ</i>
<b>PICKUPS / ELECTRONICS</b>	<i>2-Aut EMG HZ</i>
<b>STANDARD COLORS</b>	<i>See-thru Black See-thru Black Cherry See-thru Aqua</i>

**M-350**

<b>CONSTRUCTION</b>	<i>Neck-Thru-Body</i>
<b>BODY</b>	<i>Mahogany w/ Figured Maple Top</i>
<b>NECK / FINGERBOARD</b>	<i>Mahogany / Rosewood</i>
<b>INLAYS</b>	<i>Arrowheads</i>
<b>HARDWARE</b>	<i>Black</i>
<b>BRIDGE</b>	<i>Floyd Rose Licensed</i>
<b>BINDING</b>	<i>Neck: White</i>
<b>FRETS</b>	<i>24 XJ</i>
<b>PICKUPS / ELECTRONICS</b>	<i>H/S/H EMG HZ</i>
<b>STANDARD COLORS</b>	<i>See-thru Black See-thru Black Cherry See-thru Aqua</i>

# LTD EX SERIES, RS-200, V-250



**James Hetfield**  
Metallica



**Glenn Hughes**



**EX-200**



**EX-300**



**RS-200**

<b>CONSTRUCTION</b>	Bolt-on
<b>BODY</b>	Mahogany
<b>NECK / FINGERBOARD</b>	Maple / Rosewood
<b>INLAYS</b>	Dots
<b>HARDWARE</b>	Black
<b>BRIDGE</b>	Tune-o-matic
<b>BINDING</b>	None
<b>FRETS</b>	22 XJ
<b>PICKUPS / ELECTRONICS</b>	2-hum Duncan Design
<b>STANDARD COLORS</b>	Black Gray Satin Midnight Purple Gunmetal Blue

<b>CONSTRUCTION</b>	Set-neck
<b>BODY</b>	Mahogany
<b>NECK / FINGERBOARD</b>	Mahogany / Rosewood
<b>INLAYS</b>	Dots
<b>HARDWARE</b>	Black
<b>BRIDGE</b>	Floyd Rose Licensed
<b>BINDING</b>	None
<b>FRETS</b>	22 XJ
<b>PICKUPS / ELECTRONICS</b>	2-hum EMG HZ
<b>STANDARD COLORS</b>	Black Gray Satin Midnight Purple Gunmetal Blue

<b>CONSTRUCTION</b>	Bolt-on
<b>BODY</b>	Mahogany
<b>NECK / FINGERBOARD</b>	Maple / Rosewood
<b>INLAYS</b>	Arrowheads
<b>HARDWARE</b>	Black
<b>BRIDGE</b>	Floyd Rose Licensed
<b>BINDING</b>	Neck: White
<b>FRETS</b>	24 XJ
<b>PICKUPS / ELECTRONICS</b>	2-hum EMG HZ
<b>STANDARD COLORS</b>	Black Gray Satin Midnight Purple Gunmetal Blue





**Carmine Rojas**  
Rod Stewart, David Bowie

**Victor Bailey**  
Weather Report, Joe Zawinul



**B-104**

<b>CONSTRUCTION</b>	Bolt-on
<b>BODY</b>	Basswood
<b>NECK / FINGERBOARD</b>	Maple / Rosewood
<b>INLAYS</b>	Dots
<b>HARDWARE</b>	Chrome
<b>BRIDGE</b>	4 String Deluxe Bass
<b>BINDING</b>	None
<b>FRETS</b>	24 XJ
<b>PICKUPS / ELECTRONICS</b>	2 LTD Scapbar w/Mid Control
<b>STANDARD COLORS</b>	Black Gray Satin Metallic Red Electric Blue

**B-105**

<b>CONSTRUCTION</b>	Bolt-on
<b>BODY</b>	Basswood
<b>NECK / FINGERBOARD</b>	Maple / Rosewood
<b>INLAYS</b>	Dots
<b>HARDWARE</b>	Chrome
<b>BRIDGE</b>	5 String Deluxe Bass
<b>BINDING</b>	None
<b>FRETS</b>	24 XJ
<b>PICKUPS / ELECTRONICS</b>	2 LTD Scapbar w/Mid Control
<b>STANDARD COLORS</b>	Black Gray Satin Metallic Red Electric Blue

**B-204**

<b>CONSTRUCTION</b>	Bolt-on
<b>BODY</b>	Mahogany
<b>NECK / FINGERBOARD</b>	Maple / Rosewood
<b>INLAYS</b>	Dots
<b>HARDWARE</b>	Black
<b>BRIDGE</b>	4 String Deluxe Bass
<b>BINDING</b>	None
<b>FRETS</b>	24 XJ
<b>PICKUPS / ELECTRONICS</b>	2 EMG HZ w/3-band Active EQ
<b>STANDARD COLORS</b>	Sea-thru Black Sea-thru Red Natural Gloss

Tom Barney  
Steely Dan, SNL Band

Lincoln Goines



B-205

<b>CONSTRUCTION</b>	<i>Bolt-on</i>
<b>BODY</b>	<i>Mahogany</i>
<b>NECK / FINGERBOARD</b>	<i>Maple / Rosewood</i>
<b>INLAYS</b>	<i>Dots</i>
<b>HARDWARE</b>	<i>Black</i>
<b>BRIDGE</b>	<i>5 String Deluxe Bass</i>
<b>BINDING</b>	<i>None</i>
<b>FRETS</b>	<i>24 XJ</i>
<b>PICKUPS / ELECTRONICS</b>	<i>2 EMG HZ w/3-band Active EQ</i>
<b>STANDARD COLORS</b>	<i>See-thru Black See-thru Red Natural Gloss</i>



B-304

<b>CONSTRUCTION</b>	<i>Neck-Thru-Body</i>
<b>BODY</b>	<i>Mahogany w/figured Maple Top</i>
<b>NECK / FINGERBOARD</b>	<i>Maple / Rosewood</i>
<b>INLAYS</b>	<i>Dots</i>
<b>HARDWARE</b>	<i>Black</i>
<b>BRIDGE</b>	<i>4 String Deluxe Bass</i>
<b>BINDING</b>	<i>None</i>
<b>FRETS</b>	<i>24 XJ</i>
<b>PICKUPS / ELECTRONICS</b>	<i>2 EMG HZ w/3-band Active EQ</i>
<b>STANDARD COLORS</b>	<i>See-thru Black See-thru Black Cherry 2-Tone Sunburst</i>



B-305

<b>CONSTRUCTION</b>	<i>Neck-Thru-Body</i>
<b>BODY</b>	<i>Mahogany w/figured Maple Top</i>
<b>NECK / FINGERBOARD</b>	<i>Maple / Rosewood</i>
<b>INLAYS</b>	<i>Dots</i>
<b>HARDWARE</b>	<i>Black</i>
<b>BRIDGE</b>	<i>5 String Deluxe Bass</i>
<b>BINDING</b>	<i>None</i>
<b>FRETS</b>	<i>24 XJ</i>
<b>PICKUPS / ELECTRONICS</b>	<i>2 EMG HZ w/3-band Active EQ</i>
<b>STANDARD COLORS</b>	<i>See-thru Black See-thru Black Cherry 2-Tone Sunburst</i>

*Ahrue Luster  
Machine Head*



*Snake  
Steinlab*



**Eclipse**

**Eclipse w/Floyd Rose**

**Eclipse Arch-Top**

<b>CONSTRUCTION</b>	<u>Bolt-on</u>
<b>BODY</b>	Mahogany
<b>NECK / FINGERBOARD</b>	Maple / Rosewood
<b>INLETS</b>	Duo
<b>HARDWARE</b>	Chrome
<b>BRIDGE</b>	Tune-o-matic
<b>BINDING</b>	Neck: White
<b>FRETS</b>	24 XJ
<b>PICKUPS / ELECTRONICS</b>	2-hum ESP LH-200 w/Coil Split
<b>STANDARD COLORS</b>	Black Metallic Gold See-thru Blue See-thru Green See-thru Purple See-thru Red

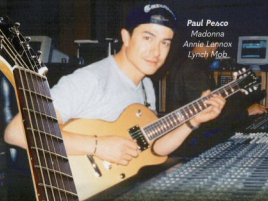
<b>CONSTRUCTION</b>	<u>Bolt-on</u>
<b>BODY</b>	Mahogany
<b>NECK / FINGERBOARD</b>	Maple / Rosewood
<b>INLETS</b>	Duo
<b>HARDWARE</b>	Black
<b>BRIDGE</b>	Original Floyd Rose
<b>BINDING</b>	Neck: White
<b>FRETS</b>	24 XJ
<b>PICKUPS / ELECTRONICS</b>	2-hum ESP LH-200 w/Coil Split
<b>STANDARD COLORS</b>	Black Metallic Gold See-thru Blue See-thru Green See-thru Purple See-thru Red

<b>CONSTRUCTION</b>	<u>Bolt-on / Semi-Hollow</u>
<b>BODY</b>	Mahogany
<b>NECK / FINGERBOARD</b>	Maple / Rosewood
<b>INLETS</b>	Flags
<b>HARDWARE</b>	Chrome
<b>BRIDGE</b>	Tune-o-matic
<b>BINDING</b>	Neck: White
<b>FRETS</b>	22 XJ
<b>PICKUPS / ELECTRONICS</b>	2-hum ESP LH-200
<b>STANDARD COLORS</b>	Black Metallic Gold See-thru Green See-thru Purple See-thru Red

Specifications



**K.K. Downing**  
Judas Priest



**Paul Recco**  
Madonna  
Annie Lennox  
Lynch Mob

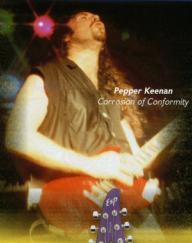


**Eclipse Semi-Acoustic**

<b>CONSTRUCTION</b>	Bolt-on / Semi-Hollow
<b>BODY</b>	Mahogany w/figured Maple Top
<b>NECK / FINGERBOARD</b>	Maple / Rosewood
<b>INLAYS</b>	Dot
<b>HARDWARE</b>	Chrome
<b>BRIDGE</b>	Acoustic Guitar
<b>BINDING</b>	Neck & Body: White
<b>PICKUPS / ELECTRONICS</b>	Piezo-Electric w/Active EQ
<b>STANDARD COLORS</b>	Honey Sunburst See-thru Black See-thru Blue See-thru Green See-thru Purple See-thru Red



Chris Degarmo



Pepper Keenan  
Corrosion of Conformity



Viper

<b>CONSTRUCTION</b>	Bolt-on
<b>BODY</b>	Mahogany
<b>NECK / FINGERBOARD</b>	Maple / Rosewood
<b>INLAYS</b>	Dots
<b>HARDWARE</b>	Chrome
<b>BRIDGE</b>	Tune-o-matic
<b>BINDING</b>	Nick/White
<b>FRETS</b>	24 XJ
<b>PICKUPS / ELECTRONICS</b>	2-hum ESP LH-200
<b>STANDARD COLORS</b>	Black Metallic Gold See-thru Red Turquoise



Horizon

<b>CONSTRUCTION</b>	Bolt-on
<b>BODY</b>	Ash (Solid Colors: Alder)
<b>NECK / FINGERBOARD</b>	Maple / Rosewood
<b>INLAYS</b>	Dots
<b>HARDWARE</b>	Chrome
<b>BRIDGE</b>	Tune-o-matic
<b>BINDING</b>	Body: Natural
<b>FRETS</b>	24 XJ
<b>PICKUPS / ELECTRONICS</b>	2-hum ESP LH-200 w/Mega Switch
<b>STANDARD COLORS</b>	Black Honey Sunburst Metallic Gold See-thru Blue See-thru Green See-thru Purple See-thru Red

Woody Weatheraux  
*Corrosion of Conformity*

Page Hamilton



**M-II**

<b>CONSTRUCTION</b>	Bolt-on
<b>BODY</b>	Alder
<b>NECK / FINGERBOARD</b>	Maple / Rosewood or Maple
<b>INLAYS</b>	Dots
<b>HARDWARE</b>	Black
<b>BRIDGE</b>	Original Floyd Rose
<b>BINDING</b>	none
<b>FRETS</b>	24 XJ
<b>PICKUPS / ELECTRONICS</b>	2-hum ESP LH-200
<b>STANDARD COLORS</b>	Black Grey Satin Gunmetal Blue Metallic Purple Midnight Purple Pearl White

**M-III**

<b>CONSTRUCTION</b>	Bolt-on
<b>BODY</b>	Alder
<b>NECK / FINGERBOARD</b>	Maple / Rosewood or Maple
<b>INLAYS</b>	Dots
<b>HARDWARE</b>	Black
<b>BRIDGE</b>	Original Floyd Rose
<b>BINDING</b>	none
<b>FRETS</b>	24 XJ
<b>PICKUPS / ELECTRONICS</b>	H/S/M ESP LH-200/SH-100/LH-200
<b>STANDARD COLORS</b>	Black Grey Satin Gunmetal Blue Metallic Purple Midnight Purple Pearl White

**EXP**

<b>CONSTRUCTION</b>	Bolt-on
<b>BODY</b>	Mahogany
<b>NECK / FINGERBOARD</b>	Maple / Rosewood
<b>INLAYS</b>	Dots
<b>HARDWARE</b>	Black
<b>BRIDGE</b>	Tune-o-matic
<b>BINDING</b>	None
<b>FRETS</b>	22 XJ
<b>PICKUPS / ELECTRONICS</b>	2-hum EMG-81
<b>STANDARD COLORS</b>	Black Olympic White

Robin Zander  
Cheap Trick

Mikey Doling  
Snot



**Vintage + S**

**Vintage + T**

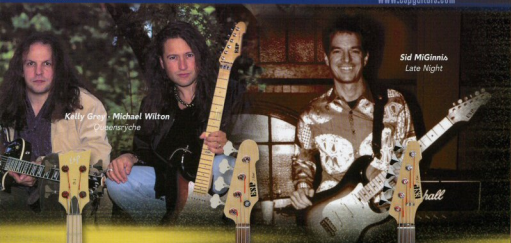
**Ultra Tone**

<b>CONSTRUCTION</b>	Bob-on
<b>BODY</b>	Ash (Solid Colors: Alder)
<b>NECK / FINGERBOARD</b>	Maple / Rosewood or Maple
<b>INLAYS</b>	Dots
<b>HARDWARE</b>	Chrome
<b>BRIDGE</b>	2-Pt. Trem w/Sperzel Tuners
<b>BINDING</b>	None
<b>FRETS</b>	22 XJ
<b>PICKUPS / ELECTRONICS</b>	3 ESP SS-120 Single Coil
<b>STANDARD COLORS</b>	2-Tone Sunburst 3-Tone Sunburst Black Gunmetal Blue Honey Sunburst Metallic Gold

<b>CONSTRUCTION</b>	Bob-on
<b>BODY</b>	Ash (Solid Colors: Alder)
<b>NECK / FINGERBOARD</b>	Maple / Rosewood or Maple
<b>INLAYS</b>	Dots
<b>HARDWARE</b>	Chrome
<b>BRIDGE</b>	Flat-mount / String-thru-body
<b>BINDING</b>	Body Top: White
<b>FRETS</b>	22 XJ
<b>PICKUPS / ELECTRONICS</b>	2 ESP TS-120 Single Coil
<b>STANDARD COLORS</b>	2-Tone Sunburst 3-Tone Sunburst Black Gunmetal Blue Honey Sunburst Metallic Gold

<b>CONSTRUCTION</b>	Bob-on
<b>BODY</b>	Alder
<b>NECK / FINGERBOARD</b>	Maple / Rosewood
<b>INLAYS</b>	Dots
<b>HARDWARE</b>	Chrome
<b>BRIDGE</b>	Tune-o-matic
<b>BINDING</b>	Nick: White
<b>FRETS</b>	22 XJ
<b>PICKUPS / ELECTRONICS</b>	3 Duncan Mini-Humbuckers w/Coil Split
<b>STANDARD COLORS</b>	3-Tone Sunburst Black Pearl White

Specifications



Kelly Grey • Michael Wilton  
*Queensrÿche*

Sid MiGinnia  
*Late Night*



## B-1 Bass

<b>CONSTRUCTION</b>	Bob-on
<b>BODY</b>	Alder
<b>NECK / FINGERBOARD</b>	Maple / Rosewood or Maple
<b>INLAITS</b>	Dots
<b>HARDWARE</b>	Black
<b>BRIDGE</b>	4-String Deluxe Bass
<b>BINDING</b>	None
<b>FRETS</b>	21 XJ
<b>PICKUPS / ELECTRONICS</b>	Passive SMB Pickup w/STC Active EQ
<b>STANDARD COLORS</b>	Black Candy Apple Red Metallic Gold Pearl White



## J-4 Bass


<b>CONSTRUCTION</b>	Bob-on
<b>BODY</b>	Ash
<b>NECK / FINGERBOARD</b>	Maple / Rosewood
<b>INLAITS</b>	Dots
<b>HARDWARE</b>	Black
<b>BRIDGE</b>	4-String Deluxe Bass
<b>BINDING</b>	None
<b>FRETS</b>	21 XJ
<b>PICKUPS / ELECTRONICS</b>	ESP PJJ-Set Single Coil
<b>STANDARD COLORS</b>	J-Tone Sunburst Black Pearl White See-thru Blue See-thru Green



## J-5 Bass

<b>CONSTRUCTION</b>	Bob-on
<b>BODY</b>	Ash
<b>NECK / FINGERBOARD</b>	Maple / Rosewood
<b>INLAITS</b>	Dots
<b>HARDWARE</b>	Black
<b>BRIDGE</b>	5-String Deluxe Bass
<b>BINDING</b>	None
<b>FRETS</b>	21 XJ
<b>PICKUPS / ELECTRONICS</b>	ESP 5-String J-Set Single Coil
<b>STANDARD COLORS</b>	J-Tone Sunburst Black Pearl White See-thru Blue See-thru Green





JH

## JH-3

CONSTRUCTION	Set-neck
BODY	Mahogany
NECK / FINGERBOARD	Maple / Rosewood
INLAYS	Custom Flags
HARDWARE	Gold
BRIDGE	Tune-o-matic
BINDING	Body & Neck: Creme
FRETS	22 XJ
PICKUPS / ELECTRONICS	2-hum EMG-81 & 60
STANDARD COLORS	Black w/ Pinstripes

LIMITED PRODUCTION MODEL



## KH-2

CONSTRUCTION	Bolt-on
BODY	Alder
NECK / FINGERBOARD	Maple / Rosewood
INLAYS	Skull & Crossbones
HARDWARE	Black
BRIDGE	Original Floyd Rose
BINDING	None
FRETS	24 XJ
PICKUPS / ELECTRONICS	2-hum EMG-81
STANDARD COLORS	Black

## KH-3

CONSTRUCTION	Bolt-on
BODY	Alder
NECK / FINGERBOARD	Maple / Rosewood
INLAYS	Skull & Spider
HARDWARE	Black
BRIDGE	Original Floyd Rose
BINDING	None
FRETS	24 XJ
PICKUPS / ELECTRONICS	2-hum EMG-81
STANDARD COLORS	Black w/ Spider Graphic

## KH-4

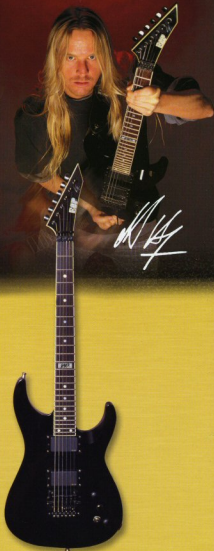
CONSTRUCTION	Neck-Thru-Body
BODY	Maple Neck-Thru, Alder Sides
NECK / FINGERBOARD	Maple / Rosewood
INLAYS	Dots
HARDWARE	Black
BRIDGE	Original Floyd Rose
BINDING	None
FRETS	24 XJ
PICKUPS / ELECTRONICS	2-hum EMG-81
STANDARD COLORS	Black



Stephen Carpenter

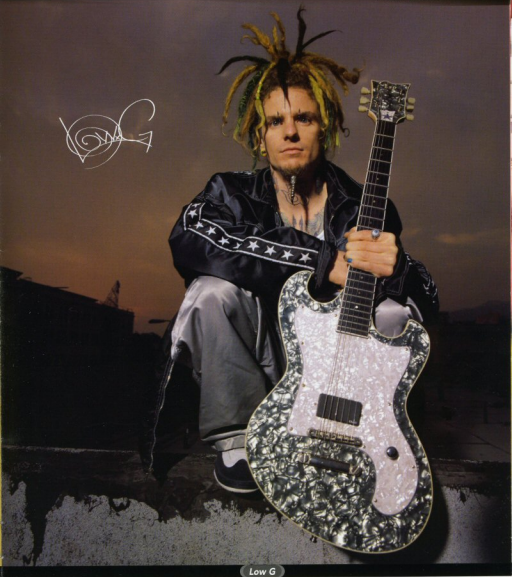
<b>CONSTRUCTION</b>	Neck-Thru-Body
<b>BODY</b>	Maple Neck-Thru, Alder Sides
<b>NECK / FINGERBOARD</b>	Maple / Ebony
<b>INLAYS</b>	None
<b>HARDWARE</b>	Chrome
<b>BRIDGE</b>	Tune-o-matic
<b>BINDING</b>	Neck: White
<b>FRETS</b>	24 XJ
<b>PICKUPS / ELECTRONICS</b>	Duncan TB-4, ESP LH-200 & SS-120
<b>STANDARD COLORS</b>	See-thru Green Snow White Sonic Blue

PICTURED ON COVER



Jeff Hanneman

<b>CONSTRUCTION</b>	Neck-Thru-Body
<b>BODY</b>	Maple Neck-Thru, Alder Sides
<b>NECK / FINGERBOARD</b>	Maple / Rosewood
<b>INLAYS</b>	Dots w/ "Slayer" Logo at 12th fret
<b>HARDWARE</b>	Black
<b>BRIDGE</b>	Kahler Pro
<b>BINDING</b>	Neck: White
<b>FRETS</b>	24 XJ
<b>PICKUPS / ELECTRONICS</b>	2-hum EMG-81 w/ SPC Control
<b>STANDARD COLORS</b>	Black



## Low G

CONSTRUCTION	Bolt-on
BODY	Alder
NECK / FINGERBOARD	Maple / Rosewood
INLAYS	Dots
HARDWARE	Chrome
BRIDGE	Tune-o-matic
BINDING	Neck & Body: White
Frets	22 XJ
PICKUPS / ELECTRONICS	EMG-81
STANDARD COLORS	Black & White Pearlloid

**Skull & Bones**

CONSTRUCTION	Bolt-on
BODY	Hand Carved Maple
NECK / FINGERBOARD	Maple / Ebony
INLAYS	Dots
HARDWARE	Black
BRIDGE	Original Floyd Rose
BINDING	None
FRETS	22 XJ
PICKUPS / ELECTRONICS	Duncan Scream'n' Demon
STANDARD COLOR	Bone

**LIMITED PRODUCTION MODEL**

*George Lynch*



**Sunburst Tiger**

**M-1 Tiger**

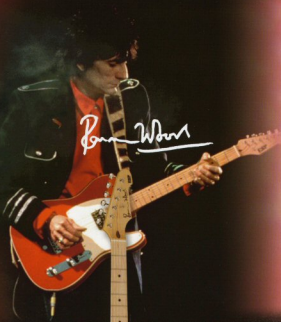
**Kamikaze**

**Skulls & Snakes**

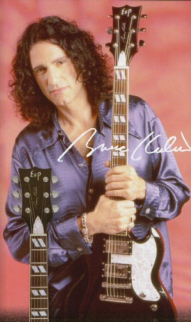
**Serpent**

**GL-56**

	Sunburst Tiger	M-1 Tiger	Kamikaze	Skulls & Snakes	Serpent	GL-56
CONSTRUCTION	Bolt-on	Bolt-on	Bolt-on	Bolt-on	Bolt-on	Bolt-on
BODY	Maple	Maple	Maple	Alder	Alder	Basswood
NECK / FINGERBOARD	Maple / Rosewood	Maple / Maple	Maple / Ebony	Maple / Rosewood	Maple / Rosewood	Maple / Maple
INLAYS	Dots	Dots	Dots	Skull & Swords	Dots	Dots
HARDWARE	Black	Black	Black	Black	Black	Chrome
BRIDGE	Original Floyd Rose	Original Floyd Rose	Original Floyd Rose	Original Floyd Rose	Original Floyd Rose	2-Pr Trem w/Special Tuners
BINDING	None	None	None	None	Head & Body: Black	None
FRETS	22 XJ	22 XJ	22 XJ	22 XJ	22 XJ	22 XJ
PICKUPS / ELECTRONICS	Duncan Scream'n' Demon, ESP SS-120	Duncan Scream'n' Demon, ESP SS-120	Duncan Scream'n' Demon, ESP SS-120	Duncan Scream'n' Demon, ESP SH-100	Duncan Scream'n' Demon, ESP SH-100	3 Duncan Classic Stacks
STANDARD COLORS	Custom Graphic	Custom Graphic	Custom Graphic	Custom Graphic	Custom Graphic	Distressed 2-Tone Sunburst



*Ron Wood*



*Bruce Kulick*



Ron Wood

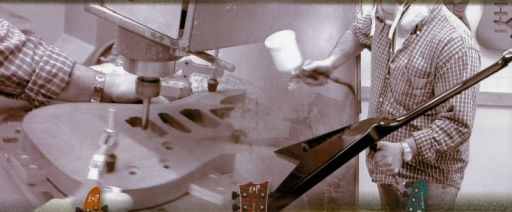
<b>CONSTRUCTION</b>	Bolt-on
<b>BODY</b>	Alder
<b>NECK / FINGERBOARD</b>	Maple / Maple
<b>INLAYS</b>	Dots
<b>HARDWARE</b>	Chrome
<b>BRIDGE</b>	Flat Mount, String-thru-body
<b>BINDING</b>	Body: White
<b>FRETS</b>	22 Normal
<b>PICKUPS / ELECTRONICS</b>	ESP TS-120 Single Coil, LH-200
<b>STANDARD COLORS</b>	Black Electric Blue Fiesta Red



Bruce Kulick

<b>CONSTRUCTION</b>	Neck-Thru-Body
<b>BODY</b>	Maple Neck-Thru, Alder Sides
<b>NECK / FINGERBOARD</b>	Maple / Rosewood
<b>INLAYS</b>	Parallelogram
<b>HARDWARE</b>	Chrome
<b>BRIDGE</b>	Tune-o-matic
<b>BINDING</b>	Fingerboard
<b>FRETS</b>	22 XJ
<b>PICKUPS / ELECTRONICS</b>	Seymour Duncan J0 & '59 (Bolt-on version available w/ ESP LH-200 Pickups)
<b>STANDARD COLORS</b>	Black

Specializations



**Horizon Custom**

<b>CONSTRUCTION</b>	<i>Bolt-on</i>
<b>BODY</b>	<i>Mahogany w/figured Maple Top</i>
<b>NECK / FINGERBOARD</b>	<i>Maple / Ebony</i>
<b>INLAYS</b>	<i>Dots</i>
<b>HARDWARE</b>	<i>Black</i>
<b>BRIDGE</b>	<i>Tune-o-matic</i>
<b>BINDING</b>	<i>None</i>
<b>FRETS</b>	<i>24 XJ</i>
<b>PICKUPS / ELECTRONICS</b>	<i>Duncan JB &amp; '59 or 2 EMG-81</i>
<b>STANDARD COLORS</b>	<i>See Below*</i>



**Eclipse Custom**

<b>CONSTRUCTION</b>	<i>Bolt-on</i>
<b>BODY</b>	<i>Mahogany w/figured Maple Top</i>
<b>NECK / FINGERBOARD</b>	<i>Maple / Ebony</i>
<b>INLAYS</b>	<i>Dots</i>
<b>HARDWARE</b>	<i>Black</i>
<b>BRIDGE</b>	<i>Tune-o-matic</i>
<b>BINDING</b>	<i>Neck &amp; Body: White</i>
<b>FRETS</b>	<i>24 XJ</i>
<b>PICKUPS / ELECTRONICS</b>	<i>2 hum EMG-81 or Duncan JB &amp; '59</i>
<b>STANDARD COLORS</b>	<i>See Below*</i>



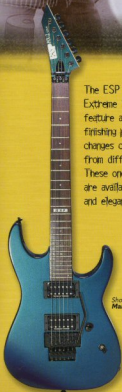
**M-III Custom**

<b>CONSTRUCTION</b>	<i>Bolt-on</i>
<b>BODY</b>	<i>Mahogany w/figured Maple Top</i>
<b>NECK / FINGERBOARD</b>	<i>Maple / Ebony</i>
<b>INLAYS</b>	<i>Dots</i>
<b>HARDWARE</b>	<i>Black</i>
<b>BRIDGE</b>	<i>Original Floyd Rose or Wilkinson VS-100</i>
<b>BINDING</b>	<i>None</i>
<b>FRETS</b>	<i>24 XJ</i>
<b>PICKUPS / ELECTRONICS</b>	<i>Duncan JB/SSL-1/'59 or EMG 81/SA/89</i>
<b>STANDARD COLORS</b>	<i>See Below*</i>

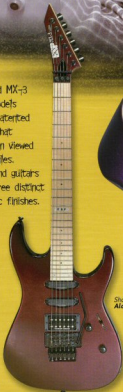
\*Amber Sunburst, See-thru Black Cherry, See-thru Aqua, Amber, Natural Satin, See-thru Blue, See-thru Green, See-thru Purple, See-thru Red



The ESP MX-2 and MX-3 Extreme Series models feature a unique patterned finishing process that changes colors when viewed from different angles. These one-of-a-kind guitars are available in three distinct and elegant metallic finishes.



Shown in the *Mariner* Finish



Shown in the *Alchemy* Finish



Shown in the *Nebula* Finish

## MX-II

CONSTRUCTION	Ball-on
BODY	Alder
NECK / FINGERBOARD	Maple / Rosewood or Maple
INLAYS	Dots
HARDWARE	Black
BRIDGE	Original Floyd Rose
BENDING	None
FRETS	24 XJ
PICKUPS / ELECTRONICS	Duncan JB & '59
STANDARD COLORS	See Below*

## MX-III

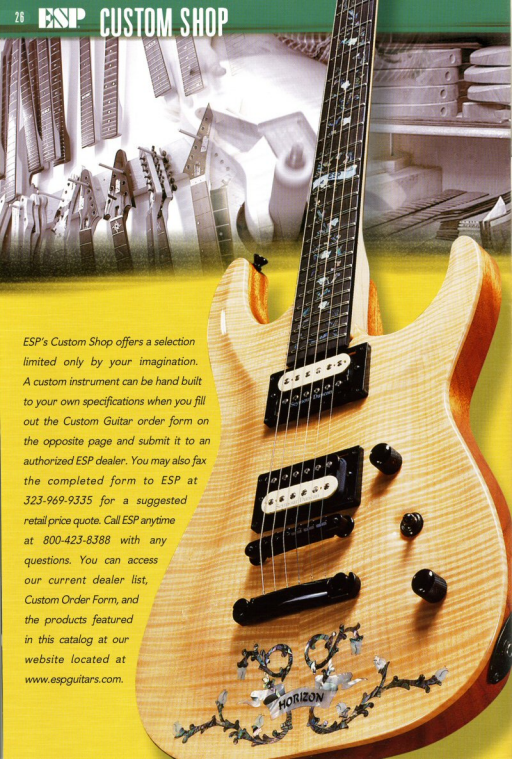
CONSTRUCTION	Ball-on
BODY	Alder
NECK / FINGERBOARD	Maple / Rosewood or Maple
INLAYS	Dots
HARDWARE	Black
BRIDGE	Original Floyd Rose
BENDING	None
FRETS	24 XJ
PICKUPS / ELECTRONICS	Duncan JB / Cool Rail / '59 or JB with 2 Cool Rails
STANDARD COLORS	See Below*

\**Mariner*: An oceanic flow of teal, blues, and purples

\**Alchemy*: A metallic fusion of gold, burgundy, and copper

\**Nebula*: A celestial meld of magentas, blues, and teal



A collage of guitar parts and a finished guitar. The top left shows various guitar necks and headstocks. The top right shows stacks of guitar bodies. The background is a bright yellow. In the foreground, a light-colored electric guitar is shown from a three-quarter view. It has two humbucker pickups, a black pickguard, and a black control plate. The guitar is decorated with a silver floral inlay on the lower body that features a banner with the word "HORIZON".

*ESP's Custom Shop offers a selection limited only by your imagination. A custom instrument can be hand built to your own specifications when you fill out the Custom Guitar order form on the opposite page and submit it to an authorized ESP dealer. You may also fax the completed form to ESP at 323-969-9335 for a suggested retail price quote. Call ESP anytime at 800-423-8388 with any questions. You can access our current dealer list, Custom Order Form, and the products featured in this catalog at our website located at [www.espguitars.com](http://www.espguitars.com).*

# ESP CUSTOM GUITAR Order Form

MINIMUM CUSTOM ORDER  
DELIVERY TIME IS 6 MONTHS

27

Please Note: ESP Custom Shop Instruments are individually hand crafted, and delivery times may vary.

Please submit this form to an authorized ESP Dealer, or FAX it to ESP at (323) 969-9335 for a suggested retail price quote. Please return your return Fax Number. If you have any questions, or would like to locate an authorized ESP Dealer call ESP toll free at 800-423-8388 or visit us online at [www.espguitars.com](http://www.espguitars.com).

DATE: \_\_\_\_\_ FAX NUMBER: \_\_\_\_\_

DEALER: \_\_\_\_\_

CUSTOMER: \_\_\_\_\_

MODEL: \_\_\_\_\_ RIGHT HANDED: \_\_\_\_\_ LEFT HANDED: \_\_\_\_\_

## Body Specifications

- BODY SHAPE:**  M-II  Horizon  Eclipse  Viper  EXP  V  Other \_\_\_\_\_
- CONSTRUCTION:**  Bolt-on  Neck-thru  Set neck
- MATERIAL:**  Alder  Ash  Maple  Mahogany  Figured Maple Top  Other \_\_\_\_\_
- BINDING:** Top:  Yes  No Back:  Yes  No
- BINDING COLOR:**  White  Creme  Black
- ROUTING:**  Back (No Pickguard)  Front (With Pickguard)
- PICKUP CONFIGURATION:** Bridge:  Hum  SC Middle:  Hum  SC Neck:  Hum  SC
- FINISH:** \_\_\_\_\_ (If not a Standard Finish, please supply sample color or artwork)

## Neck Specifications

- HEADSTOCK SHAPE:**  ESP Painted  ESP Vintage  Horizon  Eclipse  EXP  V  Other \_\_\_\_\_
- REVERSE:**  Yes  No Tilt:  Yes  No
- HEADSTOCK FINISH:**  Black  Natural  Match Body Finish  Other \_\_\_\_\_
- NECK FINISH:**  Satin  Match Body  Glass  Oil  Other \_\_\_\_\_
- FINGERBOARD:**  Maple  Rosewood  Ebony
- NUMBER OF FRETS:**  21  22  24
- FRET SIZE:**  Extra Jumbo  Medium  Normal
- INLAYS:**  Dots  None  Other \_\_\_\_\_
- "ESP" INLAY AT 12TH FRET:**  Yes  No
- FINGERBOARD END:**  Square  Round
- FINGERBOARD BINDING:**  Yes  No
- HEADSTOCK BINDING:**  Yes  No
- BINDING COLOR:**  White  Creme
- NUT:**  Locking  Bone  Graphite
- WIDTH:**  1 5/8  1 11/16  1 3/4
- NECK CONTOUR:**  Thin U  U  Extra Thin Flat  Thin Flat  Other \_\_\_\_\_
- LOGO:**  ESP  ESP Custom  ESP (Model Name)  Other \_\_\_\_\_

## Parts Specifications

- HARDWARE COLOR:**  Black  Chrome  Gold
- BRIDGE SYSTEM:**  Original Floyd Rose Locking Tremolo System  Vintage Tremolo  
 2-Point Vintage Tremolo  Non-Tremolo (Stop Tailpiece and Tune-o-matic Bridge)  
 Wilkinson VS-100  Other \_\_\_\_\_
- RECESSED TREMOLO:**  Yes  No
- PICKGUARD:**  Yes  No - Color \_\_\_\_\_
- TUNING MACHINES:**  Deluxe Gotoh  Vintage Kluson  Locking Sperzel
- INPUT JACK:**  Side of Body  Deep Dish  Other \_\_\_\_\_
- PICKUPS:**  ESP  EMG  Seymour Duncan  Other \_\_\_\_\_
- PICKUP MODEL:** Neck: \_\_\_\_\_ Middle: \_\_\_\_\_ Bridge: \_\_\_\_\_
- CONTROL PATTERN:** Specify Controls \_\_\_\_\_  
Switches or any Special Wiring \_\_\_\_\_

# ESP STANDARD COLORS for 1999



2-TONE SUNBURST



J-TONE SUNBURST



BLACK



AMBER



ELECTRIC BLUE



GREY SATIN



GUNMETAL BLUE



AMBER SUNBURST



METALLIC GOLD



METALLIC PURPLE



METALLIC RED



MIDNIGHT PURPLE



NATURAL



OLYMPIC WHITE



PEARL WHITE



SEE-THRU AQUA



SEE-THRU BLACK



SEE-THRU BLACK CHERRY



SEE-THRU BLUE



SEE-THRU GREEN



SEE-THRU PURPLE



SEE-THRU RED



SNOW WHITE



SONIC BLUE



TURQUOISE



FIESTA RED



HONEY SUNBURST

ESP would like to thank the following artists who are not pictured in this catalog:

Adam Zadel / Oppressor

Adam Kole

Alex De Rosso

Allen West / Obituary

Bill Franza / 22 Jacks

Bob Kulick

Bobby Womack

Buddy Eaton / Neverfalling

Carl Rydlund

Carlitos Puerto

Charley Drayton

Chris Beatty / Hatebreed

Chris McLennon / Saigon Kick

Courtney Sedore / Neverfalling

Craig Riker / Strung Out

Dave Donahoe / Southwind

Derrick Green / Sepultura

Doug Arms / Jester

Doug Bossi / Mustard Seeds

Eddie Rivera

Eddie Wright

Frank Vicario / Snapcase

Gabe Rosales / Lynch Mob

Gary Holt / Exodus

George Bernhardt / Mustard Seeds

Gilby Clarke

Herb White / Arkisnz Eye

Ian MacFarland / Blood for Blood

Jack Gibson / Exodus

Jake Kiley / Strung Out

Jake E. Lee

Jamie Hunting / Union

Jeff Carson Group

Jeff Irwin / Wilhaven

Jeremy Wagener / Broken Hope

Jim Stopper / Oppressor

Jimmy Crespo

Joe Stump

John Carrabe / Union

John Fattoruso / Exodus

John Salemi / Snapcase

Johnny Spampinato / NRBQ

Jonah Matranga / Far

Jorge Laboy

Josh Podolsky

Joy Basu

Kerry King / Slayer

Kevin White / In Truth

Klaus Eichstadt / Ugly Kid Joe

Lee King / King Brothers

Lincoln Gaines

Lonnie Atkinson

Lou Richards / Hatebreed

Malcolm French / Flood

Marcello Dias / Soulfly

Mark Miner / Walking Tall

Marlon Graves

Matt Hocking

Max Cavalera / Soulfly

Michael Chlasciak / Isolation Chamber

Michael Long / Drill Team

Mike Hartman

Mike Hataley

Mike Roberts / Skinlab

Mike Wallace

Neal Nagaoka

Oliver Reidel / Rammstein

Pat Calpin / Catch 22

Prashant Aswani

Randy Thomas

Raven Gysr

Ray Mitchell / Cage

Richard Thomas

Rob Flynn / Machine Head

Rob Ramos / Strung Out

Ronny Drayton

Scott Crouse / Earth Crisis

Scott Dixon / Neal McCoy Band

Scott Sargent / Skinlab

Steve Caton / Tori Amos

Steve Dellacroce / Shutdown

Steve Esquivel / Skinlab

Tim King / Oppressor

Tom Petersson / Cheap Trick

Tommy Bolan / NYC

Tony Gamble

Vince Dennis / Steel Prophet

Warren McRae / Tina Turner

The ESP Guitar Company Inc.

1536 N. Highland Ave., Hollywood CA 90028

Tel: 800-423-8388 or 323-969-0877 Fax: 323-969-9353

www.espguitars.com