

IBANEZ STRING INSTRUMENTS '85



Ibanez

It's the chance to be part of a
 once in a lifetime experience,
 a mysterious and indescribable
 awe-critical moment only with
 the energy of live band play-
 ing to a rapturously home of
 screaming fans.

**ALL FIELD SEATS
 ENTER HERE
 CANS, BOTTLES & ALCOHOLIC
 BEVERAGES PROHIBITED**

E B

ive! in concert...

Being part of the live experience,
 and sharing its magic.

It's hard to explain the thrill of live music to
 someone who's never been to a show. We're all
 used to recorded music and videos, but these me-
 diums just don't have the same kind of excite-
 ment, energy and intensity one gets from a live
 performance. The wall of sound, the excitement
 of everyone around you... These can only come
 from the drama and showmanship of the live
 performance. Even if the band is young and unknown,
 nothing can replace the excitement of 4 or 5 mu-
 sicians onstage, interacting and creating music on
 the spot. When we read books or watch televi-
 sion, we're looking at someone else's slice of life.
 We're always free to put down the book, turn off
 the channel, and get on with our own existence.



C O N T E N T S

| | | | |
|-------------------|------------|---------------------------|--------|
| LIVE IN CONCERT | RB760 | 26 | |
| 2, 14, 18, 27, 28 | RB680 | 28 | |
| PR1660/1550/1440 | 4, 5, 6, 7 | RB650/630 | 29 |
| AH10 | 8, 9 | MC924/940 | 30, 31 |
| RS1010/1300 | 10 | MC824 | 32 |
| RS530/525 | 11 | GB10 | 34 |
| RS440 | 12 | LR10 | 35 |
| RS430 | 13 | JP20 | 36 |
| RS320/240/230/135 | 14, 15 | FG100 | 37 |
| AR350 | 16, 17 | AS200/80/AM205/75/70 | 38, 39 |
| AR300/120 | 18, 19 | | |
| XV500 | 20 | IBANEZ PICKUP GUIDE | 40, 41 |
| DT380 | 21 | IBANEZ HARDWARE GUIDE | 42, 43 |
| DB700/DT350/250 | 22, 23 | | |
| RB960 | 24 | IBANEZ STRING INSTRUMENTS | |
| RB850 | 25 | PROFILE | 44, 45 |
| | | IBANEZ FRIENDS | 46, 47 |



Leading Performance
**ELECTRIC GUITARS
 / BASS GUITARS**
Ibanez



P RO LINE

In response to the needs of today's most sophisticated musicians, the Ibanez R & D team is proud to introduce a new age of electric guitars . . . the Ibanez PRO LINE. Ibanez PRO LINE electrics utilize the latest developments in original hardware and pickup design, and have been specifically created to satisfy the most discriminating players. PRO LINE models feature a thinner, flatter, custom sized neck with a non-gloss oil finish, and a new flat radius fingerboard with large frets for fast, fluid playing. In addition, all PRO LINE models come equipped with the road proven PRO ROCK'R tremolo and TOPLOK locking nut system.

PR1660 The PR1660 proves that style and substance can make a winning package. Its unique "V" shaped body marks the PR1660 as a true rock n roll classic. The PR1660 is equipped with 2 newly developed V5 pickups that deliver increased mid range and power. The PR1660 features an ebony fingerboard and all black hardware (including TEK-GRIP control knobs). Body finish is a newly developed Polar White. Controls - 1 volume, 1 tone, 3 way switch.

PR1550 The PR1550 epitomizes the current state of Ibanez guitar design. The stylish fashioning of its body is augmented by a rear body cut, enabling maximum playing comfort. 2 SUPER 7FT single coil pickups and 1 IBZ humbucking pickup are mounted directly into the body through the use of a unique mounting system pioneered by Ibanez. This "tub" style of mounting has proven to be enormously successful in increasing sustain. Up to 11 different pickup combinations are available by using the 3 independent pickup switches and DUO SOUND control knob. The PR1550 also features the premier of the black PRO ROCK'R tremolo system and new Polar White finish.

PR1440 The PR1440 offers the same features as the PR1550 with the exception of its contoured body edge and the use of ebony for the fingerboard. Same large frets, same smooth action. The PR1440 comes stocked with 2 SUPER 7FT single coil pickups, 1 IBZ humbucking pickup (with DUO SOUND control) 3 individual pickup switches, 1 volume and 1 tone control. Body finish is red with black hardware.



PR1550PW

- OIL FINISH NECK:** PRO LINE guitars feature thin, oil finished necks for a smooth, natural feel and easy playing. As always, Ibanez quality is guaranteed. ①
- FLAT RADIUS FINGERBOARDS:** All PRO LINE models have flat radius fingerboards that enable clean, rapid-fire phrases and easy string bending. ②
- MINI SWITCH ON THE PICKUP COMBINATION:** Each pickup can be switched on or off independently through the use of the MINI SWITCH. A total of 7 different pickup combinations are available in all. ③
- PICKUP COMBINATION 4:** ④
- PRO ROCK'R:** ⑤
- TOP LOK:** The Ibanez TOP LOK locking nut system is designed in such a way that the strings are sandwiched between two strengthened steel plates, making neck adjustments a snap. ⑥
- TEK GRIP:** ⑦
- BODY DESIGN:** Each of the three Ibanez PRO LINE models feature unique, custom body designs. The PR1440 and PR1550 are identical in shape and size with the exception of their body cut. The PR1440 offers a contoured body cut while the PR1550 has a 90° cut. The PR1660 is an update on the classic rock n roll V shaped body.



PR1440RD



PR1660PW



Allan Holdsworth

Ah!



After two years of careful preparation by the Ibanez R & D team, the Allan Holdsworth model has finally arrived! Each detail of this guitar is carefully specified by Allan Holdsworth, enabling him to achieve the maximum in musical range and expression. It is our honor to create this instrument in collaboration with this legendary musician, an artist noted for his virtuosic talent and taste.

The body is constructed of select light weight Basswood with a specially constructed sound hole to produce an incredibly dry, clear sound. The AH10 also features a special pickup system, custom wound for Allan Holdsworth. The Powerocker tremolo is made with an aluminum block, the material found most effective in enhancing rich overtones and pure harmonics. The string passes through the inside of the block, enabling maximum sustain, and the kind of tone Allan seeks for in a guitar. Probably the most unique feature of the AH10 is its 25 1/2" scale neck with a custom 53 mm string pitch at the bridge. This is a much narrower spacing than an ordinary guitar, allowing for excellent string balance and perfect alignment for the maximum in speed and feel. The neck is flat and wide. The fingerboard is arched in a 17 inch radius and is finished with extra large Jen Dunlop #6100 frets for comfort and handling. The AH10 is wired to ensure consistent tone at all volumes, giving it the versatility to handle any playing situation.



AH10BY

AH10FG

RS DELUXE



STEVE LUKATHER
(TOTO)



RS1010SL

Designed for the high standards and professional requirements of one of the top studio and performing artists, the RS1010SL features an ebony fingerboard for smooth fingering and durability. The front pickup is the Super 58 with its pleasing, warm output; the rear pickup is the SL Special which has more windings than the 58. Pro Rock'r and Top Lok provide the RS1010SL with easy, precise fine tuning. The RS1010SL is finished in the stunningly beautiful Marine Sunburst and is identified with Steve Lukather's hallmark on the serial plate.



RS1300BK

RS1300NT

RS1300

The RS1300 features an arched top body, which gives a warm, natural sound completely different than a standard flat body. The Top Lok set up allows total freedom in neck adjustment, and the Pro Rock'r tremolo ensures perfect pitch after every bend. The Super 58 humbucking pickups can be split from humbucking to single coil through the Duo Sound System. The RS1300 is available in Natural and Transparent Red with a gold plated mounting ring and gold plated hardware. In addition, black finish is available with all black parts.

PRO ROCK'R

Newest tremolo system, including locking nut and fine tuners



RS530TR

RS525BK

RS530

The RS530 is the latest addition to the Ibanez Roadstar line. Along with the RS525, it is the only model available with a 24 fret fingerboard. The RS530 features an eye catching Black and Red 5-ply body binding. All components of the RS530 are black, including two IBZ humbucking pickups, which can be split to single coil at a touch of the DUO SOUND system pot. The RS530 features a flame maple top, a Rosewood fingerboard, the PRO ROCK'R & TOP LOK tremolo system, a 3 way toggle switch, 2-Volume 1-Tone controls, and TEK GRIP knobs. The RS530 is available in Black, Marine Sunburst, Transparent Red and Polar White.

RS525

A 24 fret fingerboard and deep cutaway give the RS525 a solid edge in playability. Its original, arch-topped body provides a light, warm sound. Each IBZ pickup is specially designed for bridge and neck positions. The pickup configuration is easily changed from humbucking to single coil at a touch of the pot. The TOP LOK and PRO ROCK'R tremolo system keep the guitar in tune even under the most demanding playing conditions. The RS525 comes with GOLD hardware and is available in Polar White or Purple Haze. The RS525 is also available in a stunning black finish with black hardware.

RS530



RS525



BIG FRETS

Rise-off high speed chassis and chase effortlessly with the larger size and more comfortable feel of BIG FRETS. Single notes are articulate, clearer and more beautiful. Ibanez defined BIG FRETS are now available on all 1985 new Roadstar II Series guitars.



RS440

In the same performance range as the RS430 is the Ibanez RS440, which differs only in its pickup configuration and color selection. The pickup combination is a two single-one humbucking set up which yields total freedom in sound selection. The front and center pickups are SUPER 7 single coil pickup is a blade V5 humbucker. Through use of the DUO-SOUND system, the V5 is easily split into the single coil mode. The RS440 is available with the PRO ROCK'R TOP-LOK string locking tremolo system, a 22 fret, 14 $\frac{1}{2}$ radius rosewood fingerboard with large frets for maximum playing comfort. In addition to Black, Fire Red and Royal Violet, the RS440 is now available in White.



RS430

Aside from a smart array of Ibanez extras (such as TEK GRIP knobs, SMOOTH TUNER II machine heads and a side mounted jack) the RS430 incorporates our recently redesigned PRO ROCK'R tremolo system. The PRO ROCK'R features a foundation fulcrum point which eliminates metal-to-metal friction; an easy string change system; a snap-in/out arm, and fine tuning calibrators so simple to use, you can tune while playing. The RS430 is stocked with 3 single coil blade pickups. Wired in such a way that the middle pickup's polarity may be reversed giving the classic "out of phase" sound! A 5 way selector switch controls the RS430's pickup configuration. The RS430 is available in Black, White and Forest Green.



SMOOTH TUNER II

Equipped Smooth Tuner II Machine Heads are precision machines that are built to last. The 24:1 gear torque settings (ratio to 20,000 rotations) provides built-in extra compression, smooth tuning. The 100% steel housing adds to the machine's strength, preventing lubricant leakage and contamination. The special design assures precise and consistently smooth tuning action.

But, at a concert, the spectator is thrown into a situation totally out of control. The stage explodes into sound and light, you stand on a seat, people push up against you... Every second seems like an eternity, and your body is gripped by the waves of sound rolling off the stage. Whether you're ready or not, a new feeling takes control, and you become part of the action. Close your eyes and let your mind go blank. It's not some thing you can think about, this rush of new sensations. Forget about what happened that day, your school, your job... The joy of a live performance is discovering a side of yourself you've never seen before. Step through the looking glass and see the world of light and color, sound and fury...

Whenever a show comes to town, there's always certain sights you can expect to see. Over there, by the stadium door, there's a guy sleeping, tangled hair, faded jeans... He's been outside the door for 24 hrs, waiting for it all to happen... You see these fans at every show, in every city... Even in the worst weather, they endure long hours, even days in front of the stadium, waiting for the moment of truth. For them, the show starts when they find their place at the door. No, before that, the day the tour is announced.

The line grows longer and longer...

the crowd outside the stadium gets larger, and they start to laugh with each other, party with each other, grow frenzied with anticipation. About the same time, large trucks arrive at the stadium, and skilled professionals in several fields begin their jobs. Roadies set up with lightning speed, and begin to lay down thousands of cables. Carefully selected sound gear, such as guitars, amps, and signal processing equipment is taken off the trucks in road cases. It's the latest leg of a long journey, which started back at the factory, where dedicated craftsmen painstakingly checked each guitar before putting it into its packing case. It's food for thought for any young, aspiring guitar hero...



V17
A blade-type pickup designed to maintain output during heavy string bending.

V27T
In-body direct mounting system.

POWEROCKER
Tremolo system featuring a rounded joint design and QUIK-CHANGE bridge.

PHASE SWITCH
The RS135 incorporates a phase switch into the electronic harness.

RS135

Equipped with the acclaimed POWEROCKER tremolo system, the RS135 represents another Ibanez breakthrough in professional features at an affordable price. A 22 fret maple neck and matching gloss finish on body and head stock is coupled with the brilliantly clear sound of the SUPER 5 pickup. Available colors are Black, White and Red.

RS230

The RS230 features a unique single coil set-up. The pickup is mounted directly on the body, making possible a nearly never ending sustain that can't be produced by guitars using a standard pickup mounting system. The arch-bladed pickup the V7T is already known to satisfied players of the Ibanez RS430 its all black neck, POWEROCKER complete the extraordinary guitar. Available colors are Black, White and Red.

RS240

The RS240 is a modified version of the RS230 that offers a different combination of pickups. This combination has proven to be a favorite among contemporary musicians. The RS240 features two V7T single coil pickups and one SUPER 70 humbucking pickup mounted directly in the body through use of the Ibanez "tub" mounting system. POWEROCKER tremolo system is standard on the RS240. Master volume and tone controls, plus a center pickup volume control in conjunction with a 3 way toggle switch offer a wide variety of possible sounds.

RS320

A first glance at the RS320 presents a beautifully metallic combination of chrome plated mounting rings and hardware along with its 1 ply vory binding. A second look reveals an impressive list of playing features such as the POWEROCKER tremolo with snap in/snap out arm; TOP LOK locking nut system, TEK GRIP control knobs and a side mounted jack. Body, neck and headstock are done in a matching gloss finish. Available colors are Black, White and Red.



RS135WH RS135BK RS230RD RS240WH RS240RD RS320BK

A r

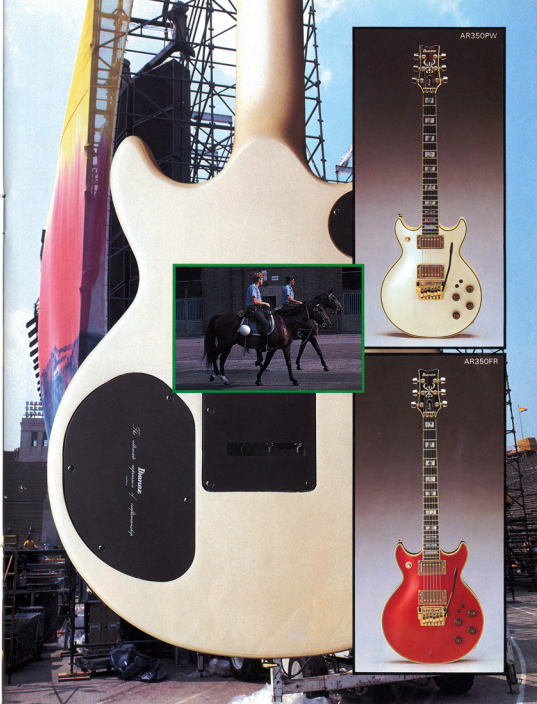
TOP LOK II & GRAPHITE NUT
Use of graphite as nut material eliminates friction and maintains perfect tuning while using tremolo.



AR350

Based on the popular AR300, the AR350 has two important additions: THE PRO ROCK'R tremolo system and the TOP LOK II string clamp. Its rounded fulcrum point eliminates metal to metal friction, the PRO ROCK'R liquid smooth giving tremolo action during even heavy arm use. The TOP LOK II allows the neck of the AR350 to be adjusted easily with the clamp still in place and helps keep the guitar in tune. The Ibanez TRI SOUND system offers the guitarist nine distinct sound variations. Available Finishes are Polar White, Marine Sunburst and Fire Red.

PRO ROCK'R & ARCHED TOP
Dual action PRO ROCK'R tremolo system for use on arched top bodies.



And watching the roadies set up 10 or 12 guitars out on stage, you do begin to think... How does a guitarist choose his guitar? The answer lies in his style. There are literally thousands of virtuoso guitarists out there, and each one demands a guitar that will enhance their ability to create onstage. Take Steve Lukather. He's known world wide for his guitar expertise, having played on the Grammy winning albums of Toto, and as a session guitarist with a host of L.A. boogie. When he needed a guitar to suit his great versatility, we listened to his many tips, and came up with the Ibanez Steve Lukather model—the RS1010SL.

We asked Steve what the live experience means to him. Even after all the awards and all the tours he's done, he says that he still gets a tremendous rush of adrenalin before every show. And, he says, you can't replace the live setting as an inspiration for creativity and emotion.

It's time for sound check. Roadies carefully check the monitors and amps. Soundmen at behind the board, balancing and adjusting each source of sound. Finally the band arrives. The dressing room gets crowded... The stadium doors burst open. The audience surges onto the vast stadium floor and fills it within minutes. The air is heavy with anticipation, and everybody focuses on the stage, waiting for some sign of life.

AR300

Ibanez AR300 Artist Series guitars feature SUPER 58 pickups and the exclusive Ibanez TRI-SOUND coil selector system. Each pickup may be individually selected for humbucking, single-coil or parallel coil operation. This provides a wealth of possible sounds. These features from a single instrument.

AR120

A new addition to the established Artist line, the AR120 a much lighter body weight as a result of its carefully selected materials. Nevertheless, the AR120 readily conforms to the Artist tradition of a warm, pleasing sound. SMOOTH TUNER machine head and a graphite nut guarantee tuning accuracy and stability. The SHORT STOP bridge tailpiece holds intonation setting firmly and allows all string vibrations to be transmitted to the body. IBZ pickups, specially designed for both front and rear positions, feature a special casting for a stable, defined sound even at full volume. With the Duo-Sound system, you can switch from a warm, humbucking sound to a bright single coil sound at the touch of a pot.



IBZ

SUPER 58

QUICK CHANGE II

SHORT STOP

SMOOTH TUNER

DUO SOUND

The newest in solid cast humbucking pickups.

Classic Ibanez pickup, with smooth, warm output and vintage humbucking sound.

The original Ibanez shape of the SMOOTH TUNER facilitates fast and easy fine tuning. Post revolution is smooth with no snap-tuning or back-lash.

The dual-slot post accommodates any string-wrap style. A 18:1 turn ratio assures tuning accuracy.

Push on/off switch for changing pickup configuration.



XV500 Designers at Ibanez are proud to introduce the shape of the future, the XV500. Its unique design has not, however, eclipsed playability. Its radical looking yet functional cutaway allows easy access to even the highest frets. A V5 pickup makes the XV500 sound as hot as it looks. The XV500 is available in Blue Halfburst or Violet Halfburst.

Ibanez presents a DESTROYER guitar with three original graphic designs: Barbed Wire, Safari Red and Red Sun. We've used the PRO ROCK'R tremolo and TOP LOK locking nut system to assure constant tuning during heavy arm use. Its looks and features make this guitar the ultimate weapon for any heavy metal arsenal.



XV500VT

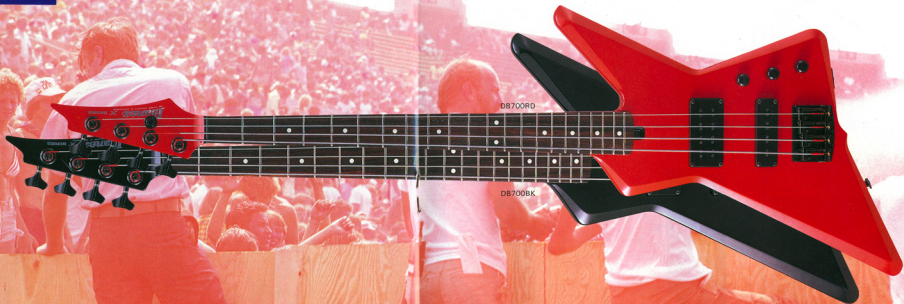
XV500BE



DT380BR

DT380WI

DT380RS



DB700RD

DB700BK



DT250WH

DT250TR



DT350BK

DT350FG

DB700

The seething excitement of the Destroyer guitar shape takes form in the bass with the DB700. An Accucast 811 bridge which facilitates quick string change. The excellent combination of the J6 front pickup and J5 rear pickup in concert with the DUO-SOUND system allows the bassist a range from a thundering humbucking rumble to a slashing single coil sound.

DT350

A lightweight body, 22 fret rosewood fingerboard and easy playability make the DT350 a force to be reckoned with. Its rock'n roll looks are accentuated with a one ply black binding and black hardware. The PRO ROCK'R tremolo system makes tremolo playing and string changes a snap. The DT350 is available in Fire Red, Forest Green and Black.

DT250

The DT250 combines aggressive design with a powerful, heavily wound V5 pickup for the appearance and sound necessary for today's masters of metal. The controls are surprisingly simple. Single tone and single volume controls are capped off with nonslip TEK GRIP knobs. Black and white models both feature rosewood fretboards. The brilliant Transparent Red (TR) model has a maple fretboard the same color as the body and headstock. The DT250 is available in Black, Transparent Red, and White.



RB960VW



RB960BK



RB850RV

RB960

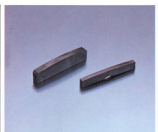
The RB960 has an original arch-top body beautifully outlined by an ivory and black binding. The neck, with its 24 fret rosewood fingerboard, is set at a precise angle for ideal string tension, tight sound and long, sonorous sustain. Its J60, a low impedance output pickup completely shuts out hum and mechanical noise. The RB960 is available in Black or Polar White.

RB850

The new Ibanez RB850 bass was designed for the player who requires his instrument to have the size, style and playability of a custom made bass at half the price. By carving a top arch on the body we found that not only is the playability improved but a much brighter sound is achieved.

GRAPHITE NUT

The use of graphite for the nut was a natural. An extremely hard surface it ensures the constant friction produced by the strings without wear. Polished to mirror smoothness it helps to prolong string life and resists snapping and detuning the strings during tremolo use.



J6

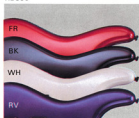
Pickup featuring 16 pole pieces for a perfectly balanced sound.



ACCU-CAST BII Adjustable **QUK-CHANGE** tailpiece for bass.



RB850



RB760

The new Deluxe RB760 is a small body bass that delivers full size bass response. The RB760 features the popular 24 fret neck with a rosewood fingerboard as well as a graphite nut designed through Vibration Model Analysis testing. The twin bladed JV7 pickup combines splendidly with the P55 for a wide range of tone variation.

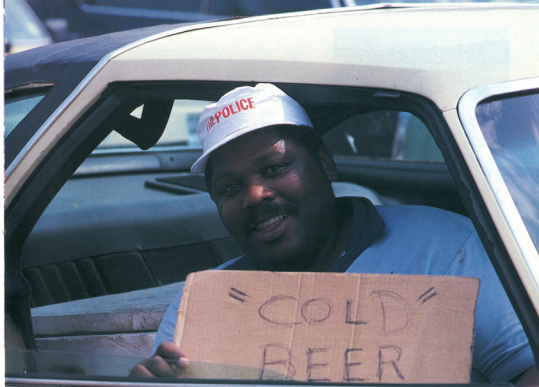


RB760RD



RB760WH

RB760BK



The start of the show is defined in just one sound. A shout, a crack of a snare drum, the ring of a guitar chord... It's another world. Everyone is captured by that moment, that release. The sound attacks the audience. It fills your head, your heart, your lungs. Everyone's on their feet, and you feel like you're being swept away. Onstage, the guitarist takes revenge for all the time "lost-learning his craft, paying his dues. All his feelings about life, love, a certain girl, a town he's just left, come through in his playing. The audience can sense the musician's emotion, and their response feeds his onstage energy. Everything is at a fever pitch. The sound travels to all corners of the stadium. What's unusual about it? It's kind of like a giant party, mixed with the blood lust of a crowd at the Roman games. The band and crowd mix to produce the sound of a battle, or some bizarre circus, a great play at the Super Bowl, or the Malibu surf. And in the midst of all this chaos, the distinctive sound of one guitar rings through.

Every musician has his own voice, his own way of expressing his artistry. George Benson picks the strings of his Ibanez GB-10, and the sound is cool and fluid, smooth and seductive. When Gary Moore's left hand races up the neck of his RS guitar, he's fighting himself to make the music come alive. John Scofield excites his AS and AM guitars into action, until they become one with the sound in his head. And when Sting handles his MC Bass, he's lecturing to the audience about his philosophy, just like he did back in school. When Mike Porcaro plays, he's sharing the freedom of expression he gets with his Polar White MG wash-the-crowd. Pat Metheny takes his AR and splashes his style of modern art on a canvas of air. And when Phil Collen waves his DT in the air, he's raising the crowd's body temperature.

Live!



Musicians all over the world are using Ibanez instruments to make an impact... to find their own voice. And when they do, the audience has the time of its life.

With the final encore, the union of player and audience is complete. Everything becomes quiet and dark. As the cool night air hits you, you realize you've changed. You've discovered something within yourself, a new feeling, a sound... You want to be part of what you've just seen. After the show, everything is quickly broken down and packed away. When the trucks leave, there is silence. Every live performance is a bridge to the next performance. There is a chance that, someday, the young person sleeping in front of the stadium door will be playing onstage under thousands of spotlights. That's because every professional musician began their journey in the same way as that person. They used to be part of the audience. We don't know if you're part of the audience or a performer. But we do know what you demand from a live performance. We at Ibanez are improving our technology and artistry, to bring you state of the art guitar craftsmanship... on every stage around, in every corner of the world. We make guitars that put you in the spotlight, to make what's going on in your head happen on the fretboard.



Next time you're at a show, look for all the Ibanez Star Performers. Shouldn't you be one?

RB680

The RB680 features two new J50 pickups designed for this jazz style bass. Its tone is tight and bright and you can quickly achieve favourite sounds or new tone variations with the BALANCER. TEK GRIP knobs provide a firm hold for easy adjustments. The RB680 uses the ACCU CAST B11 bridge which allows quick string changes and height adjustments. The carefully calibrated mass and weight of the B11 allows even the heaviest bass notes to be transmitted fully to the body. The RB680 is available in Black and Red.



RB680RD

RB680BK

RB650

The RB650 offers the best of both worlds by featuring the versatility of the SUPER P4 pickup in combination with the SUPER J4, for round full bass, crisp snapping treble. With a full 34" scale length maple neck on a basswood birch body, the RB650 bass is a valuable addition to any ORIGINAL check player's collection. Available in Black, Burgundy or White finishes.

RB630

The research in V.M.A. was even more important for the development of the Roadstar II Standard Bases. The vibrations of a bass guitar string require exacting body specifications. A redesigned headstock and neck plus the use of basswood for the body yielded the optimum results. The RB630 bass offers Ibanez HERCULES B precision tuning machines and the SUPER P4 pickup for a full, rich sound with plenty of punch. The RB630 is available in Black or Burgundy.

J50 Pickup featuring a solid, natural bass sound with a specially designed metal cover.



RB650BK

RB650WH

RB630BY

RB630BK

MC

MC924 & 940

The MC924 is the apex of bass guitar design. Neck-through-body construction with its durability and sustain are joined with the best materials for superior sound quality and playability. The power saving electronic circuitry of the J60 pickup is cast inside the pickup for a noiseless, natural bass sound. The 24 fret ebony fretboard assists smooth, easy fingering. Three colors are available for the MC924: Black, Dark Stain, or Polar White.

The MC940 is the fretless version of the MC924. Black and Dark Stain are the available finishes.

SMOOTH HEEL (MC)

A smooth neck to body joint which increases playing comfort and allows access to the highest frets.



MCB24

The 1985 MC Series retains its well known silhouette and neck-through-body design. These "status" basses from Ibanez feature a smaller body size and new arched top for a tighter sound. The MCB24 offers simplicity of operation and a wide range of tone variations. The MCB24 is available in Black, Polar White, or Dark Stain.

1 SMOOTH TUNER BII

The SMOOTH TUNER BII is light weight for a ball-arched-tail instrument. The large post design makes stringing easy. Post rotation is smooth with no snapping or back-rush. The 20:1 turn ratio provides pinpoint tuning accuracy.

1 JG

Pickup featuring 16 pole pieces for a perfectly balanced sound.

3 DUO SOUND

Push on/off switch changes pickup configuration.



MCB24DS

MCB24BK

MCB24PW



GB

The GB10 captures the versatile essence that is George Benson's hallmark. The unique down-sized full hollow body design, along with the ebony bridge, adjustable tailpiece and floating pickups create an instrument of remarkable response and character. The GB10's wide range of sounds has inspired pop, rock, jazz, and fusion players alike to new levels of creative expression. Experience the playing excitement that comes

GB10 from the quality and versatility of the GB10.



GB10S



GEORGE BENSON



LR10AV

LEE RITENOUR



LR10

The LR10 represents a fresh, no-nonsense approach to the classic thin-line semi-acoustic. It's specially designed neck combines maple and mahogany for added warmth and sustain. Custom pickups provide the bite and clarity desired by semi-acoustic players. The unique foam-filled side chambers prevent feedback while allowing the acoustic character of the instrument to ring tone. The LR10 redefines the semi-acoustic and gives it the soul and fire it deserves.

JP20

The JP20 embodies the impeccable style and intimate feel of a jazz legend. The unique full-body design and offset Super 58 pickups provide the JP20 with unparalleled tonal balance throughout the entire range of the instrument. The JP20 features a solid ebony bridge and tailpiece for exceptional warmth. The headstock, neck and bridge angles provide the JP20 with unusual sensitivity & dynamic response.



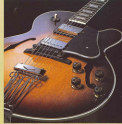
JP20BS



JOE PASS

JP20

FG100



FG100

The FG100 full acoustic brings a traditional design to its finest realization. The improved structural design provides superior acoustic balance for cleaner lows and a more brilliant high end. The bridge, neck and headstock geometry bring the FG100 to life with the feel and response of a truly professional instrument. Two Super 58 pickups capture the full-bodied sound of FG100. The FG100 full acoustic electric... for the discriminating traditionalist.



FG100NT

ARTIST SEMI ACOUSTIC



AM205

The most exquisite Stage-master. The AM205 features the choicest materials and Ibanez famous attention to detail. A classy rendering of this exciting new design.

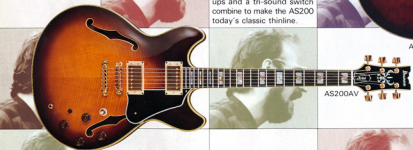


GIBRALTAR II

Bridge which allows for totally adjustable string height, and lock up of all moving parts.

AS200

The AS200 is the truly superlative semi acoustic. The AS200 utilizes a high-grade curly maple top, one-piece mahogany neck and an ebony fingerboard. Super 58 pickups and a tri-sound switch combine to make the AS200 today's classic thinline.

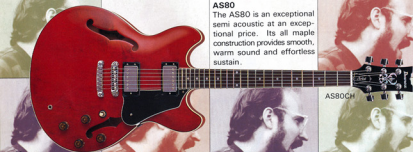


AM205AV

AS200AV

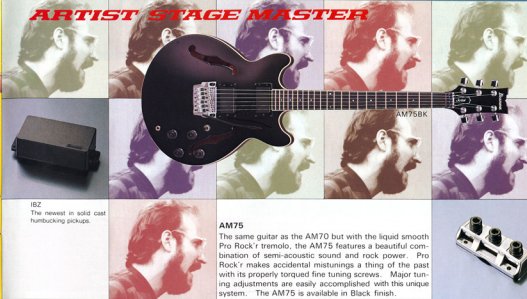
AS80

The AS80 is an exceptional semi acoustic at an exceptional price. Its all maple construction provides smooth, warm sound and effortless sustain.



AS80CH

ARTIST STAGE MASTER



IBZ
The newest in solid cast humbucking pickups.



AM75BK

AM75

The same guitar as the AM70 but with the liquid smooth Pro Rock'r tremolo, the AM75 features a beautiful combination of semi-acoustic sound and rock power. Pro Rock'r makes accidental mistunings a thing of the past with its properly torqued fine tuning screws. Major tuning adjustments are easily accomplished with this unique system. The AM75 is available in Black finish.



TOP LOK II
String locking nut system for angled head stock.



SMOOTH TUNER
A smooth tuning, "no-wrap" machine head.

AM70

With its bold black finish and pickups, the AM70 augments the AM series of small, comfortably sized semi-acoustics. Its Short Stop bridge/tailpiece allows each note to be perfectly transmitted to the body with practically no loss of vibration. The original stud system gives each string the proper tension and enables easy set-up of various string heights. The AM70 uses IBZ pickups which are designed specifically for use in either bridge or neck position. The AM70 is available in Black finish.



SHORT STOP
Combination bridge-tailpiece with wide range of string height adjustments.



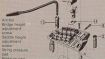
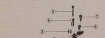
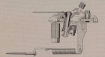
AM70BK

John Scofield

PRO ROCK'R

Following our HARD ROCKER and POWEROCKER, Ibanez B & C introduces you to the PRO ROCKER tremolo system with confidence. The PRO ROCKER encompasses all the features demanded of today's tremolo systems including locking pull and fine tuning. Dual action allows use of tremolo from extreme pitch bends to the most sensitive vibrato. The tremolo arm itself has a new fast strap inlets and feature set nearer to the fulcrum, so arm control is smoother and safer. Through the use of a special washer, tremolo arm playing is extremely smooth. All metals used feature an electrolyte. Another standout feature of the latest PRO ROCKER is its fine tuning system. This new system offers fine-tune tuning that is so accurate and so easy to use you can even operate while playing. Together with the TOP LOK system, the PRO ROCKER is a perfect device.

ADJUSTMENT PARTS

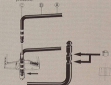


ADJUSTMENT

1. To set bridge height, turn adjustment screw 2.
2. To set string action, turn adjustment screw 3.
3. To change string turn pressure, adjust screw 3.
4. To fine tune the string turn adjustment, screw 3.
5. To set intonation, locate screw 2 and turn adjustment screw.
6. To lock the saddle turn locking screw 7.

TREMLO ARM AND HOLDER
SNAP IN SNAP OUT TREMLO ARM
(PRO ROCKER and POWEROCKER)

Put the arm in the arm holder at a 90° angle to the holder. Push the arm into position. **NOTE:** Attempting to push the arm in at position 1 or 2 may result in damage to the arm due to tension pressure.

MAINTAINING DESIRE TORQUE-CHANGING
TEFLON WASHERS

Changing the Teflon washers will enable you to regain the desired torque. When changing the washers, be sure to force these washers completely.

1. Remove the old washer.
2. Make sure the right size of the new washer is being used.
3. Insert the new washer.

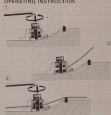
Unless these instructions are followed, damage to the arm may result. **REMARK:** This is a precision engineered instrument. An error in setup may result in unsatisfactory performance.

TOP LOK AND TOP LOK II

The new TOP LOK string clamping system is constructed of two pieces of top quality hardened steel which assures a solid hold once tightened. The TOP LOK system was designed so that neck adjustments can be easily made even with the clamp still in place.

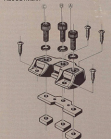
The secure locking action of the latest Top Lok system is now available on guitars with single headstocks. Top Lok II is made with a higher quality material. Available also in a right, deluxe hold. Stay in tune and maintain tension balance with Top Lok II from Ibanez.

OPERATING INSTRUCTION



1. Loosen the screws. (A for 2nd string, B for 3rd string, C for 5th string.)
2. Insert strings through the openings. (Wind strings or machine heads. Turn the strings. (Strings will be switched).)
3. Tighten the screws.

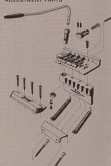
ADJUSTMENT



POWEROCKER

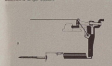
Years ago the tremolo on your guitar has used as a standby for a bit of effect during solo licks. Today the tremolo bridge on a guitar has emerged as an indispensable tool, an important to musical expression as the guitar itself. With the tremolo bridge coming into its own again, Ibanez studied the design and developed a tremolo bridge that enables the smoothest rocking action, while maintaining firmness in the original concept of quick string change. The POWEROCKER is built in the tradition of the Hard Rocker in utilizing hardened steel surfaces for smoother, more durable bridge action. All moving parts of the POWEROCKER are synchronized to provide a sensitive and responsive tremolo. This tremolo arm itself slips into place following the approved procedure of proper thread and nut being. The POWEROCKER also allows for quick string changes by cutting the string end where it should be, in the bridge lock mark. This positioning not provide fast string set up, but as I.M.A. studies have shown, only provides better maintenance of vibrations for longer sound and longer sustain.

ADJUSTMENT PARTS



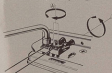
SPLIT DRAWING OF "POWEROCKER"

As shown in the design the ball end of the string is fully anchored in the bridge foot. This unique arrangement allows the vibrations originating from the strings to transmit clearly through the bridge, providing greater sound-rich longer sustain.



STRING ACTION INSTRUCTIONS

1. To set string action, turn adjusting screw 1.
2. To set intonation, turn adjusting screw 2.



ROUNDED JOINT SURFACE

The importance of the rounded joint surface is beyond question on the hard Rocker tremolo bridge. The smooth joint between the connecting parts of the bridge releases friction resulting in responsive arm action and longer bridge life.

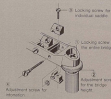
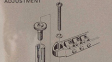


THE GIBRALTAR II

Ibanez Artars have long been recognized for the noticeable amount of sustain and warmth they possess. One of the main reasons behind this ability to produce such rich and powerful sound can be attributed to the use of the Gibraltar bridge and tremolo. The new Gibraltar II bridge incorporates several design changes making it easier and more effective to use than ever.

Overall bridge height adjustments are made through the use of two thumb wheels, located one on either end and then held in position by corresponding locking bolts. In this adjustment, the wheels operate similarly by adjusting and securely locking the saddle into position through the use of two separate screws. This ability to lock and move parts on the Gibraltar II bridge insures you of correct constant height and intonation settings.

ADJUSTMENT

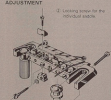


1. Loosen the screw 1 (counter clockwise) 1/2 cc each at both ends of the bridge.
2. Adjust the screw 1 to your desired bridge height.
3. Tighten the screw 1 to lock position (clockwise) 1/2 cc each at both ends of the bridge.
4. Lock the screw 1 (counter clockwise).
5. Set intonation by turning the screw 2.
6. Turn the screw counter clockwise if the harmonic note at 12th fret is lower than the fundamental note.
7. Turn the screw clockwise if the harmonic note at 12th fret is higher than the fundamental note.
8. Tighten the screw 1 to lock position (clockwise) after the intonation adjustment is completed.

SHORT STOP

Recognizing the problems with previous bridge designs, Ibanez has totally redesigned the adjustable bridge to meet the most "laborious" adjustable body. The bridge maintains a perfectly straight string line to reduce string tension, to access the bridge. The revolutionary two-piece saddle design provides "saddle lift" with a slotted saddle post. The saddle height is easily adjusted with a single screw. The string are anchored with the "angled stop" design for easy string change.

ADJUSTMENT



1. Loosen screw for the individual saddle.
2. Adjust the screw to your desired bridge height.
3. Tighten the screw to lock position (clockwise) after the intonation adjustment is completed.

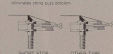
ADJUSTMENT

1. Adjust the screw 1 to your desired bridge height (1/2 cc each at both ends of the bridge).
2. Loosen the screw 2 (counter clockwise).
3. Set the intonation by turning the screw 2.
4. Turn the screw (clockwise) if the harmonic note at 12th fret is lower than the fundamental note.
5. Turn the screw counter clockwise if the harmonic note at 12th fret is higher than the fundamental note.
6. Tighten the screw 1 to lock position (clockwise) after the intonation adjustment is completed.

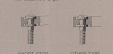
FEATURE

COMPARISON OF ORDINARY TYPE BRIDGE TAILPINE AND "SHORT STOP" UNDER THE STRING TREMOLO.

1. PRESET TILT ANGLE
The "SHORT STOP" is designed to solve the string angle problem caused by string tension which is seen below right on ordinary type bridge tailpines. The solution to this is an adequate string angle which eliminates string buzz problem.



2. WORK ADJUSTMENT RANGE OF BRIDGE ANGLE
The "SHORT STOP" has greater work possible to work adjustment range.



ACCU CAST BII

The Ibanez ACCU CAST BII bridge tailpiece is a low mass design for fast vibration of string vibrations to the body. Each string rests firmly on the saddle for maximum sustain and tone, thereby increases even heavily percussive playing styles. String break is noticeably reduced with a single screw.



1. Loosen the screw for the individual saddle.
2. Adjust the screw to your desired bridge height.
3. Tighten the screw to lock position (clockwise) after the intonation adjustment is completed.

1. Adjust the screw 1 to your desired bridge height (1/2 cc each at both ends of the bridge).
2. Loosen the screw 2 (counter clockwise).
3. Set the intonation by turning the screw 2.
4. Turn the screw (clockwise) if the harmonic note at 12th fret is lower than the fundamental note.
5. Turn the screw counter clockwise if the harmonic note at 12th fret is higher than the fundamental note.
6. Tighten the screw 1 to lock position (clockwise) after the intonation adjustment is completed.

SIDE VIEW

1. Screw for height adjustment.
2. Screw for intonation adjustment.

IBANEZ STRING INSTRUMENTS PROFILE

| MODEL NO. | FINISH | BODY | NECK | FINGERBOARD | NO. OF FRET | | | SCALE | | HARDWARE | | | BRIDGE | PICKUPS | CONTROLS | FUNCTIONS | | | MODEL NO. | | |
|-----------|----------------|--------------|------------|-------------|-------------|----|----|---------|---------|----------|----|--------|--------------------|--------------|---------------|-----------|-------|------------|-----------|-----------|-----------|
| | | | | | 21 | 22 | 24 | 24 3/4" | 25 1/2" | 24 | 25 | CHROME | | | | GOLD | BLACK | PHASE | | DOD SOUND | TR. SOUND |
| | | | | | | | | | | | | | | | | | | | | | |
| AH10 | BY, FG | BASSWOOD | MAPLE | EBONY | | | | | | | | | POWERROCKER | AH SP×1 | 1V, 1T | | | / | AH10 | | |
| RS135 | BK, RD, WH | BASSWOOD | MAPLE | / | | | | | | | | | POWERROCKER | SUPER5×3 | 1V, 1T, 3WAY | 1 | | / | RS135 | | |
| RS230 | BK, RD, WH | BASSWOOD | MAPLE | ROSEWOOD | | | | | | | | | POWERROCKER | V7T×3 | 2V, 1T, 3WAY | | | / | RS230 | | |
| RS240 | BK, RD, WH | BASSWOOD | MAPLE | ROSEWOOD | | | | | | | | | POWERROCKER | V7T×2,S70×1 | 2V, 1T, 3WAY | | | / | RS240 | | |
| RS320 | BK, RD, WH | BASSWOOD | MAPLE | ROSEWOOD | | | | | | | | | POWERROCKER | IBZ×2 | 1V, 1T, 3WAY | | | / | RS320 | | |
| RS430 | BK, FG, WH | BASSWOOD | MAPLE | ROSEWOOD | | | | | | | | | PRO ROCK R | V7×3 | 1V, 1T, 5WAY | | | TOP LOK | RS430 | | |
| RS440 | BK, FR, RV, WH | BASSWOOD | MAPLE | ROSEWOOD | | | | | | | | | PRO ROCK R | S7×2,V5×1 | 1V, 1T, 5WAY | 1 | | TOP LOK | RS440 | | |
| RS525 | BK, PH, PW | ARCHED BASS | MAPLE | ROSEWOOD | | | | | | | | | PRO ROCK R | IBZ×2 | 2V, 1T, 3WAY | 2 | | TOP LOK | RS525 | | |
| RS530 | BK, MS, TR, PW | FLAME M+BASS | MAPLE | ROSEWOOD | | | | | | | | | PRO ROCK R | IBZ×2 | 2V, 1T, 3WAY | 2 | | TOP LOK | RS530 | | |
| RS1010SL | MS | ARCH BM+BASS | MAPLE | EBONY | | | | | | | | | PRO ROCK R | S58×1,SLSP×1 | 1V, 1T, 3WAY | 2 | | TOP LOK | RS1010SL | | |
| RS1300 | BK, NT, TR | ARCH BM+BASS | MAPLE | ROSEWOOD | | | | | | | | | PRO ROCK R | S58×2 | 2V, 1T, 3WAY | 2 | | TOP LOK | RS1300 | | |
| D7250 | BK, TR, WH | BASSWOOD | MAPLE | MAPLE/ROSE | | | | | | | | | POWERROCKER | V5×2 | 1V, 1T, 3WAY | | | / | D7250 | | |
| D7350 | BK, FG, FR | BASSWOOD | MAPLE | ROSEWOOD | | | | | | | | | PRO ROCK R | V5×2 | 1V, 1T, 3WAY | | | TOP LOK | D7350 | | |
| D7380 | RS, SR, WI | BASSWOOD | MAPLE | ROSEWOOD | | | | | | | | | PRO ROCK R | V5×2 | 1V, 1T, 3WAY | | | TOP LOK | D7380 | | |
| XV500 | BE, VT | BASSWOOD | MAPLE | ROSEWOOD | | | | | | | | | PRO ROCK R | V5×2 | 1V, 3WAY | | | TOP LOK | XV500 | | |
| DB700 | BK, RD | BASSWOOD | MAPLE | ROSEWOOD | | | | | | | | | ACCU CAST B II | J6×1,J5×1 | 1V, 1T, 1BL | 1 | | / | DB700 | | |
| AR120 | BK, RD | BASSWOOD | MAPLE 3PLY | ROSEWOOD | | | | | | | | | SHORT STOP | IBZ×2 | 2V, 2T, 3WAY | 2 | | / | AR120 | | |
| AR300 | AV, CS | FLAME M+MAHO | MAPLE 3PLY | EBONY | | | | | | | | | GIBRALTAR II, O II | S58×2 | 2V, 2T, 3WAY | 2 | | / | AR300 | | |
| AR350 | FR, MS, PW | FLAME M+MAHO | MAPLE 3PLY | EBONY | | | | | | | | | PRO ROCK R | S58×2 | 2V, 2T, 3WAY | 2 | | TOP LOK II | AR350 | | |
| PR1440 | RD | ALDER | MAPLE/OIL | EBONY | | | | | | | | | PRO ROCK R | S7FT×2,IBZ×1 | 1V, 1T, 3MINI | 1 | | TOP LOK | PR1440 | | |
| PR1550 | PW | ALDER | MAPLE/OIL | / | | | | | | | | | PRO ROCK R | S7FT×2,IBZ×1 | 1V, 1T, 3MINI | 1 | | TOP LOK | PR1550 | | |
| PR1660 | PW | ALDER | MAPLE/OIL | EBONY | | | | | | | | | PRO ROCK R | V5×2 | 1V, 1T, 3WAY | | | TOP LOK | PR1660 | | |
| RB630 | BK, BY | BASSWOOD | MAPLE | / | | | | | | | | | STANDARD | P4×1 | 1V, 1T | | | / | RB630 | | |
| RB650 | BK, BY, WH | BASSWOOD | MAPLE | / | | | | | | | | | STANDARD | P4×1,J4×1 | 2V, 1T | | | / | RB650 | | |
| RB680 | BK, RD | BASSWOOD | MAPLE | ROSEWOOD | | | | | | | | | ACCU CAST B II | J50×2 | 1V, 1T, 1BL | | | / | RB680 | | |
| RB760 | BK, RD, WH | BASSWOOD | MAPLE 3PL | ROSEWOOD | | | | | | | | | ACCU CAST B II | P5×1,JV7×1 | 1V, 1T, 1BL | | | / | RB760 | | |
| RB850 | BK, FR, RV, WH | ARCHED BASS | MAPLE 3PL | ROSEWOOD | | | | | | | | | ACCU CAST B II | J6×2 | 1V, 1T, 1BL | 2 | | / | RB850 | | |
| RB960 | BK, PW | ARCHED BASS | MAPLE 3PL | ROSEWOOD | | | | | | | | | ACCU CAST B II | J60×2 | 2V, 2T | | | / | RB960 | | |
| MC824 | BK, DS, PW | ASH | M+WAL+M | ROSEWOOD | | | | | | | | | ACCU CAST B II | J6×2 | 1V, 1T, 1BL | 2 | | / | MC824 | | |
| MC924 | BK, DS, PW | ASH | M+WAL+M | EBONY | | | | | | | | | ACCU CAST B II | J60×2 | 2V, 2T | | | / | MC924 | | |
| MC940 | BK, DS | ASH | M+WAL+M | EBONY | | | | | | | | | ACCU CAST B II | J60×2 | 2V, 2T | | | / | MC940 | | |
| AM70 | BK | BIRCH PLY | MAPLE 3PLY | ROSEWOOD | | | | | | | | | SHORT STOP | IBZ×2 | 2V, 2T, 3WAY | | | / | AM70 | | |
| AM75 | BK | BIRCH PLY | MAPLE 3PLY | ROSEWOOD | | | | | | | | | PRO ROCK R | IBZ×2 | 2V, 2T, 3WAY | | | TOP LOK II | AM75 | | |
| AM205 | AV | BURL MAHO | MAHO 3PC | EBONY | | | | | | | | | GIBRALTAR II, O II | S58×2 | 2V, 2T, 3WAY | | | / | AM205 | | |
| AS80 | AV, CH | BIRCH PLY | MAPLE 3PLY | ROSEWOOD | | | | | | | | | GIBRALTAR II, O II | S58×2 | 2V, 2T, 3WAY | | | / | AS80 | | |
| AS200 | AV | FLAMED MAPLE | MAHO 3PC | EBONY | | | | | | | | | GIBRALTAR II, O II | S58×2 | 2V, 2T, 3WAY | 1 | | / | AS200 | | |
| FG100 | BS, NT | MAPLE PLY | MAPLE 3PLY | ROSEWOOD | 20F | | | | | | | | ROSEWOOD | S58×2 | 2V, 2T, 3WAY | | | / | FG100 | | |
| GB10 | BS, NT | SPRUCE+MAPLE | MAPLE 3PLY | EBONY | | | | | | | | | EBONY | GB×2 | 2V, 2T, 3WAY | | | / | GB10 | | |
| JP20 | BS | SPRUCE+MAPLE | MAPLE 3PLY | EBONY | | | | | | | | | EBONY | S58×1 | 1V, 1T | | | / | JP20 | | |
| LR10 | AV | FLAMED MAPLE | M+MAHO+M | JACARANDA | | | | | | | | | SPECIAL | LR SP×2 | 2V, 2T, 3WAY | | | / | LR10 | | |



John Wetton



Neil Carter
(GARY MOORE)



Craig Gruber
(GARY MOORE)



Gerry Laffy
(GIRL)



Joe Puerta
(SHEENA ESTON)



Gary Kemp
(SPANDAU BALLET)



Bob Weir
(GREATFULL DEAD)



Mike Rutherford
(GENESIS)



Alex Blake



Mickey Moody



Dan Dugmore
(RONIN)



Pat Metheny



Jim Cregan
(ROD STEWART)



Steve Miller



Mark Egan



Phil Lynott



Patric Simmons



Mike Porcino
(TOTO)



Victor Bailey



Gary Moore



Phil Collen
(DEF LEPPARD)



Lenny Colton



Sting
(THE POLICE)



Bud Nuñez
(SEAWIND)



Gerry Beckley
(AMERICA)



Greg T. Walker
(BLACKFOOT)



John McVie
(FLEETWOOD MAC)



Michael Franks



Russel Blake



Ronnie Kayfield
(WAYSTED)



Rick Zaniga



Robbie McIntosh
(THE PRETENDERS)

Ibanez

